

THIS DRAWING IS UNPUBLISHED.

RELEASED FOR PUBLICATION

2003

© COPYRIGHT 2003

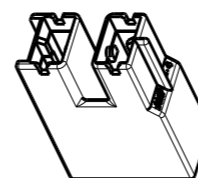
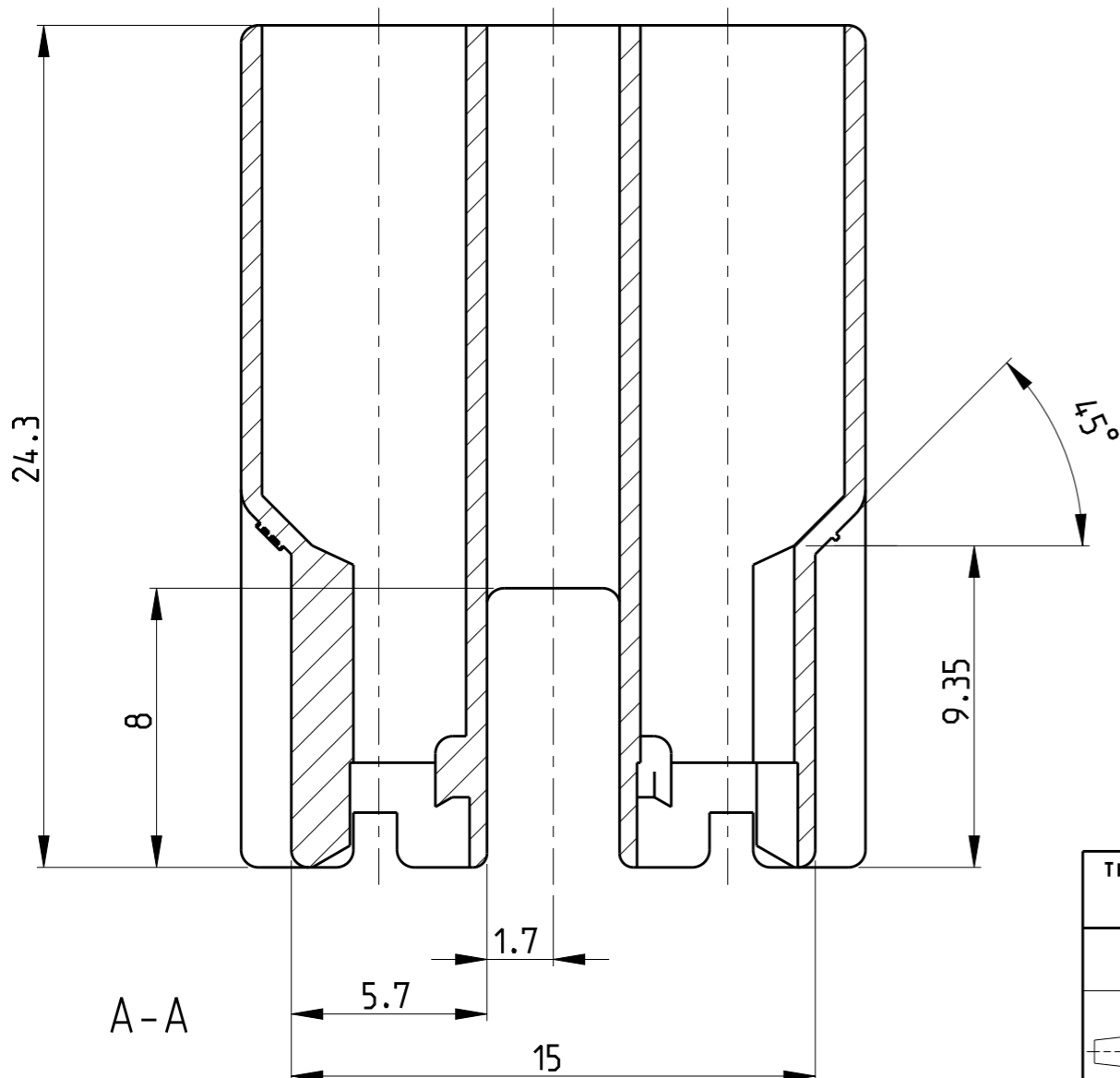
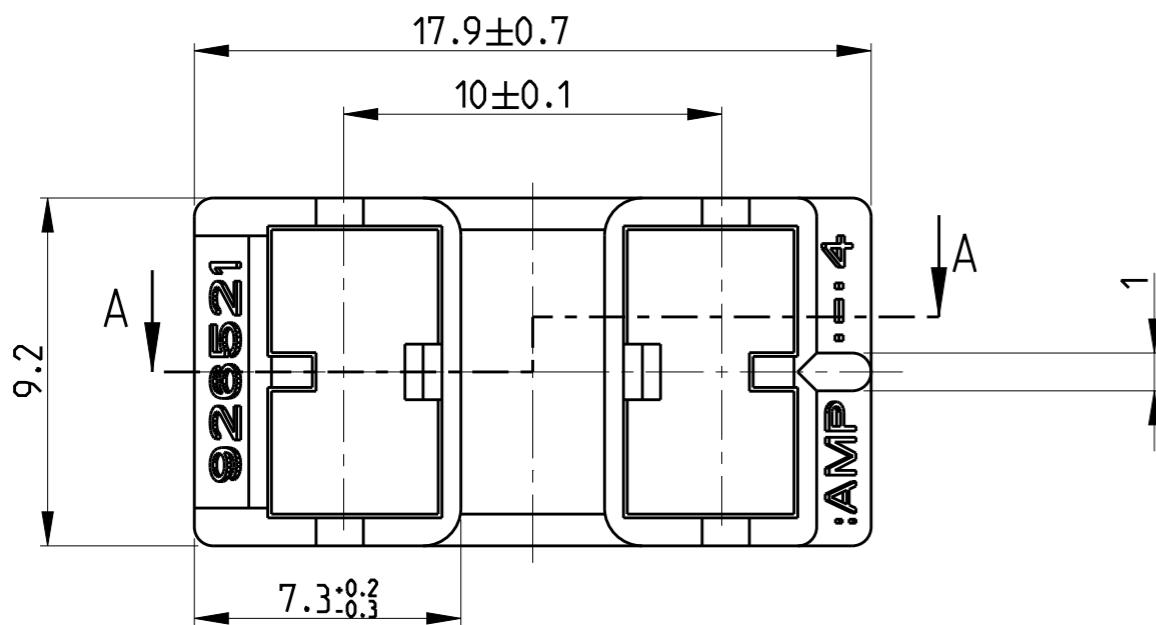
ALL RIGHTS RESERVED.

LOC  
A1

DIST  
-

REVISIONS

P	LTR	DESCRIPTION	DATE	DWN	APVD
L1		1-926521-2 ADDED	08FEB2006	Abr	Goep
L2		ECR-10-026307	16JUN2011	KK	HMR
L3		REVISED PER ECR-20-005366	21APR2020	SS	DL



1:1

OBSOLETE	COLOUR	MATERIAL	PART NUMBER	REV
	BLACK	PA 6.6 (V-0)	<del>1-926521-2</del>	A
	BLACK	PA 6.6 HS-LC	1-926521-1	B
	BROWN RAL 8003	PA 6.6	0-926521-9	L
	WHITE RAL 9001	PA 6.6	0-926521-8	L
	BLUE RAL 5012	PA 6.6	0-926521-7	L
	YELLOW RAL 1018	PA 6.6	0-926521-6	L
	GREY RAL 7037	PA 6.6	0-926521-5	L
	RED RAL 3000	PA 6.6	0-926521-4	L
OBSOLETE	GREEN RAL 6011	PA 6.6	<del>0-926521-3</del>	L
	BLACK	PA 6.6	0-926521-2	L
	NATURAL	PA 6.6	0-926521-1	L
	COLOUR	MATERIAL	PART NUMBER	REV

THIS DRAWING IS A CONTROLLED DOCUMENT.

DWN 21SEP2004  
Abraham.G.  
CHK 22SEP2004  
Göppel.C.  
APVD 23SEP2004  
Bleicher.M.  
PRODUCT SPEC



NAME  
2 pol. Pos.Lock Gehaeuse H-Form  
2 POS: POS.LOCK HOUSING H-TYPE

DIMENSIONS:	TOLERANCES UNLESS OTHERWISE SPECIFIED:
mm	±0.2
	0 PLC ±
	1 PLC ±
	2 PLC ±
	3 PLC ±
	4 PLC ±
	ANGLES ±1°
MATERIAL -	FINISH -

APPLICATION SPEC -  
WEIGHT 1.15 g  
CUSTOMER DRAWING

SIZE	CAGE CODE	DRAWING NO	RESTRICTED TO
A3	00779	C-926521	
SCALE 5:1	SHEET 1 OF 1	REV L3	

## X-ON Electronics

Largest Supplier of Electrical and Electronic Components

*Click to view similar products for [Headers & Wire Housings](#) category:*

*Click to view products by [TE Connectivity](#) manufacturer:*

Other Similar products are found below :

[892-18-020-10-001101](#) [58102-G61-06LF](#) [582553-1](#) [0009485154](#) [009176003701906](#) [0050291907](#) [LY20-4P-DT1-P1E-BR](#) [02.125.8002.8](#)  
[609-3404](#) [61062-3](#) [61082-181009](#) [622-3653LF](#) [63453-116](#) [636-1030](#) [636-1427](#) [636-3427](#) [636-4007](#) [641938-9](#) [641991-4](#) [644827-2](#) [65817-010LF](#) [65817-015LF](#) [65863-015LF](#) [66207-023LF](#) [67095-007LF](#) [67601157](#) [68645-018](#) [68648-049](#) [70.362.1628.0](#) [70-4210](#) [70-4226B](#) [70-4853B](#) [707-5020](#) [707-5028](#) [71.350.2428.0](#) [71918-208LF](#) [71961-016LF](#) [733-134](#) [733-162](#) [754199-000](#) [760-3052](#) [787-8014-00](#) [79531-3000](#)  
[FCN-360C032-B](#) [FCN-367T-T012/H](#) [FCN-723D010/2](#) [80.063.4001.1](#) [800-90-001-10-001000](#) [800-90-010-10-002000](#) [801-43-002-10-013000](#)