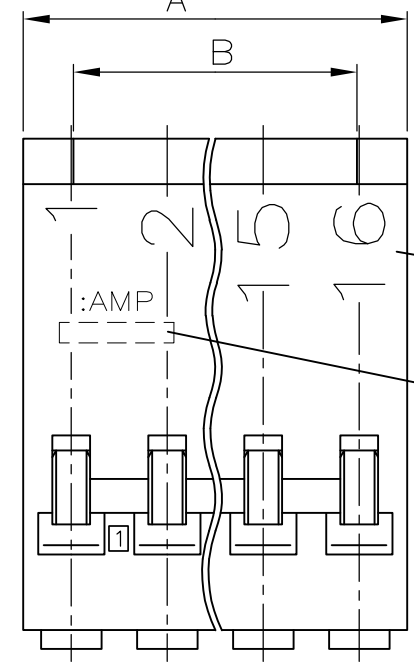
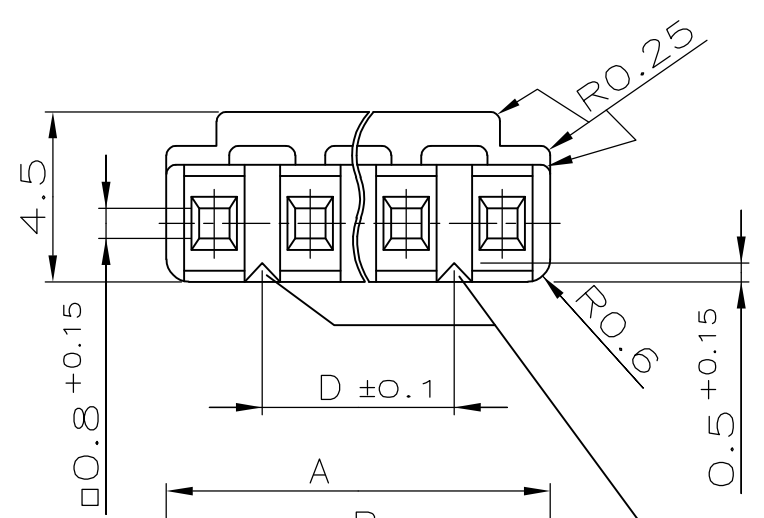
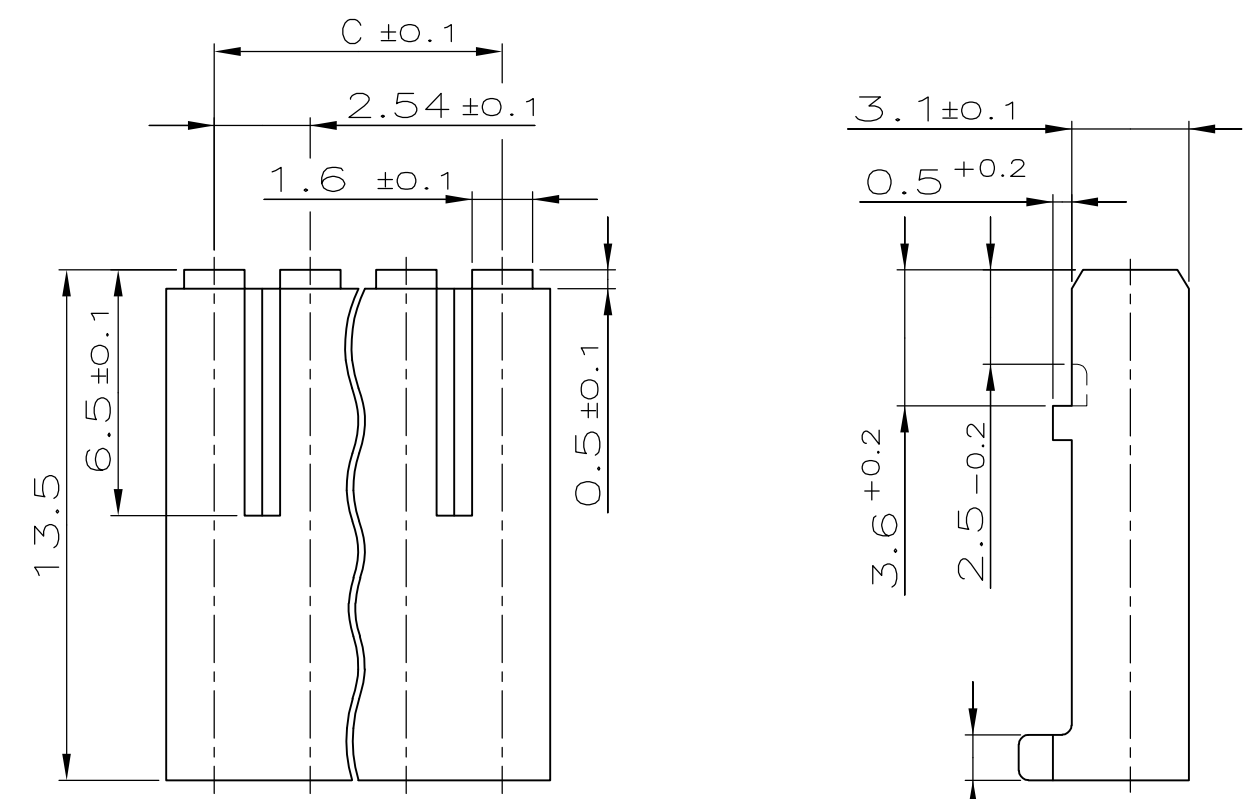


THIS DRAWING IS UNPUBLISHED.  
 VERTRAULICHE UNVERÖFFENTLICHTE ZEICHNUNG  
 © COPYRIGHT - By -  
 RELEASED FOR PUBLICATION  
 FREI FUER VERÖFFENTLICHUNG  
 ALL RIGHTS RESERVED.  
 ALLE RECHTE VORBEHALTEN

| LOC | DIST | REVISIONS<br>ÄNDERUNGEN         |            |       |         |
|-----|------|---------------------------------|------------|-------|---------|
| P   | LTR  | DESCRIPTION<br>BESCHREIBUNG     | DATE       | DWN   | APVD    |
|     | F2   | MASS "A" 12.07 GEÄNDERT IN 12.7 | 07.03.2007 | TILLE | KRAEMER |
|     | F3   | MASS "D" 12.07 GEÄNDERT IN 12.7 | 07.03.2007 | TILLE | KRAEMER |
|     | F4   | ECR-10-026307                   | 18JAN11    | KK    | HMR     |



POLARISATIONSNUT NACH DER ERSTEN  
 UND VOR DER LETZTEN KONTAKTKAMMER

KAMMERKENNZEICHNUNG NACH DIN 30640

AMP-TEILE NUMMER

OBSOLETE  
 OBSOLETE

VERWENDET FUER KONTAKT PN 927 985

|          |          |       |          |         |                              |             |
|----------|----------|-------|----------|---------|------------------------------|-------------|
| 35.56    | 38.10    | 37.5  | 40.64    | 16      | 1-928 205-6                  |             |
| 33.02    | 35.56    | 35.0  | 38.10    | 15      | 1-928 205-5                  |             |
| 30.48    | 33.02    | 32.5  | 35.56    | 14      | 1-928 205-4                  |             |
| 27.94    | 30.48    | 30.0  | 33.02    | 13      | 1-928 205-3                  |             |
| OBSOLETE | 25.40    | 27.94 | 27.5     | 30.48   | 12                           | 1-928 205-2 |
| OBSOLETE | 22.86    | 25.40 | 25.0     | 27.94   | 11                           | 1-928 205-1 |
| OBSOLETE | 20.32    | 22.86 | 22.5     | 25.40   | 10                           | 1-928 205-0 |
|          | 17.78    | 20.32 | 20.0     | 22.86   | 9                            | 928 205-9   |
|          | 15.24    | 17.78 | 17.5     | 20.32   | 8                            | 928 205-8   |
|          | 12.70    | 15.24 | 15.0     | 17.78   | 7                            | 928 205-7   |
|          | 10.16    | 12.70 | 12.5     | 15.24   | 6                            | 928 205-6   |
|          | 7.62     | 10.16 | 10.0     | 12.70   | 5                            | 928 205-5   |
|          | 5.08     | 7.62  | 7.5      | 10.16   | 4                            | 928 205-4   |
|          | 2.54     | 5.08  | 5.0      | 7.62    | 3                            | 928 205-3   |
|          | -        | 2.54  | 2.5      | 5.08    | 2                            | 928 205-2   |
| "D ±0.1" | "C ±0.1" | "B"   | "A -0.2" | POLZAHL | NATUR                        |             |
|          |          |       |          |         | BESTELL-NR.<br>GEHAEUSEFARBE |             |

|                   |               |      |      |          |                |                   |
|-------------------|---------------|------|------|----------|----------------|-------------------|
| -                 | -             | -    | -    | -        | -              | -                 |
| -                 | -             | -    | -    | -        | -              | -                 |
| -                 | SIEHE TABELLE | -    | -    | PBTP GV  | SIEHE TABELLE  | BUCHSENGEHAEUSE 1 |
| CUSTOMER PART NO. | TE PART NO.   | REV. | PCS. | MATERIAL | SURFACE COLOUR | DESCRIPTION       |
|                   |               |      |      |          |                | ITEM NO.          |

THIS DRAWING IS A CONTROLLED DOCUMENT.  
 DIESE ZEICHNUNG IST EIN KONTROLLIERTES DOKUMENT.

DIMENSIONS: DIMENSIONEN: mm

TOLERANCES UNLESS OTHERWISE SPECIFIED: ALLGEMEINE TOLERANZEN

|                 |       |
|-----------------|-------|
| 0 PLC           | ± 0.2 |
| 1 PLC           | ± 0.2 |
| 2 PLC           | ± 0.2 |
| 3 PLC           | ± -   |
| 4 PLC           | ± -   |
| ANGLES / WINKEL | ± -   |

MATERIAL: -

FINISH / OBERFLAECHE / FARBE: -

DWN: 18.8.86  
 ATZMANN  
 CHK: 18.8.86  
 R.KRAEMER  
 APVD: -

NAME: 2-16 POS. AMP-QUICK RECEPTACLE HOUSING  
 2-16 POL. AMP-QUICK BUCHSENGEHAEUSE

APPLICATION SPEC. VERARBEITUNGSSPEZ.: -

WEIGHT GEWICHT: -

SIZE: A3  
 CAGE CODE: 00779  
 DRAWING NO. ZEICHNUNGS-NR.: C-928205

RESTRICTED TO NUR FUER: -

CUSTOMER DRAWING / KUNDENZEICHNUNG

SCALE MASSSTAB: 5:1

SHEET BLATT: 1 OF VON 1

REV: F4

STE TE Connectivity

## X-ON Electronics

Largest Supplier of Electrical and Electronic Components

*Click to view similar products for [Headers & Wire Housings](#) category:*

*Click to view products by [TE Connectivity](#) manufacturer:*

Other Similar products are found below :

[892-18-020-10-001101](#) [58102-G61-06LF](#) [582553-1](#) [0009485154](#) [009176003701906](#) [0050291907](#) [LY20-4P-DT1-P1E-BR](#) [02.125.8002.8](#)  
[609-3404](#) [61062-3](#) [61082-181009](#) [622-3653LF](#) [63453-116](#) [636-1030](#) [636-1427](#) [636-3427](#) [636-4007](#) [641938-9](#) [641991-4](#) [644827-2](#) [65817-010LF](#) [65817-015LF](#) [65863-015LF](#) [66207-023LF](#) [67095-007LF](#) [67601157](#) [68645-018](#) [68648-049](#) [70.362.1628.0](#) [70-4210](#) [70-4226B](#) [70-4853B](#) [707-5020](#) [707-5028](#) [71.350.2428.0](#) [71918-208LF](#) [71961-016LF](#) [733-134](#) [733-162](#) [754199-000](#) [760-3052](#) [787-8014-00](#) [79531-3000](#)  
[FCN-360C032-B](#) [FCN-367T-T012/H](#) [FCN-723D010/2](#) [80.063.4001.1](#) [800-90-001-10-001000](#) [800-90-010-10-002000](#) [801-43-002-10-013000](#)