

4

3

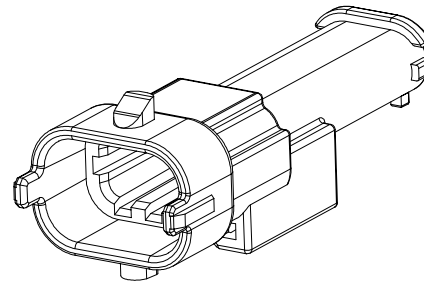
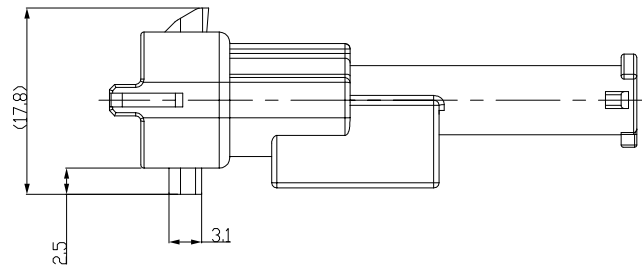
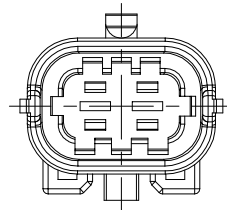
2

1

THIS DRAWING IS UNPUBLISHED. RELEASED FOR PUBLICATION  
COPYRIGHT copyright\_da3e - ALL RIGHTS RESERVED.

| REVISIONS |     |                            |           |     |      |
|-----------|-----|----------------------------|-----------|-----|------|
| P         | LTR | DESCRIPTION                | DATE      | DWN | APVD |
|           |     | RELEASED ECN(FC00-0150-03) | 23.OCT.03 | JW  | CS   |
|           | 01  | REVISED (ECR-05-015312)    | 10.NOV.05 | IS  | JK   |
|           | A   | REVISED (ECR-10-010619)    | 18.MAY.10 | YM  | HG   |
|           | B   | REVISED (ECR-12-011891)    | 14.NOV.12 | SJ  | HG   |
|           | B1  | REVISED (ECR-15-014757)    | 02.DEC.15 | JM  | HG   |

ⓑ CAP HOUSING TYPE B  
P/N: 1-936462-2

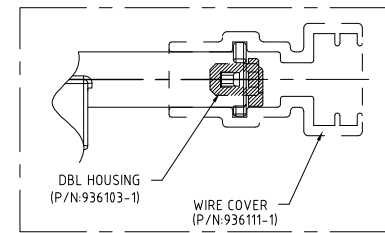
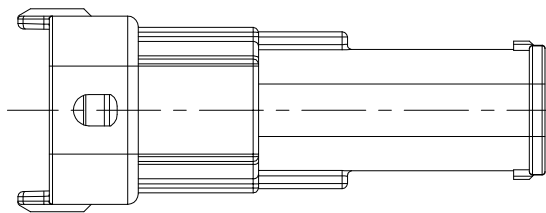
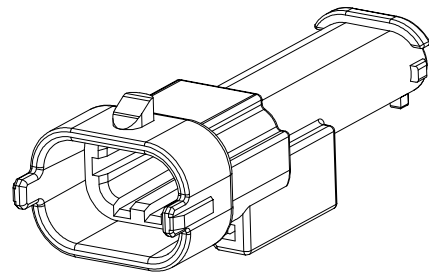


ⓑ (TABLE II)

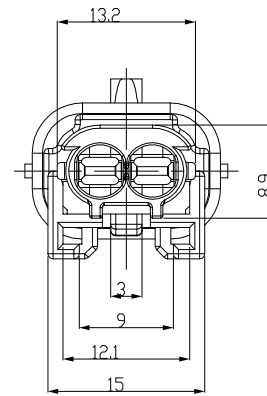
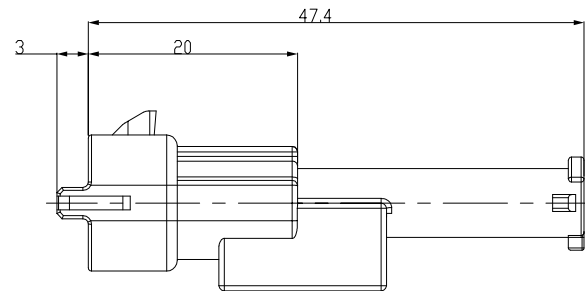
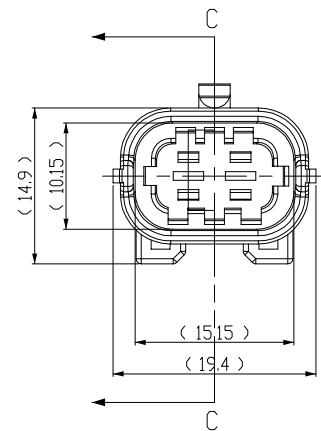
| CODE I : 0-936462-2 | CODE II : 0-936462-1 | CODE III : TBD | CODE IV : TBD |
|---------------------|----------------------|----------------|---------------|
|                     |                      |                |               |
| CODE I : 1-936462-2 | CODE II : TBD        | CODE III : TBD | CODE IV : TBD |
|                     |                      |                |               |

D

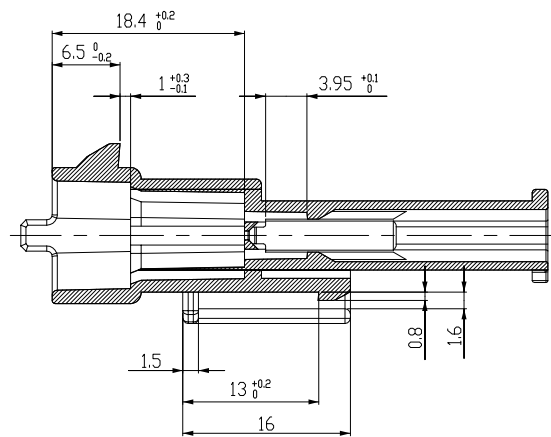
C



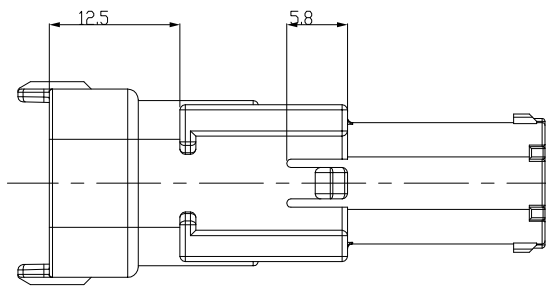
B



A



SECTION C-C



NOTE.

1. APPLIED WITH TAB P/N :

| PART No.                    | 1-962915-1(Tin),-3(Gold) | 1-962916-1(Tin),-3(Gold) |
|-----------------------------|--------------------------|--------------------------|
| WIRE SIZE(mm <sup>2</sup> ) | 0.5~1.0                  | 1.0~2.5                  |

2. APPLIED WITH WIRE SEAL P/N :

| PART No.          | 828904    | 828905    |
|-------------------|-----------|-----------|
| INSULATION DIA(φ) | 1.2~2.1mm | 2.2~3.0mm |

3. BE MATED WITH PLUG HSG (P/N : 936059, 2005388) SMOOTHLY.

| ⓑ 1-936462-2 | CAP HOUSING | PA66 GF15 | BLACK |
|--------------|-------------|-----------|-------|
| 0-936462-2   | CAP HOUSING | PA66 GF15 | BLACK |
| 0-936462-1   | CAP HOUSING | PA66 GF15 | WHITE |
| PART No.     | DESCRIPTION | MATERIAL  | COLOR |

| THIS DRAWING IS A CONTROLLED DOCUMENT. |  | DWN<br>CHK<br>APVD<br>PRODUCT SPEC     |  | TE Connectivity                                |  |
|--|--|--|--|--|--|
| DIMENSIONS: mm                         |  | TOLERANCES UNLESS OTHERWISE SPECIFIED: |  | NAME   |  |
| 0 <XX<10 ± 0.2                         |  | 10 <XX<30 ± 0.25                       |  | 2.8MM SEALED 2P CAP HSG (FLAT SENSOR)          |  |
| 30 <XX ± 0.3                           |  | ANGLES ± 3°                            |  | SIZE CAGE CODE DRAWING NO RESTRICTED TO        |  |
| MATERIAL                               |  | FINISH                                 |  | A2 00779 C=936462                              |  |
| SEE TABLE                              |  | SEE TABLE                              |  | CUSTOMER DRAWING SCALE 2:1 SHEET 1 OF 1 REV B1 |  |

## X-ON Electronics

Largest Supplier of Electrical and Electronic Components

*Click to view similar products for [Automotive Connectors](#) category:*

*Click to view products by [TE Connectivity](#) manufacturer:*

Other Similar products are found below :

[003-018-000](#) [600858](#) [60403001](#) [60993906-B](#) [60993913-B](#) [629515004020001](#) [M902-2131](#) [M902-2161](#) [M902-2344](#) [72.330.1035.1](#)  
[73.353.4028.0](#) [F118010](#) [F119300-B](#) [F132210](#) [F132210-B](#) [F166900](#) [F180100](#) [F258300](#) [F258300-B](#) [F294300-B](#) [F339100](#) [F339700](#) [F358300-](#)  
[B](#) [F374110](#) [F407400](#) [F412210](#) [F427600](#) [F444110](#) [F487000](#) [F495100-B](#) [F500900-B](#) [F509500B-B](#) [770444-1](#) [776880-1](#) [827153-1](#) [881735-1](#)  
[8N1515-32-24P](#) [9-1326727-8](#) [9-1326729-8](#) [925467-1](#) [925474-1](#) [928905-1](#) [936398-2](#) [964562-1](#) [964562-4](#) [964731-2](#) [965051-1](#) [968782-1](#)  
[GT17SA-8DS-HU](#) [GT17VS-10DP-5.2CF](#)