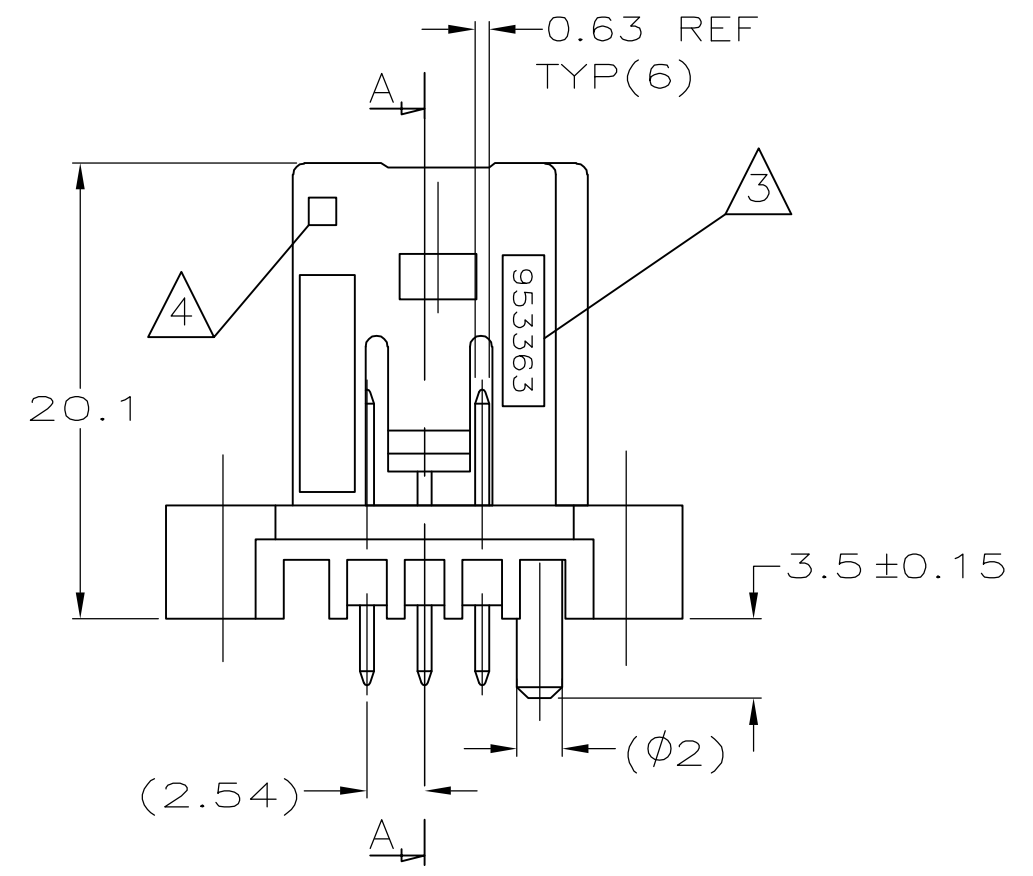
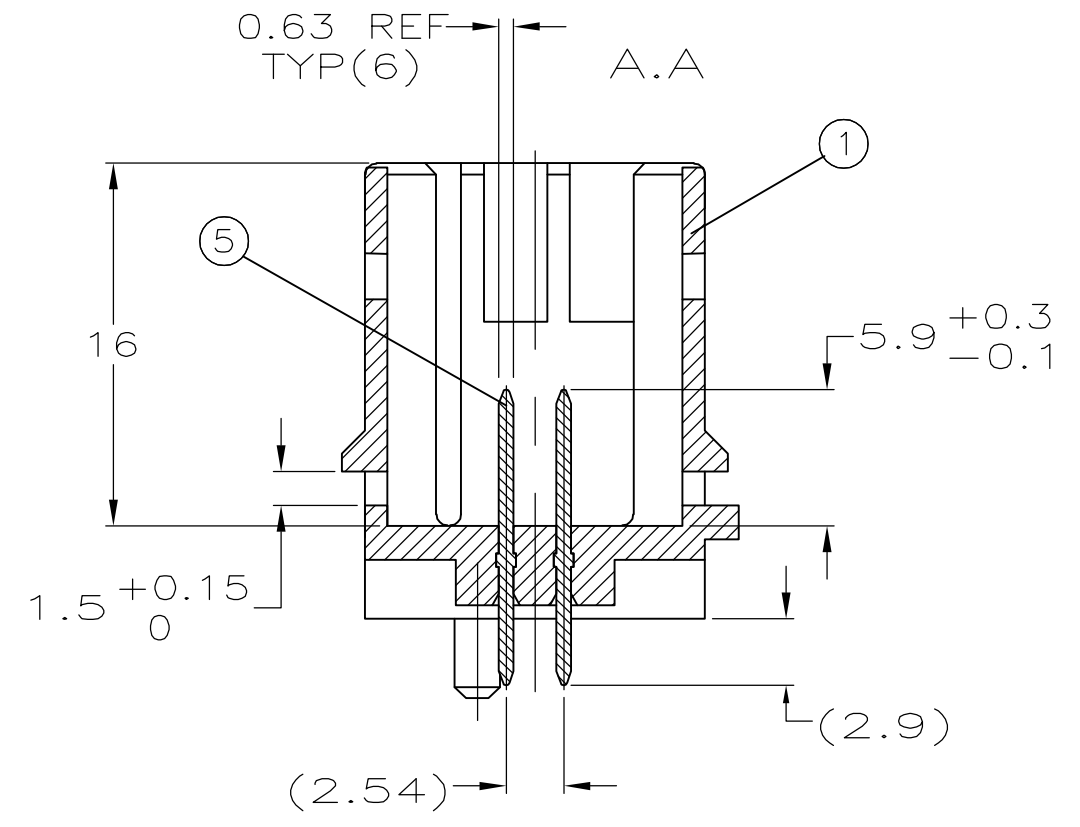
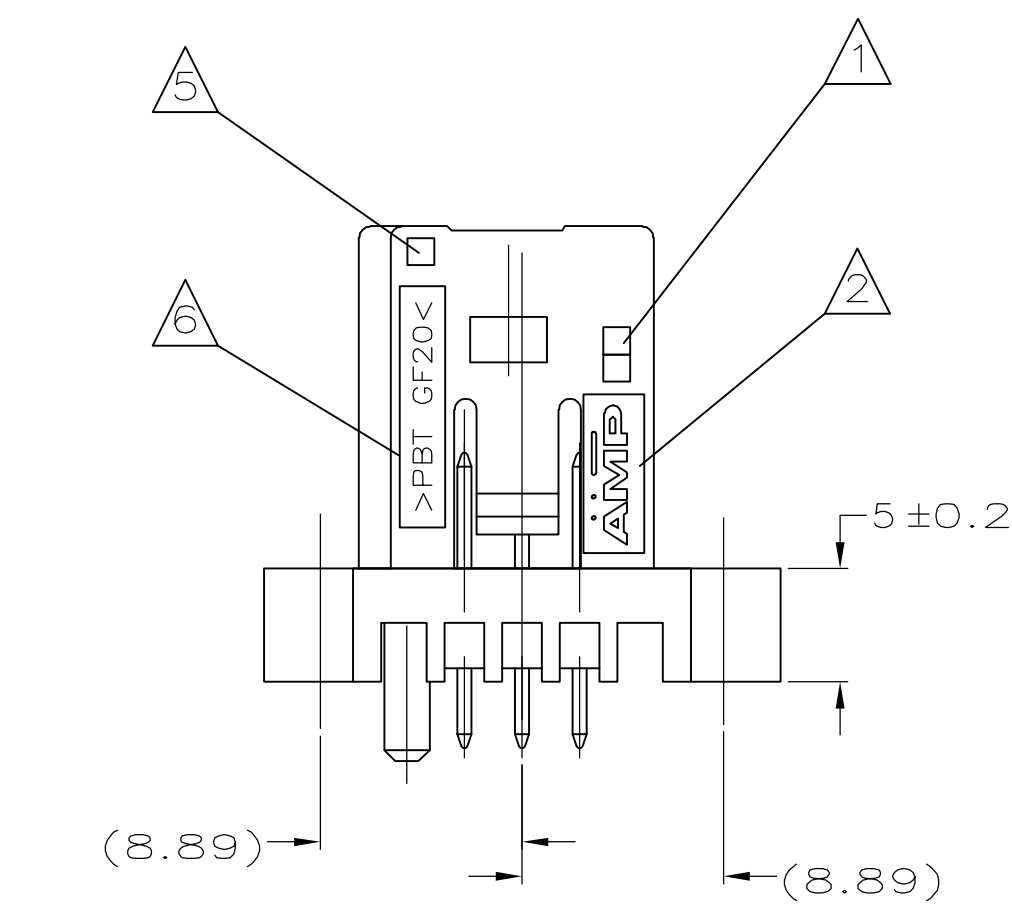
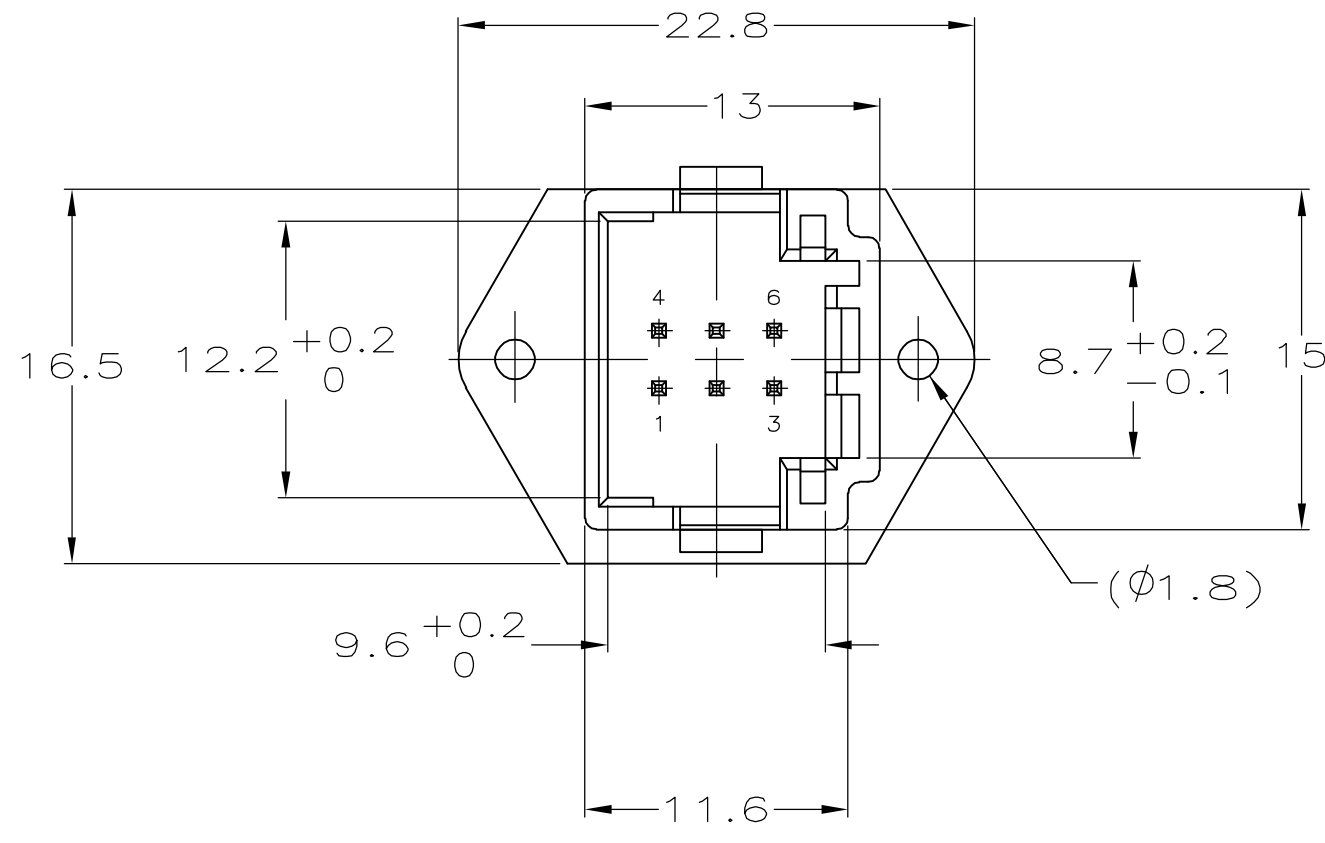
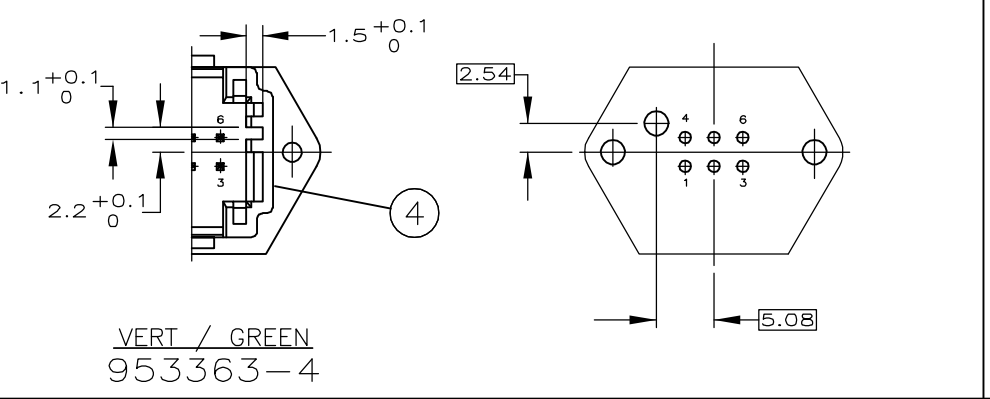
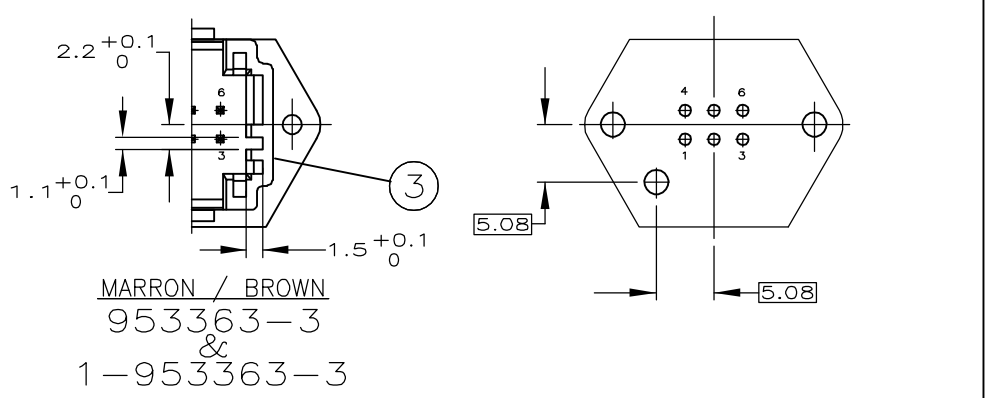
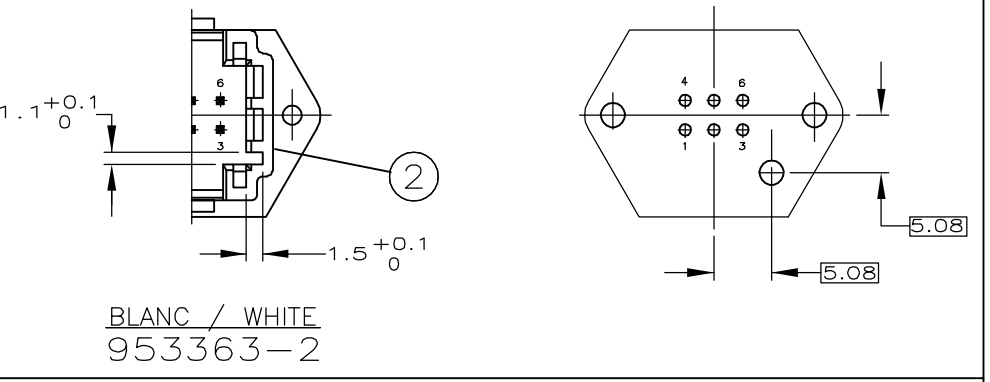
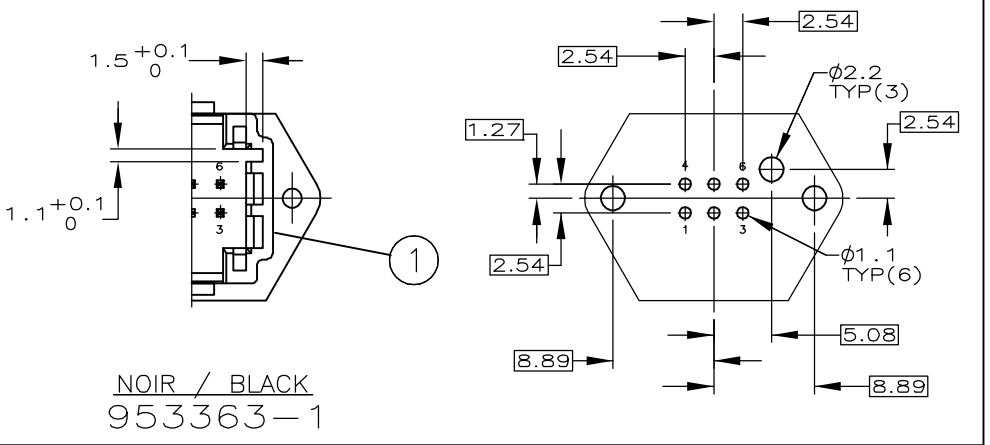


THIS DRAWING IS UNPUBLISHED.
 DIFFUSION RESTREINTE AMP
 © COPYRIGHT BY TYCO ELECTRONICS CORPORATION.
 ALL RIGHTS RESERVED.
 TOUS DROITS RESERVES.

LOC	DIST	REVISIONS			
P	LTR	DESCRIPTION	DATE	DWN	APVD
F	7	MODIFICATION INTERFACE PC	27-MAI-98	JLQ	-
		SUPPRESSION /-2 AND /-4	11-SEP-98	JLQ	-
		CONTACTS COTE CI A 2.9	16-DEC-98	JLQ	-
		CODING PIN ON PCB FOR -3	10-JAN-01	JLQ	-
		ADD NEWS PNS: 953363-2/-4	29-AUG-06	NT.N	J.L
		ADD NEW PN 1-953363-3	22-NOV-06	NT.N	J.L



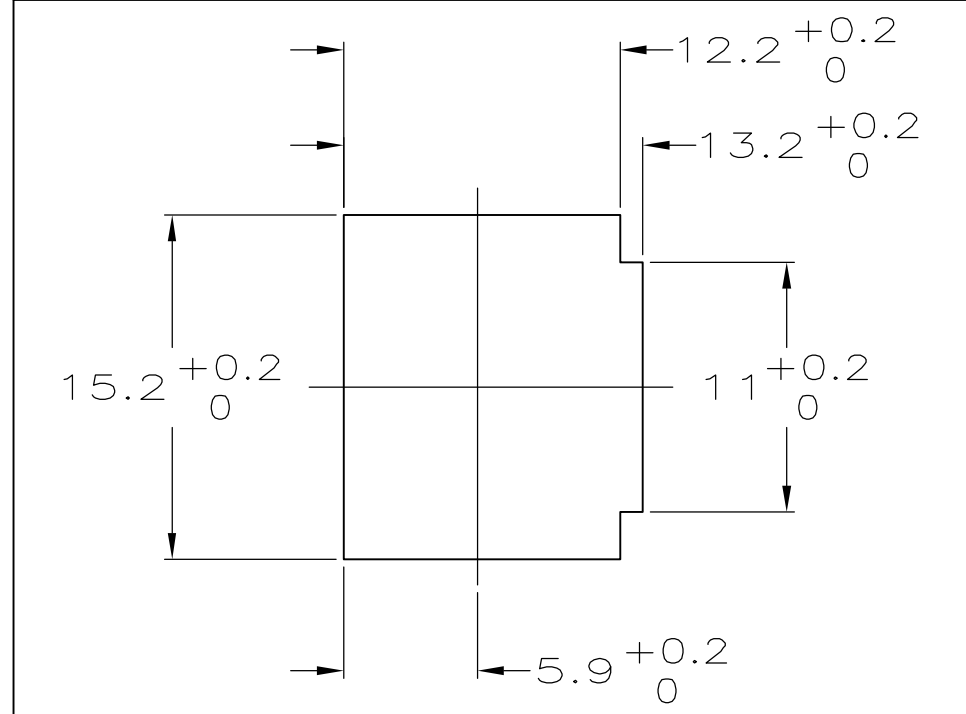
DETROMPAGES / CODINGS
 IMPLANTATION CI / PCB DETAILS
 VUE DE DESSUS / VIEW FROM TOP



- NOTES:
- ① DATE CODE
 - ② LOGO D'AMP
 - ③ REFERENCE DU PRODUIT ASSEMBLE
 - ④ N° D'EMPREINTE DU MOULE
 - ⑤ REVISION DU MOULE
 - ⑥ MATIERE

- NOTES:
- ① DATE CODE
 - ② AMP LOGO
 - ③ ASSY PART NUMBER
 - ④ CAVITY MARKING
 - ⑤ REVISION STATUS
 - ⑥ MATERIAL REFERENCE

DECOUPE PANNEAU / PANEL CUTOUT



ASSY. PN	REV	MATERIAL	DESIGNATION / NAME	COULEUR / COLOR FINITION	REP.
953363-1	-	CuSn6	MQS CONTACT	DORURE SELECTIVE 0.4µm mini Au sur 1µm mini Ni SELECTIVE GOLD PLATING 0.4µm mini Au over 1µm mini Ni	⑤
953363-2	-	PBT GF20	BOITIER / HOUSING	POST ETAME / POST TIN	④
953363-3	-	PBT GF20	BOITIER / HOUSING	GREEN / VERT	③
953363-4	-	PBT GF20	BOITIER / HOUSING	MARRON / BROWN	②
1-953363-3	-	PBT GF20	BOITIER / HOUSING	WHITE / BLANC	①
1-953363-3	6	PBT GF20	BOITIER / HOUSING	NOIR / BLACK	①
QTY		MATERIAL	DESIGNATION / NAME	COULEUR / COLOR FINITION	REP.

THIS DRAWING IS A CONTROLLED DOCUMENT.
 CE SCHEMA EST UN DOCUMENT CONTROLÉ

TOLERANCES UNLESS OTHERWISE SPECIFIED:
 TOLERANCES NON SPECIFIEES (SUIV NB DE DECIMALES):
 ANGLES 45°

FINISH FINITION

APPROVED: J.J. REVIL
 DATE: 28-JAN-99

WEIGHT MASSE APPROX. 2 g

CUSTOMER DRAWING/PLAN CLIENT

tyco Electronics
 Tyco Electronics Corporation
 Pontoise, 95300 FRANCE

NAME TITRE: EMBASE 6V MQS DROITE AVEC OREILLES
 6W MQS STRAIGHT HEADER WITH EARS

SIZE FORMAT: A2
 CAGE CODE: 00779
 DRAWING NO: C=953363

RESTRICTED TO: -

SCALE ECHELLE: 5:1
 SHEET FEUILLE: 1 DE 1
 REV: F

953363

X-ON Electronics

Largest Supplier of Electrical and Electronic Components

Click to view similar products for [Automotive Connectors](#) category:

Click to view products by [TE Connectivity](#) manufacturer:

Other Similar products are found below :

[003-018-000](#) [60403001](#) [60993906-B](#) [M902-2131](#) [M902-2161](#) [72.330.1035.1](#) [73.353.4028.0](#) [F119300-B](#) [F166900](#) [F258300-B](#) [F358300-B](#)
[F407400](#) [F444110](#) [F487000](#) [F509500B-B](#) [827153-1](#) [8N1515-32-24P](#) [9-1326729-8](#) [925474-1](#) [928905-1](#) [964562-4](#) [968782-1](#) [GT17SA-8DS-](#)
[HU](#) [98891-1012](#) [98947-1016](#) [12004147](#) [12004475-L](#) [12010290](#) [12010309-B](#) [12015454](#) [12020219-B](#) [12020308](#) [12041318-B](#) [12052225-L](#)
[12052466](#) [12059125](#) [12064869](#) [12004327-B](#) [12010503-B](#) [12015308](#) [12015384](#) [12015909](#) [1-21030-1](#) [12041254](#) [12041318](#) [12047946-B](#)
[12047957](#) [12047957-L](#) [12059473](#) [12066261](#)