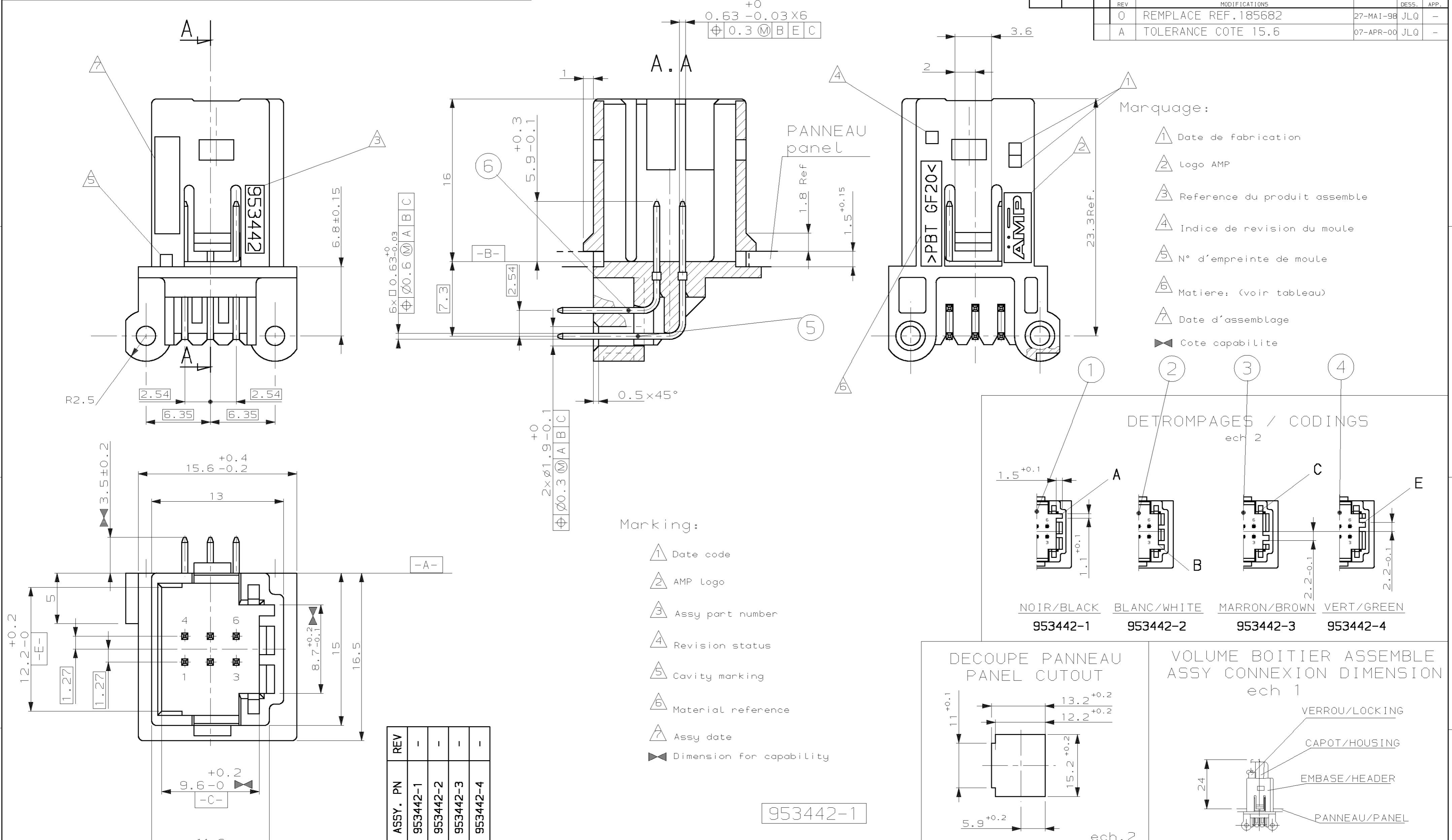


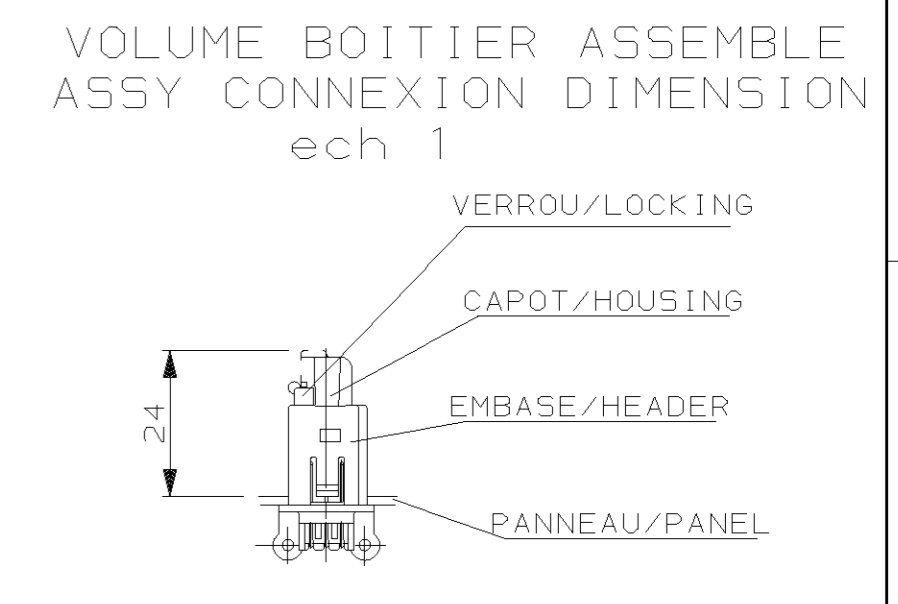
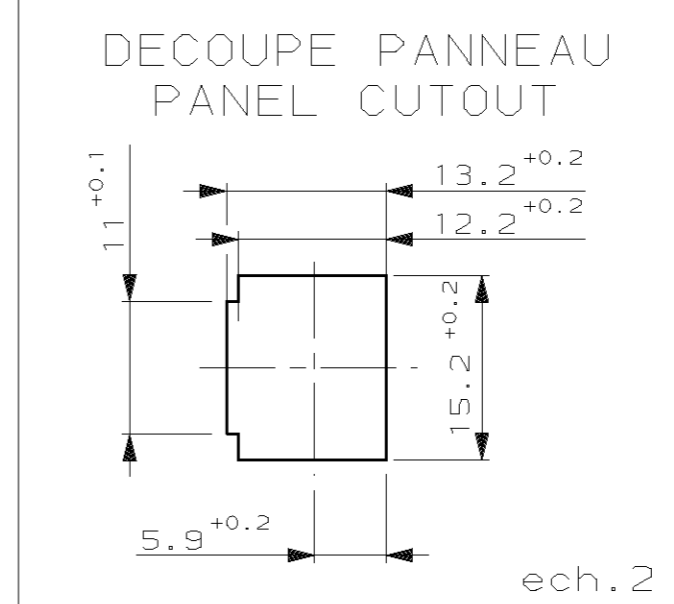
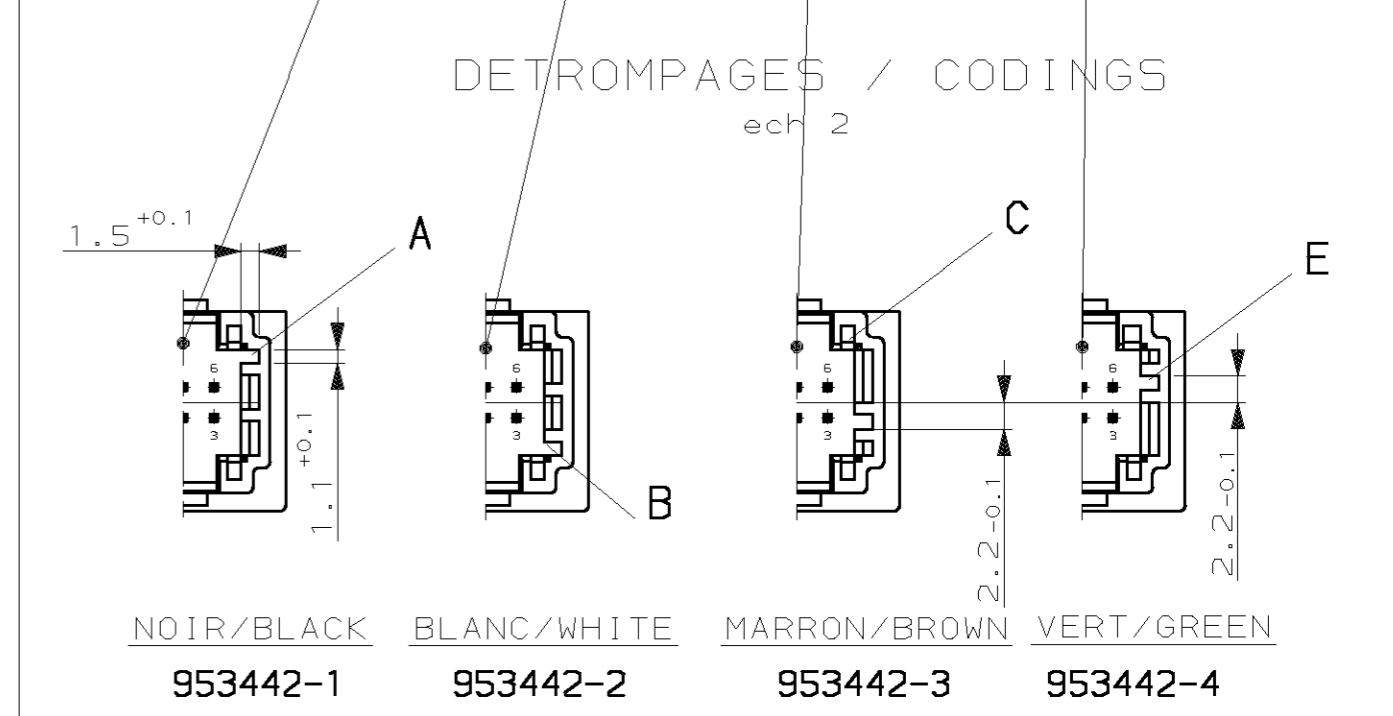
THIS DRAWING IS UNPUBLISHED. RELEASED FOR PUBLICATION
 DIFFUSION RESTREINTE AMP. DIFFUSION PUBLIQUE .19
 ALL RIGHTS RESERVED. TOUS DROITS RESERVES.

REVOLUTIONS		DATE	DWN DESS.	APVD APP.
P	LTR REV	DESCRIPTION MODIFICATIONS		
	0	REPLACE REF.185682	27-MAI-98	JLQ -
	A	TOLERANCE COTE 15.6	07-APR-00	JLQ -



- Marquage:
- 1 Date de fabrication
 - 2 Logo AMP
 - 3 Reference du produit assemble
 - 4 Indice de revision du moule
 - 5 N° d'empreinte de moule
 - 6 Matiere: (voir tableau)
 - 7 Date d'assemblage
 - ▬ Cote capabilite

- Marking:
- 1 Date code
 - 2 AMP Logo
 - 3 Assy part number
 - 4 Revision status
 - 5 Cavity marking
 - 6 Material reference
 - 7 Assy date
 - ▬ Dimension for capability



ASSY. PN	REV	MAT.	DESIGNATION / NAME	COULEUR / COLOR	REP.
953442-1	-	CuSn6	MQS SHORT CONTACT	POST ETAME / POST TIN	6
953442-2	-	CuSn6	MQS LONG CONTACT	POST ETAME / POST TIN	5
953442-3	-	PBT GF20	BOITIER / HOUSING	VERT / GREEN	4
953442-4	-	PBT GF20	BOITIER / HOUSING	MARRON / BROWN	3
		PBT GF20	BOITIER / HOUSING	BLANC / WHITE	2
		PBT GF20	BOITIER / HOUSING	NOIR / BLACK	1
QTY		MATERIAL	DESIGNATION / NAME	COULEUR / COLOR	REP.

THIS DRAWING IS A CONTROLLED DOCUMENT FOR AMP INCORPORATED. IT IS SUBJECT TO CHANGE AND THE CONTROLLING ENGINEERING ORGANIZATION SHOULD BE CONTACTED FOR THE LATEST REVISION. CE PLAN EST UN DOCUMENT CONTROLÉ PAR AMP INCORPORATED. IL EST SUSCEPTIBLE D'ÊTRE RÉVISÉ. CONTACTER LE SERVICE TECHNIQUE D'AMP SE FRANCE POUR OBTENIR LA DERNIÈRE RÉVISION.		DWN/DESIGNE J. LAQUERBE 27-MAY-98 CHR/VERIFIE J. LAQUERBE 18-APR-00 APVD/APPROUVE J.J. REVIL 18-APR-00	AMP DE FRANCE 95301 PONTOISE
DIMENSIONS: mm TOLERANCES UNLESS OTHERWISE SPECIFIED, TOLERANCES NON SPECIFIEES (SUIV NB DE DECIMALES): DIMENSIONS: ±0.3 ANGLES ±5°	MATERIAL MATIERE FINISH FINITION	PRODUCT SPEC SPEC. PRODUIT 108-15150 APPLICATION SPEC SPEC. APPLICATION	NAME TITRE EMBASE 6V MQS COUDEE AVEC OREILLES 6W MQS RIGHT ANGLE HEADER WITH EARS
WEIGHT MASSE APPROX. 2.5gr	SIZE FORMAT A2	CAGE CODE 00779	DRAWING NO TITRE 953442
CUSTOMER DRAWING/PLAN CLIENT UNIFORMEMENT POUR REFERENCE		SCALE ECHELLE 4:1	SHEET FEUILLE 1 DE 1

X-ON Electronics

Largest Supplier of Electrical and Electronic Components

Click to view similar products for [Automotive Connectors](#) category:

Click to view products by [TE Connectivity](#) manufacturer:

Other Similar products are found below :

[003-018-000](#) [600858](#) [60403001](#) [60993906-B](#) [60993913-B](#) [629515004020001](#) [M902-2131](#) [M902-2161](#) [M902-2344](#) [72.330.1035.1](#)
[73.353.4028.0](#) [F118010](#) [F119300-B](#) [F132210](#) [F132210-B](#) [F166900](#) [F180100](#) [F258300](#) [F258300-B](#) [F294300-B](#) [F339100](#) [F339700](#) [F358300-](#)
[B](#) [F374110](#) [F407400](#) [F412210](#) [F427600](#) [F444110](#) [F487000](#) [F495100-B](#) [F500900-B](#) [F509500B-B](#) [770444-1](#) [776880-1](#) [827153-1](#) [881735-1](#)
[8N1515-32-24P](#) [9-1326727-8](#) [9-1326729-8](#) [925467-1](#) [925474-1](#) [928905-1](#) [936398-2](#) [964562-1](#) [964562-4](#) [964731-2](#) [965051-1](#) [968782-1](#)
[GT17SA-8DS-HU](#) [GT17VS-10DP-5.2CF](#)