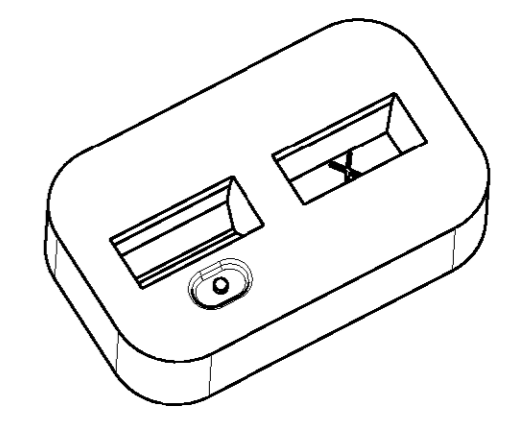
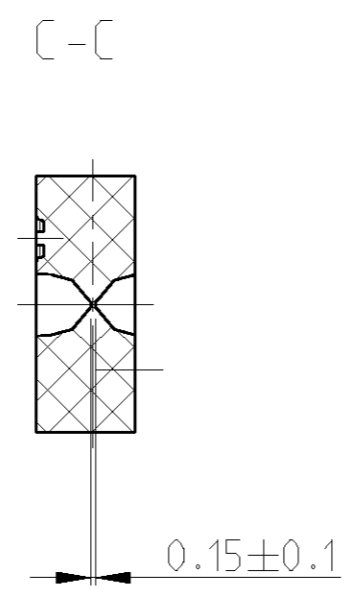
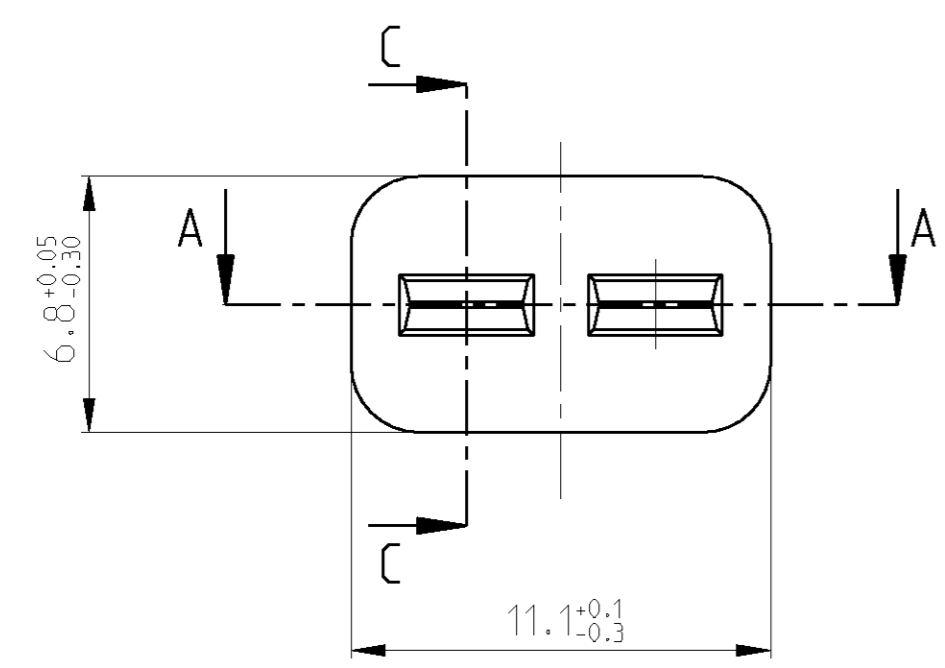
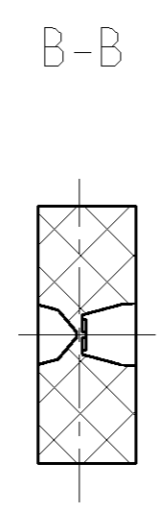
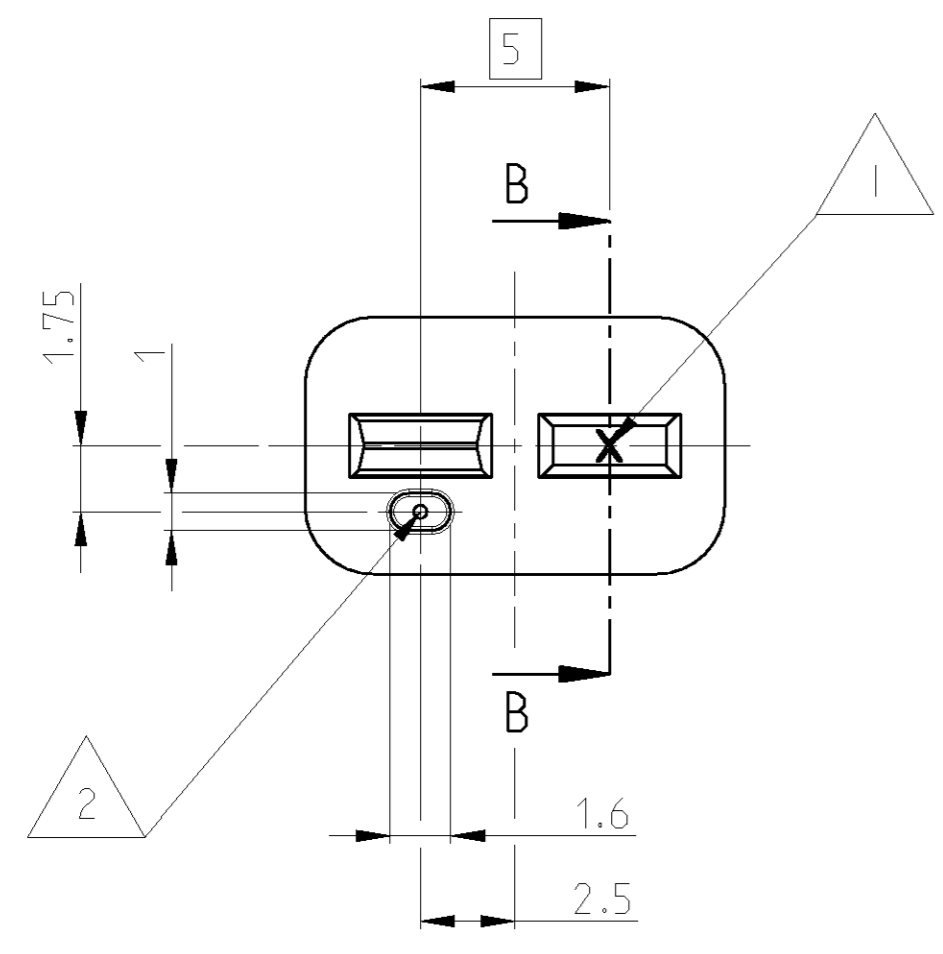
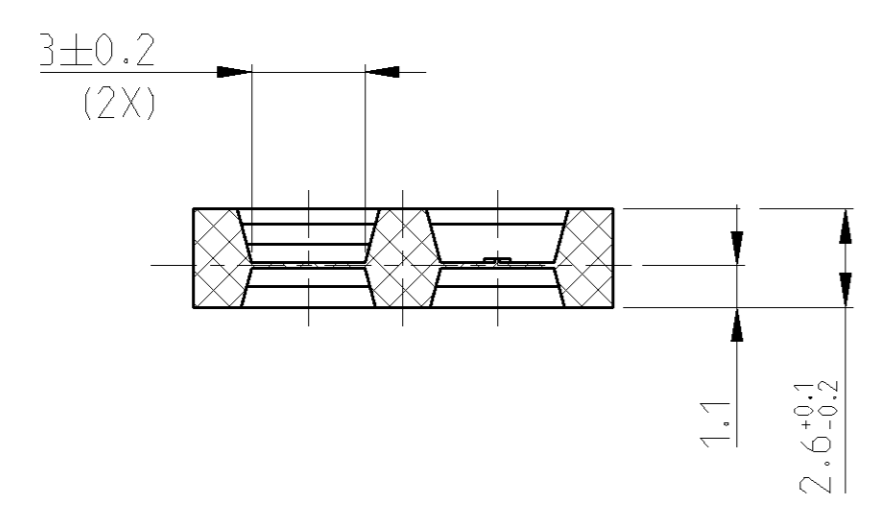


THIS DRAWING IS UNPUBLISHED. RELEASED FOR PUBLICATION 2006
 © COPYRIGHT 2006 BY TYCO ELECTRONICS CORPORATION. ALL RIGHTS RESERVED.

LOC	DIST	REVISIONS			
P	LTR	DESCRIPTION	DATE	DWN	APVD
D		SEE E-06-017312	04JUL2006	LN	TK
D1		SEE E-06-022754	25SEP2006	LN	VB



SECTION A-A
Schnitt



NOTES
Bemerkungen

- 1 CAVITY MARKING RAISED, OPTIONAL
IN ONE OF THE WINDOWS
Nestmarkierung erhaben, wahlweise
in einem der Fenster
- 2 GATE AREA SUNK
GATEMARK MUST NOT GET THROUGH OUTER GEOMETRY
Angussbereich vertieft
Anguss darf nicht aus der aeusseren
Geometrie ueberstehen

963209-1	D	SEALING	NATURE	0.18	1
PART NO	REV	DESCRIPTION	COLOUR	WEIGHT [g]	ITEM

THIS DRAWING IS A CONTROLLED DOCUMENT FOR TYCO ELECTRONICS CORPORATION IT IS SUBJECT TO CHANGE AND THE CONTROLLING ENGINEERING ORGANIZATION SHOULD BE CONTACTED FOR THE LATEST REVISION.		DWN L. Nguyen 04 JUL 2006	tyco Electronics AMP GmbH 64625 Bensheim (Germany)		
DIMENSIONS: mm		CHK T. Kilian 18 JUL 2006			
TOLERANCES UNLESS OTHERWISE SPECIFIED:		APVD D. Duenkel 18 JUL 2006	NAME SEALING FOR 2POS. JPT HOUSING Dichtung fuer 2pol. Gehaeuse		
0 PLC ±0.3		PRODUCT SPEC 108-18102	SIZE A2		
1 PLC ±0.3		APPLICATION SPEC 114-18175	CAGE CODE 00779	DRAWING NO G=963209	RESTRICTED TO -
2 PLC ±0.3		WEIGHT -	SCALE 5:1		
3 PLC ±		CUSTOMER DRAWING	SHEET 1 OF 1		
4 PLC ±			REV 01		
ANGLES ±°					
FINISH					
MATERIAL Silicone					

X-ON Electronics

Largest Supplier of Electrical and Electronic Components

Click to view similar products for [Automotive Connectors](#) category:

Click to view products by [TE Connectivity](#) manufacturer:

Other Similar products are found below :

[003-018-000](#) [600858](#) [60403001](#) [60993906-B](#) [60993913-B](#) [629515004020001](#) [M902-2131](#) [M902-2161](#) [M902-2344](#) [72.330.1035.1](#)
[73.353.4028.0](#) [F118010](#) [F119300-B](#) [F132210](#) [F132210-B](#) [F166900](#) [F180100](#) [F258300](#) [F258300-B](#) [F294300-B](#) [F339100](#) [F339700](#) [F358300-](#)
[B](#) [F374110](#) [F407400](#) [F412210](#) [F427600](#) [F444110](#) [F487000](#) [F495100-B](#) [F500900-B](#) [F509500B-B](#) [770444-1](#) [776880-1](#) [827153-1](#) [881735-1](#)
[8N1515-32-24P](#) [9-1326727-8](#) [9-1326729-8](#) [925467-1](#) [925474-1](#) [928905-1](#) [936398-2](#) [964562-1](#) [964562-4](#) [964731-2](#) [965051-1](#) [968782-1](#)
[GT17SA-8DS-HU](#) [GT17VS-10DP-5.2CF](#)