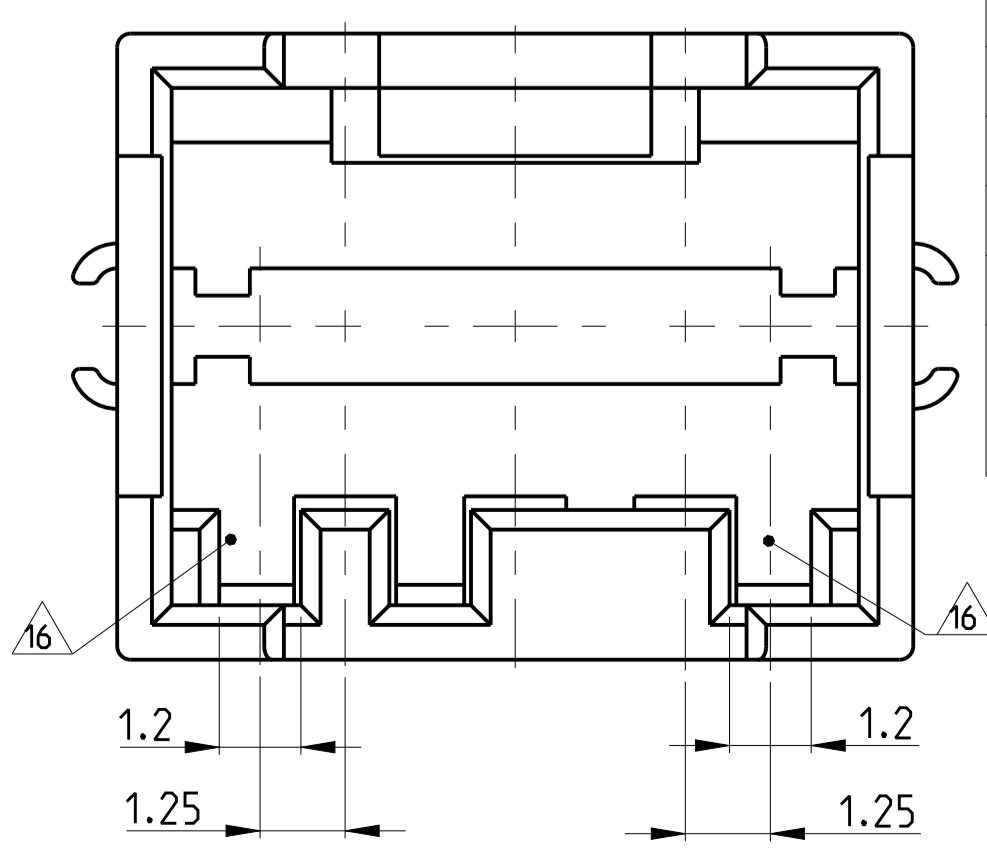


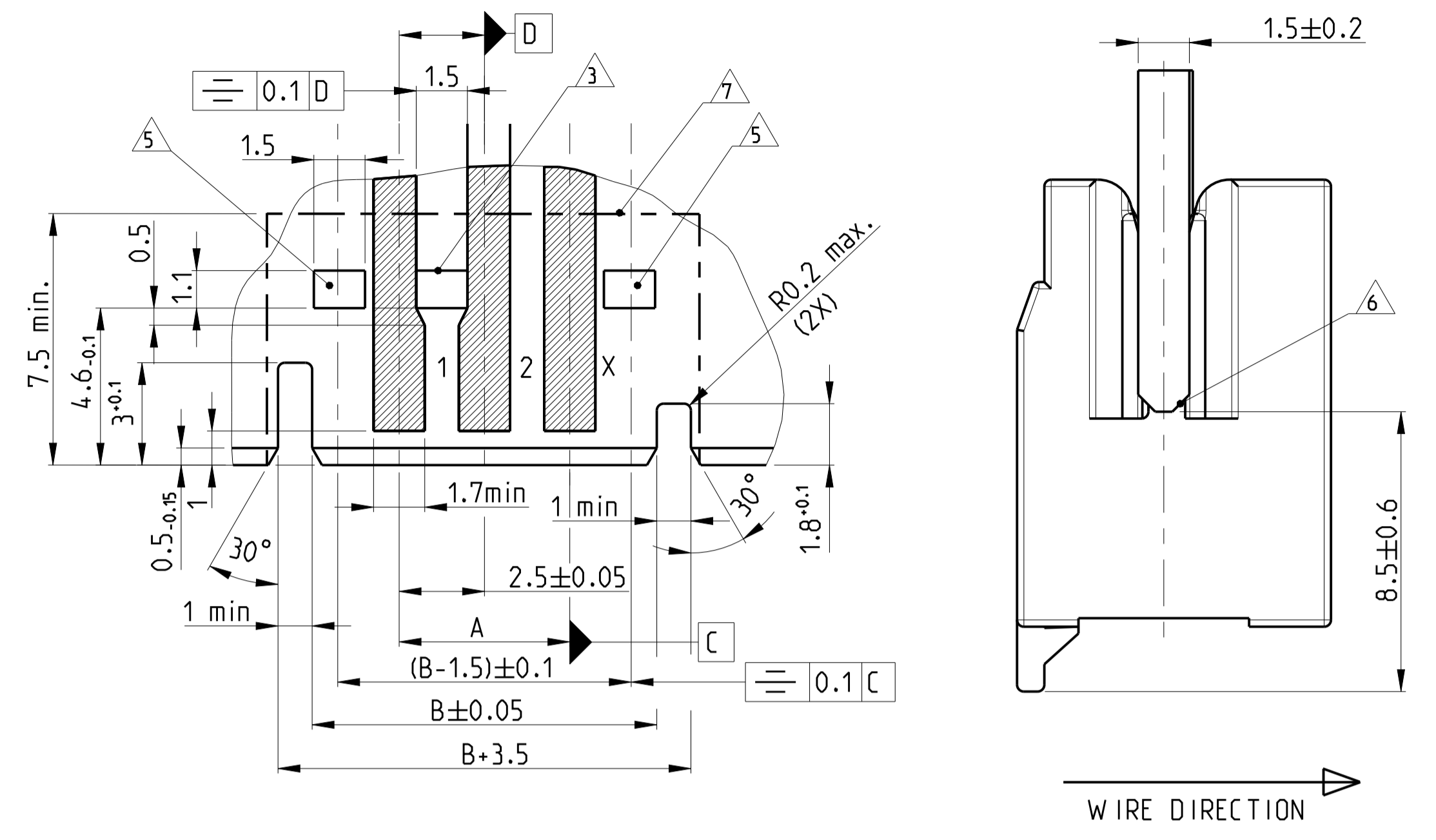
SECTION A-A

- 1 KODIERUNG ZW ISCHEN KAMMER 1 UND 2 DARGESTELLT (AUF ANFRAGE)
KEYING SHOWN BETWEEN CAVITY 1 AND 2 (ON REQUEST)
- 2 RASTHAKEN BEI ERSTER UND LETZTER KAMMER IMMER VORHANDEN
LOCKING CLIP ALWAYS ON FIRST AND LAST CAVITY
- 3 ZUSATZLICHE RASTHAKEN ZW ISCHEN KAMMER-NR.SIEHE BLATT 2 VON 2
ADDITIONAL LOCKING CLIP BETWEEN CAVITY NO SEE SHEET 2 OF 2
- 4 KAMMERNUMMER
CAVITY NO
- 5 RASTFENSTER IMMER VORHANDEN
LOCKING WINDOW ALWAYS PRESENT
- 6 LEITERPLATTE VORZUGSWEISE ANGEFAST
PCB CHAMFERED PREFERABLE
- 7 PLATZBEDARF FOR RAHMEN
AREA FOR FRAME
- 8 PR ÜF ÖFFNUNGEN
INSPECTION HOLES
- 9 KLEMMFEDERN NIGHT VOL AUSGESDPRITZTE KONTUR ZUL ßSSIG
CLIPS.SHAPE NOT FULLY MOLDED PERMISSIBLE

- 10 Passende Gegenstecker siehe PN 829 868/966 194
MATING PARTS SEE PN 829 868/966 194
- 12 WITH STROKE LINE DRAWN VERSIONS NOT YET AVAILABLE
- 13 14 15 SIEHE BLATT 2 VON 2
SEE SHEET 2 OF 2
- 16 Aubennuten eingeengt.
Varianten siehe Blatt 2)
GROOVES ON OUTSIDE NARROWED.VERSIONS SEE SHEET 2
- 17 GLOW WIRE TEST 750°C ACC.DIN EN 60695-2-11
WITHOUT FLAME
- 18 OBSOLETE
- 19 PRELIMINARY PART. NOT FOR PRODUCTION
- 20 HOOK DIMENSION, NOT THE DIMENSION FOR MIDDLE WALL



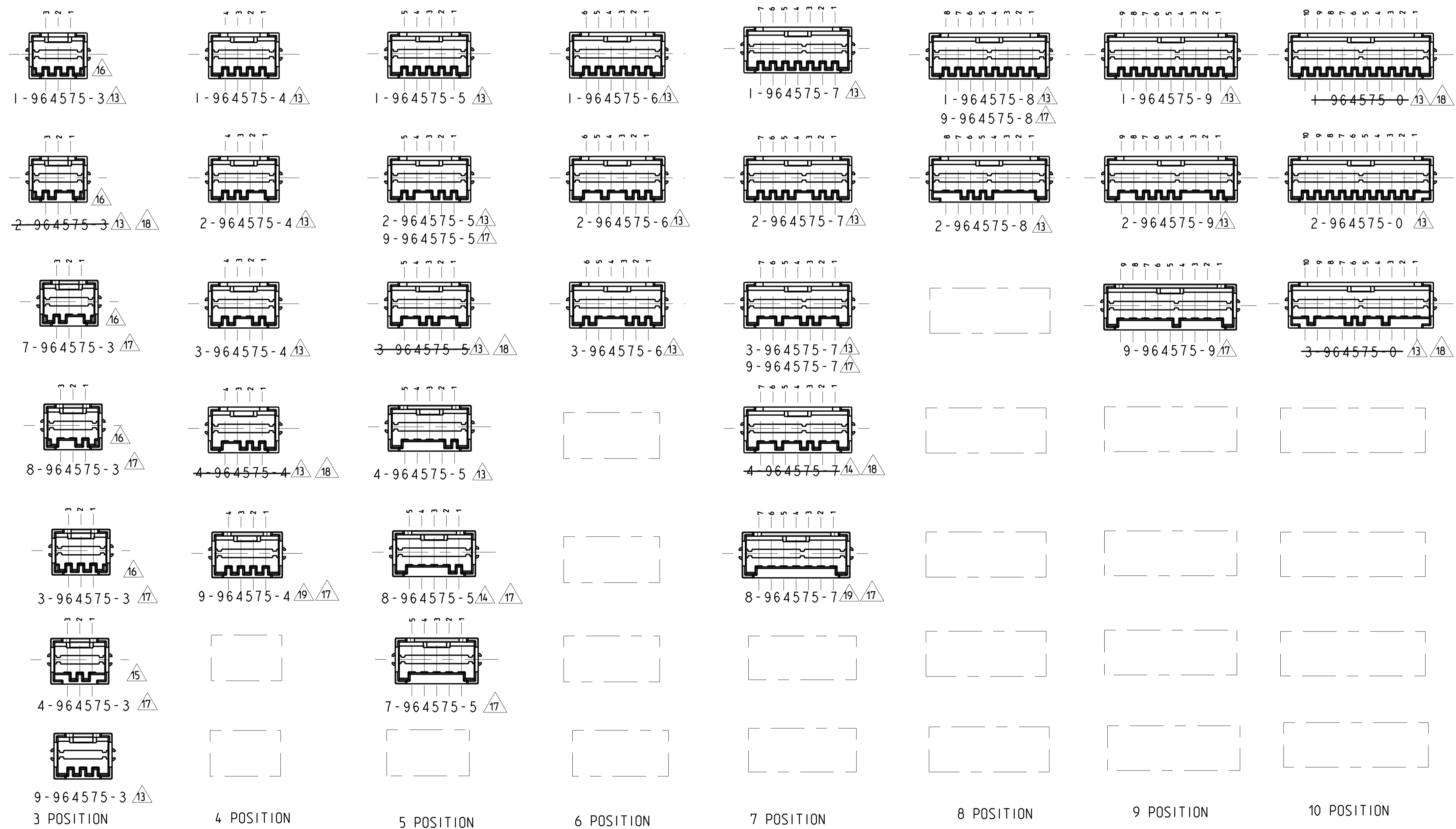
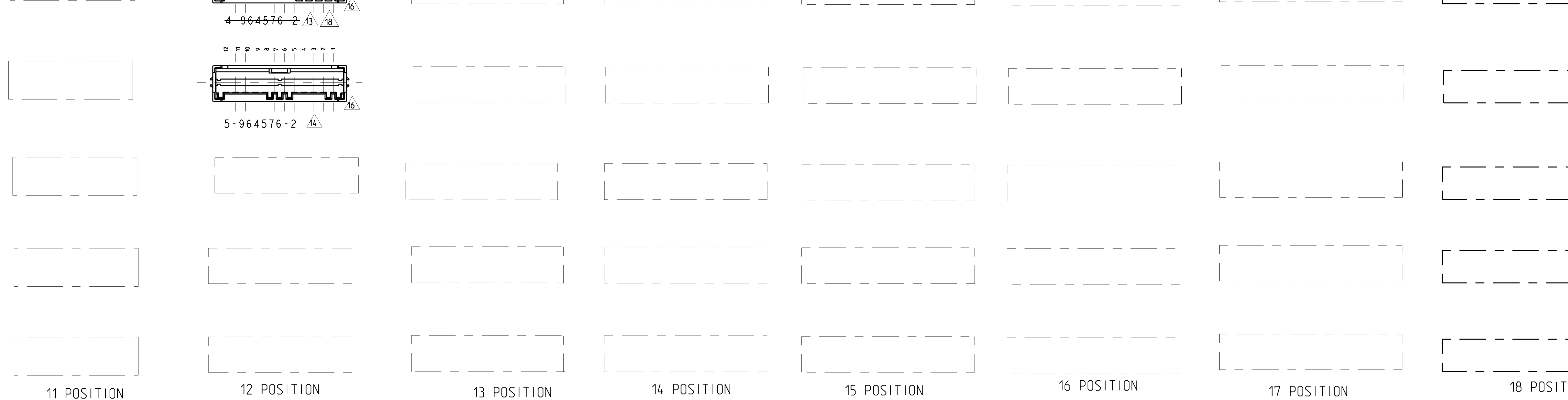
| LOC | | DIST | | REVISIONS | | | |
|-----|---|------|-----|---------------------------|-----------|-----|------|
| A | I | P | LTR | DESCRIPTION | DATE | DWN | APVD |
| | | C17 | | REVISED PER ECR-19-001078 | 1FEB2019 | RS | LZ |
| | | C18 | | ECR-19-011325 | 18JUL2019 | LZ | FL |
| | | C19 | | ECR-20-000612 | 17JAN2020 | SM | FL |
| | | C20 | | ECR-21-104679 | 09JUN2021 | PJ | FL |



TOLERANCE NOT SPECIFIED ±0.1

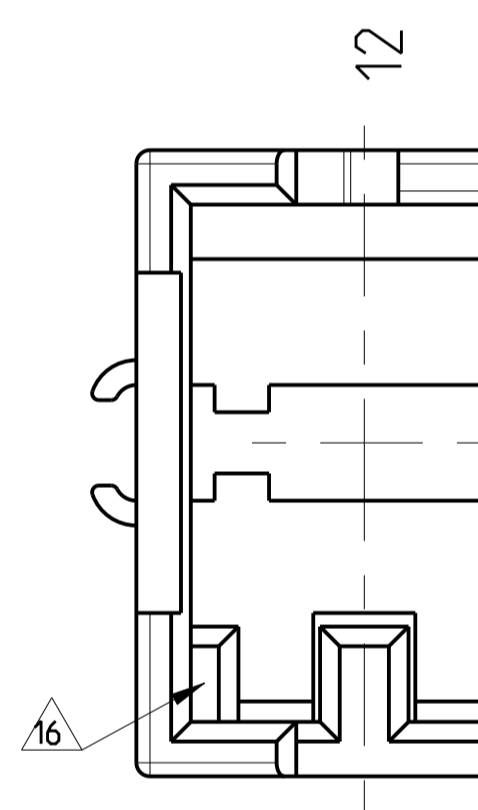
| POS | DIM C | DIM B | DIM A | KEYING VERSIONS SEE SHEET 2 OF 2 | | | | REV | HOUSING PART NO |
|-----|-------|-------|-------|----------------------------------|----|-------|---|----------------------------|-----------------|
| 20 | 49.5 | 52.6 | 47.5 | - | - | - | - | 1- | 964576-0 |
| 19 | 47 | 50.1 | 45.0 | - | - | - | - | 1- 18 | 964576-9 |
| 18 | 44.5 | 47.6 | 42.5 | - | - | - | - | 1- | 964576-8 |
| 17 | 42 | 45.1 | 40.0 | - | - | - | - | 2- 1- | 964576-7 |
| 16 | 39.5 | 42.6 | 37.5 | - | - | - | - | 1- | 964576-6 |
| 15 | 37 | 40.1 | 35.0 | - | - | - | - | 2- 18 1- | 964576-5 |
| 14 | 34.5 | 37.6 | 32.5 | - | - | - | - | 1- | 964576-4 |
| 13 | 32 | 35.1 | 30.0 | - | - | - | - | 1- 18 | 964576-3 |
| 12 | 29.5 | 32.6 | 27.5 | - | - | - | - | 6- 18 5- 4- 18 3- 2- 1- 18 | 964576-2 |
| 11 | 27 | 30.1 | 25.0 | - | - | - | - | 2- 1- | 964576-1 |
| 10 | 24.5 | 27.6 | 22.5 | - | - | - | - | 3- 18 2- 1- 18 | 964575-0 |
| 9 | 22 | 25.1 | 20.0 | - | - | - | - | 2- 1- | 964575-9 |
| 9 | 22 | 25.1 | 20.0 | - | 9- | - | - | A | 964575-9 17 |
| 8 | 19.5 | 22.6 | 17.5 | - | 9- | - | - | A | 964575-8 17 |
| 8 | 19.5 | 22.6 | 17.5 | - | - | - | - | 2- 1- | C 964575-8 |
| 7 | 17 | 20.1 | 15.0 | - | 9- | 8- 19 | - | A | 964575-7 17 |
| 7 | 17 | 20.1 | 15.0 | - | - | - | - | 4- 18 3- 2- 1- | C 964575-7 |
| 6 | 14.5 | 17.6 | 12.5 | - | - | - | - | 3- 2- 1- | C 964575-6 |
| 5 | 12 | 15.1 | 10.0 | - | 9- | 8- 7- | - | A | 964575-5 17 |
| 5 | 12 | 15.1 | 10.0 | - | - | - | - | 4- 3- 18 2- 1- | C 964575-5 |
| 4 | 9.5 | 12.6 | 7.5 | - | 9- | 19 | - | C | 964575-4 17 |
| 4 | 9.5 | 12.6 | 7.5 | - | - | - | - | 4- 18 3- 2- 1- | C 964575-4 |
| 3 | 7 | 10.1 | 5.0 | - | 9- | - | - | 2- 18 1- | C 964575-3 |
| 3 | 7 | 10.1 | 5.0 | - | - | - | - | 4- | C 964575-3 17 |
| 3 | 7 | 10.1 | 5.0 | - | 8- | 7- | - | 3- | A 964575-3 17 |

STE TE CONNECTIVITY
 DIMENSIONS: mm
 TOLERANCES UNLESS OTHERWISE SPECIFIED:
 0 PLC ±0.2
 1 PLC ±0.2
 2 PLC ±0.2
 3 PLC ±0.2
 4 PLC ±0.2
 ANGLES ±0.1°
 FINISH -
 MATERIAL PA 6.6 25%GF UL94 V-0
 DWN ATZMANN 06JULY2019
 CHK BORMUTH 06JULY2019
 NAME AMP DUOPLUG 2.5 SYSTEM PCB RAHMEN
 AMP DUOPLUG 2.5 SYSTEM PCB FRAME (3-20 Posn)
 SIZE CAGE CODE DRAWING NO RESTRICTED TO
 WEIGHT - A I - C=964575
 CUSTOMER DRAWING SCALE 10:1 SHEET 1 OF 2 REV C 20






EXAMPLE:

CAVITY NO.



KEYING BETWEEN CAVITY 10 AND 11

-  COLOR: BLACK
-  COLOR: NATURAL (REDBROWN)
-  NATURAL (BEIGE)

X-ON Electronics

Largest Supplier of Electrical and Electronic Components

Click to view similar products for [Headers & Wire Housings](#) category:

Click to view products by [TE Connectivity](#) manufacturer:

Other Similar products are found below :

[892-18-020-10-001101](#) [58102-G61-06LF](#) [582553-1](#) [0009485154](#) [009176003701906](#) [0050291907](#) [LY20-4P-DT1-P1E-BR](#) [02.125.8002.8](#)
[609-3404](#) [61062-3](#) [61082-181009](#) [622-3653LF](#) [63453-116](#) [636-1030](#) [636-1427](#) [636-3427](#) [636-4007](#) [641938-9](#) [641991-4](#) [644827-2](#) [65817-](#)
[010LF](#) [65817-015LF](#) [65863-015LF](#) [66207-023LF](#) [67095-007LF](#) [67601157](#) [68645-018](#) [68648-049](#) [70.362.1628.0](#) [70-4210](#) [70-4226B](#) [70-](#)
[4853B](#) [707-5020](#) [707-5028](#) [71.350.2428.0](#) [71918-208LF](#) [71961-016LF](#) [733-134](#) [733-162](#) [754199-000](#) [760-3052](#) [787-8014-00](#) [79531-3000](#)
[FCN-360C032-B](#) [FCN-367T-T012/H](#) [FCN-723D010/2](#) [80.063.4001.1](#) [800-90-001-10-001000](#) [800-90-010-10-002000](#) [801-43-002-10-013000](#)