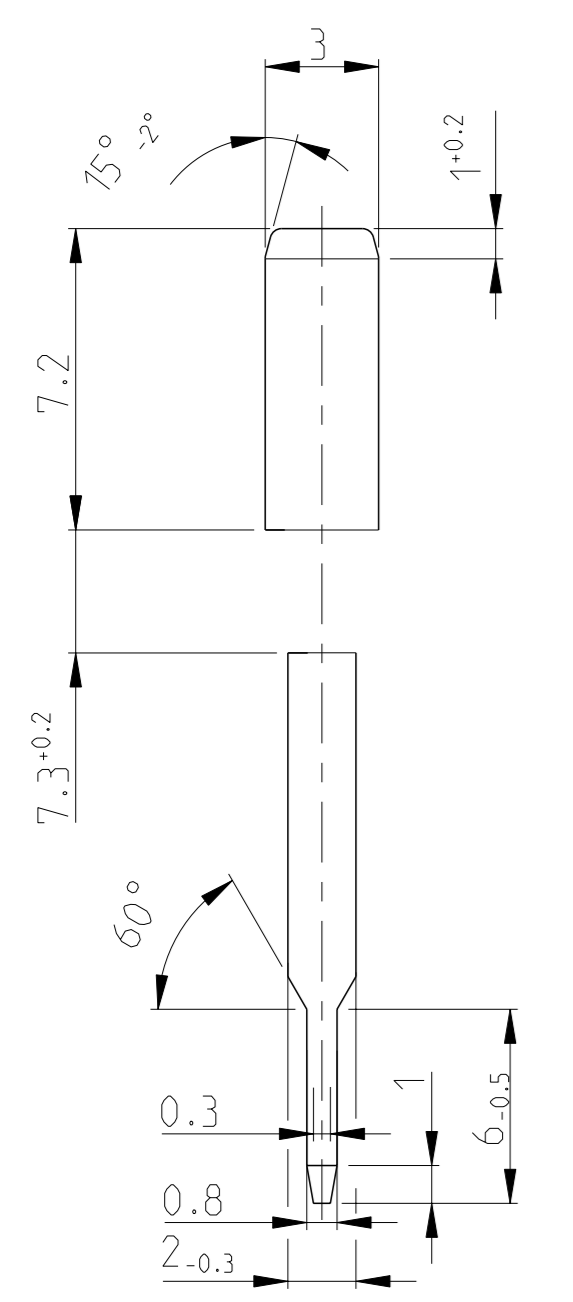
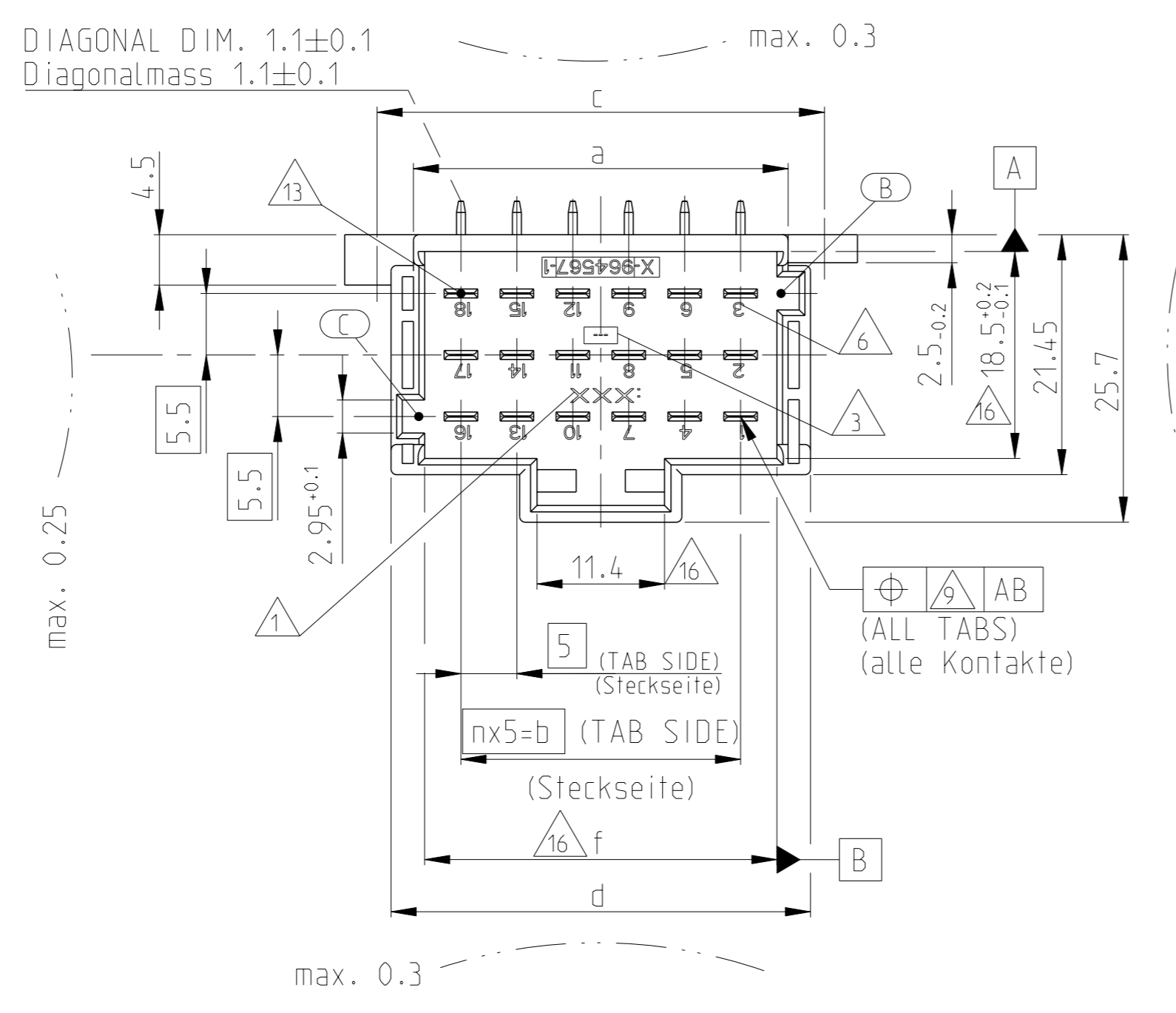
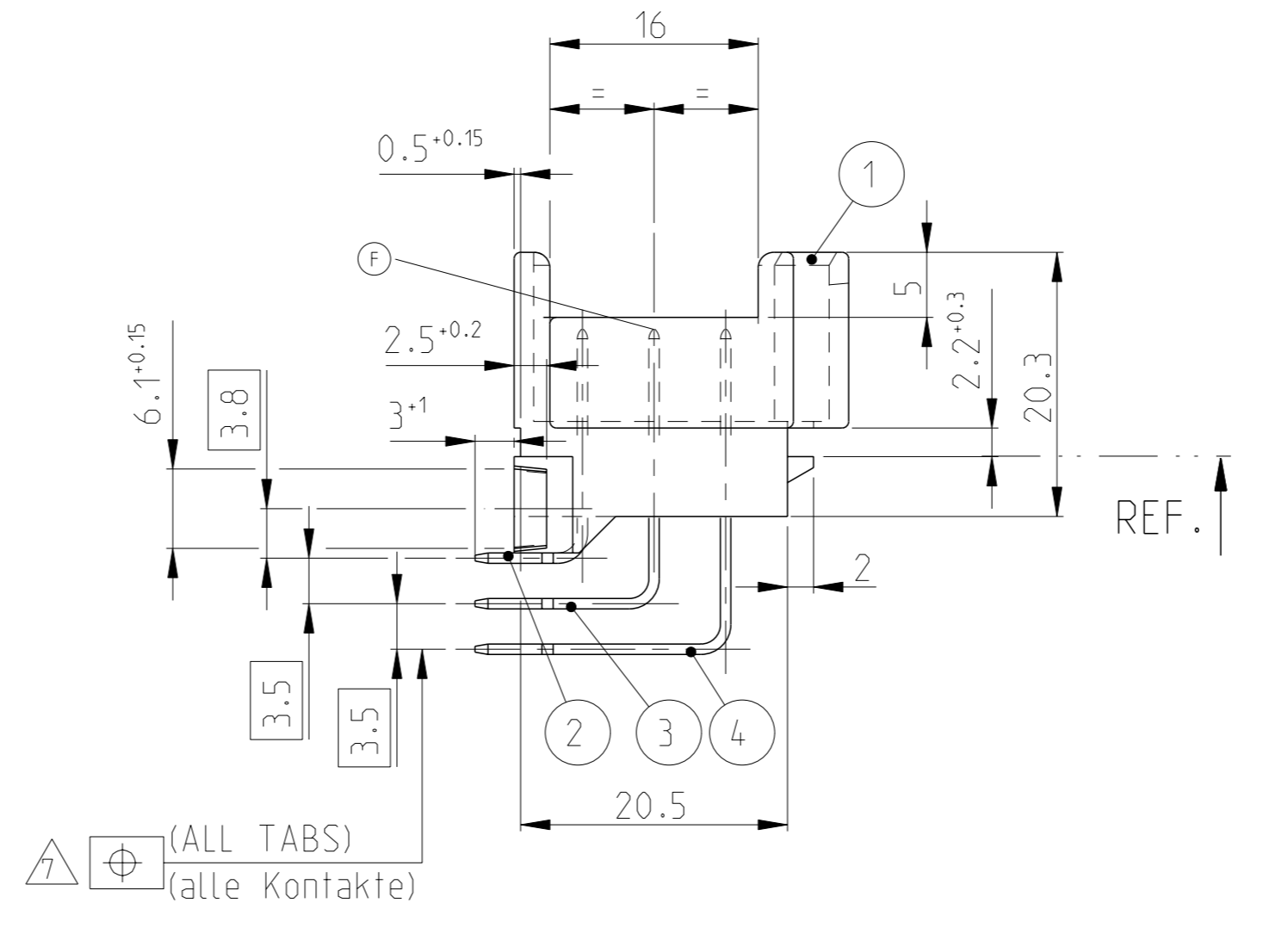
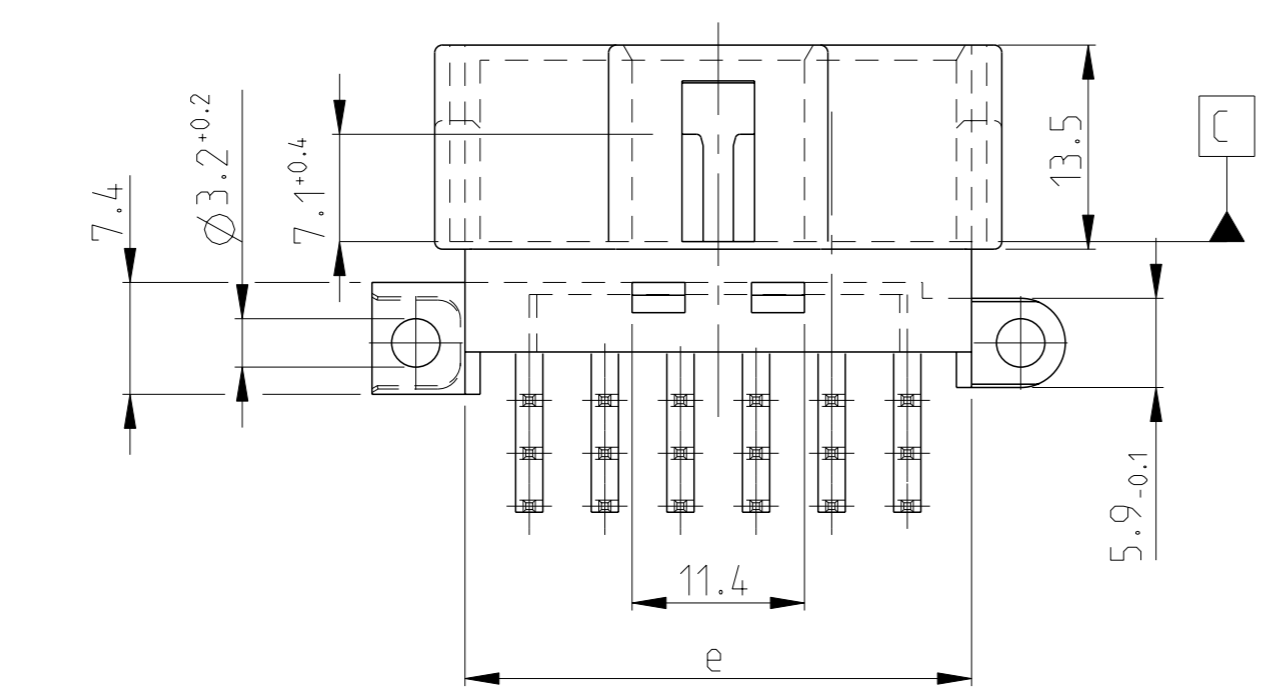
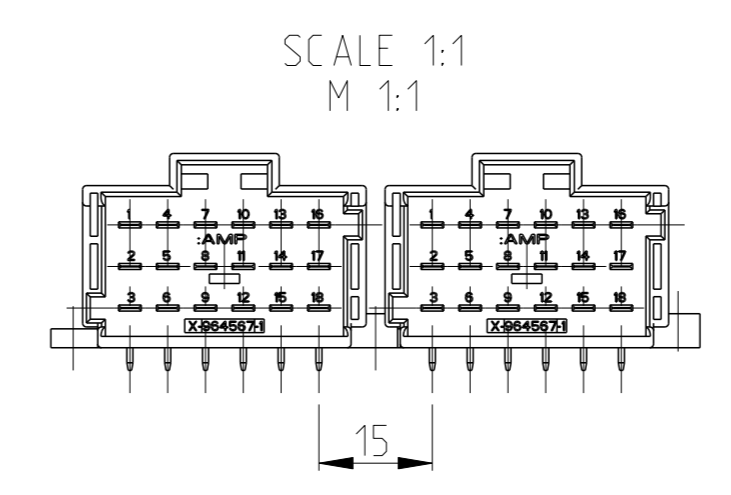
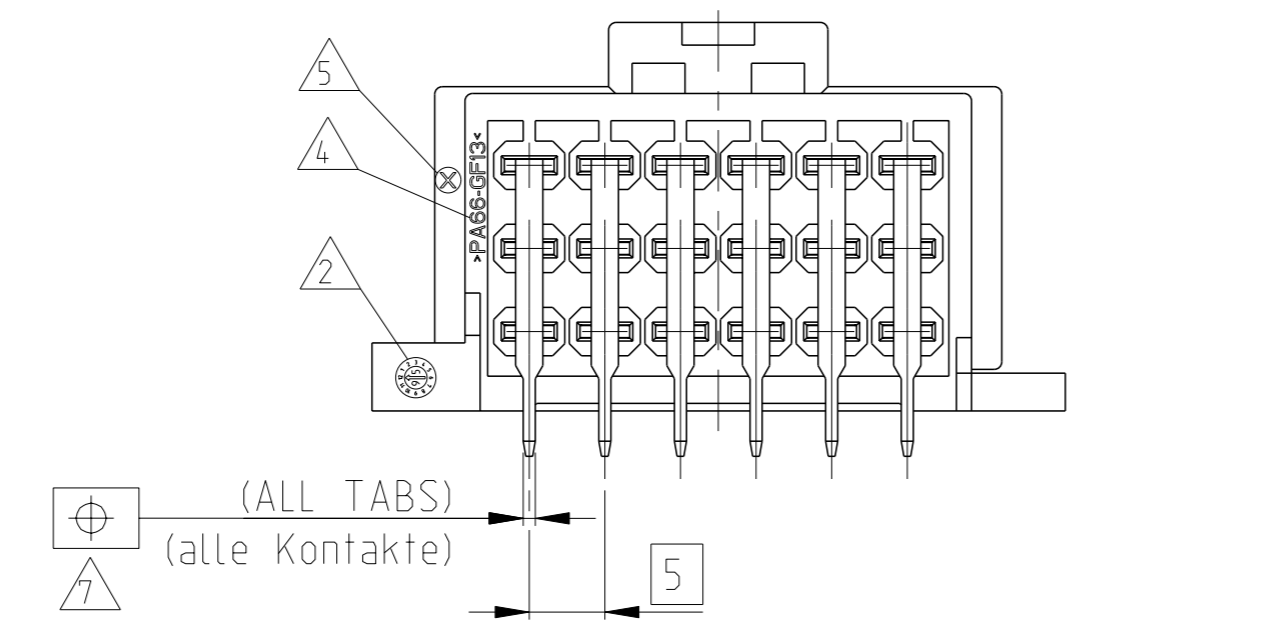
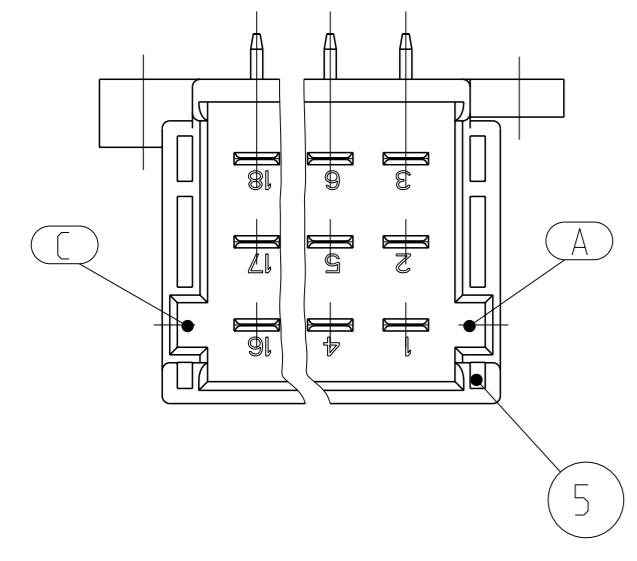


LOC	DIST	F	LYR	REVISIONS ÄNDERUNGEN	DATE	OWN	APVD
A1	-	F8		Drawing clarification (warpage, surface requirements)	20AUG2017	FRAN	BECK
		F9		Drawing clarification (see PCN: E-17-013001)	05SEP2017	FRAN	BECK
		F10		Drawing clarification (see PCN: E-17-017307)	24NOV2017	FRAN	BECK
		F11		Added new note 18	09APR2018	FRAN	BECK



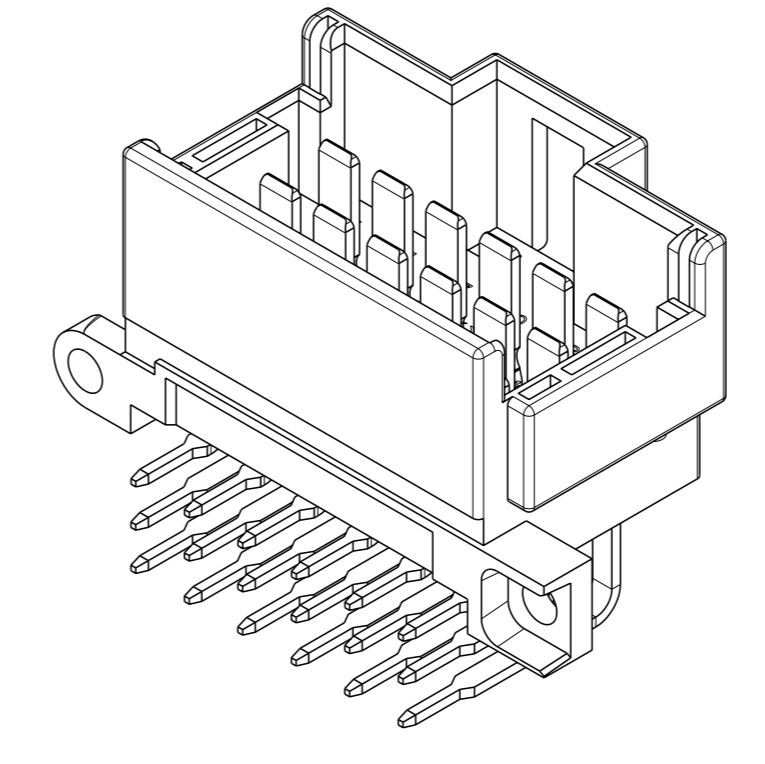
CODING
 Kodierung **B**
 (GROOVES A-C) AS SHOWN
 (Nuten A-C) wie gezeichnet



WARPAGE 0.3 MM IS ACCEPTABLE IN THE MIDDLE OF THE HOUSING FOR EACH SIDE WALL. WARPAGE MUST BE SUBSTRACTED FROM NOMINAL DIMENSION VALUE
 Ein Einfall von 0.3 mm ist fuer die Mitte jeder Seitenwand zulaessig. Der Einfall muss vom Nominalmass substrahiert werden.

-1 WITH CODING mit Kodierung **A**

(GROOVES B-C) AS SHOWN (Nuten B-C) wie gezeichnet

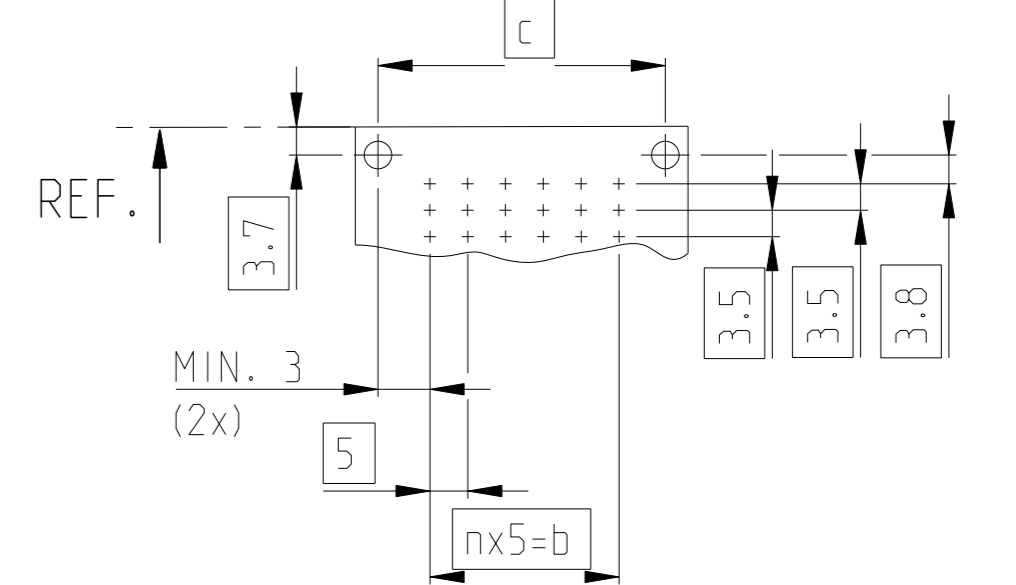


3D-MODEL

NOTES
 Bemerkungen

- 1 ACTIVE COMPANY-LOGO, PART NUMBER HOUSING
 Aktuelles Firmenlogo und Gehaeuse-Teilernr.
- 2 PRODUCTION DATE HOUSING
 Produktionsdatum Gehaeuse
- 3 MOULD REVISION STATUS
 Aenderungsstand Spritzwerkzeuge
- 4 MATERIAL MARKING IN ACC. TO VDA 260
 Werkstoffkennzeichnung nach
- 5 MOULD CAVITY MARKING
 Nestmarkierung
- 6 CAVITY MARKING
 Kammerbezeichnung
- 7 CHECK WITH GAUGE NO. 90-244742 (SOLDER TABS SIDE, DIM'S NOT IN GENERAL TOLERANCES)
 Pruefung mit Stecklehre 90-244742 (Loetseite, Masse unterliegen nicht der Allgemeintoleranz)
- 8 REFERENCE PLANE A RESULTS FROM AVERAGE OF TAB POSITIONS OF MIDDLE ROW AT THE LEVEL OF REFERENCE PLANE C
 Bezugsebene A gemittelt aus Positionen der Tabs der mittleren Reihe auf Niveau der Bezugsebene C
- 9 LINEAR INCREASING FROM Ø0.2 AT THE LEVEL OF REFERENCE PLANE C UP TO Ø0.4 AT THE TOP OF TABS
 Linear zunehmend von Ø0.2 auf Niveau Bezugsebene C bis auf Ø0.4 an Tabspitzen
- 10 -
- 11 SUITABLE MATING CONNECTOR SEE DRAWINGS:
 Passende Gegenstecker siehe Zeichnungen:
 TE-Nr.: 1355071, 1355073
- 12 DOMESTIC PACKAGING (GERMANY): PLASTIC TRAY (ANTISTATIC) IN CORRUGATED SHIPPING BOX
 Inlands-Verpackung (BRO) : Produkttraeger (antistatisch) in Versandkarton
- 13 TAB-INTERFACE ON INQUIRY; TE CONNECTIVITY-No. :
 Flachstecker-Ausfuehrung auf Anfrage; TE CONNECTIVITY-Nr.:
- 14 EXPORT PACKAGING: PLASTIC TRAY (NOT ANTISTATIC) IN CORRUGATED SHIPPING BOX
 Export-Verpackung: Produkttraeger (nicht antistatisch) in Versandkarton
- 15 AVAILABILITY ONLY AFTER RECONSULTING TE CONNECTIVITY
 Verfuegbarkeit nur nach Ruecksprache mit TE CONNECTIVITY
- 16 MEASURED IN THE CORNERS OF THE HOUSING ON THE HOUSING BOTTOM
 In den Gehaeuseecken am Boden gemessen
- 17 GENERAL PLASTIC SURFACE REQUIREMENTS:
 MAXIMUM OFFSET AT PARTING LINE: 0.13 MM
 MAXIMUM FLASH: 0.38 MM
 Allgemeine Oberflaechenanforderungen an den Kunststoff:
 Maximaler Versatz bei Werkzeugtrennlinien: 0.13mm
 Maximaler Spritzgrat: 0.38 mm
- F11 18 WHITE SPOTS ON THE HOUSING SURFACE ARE RESIDUES FROM THE CONDITIONING PROCESS AND ARE NOT A DEFECT
 Weisse Flecken an der Gehaeuseoberflaeche sind Rueckstaende vom Konditionierprozess und stellen keinen Mangel dar

PINHOLE IMAGE FOR PRINTED CIRCUIT BOARD
 Leiterplatten-Lochbild



THIS DRAWING IS A CONTROLLED DOCUMENT. <small>DESES ZEICHNUNGSDOKUMENT WIRD DURCH AMT BEWAKHET UND KONTROLLIERT. ANDERUNGEN SIND DEN ZEICHNUNGSÄNDERUNGSZEICHEN ZU VERFOLGEN. DIE ZEICHNUNGSDOKUMENTE SIND DURCH AMT BEWAKHET UND KONTROLLIERT.</small>		OWN Kilz	260LT94	TE Connectivity
		CHK Hass	260LT94	
DIMENSIONS MASSENMESSUNGEN mm		TOLERANCES UNLESS OTHERWISE SPECIFIED: ALLE DIMENSIONEN	NAME	TAB HEADER, 2.8x0.8, 6-21 POS. Messerleiste, 2.8x0.8, 6-21 pol.
0 PLC ± 0.150 80S 2 PLC ± 0.2 3 PLC ± 0.3 4-PLCC ± 0.2 ANGLES/CHAMFERS FINISCH/OBERFLAECHE/FARBEN		PRODUCT SPEC PRODUCT NO. 108-94624 APPLICATION SPEC VERARBEITUNGSSPEZ.	APVD	
MATERIAL		WEIGHT GEWICHT	SIZE A1	RESTRICTED TO NUR FÜR
SEE PARTS LIST		Customer Drawing	00779	©=966140
			SCALE MASSSTAB 2:1	SHEET BLATT 1 OF 2
			REV F11	

LOC	DIST	REVISIONS			
A1	-	REV	DATE	OWN	APVD
		SEE SHEET 1 OF 2			

POSITIONS Polzahl	n	a±0.2	b	c	d _{-0.2}	e _{-0.25}	f	CODING Kodierung	CAVITY NUMBERING Kammerbezeichnung	ORDER NO. Bestell-Nr.	REV.	ORDER NO. Bestell-Nr.	REV.	WEIGHT Gewicht	POS.	QTY Stueck	DESCRIPTION Benennung Einzelteil	MATERIAL Werkstoff	FINISH Oberflaeche	COLOUR/ Farbe
21	6	38.5	30	45	42.5	38.5	36.5	A (GROOVES Nuten A-C)		5-966140-6 A		4-966140-6 A		18.3g	4	7	TAB (43.4mm)	CuSn0.15/0.20	SEL. SILVER PLATED	
															3	7	TAB (34.4mm)	CuSn0.15/0.20	SEL. SILVER PLATED	
															2	7	TAB (25.4mm)	CuSn0.15/0.20	SEL. SILVER PLATED	
															5	1	21 POS. HOUSING	PA66-GF13	NATURAL/natur	
															4	7	TAB (43.4mm)	CuSn4	SEL. SILVER PLATED	
															3	7	TAB (34.4mm)	CuSn4	SEL. SILVER PLATED	
18	5	33.5	25	40	37.5	33.5	31.5	A (GROOVES Nuten B-C)		6-966140-6 C		3-966140-6 C		18.3g	2	7	TAB (25.4mm)	CuSn4	SEL. SILVER PLATED	
															1	1	21 POS. HOUSING	PA66-GF13	BLACK/schwarz	
															4	6	TAB (43.4mm)	CuSn4	SEL. SILVER PLATED	
															3	6	TAB (34.4mm)	CuSn4	SEL. SILVER PLATED	
															2	6	TAB (25.4mm)	CuSn4	SEL. SILVER PLATED	
															1	1	18 POS. HOUSING	PA66-GF13	BLACK/schwarz	
15	4	28.5	20	35	32.5	28.5	26.5	A (GROOVES Nuten B-C)		6-966140-1 C		3-966140-1 C		16.0g	4	6	TAB (43.4mm)	CuSn4	SEL. SILVER PLATED	
															2	6	TAB (34.4mm)	CuSn4	SEL. SILVER PLATED	
															3	6	TAB (25.4mm)	CuSn4	SEL. SILVER PLATED	
															1	1	18 POS. HOUSING	PA66-GF13	BLACK/schwarz	
															4	5	TAB (43.4mm)	CuSn4	SEL. SILVER PLATED	
															3	5	TAB (34.4mm)	CuSn4	SEL. SILVER PLATED	
12	3	23.5	15	30	27.5	23.5	21.5	A (GROOVES Nuten B-C)		6-966140-2 C		3-966140-2 C		13.6g	2	5	TAB (25.4mm)	CuSn4	SEL. SILVER PLATED	
															1	1	15 POS. HOUSING	PA66-GF13	BLACK/schwarz	
															4	4	TAB (43.4mm)	CuSn4	SEL. SILVER PLATED	
															3	4	TAB (34.4mm)	CuSn4	SEL. SILVER PLATED	
															2	4	TAB (25.4mm)	CuSn4	SEL. SILVER PLATED	
															5	1	12 POS. HOUSING	PA66-GF13	NATURAL/natur	
9	2	18.5	10	25	22.5	18.5	16.5	A (GROOVES Nuten B-C)		6-966140-3 C		3-966140-3 C		11.2g	4	3	TAB (43.4mm)	CuSn4	SEL. SILVER PLATED	
															3	3	TAB (34.4mm)	CuSn4	SEL. SILVER PLATED	
															2	3	TAB (25.4mm)	CuSn4	SEL. SILVER PLATED	
															1	1	9 POS. HOUSING	PA66-GF13	BLACK/schwarz	
															4	3	TAB (43.4mm)	CuSn4	SEL. SILVER PLATED	
															3	3	TAB (34.4mm)	CuSn4	SEL. SILVER PLATED	
6	1	13.5	5	20	17.5	13.5	11.5	A (GROOVES Nuten B-C)		6-966140-4 C		3-966140-4 C		8.9g	1	1	9 POS. HOUSING	PA66-GF13	BLACK/schwarz	
															4	2	TAB (43.4mm)	CuSn4	SEL. SILVER PLATED	
															3	2	TAB (34.4mm)	CuSn4	SEL. SILVER PLATED	
															2	2	TAB (25.4mm)	CuSn4	SEL. SILVER PLATED	
															1	1	6 POS. HOUSING	PA66-GF13	BLACK/schwarz	
															4	2	TAB (43.4mm)	CuSn4	SEL. SILVER PLATED	

POSITIONS Polzahl	n	a±0.2	b	c	d _{-0.2}	e _{-0.25}	f	CODING Kodierung	CAVITY NUMBERING Kammerbezeichnung	ORDER NO. Bestell-Nr.	REV.	ORDER NO. Bestell-Nr.	REV.	WEIGHT Gewicht	POS.	QTY Stueck	DESCRIPTION Benennung Einzelteil	MATERIAL Werkstoff	FINISH Oberflaeche	COLOUR/ Farbe
21	6	38.5	30	45	42.5	38.5	36.5	B (GROOVES Nuten A-C)		8-966140-6 A		1-966140-6 A		18.3g	4	7	TAB (43.4mm)	CuSn4	TINNED/verzinkt	
															3	7	TAB (34.4mm)	CuSn4	TINNED/verzinkt	
															2	7	TAB (25.4mm)	CuSn4	TINNED/verzinkt	
															5	1	21 POS. HOUSING	PA66-GF13	NATURAL/natur	
															4	7	TAB (43.4mm)	CuSn4	TINNED/verzinkt	
															3	7	TAB (34.4mm)	CuSn4	TINNED/verzinkt	
18	5	33.5	25	40	37.5	33.5	31.5	A (GROOVES Nuten B-C)		9-966140-6 F		966140-6 F		18.3g	2	7	TAB (25.4mm)	CuSn4	TINNED/verzinkt	
															1	1	21 POS. HOUSING	PA66-GF13	BLACK/schwarz	
															4	6	TAB (43.4mm)	CuSn4	TINNED/verzinkt	
															3	6	TAB (34.4mm)	CuSn4	TINNED/verzinkt	
															2	6	TAB (25.4mm)	CuSn4	TINNED/verzinkt	
															1	1	18 POS. HOUSING	PA66-GF13	BLACK/schwarz	
15	4	28.5	20	35	32.5	28.5	26.5	A (GROOVES Nuten B-C)		9-966140-1 F		966140-1 F		16.0g	4	5	TAB (43.4mm)	CuSn4	TINNED/verzinkt	
															3	5	TAB (34.4mm)	CuSn4	TINNED/verzinkt	
															2	5	TAB (25.4mm)	CuSn4	TINNED/verzinkt	
															1	1	15 POS. HOUSING	PA66-GF13	BLACK/schwarz	
															4	5	TAB (43.4mm)	CuSn4	TINNED/verzinkt	
															3	5	TAB (34.4mm)	CuSn4	TINNED/verzinkt	
12	3	23.5	15	30	27.5	23.5	21.5	B (GROOVES Nuten A-C)		8-966140-2 F		966140-2 F		13.6g	2	5	TAB (25.4mm)	CuSn4	TINNED/verzinkt	
															1	1	15 POS. HOUSING	PA66-GF13	BLACK/schwarz	
															4	4	TAB (43.4mm)	CuSn4	TINNED/verzinkt	
															3	4	TAB (34.4mm)	CuSn4	TINNED/verzinkt	
															2	4	TAB (25.4mm)	CuSn4	TINNED/verzinkt	
															5	1	12 POS. HOUSING	PA66-GF13	NATURAL/natur	
9	2	18.5	10	25	22.5	18.5	16.5	A (GROOVES Nuten B-C)		9-966140-3 F		966140-3 F		11.2g	4	4	TAB (43.4mm)	CuSn4	TINNED/verzinkt	
															3	4	TAB (34.4mm)	CuSn4	TINNED/verzinkt	
															2	4	TAB (25.4mm)	CuSn4	TINNED/verzinkt	
															1	1	12 POS. HOUSING	PA66-GF13	BLACK/schwarz	
															4	4	TAB (43.4mm)	CuSn4	TINNED/verzinkt	
															3	4	TAB (34.4mm)	CuSn4	TINNED/verzinkt	
6	1	13.5	5	20	17.5	13.5	11.5	A (GROOVES Nuten B-C)		9-966140-4 F		966140-4 F		8.9g	4	3	TAB (43.4mm)	CuSn4	TINNED/verzinkt	
															3	3	TAB (34.4mm)	CuSn4	TINNED/verzinkt	
															2	3	TAB (25.4mm)	CuSn4	TINNED/verzinkt	
															1	1	9 POS. HOUSING	PA66-GF13	BLACK/schwarz	
															4	3	TAB (43.4mm)	CuSn4	TINNED/verzinkt	
															3	3	TAB (34.4mm)	CuSn4	TINNED/verzinkt	
6	1	13.5	5	20	17.5	13.5	11.5	A (GROOVES Nuten B-C)		9-966140-5 F		966140-5 F		6.6g	4	2	TAB (43.4mm)	CuSn4	TINNED/verzinkt	
															3	2	TAB (34.4mm)	CuSn4	TINNED/verzinkt	
															2	2	TAB (25.4mm)	CuSn4	TINNED/verzinkt	
															1	1	6 POS. HOUSING	PA66-GF13	BLACK/schwarz	
															4	2	TAB (43.4mm)	CuSn4	TINNED/verzinkt	
															3	2	TAB (34.4mm)	CuSn4	TINNED/verzinkt	

THIS DRAWING IS A CONTROLLED DOCUMENT.		OWN Mahnke, B.	160CT2014	 TE Connectivity
DIMENSIONS: mm		CHK Krauss, S.	170CT2014	
TOLERANCES UNLESS OTHERWISE SPECIFIED:		APVD Goepffel, C.	200CT2014	
 0 PLC ± 1 PLC ± 2 PLC ± 3 PLC ± 4 PLC ± ANGLES ±0°		PRODUCT SPEC		
MATERIAL SEE PARTS LIST		FINISH SEE PARTS LIST	WEIGHT	NAME TAB HEADER, 2.8x0.8, 6-21 POS. Messerleiste, 2.8x0.8, 6-21 pol. SIZE A1 CAGE CODE 00779 DRAWING NO. 966140 RESTRICTED TO Customer Drawing SCALE 2:1 SHEET 2 OF 2 REV. 11

X-ON Electronics

Largest Supplier of Electrical and Electronic Components

Click to view similar products for [Headers & Wire Housings](#) category:

Click to view products by [TE Connectivity](#) manufacturer:

Other Similar products are found below :

[95000-104TRLF](#) [10135584-644402LF](#) [DF62W-EP2022PCA](#) [95000-106TRLF](#) [DF62W-2022SCA](#) [DF62W-EP2022PC](#) [2203348](#) [DF62W-2022SC](#) [1084018](#) [1029039](#) [1084017](#) [802-10-012-10-002000](#) [1112640](#) [1112639](#) [891-007-9SS-BST1T](#) [000-34000](#) [0008550134](#) [0009482033](#) [0009507031](#) [57102-F02-18ULF](#) [57102-S06-03LF](#) [57202-S52-04LF](#) [PCN6-15S-2.5E](#) [0039019024](#) [58102-G61-06LF](#) [582553-1](#) [0009485154](#) [0009508121](#) [0022285053](#) [0050291907](#) [018731A](#) [LY20-4P-DT1-P1E-BR](#) [02.125.8002.8](#) [60101931](#) [60598-1 \(Cut Strip\)](#) [M1625-3R/100](#) [61062-3](#) [61082-181009](#) [CSU011177004](#) [636-1427](#) [638009-1](#) [641938-9](#) [641991-4](#) [644168-1](#) [644827-2](#) [647662-1](#) [65039-019ELF](#) [65692-001LF](#) [65781-018](#) [65781-047](#)