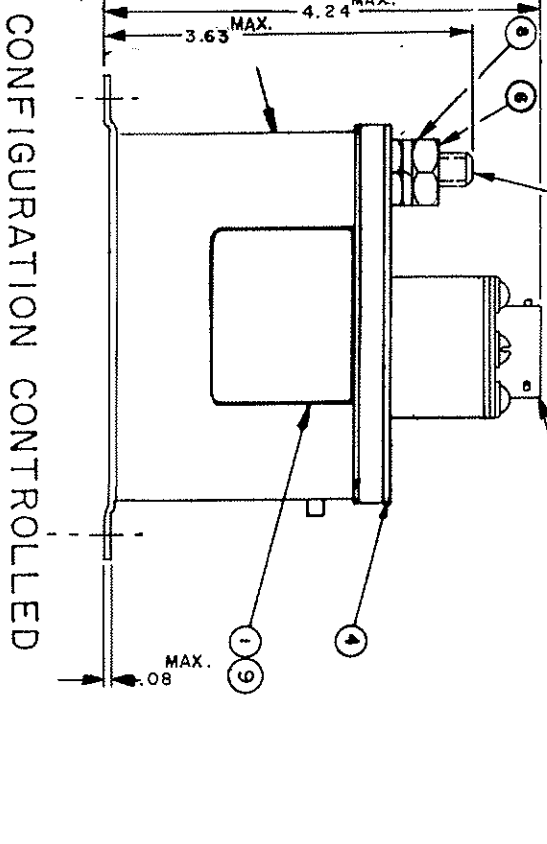
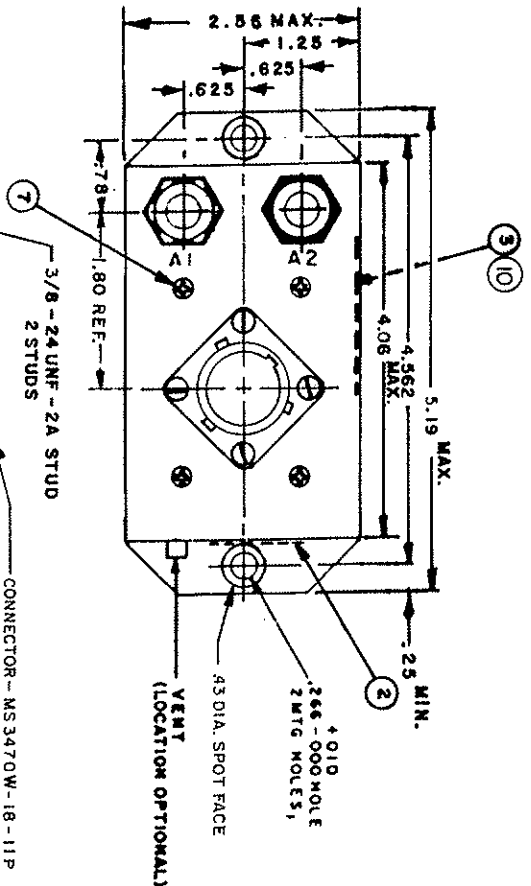
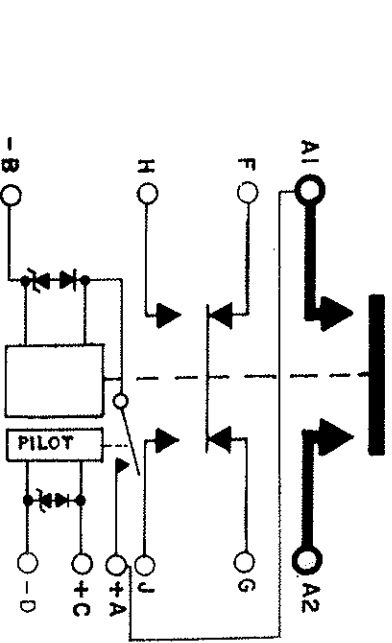


REVISEMENTS		DWG NO. A-703AK	MAY
REV	DESCRIPTION	DATE	APPROVED
A	ADDED ITEMS 9 & 10	10-14-91	



CONFIGURATION CONTROLLED



NOTES: 1. THIS UNIT MEETS THE MATERIALS & WORKMANSHIP REQUIREMENTS OF MIL - R - 6106
 2. REMOVE FINISH FROM MTG. SURFACE

ITEM NO	QTY	PART OR IDENTIFYING NO	NOMENCLATURE OR DESCRIPTION	FSCM NO	DRAWING OR SPECIFICATION	MATERIAL OR NOTE
10	1	39529-038	OVERLAY			
9	1	39529-001	OVERLAY			
8	2	51807-084	WASHER-LOCK, 3/8x.686x.094 SP	MS35336-103		BRONZE
7	4	51200-020	SCREW-NO.4x1/4 SHEET METAL	MS24626-9		STAINLESS STEEL
6	2	50407-164	NUT, 3/8-24x5/8x7/32 HEX	MS35650-3385		BRASS
5	1	32687-100	CONTACTOR ASSEMBLY-PRI.			
4	1	32232-002	PLATE - BASE COVER			
3	1	42279-001	PLATE - WIRING DIAGRAM			
2	1	25695-001	PLATE - WARNING			
1	1	16045-001	PLATE - NAME			

UNLESS OTHERWISE SPECIFIED DIMENSIONS ARE IN INCHES
 2 PL. DEC. 1/3 PL. DEC. 1/4 ANGLES
 F. 06 F. 010 F. 10

REF. MDC 500046-1
 HARTMAN ELECTRICAL MANUFACTURING
 MANSFIELD, OHIO
 CONTACTOR
 400 AMP, 28 VOLTS
 SIZE C FSCM NO 74063 DWG NO A-703AK
 SCALE: NONE SHEET 1 OF 2

REV. NO.	DESCRIPTION	DATE	APPROVED
1	SEE SHEET ONE		

CONSTRUCTION
MAIN CONTACTS
VOLTAGE (NOMINAL)
CURRENT:

SPST N.O.
28 VDC
400 AMP
1000 AMP FOR 30 SEC.
1500 AMP INRUSH

AUXILIARY CONTACTS
CONFIGURATION
VOLTAGE
CURRENT RES.
SURGE

FORM Z
28 VDC -115V, 400 HZ
5 AMP, 10 AMP CARRY ONLY
30 AMP CARRY ONLY FOR 0.1 SEC.

COIL DATA
DUTY CYCLE
NOMINAL VOLTAGE
PICKUP MAX.
PULL THROUGH

INTERMITTENT
16-31 VDC
10 VDC
6 VDC MAX. AT 77°F
7+0
7-6

DROPOUT VOLTAGE
RESISTANCE
TRANSIENT SUPPRESSION
OPERATE TIMES
PICKUP
DROPOUT

14 OHM ± 20% AT 77°F
± 45 V MAX.
35 MS MAX. AT 28 VDC
35 MS MAX. AT 28 VDC
.004 SEC. MAX. MAKE
.003 SEC. MAX. BREAK NO. ONLY

CONTACT BOUNCE
ENVIRONMENTAL DATA
AMBIENT TEMP.
LIFE ELECTRICAL
LIFE MECHANICAL
WEIGHT MAX.

-67°F TO +160°F
15,000 CYCLES MIN.
100,000 CYCLES
2 LBS. 3 OZ.

PILOT RELAY

CONTACT CONFIGURATION
VOLTAGE NOMINAL
CURRENT
COIL DUTY
COIL CURRENT AT 31V

PICKUP
DROPOUT
TRANSIENT SUPPRESSION

SPST
28 VDC
5 AMP
CONTINUOUS
.15 AMP MAX.
18V, MAX.
7V, MAX.
± 45 V

NOTE:
DIODES ARE JANTX GLASS CASE 1000 PIV
ZENERS ARE JANTX GLASS CASE

CONFIGURATION CONTROLLED

UNLESS OTHERWISE SPECIFIED DIMENSIONS ARE IN INCHES TOLERANCES ON		REF.		HARTMAN ELECTRICAL MANUFACTURING MANFIELD, OHIO	
±	2 PL DEC.	±	3 PL DEC.	±	ANGLES
MATERIAL		MDC 5D0046-1		DR BY H.A.S. 15-10-91	
		CHECKED		ENGINEER	
		MFE		RELEASE	
DASH NO		NEXT ASSY		USED ON	
APPLICATION		SIZE		FSCM NO.	
		C		74063	
		DWG NO.		A-703AK	
		SCALE		SHEET 2 OF 2	
		400 AMP 28 VOLTS CONTACTOR			

X-ON Electronics

Largest Supplier of Electrical and Electronic Components

Click to view similar products for [General Purpose Relays](#) category:

Click to view products by [TE Connectivity](#) manufacturer:

Other Similar products are found below :

[PCN-105D3MH,000](#) [59641F200](#) [5JO-1000CD-SIL](#) [LY1SAC110120](#) [5X827E](#) [5X837F](#) [5X840F](#) [5X842F](#) [5X848E](#) [LY2N-AC120](#) [LY2S-AC220/240](#) [LY2-US-AC120](#) [LY3-US-AC120](#) [LY4F-UA-DC12](#) [LY4F-UA-DC24](#) [LY4F-US-AC120](#) [LY4F-US-AC240](#) [LY4F-US-DC24](#) [LY4F-VD-AC110](#) [LYQ20DC12](#) [M115C60](#) [M115N010](#) [M115N0150](#) [6031007G](#) [603-12D](#) [61211T0B4](#) [61212T400](#) [61222Q400](#) [61243B600](#) [61243C500](#) [61243Q400](#) [61311BOA2](#) [61311BOA6](#) [61311BOA8](#) [61311C0A2](#) [61311COA1](#) [61311COA6](#) [61311F0A2](#) [61311QOA1](#) [61311QOA4](#) [61311T0D6](#) [61311TOA6](#) [61311TOA7](#) [61311TOB3](#) [61311TOB4](#) [61311U0A6](#) [61312Q600](#) [61312T400](#) [61312T600](#) [61313U200](#)