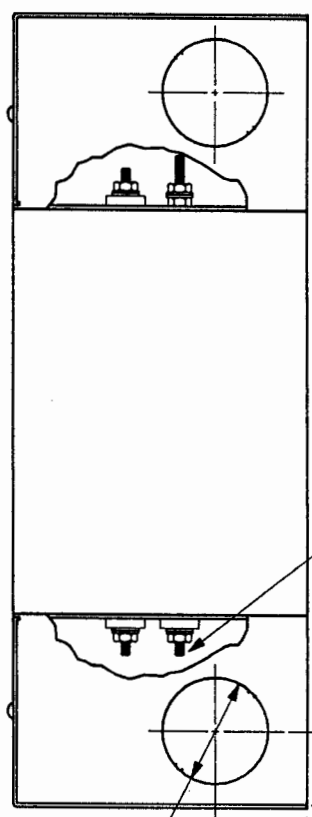
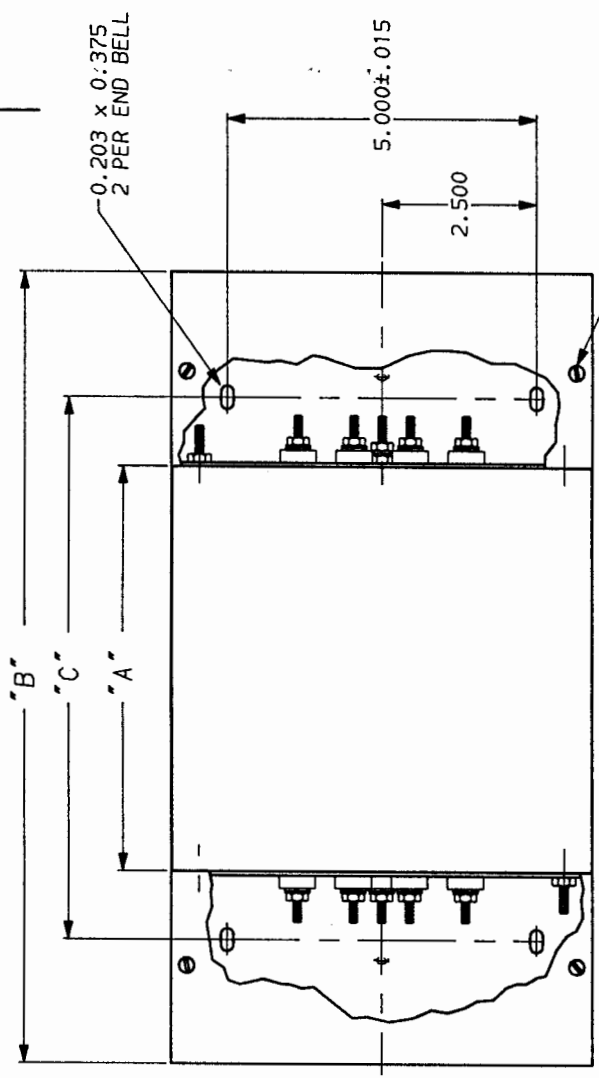
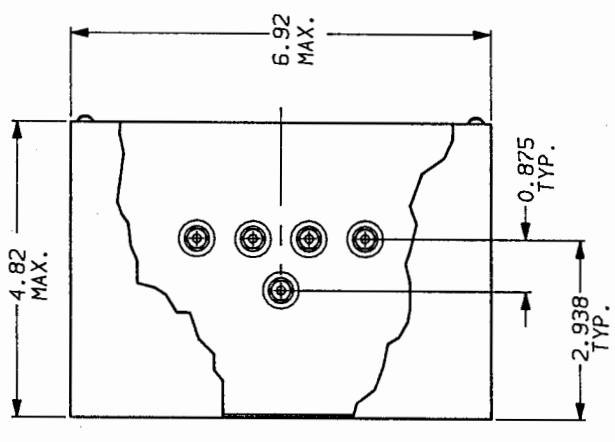


PART NO.	DIM. "A" MAX.	DIM. "B" MAX.	DIM. "C" ±.030
45/60AYP6C	7.16	13.610	9.656
45/60AYT6C	11.58	18.030	14.076

SHEET 1 OF 1

APPROVED	DATE	REV
<i>[Signature]</i>	11-30-87	2



SCREW, TIE DOWN COVER  
(4) PER UNIT

END BELL KIT AA 407

LIBERTYVILLE, IL 60048  
45AYP6C & 45AYT6C/60AYP6C & 60AYT6C WITH END BELLS

SCALE	DATE	DRG. NO.	REV.
.5x	9-13-88	45AYT6C-45AYP6C, 02	
DRW. BY	ORIGINATOR		
LJD	HKP		

This document is proprietary to CORCOM INC. and is not to be reproduced nor used for manufacturing purposes except on CORCOM's order or prior written consent.

NOTE: UNLESS OTHERWISE SPECIFIED, TOLERANCE TO BE ±.030

## X-ON Electronics

Largest Supplier of Electrical and Electronic Components

*Click to view similar products for [Power Line Filters](#) category:*

*Click to view products by [TE Connectivity](#) manufacturer:*

Other Similar products are found below :

[6609019-3](#) [6609026-5](#) [6609030-6](#) [6609973-2](#) [D30A](#) [7-1609090-5](#) [F2810](#) [F4456A](#) [F7382Z](#) [F7863Z](#) [FAHAV3100ZC000](#) [806276](#) [FN2020B-1-06](#) [FN2080B-10-06](#) [FN2410H-32-33](#) [FP144](#) [FS4153-20-06](#) [FS4353-500-99](#) [12-MMB-030-11-D](#) [DB4-393](#) [15811T200](#) [20B1](#) [LC630](#) [2B1](#) [1609080-2](#) [1609993-8](#) [1-6609070-1](#) [F1100AA02](#) [F1150CC10](#) [F1500CA10](#) [F1500CA15](#) [F4041Z](#) [F7585E](#) [1B1](#) [FN2070A-16-06](#) [FN2090A-20-06](#) [FN2090B-12-06](#) [FN2090Z-1-06](#) [FN2410H-25-33](#) [FN2410H-60-34](#) [FN2410H-8-44](#) [FN2412H-8-44](#) [FN323B-6-01](#) [FN3258H-130-35](#) [FN610R-3-06](#) [20EHQ7](#) [20EHZ7](#) [20K1](#) [30B6](#) [3K1](#)