

## Introducing Cold Applied Splices

## KEY FEATURES

One-step termination and environmental protection

No heating required for installation — safe for use on fueled aircraft

Reliable in a wide variety of environmental conditions

Achieve environmental performance while maintaining:

- Small profile
- Electrical performance

Easy installation and application flexibility

Prevents water ingress under permanent pressure/weight

## DESCRIPTION

The cold applied splice product line is designed as a single component in-line splice to provide high environmental protection to seal the termination from moisture and provide electrical isolation. If moisture is present, it can lead to insulation failure and breakdown of the electrical connection.

In this product, sealing is achieved by replacing traditional methods, such as grommets, greases and tapes with a novel Tyco Electronics gel technology. The electrical isolation is provided by a polymer outer layer.

## APPLICATIONS

Ideal for aerospace and defense application where performance and reliability is essential

Designed to provide an immersion resistant in-line splice on 1:1 wires

- Wide range from 26 AWG to 12 AWG
- Nickel-plated, silver-plated, and tin-plated conductors
- Insulation rated for at least 135° C

Protects and seals on all conventional MIL spec and commercial wire insulation systems

## STANDARDS & SPECS

Meets or exceeds the following:

- SAE-AMS-DTL-23053/8 (Insulation sleeve)
- SAE-AS81824/12

Under qualification for SAE AS81824 and AS81824/12

## ORDERING INFORMATION

Minimum order quantity: 500 pieces for all sizes

## ENVIRONMENTAL

Temperature range:	-65° C to 150° C
Dielectric strength:	2,500 V Maximum
Insulation resistance:	5,000 Mega-ohms minimum
Altitude immersion:	75,000 ft.
Fluid resistance:	MIL-L-7808, MIL-L-3699, MIL-H-5605 (Hydraulic), MIL-A-8243, MIL-C-59769, and MIL-T-5624 (JP-5)

## ELECTRICAL

Current rating as defined by the size of crimp, gauge of wire and specification

## MECHANICAL

Cold splice tensile strength exceeds strength of spliced wire

# Cold Applied Splices

## PHYSICAL OR OTHER PROPERTIES

Cross-linked gel technology:

- Proven gel sealing system
- Versatile gel closure
- Non-flowing gel

## MATERIALS

Insulation sleeve:	Transparent polyvinylidene fluoride
Metal crimp splice:	Tin plated copper
End caps:	Thermoplastic, color coded
Gel:	Clear flame-retardant silicone based gel

## APPLICATION TOOLING

Cold Applied Crimp Tool: AD-1381

Under qualification per M22520/44-01

AD-1381 or approved M22520/44-01 crimp tool **must be** used for proper installation of these devices

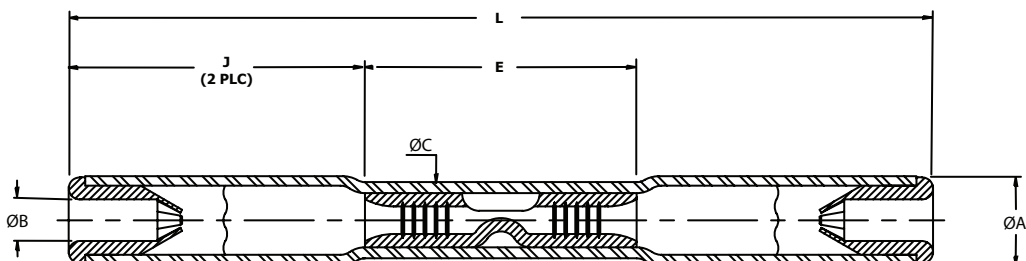


AD-1381 Tool

## PART NUMBERS

Part Number	Wire Range	L ± 1.0 (±0.040)	∅A ± 0.5 (±0.020)	∅B ± 0.25 (±0.010)	∅C ± 0.5 (±0.020)	E ± 0.25 (±0.010)	J ± 0.25 (±0.010)	End Cap Color Code (Both Ends)
D-436-36-COLD	26-24-22-20	36.8 (1.450)	4.2 (0.165)	2.0 (0.080)	3.7 (0.145)	12.1 (0.475)	12.7 (0.500)	Red
D-436-37-COLD	18-16	38.7 (1.525)	5.1 (0.200)	2.9 (0.115)	4.5 (0.175)	14.3 (0.565)	12.7 (0.500)	Blue
D-436-38-COLD	14-12	38.7 (1.525)	5.9 (0.235)	3.8 (0.150)	5.2 (0.205)	14.3 (0.565)	12.7 (0.500)	Yellow

Dimensions are in inches.



## FOR MORE INFORMATION

### Technical Support

Internet: [www.tycoelectronics.com/ADM](http://www.tycoelectronics.com/ADM)  
E-mail: [product.info@tycoelectronics.com](mailto:product.info@tycoelectronics.com)

USA: +1 (800) 522-6752  
Canada: +1 (905) 470-4425  
Mexico: +52 (0) 55-1106-0814  
C. America: +52 (0) 55-1106-0814  
South America: +55 (0) 11-2103-6000  
Germany: +49 (0) 6251-133-1999  
Great Britain: +44 (0) 8706-080208  
France: +33 (0) 1-3420-8686  
Netherlands: +31 (0) 73-6246-999  
China: +86 (0) 400-820-6015

**Tyco Electronics Corporation**  
Menlo Park, CA

[tycoelectronics.com/ADM](http://tycoelectronics.com/ADM)

©2010 Tyco Electronics Corporation

1-1773459-7 — 2.5M — ADM/FP — 10/10  
TE (Logo) and Tyco Electronics are trademarks.

 **Tyco Electronics**  
Our commitment. Your advantage.

## X-ON Electronics

Largest Supplier of Electrical and Electronic Components

*Click to view similar products for [Crimpers / Crimping Tools](#) category:*

*Click to view products by [TE Connectivity](#) manufacturer:*

Other Similar products are found below :

[010-0096](#) [M225201-06](#) [M225202-37](#) [6-1579015-5](#) [CT150-6-RH07](#) [622-6441LF](#) [M322](#) [6-304052-1](#) [63456-0054](#) [63484-3701](#) [63800-8355](#)  
[63819-1875](#) [63819-2875](#) [63819-4475](#) [63823-3475](#) [63827-5375](#) [64001-0975](#) [64001-4175](#) [64005-0175](#) [662903-2](#) [690602-6](#) [7-1579001-9](#) [7-](#)  
[23471-1](#) [762637-1](#) [808714-1](#) [811242-5](#) [999-50-020083](#) [1-21002-3](#) [1-21002-7](#) [12085270](#) [1-21002-6](#) [1-21113-6](#) [1-22548-4](#) [125442-1](#)  
[DCE.91.073.BVC](#) [DCE.91.090.3MVM](#) [DCE.91.130.5MVU](#) [DCE.91.202.BVCM](#) [1338300-1](#) [1-354003-0](#) [1338301-1](#) [DF62/RE-MD](#) [142321](#)  
[1456088-1](#) [1490794-1](#) [1-45804-6](#) [1490357-2](#) [1490357-3](#) [AX100749](#) [1-59619-7](#)