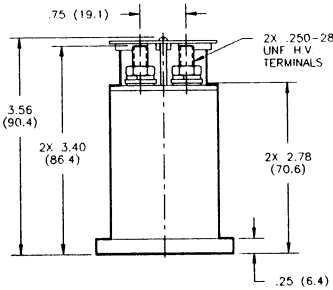
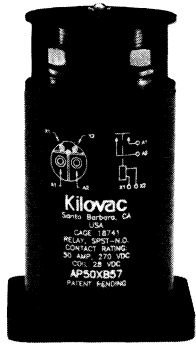


KILOVAC AP50X – 50 Amps

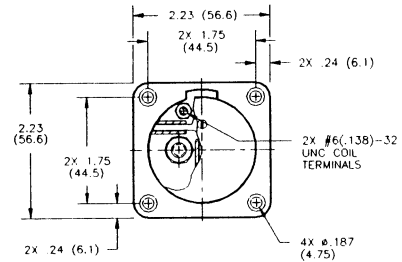
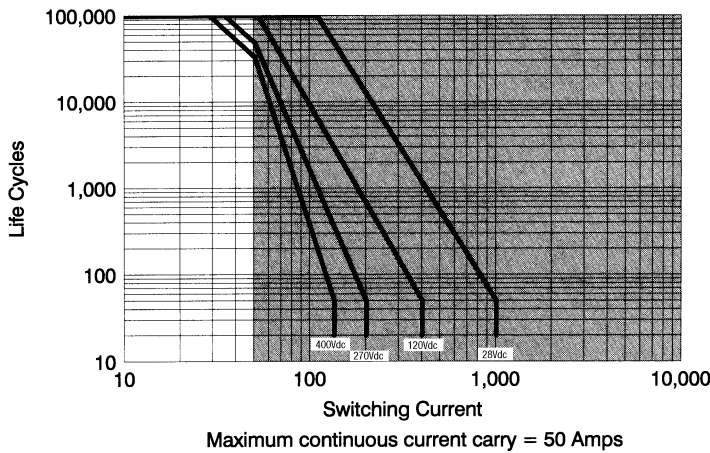


Note: Dimensions are expressed as inches (mm).

Features:

- 50 A carry, 200A overload @ 270 Vdc
- Smallest, lightest DC contactor
- Ideal for circuit protection and control
- Versatile power, voltage, and current operating range
- Bi-directional power switching
- Fast operate and release time
- Low power consumption
- Vacuum-sealed contacts; can operate in harsh environments
- Qualified to SAE ARD 50031 270 Vdc General Relay Spec.
- Space-rated version built in accordance with customers SCD.

CONTACT RATINGS*



* Based on data extrapolated from qualification at 270 Vdc with resistive load. Since each application is unique, user is encouraged to verify rating in actual application

PRODUCT SPECIFICATIONS

Part Number	UNIT	AP50X
Contact Arrangement		SPST-NO
Contact Form		X
Rated Resistive Load @ 270 Vdc	A	50
Continuous Current Carry, Max.		50
Overload @ 270 Vdc		200
Contact Resistance, Max.	mohm	4
Dielectric at Sea Level		
Coil to Power Terminals	Vrms	1,800
All Other Points		2,000
Shock, 11ms 1/2 Sine (peak)	g	30
Vibration, Sinusoidal (55-2000 Hz, peak)		20
Operating Ambient Temperature Range	° C	-55 to +85
Load Life, @ 270 Vdc, Min.	cycles	50,000
Operate Time, Excluding Bounce, Max.	ms	27
Release Time, Max.		10
Bounce Time, Max.		8
Insulation Resistance @ 500 Vdc, Min.		
Initial	Mohm	100
End of Life		50
Weight, Nominal	gram (oz)	454 (16)

COIL DATA

Volts, Nominal	12	28	120	Unit
Pickup, Max.	9.9	23	99	Vdc
Dropout, Min.	.4	1.0	4.0	
Coil Resistance (±10%)	19	103	1890	Ohms
Energy, Magnetic, Max.	.05	.05	.05	J

Coil resistance rated at 25°C

PART NUMBER SELECTION

Sample Part No. **AP50** X B 5 7
 Contact Form _____
 X = SPST-NO Double Make
 Coil Voltage _____
 A = 12Vdc, Stud Terminals
 B = 28Vdc, Stud Terminals
 C = 120Vdc, Stud Terminals
 Power Terminals _____
 5 = Stud Terminals
 Mounting _____
 7 = Panel Mount

X-ON Electronics

Largest Supplier of Electrical and Electronic Components

Click to view similar products for [General Purpose Relays](#) category:

Click to view products by [TE Connectivity](#) manufacturer:

Other Similar products are found below :

[PCN-105D3MH,000](#) [59641F200](#) [5JO-1000CD-SIL](#) [5X827E](#) [5X837F](#) [5X840F](#) [5X842F](#) [5X848E](#) [LY2N-AC120](#) [LY2-US-AC120](#) [LY2-US-DC24](#) [LY3-US-AC120](#) [LY4F-UA-DC12](#) [LY4F-UA-DC24](#) [LY4F-US-AC120](#) [LY4F-US-AC240](#) [LY4F-US-DC24](#) [LY4F-VD-AC110](#)
[M115C60](#) [M115N010](#) [M115N0150](#) [603-12D](#) [60HE1-5DC](#) [60HE2S-12DC](#) [61211T0B4](#) [61212T400](#) [61222Q400](#) [61243B600](#) [61243C500](#)
[61243Q400](#) [61311BOA2](#) [61311BOA6](#) [61311BOA8](#) [61311C0A2](#) [61311COA1](#) [61311COA6](#) [61311F0A2](#) [61311QOA1](#) [61311QOA4](#)
[61311T0D6](#) [61311TOA6](#) [61311TOA7](#) [61311TOB3](#) [61311TOB4](#) [61311U0A6](#) [61312Q600](#) [61312T400](#) [61312T600](#) [61313U200](#) [61313U400](#)