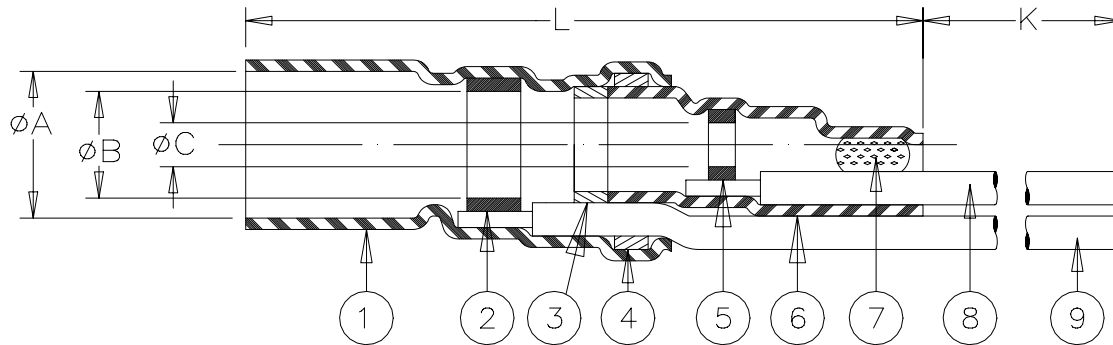


SPECIFICATION CONTROL DRAWING



PART NAME	PRODUCT REVISION	PRODUCT DIMENSIONS					"GA" = WIRE GAUGE (AWG)
		A min	B min	C min	L max	K min	
B-043-24-N	D						24
B-043-26-N	D	3.4	2.3	0.8	28	150	26
B-043-28-N	D	(0.135)	(0.090)	(0.030)	(1.100)	(5.900)	28
B-043-30-N	D						30

CABLE DIMENSIONS				
D	E	F min	(G±0.02)	(M±0.02)
1.7 (0.065) TO 3.4 (0.135)	1.3 (0.050) TO 2.3 (0.090)	0.3 (0.012)	16 (0.630)	6 (0.235)

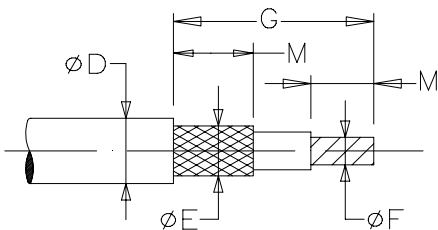
MATERIAL

1. & 6. INSULATION SLEEVE: Heat-shrinkable, radiation cross-linked modified polyvinylidene fluoride. Transparent blue.
2. & 5. SOLDER PREFORMS WITH FLUX:
 SOLDER: TYPE Sn63 per ANSI J-STD-006.
 FLUX: TYPE ROL1 per ANSI J-STD-004.
- 3., 4. & 7. MELTABLE RINGS: Thermally stabilized thermoplastic.
8. CONDUCTOR LEAD: AWG GA (see table). MIL-W-81822/13-GA-9. ETFE insulated silver plated solid conductor.
 Color: white.
9. GROUND LEAD: MIL-W-81822/13-GA-G. ETFE insulated, silverplated, solid conductor. Color: blue. GA= Gauge per table.

APPLICATION

- A. The parts covered by this SCD are for use in terminating the primary conductor and the braided shield of a coaxial cable having tin or silverplated conductor and shield, rated for at least 125° C and meeting the dimensional requirements listed.
- B. Parts will meet the requirements of Raychem specification RT-1404 when installed per Raychem RPIP-500-03.

For best results, prepare the cable as shown:



tyco Electronics		Tyco Electronics Corporation 305 Constitution Drive Menlo Park, CA 94025, USA		Raychem Products		COAXIAL SOLDERSLLEEVE* DEVICE WITH PRE-INSTALLED LEAD SOLID WIRES			
UNLESS OTHERWISE SPECIFIED DIMENSIONS ARE IN MILLIMETERS. INCHES DIMENSIONS ARE IN BETWEEN BRACKETS.						DOCUMENT NO: B-043-GA-N			
TOLERANCES: 0.00 N/A 0.0 N/A 0 N/A		ANGLES: N/A ROUGHNESS IN MICRON		Tyco Electronics reserves the right to amend this drawing at any time. Users should evaluate the suitability of the product for their application.		DATE: Nov. 23, 1998	DOC ISSUE: 3		
DRAWN BY: R. MAPALO		REPLACES: B021XYN		DCR NUMBER: D981934		PROD. REV. SEE TABLE	SCALE: NONE	SIZE: A	SHEET: 1 of 1

If this document is printed it becomes uncontrolled. Check for the latest revision

X-ON Electronics

Largest Supplier of Electrical and Electronic Components

Click to view similar products for [Solder & Shield Tubing](#) category:

Click to view products by [TE Connectivity](#) manufacturer:

Other Similar products are found below :

[CTA-0027](#) [CTC-0062-20-9/5-9](#) [CTC-0062-22-9/5-9](#) [650076N001](#) [680441-000](#) [D-150-0331CS2902](#) [D-181-1222-90/9CS2800](#) [D-300-01CS1108](#) [982127-1](#) [D-436-0127CS391](#) [D-436-0182CS246](#) [D-436-37CS2651](#) [D-436-58CS246](#) [D-436-61CS246](#) [D-436-82-CS2621](#) [D-659-0087](#) [D-750-0005CS2493](#) [E53797N001](#) [S200-2-01](#) [S200-4-00CS2904](#) [LSS-81-16AA-CS5575](#) [SO63-2-9036-22CS2677](#) [SO63-3-01CS293](#) [SO63-3-9036-20CS2677](#) [SO63-3-9036-22CS2677](#) [SO63-4-9036-20CS2677](#) [SO63-5-9036-22CS2677](#) [CC1525-000](#) [CTA-0025](#) [CTA-0025CS072](#) [D-108-01CS227](#) [D-108-07CS436](#) [D-128-0010](#) [D-141-0108CS404](#) [D-142-51-202-7754](#) [D-144-41CS1371](#) [D-150-0231-NRCS2896](#) [B-801-18-01](#) [B-801-58](#) [515-9](#) [C67137-000](#) [D-436-36CS2908](#) [D-436-37CS2908](#) [D-436-52CS246](#) [D-436-83CS2705](#) [D-438-0102](#) [LSS-26-8A](#) [427243-000](#) [D-106-2012](#) [D-300-08CS1108](#)