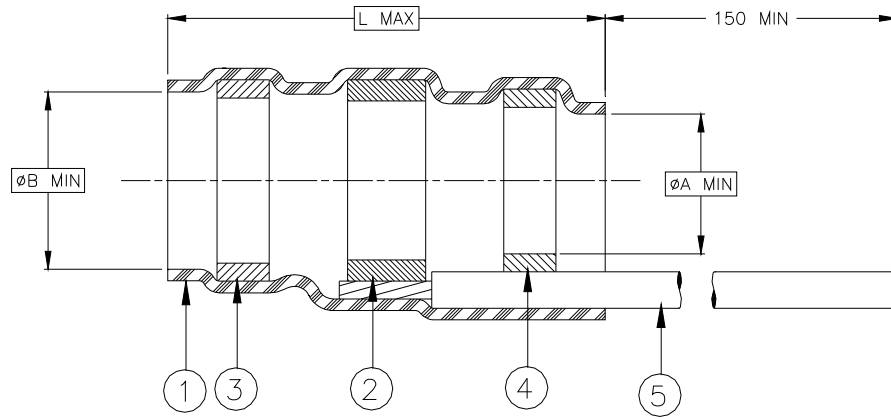


CUSTOMER DRAWING



Part Name	Component Dimensions			Cable Dimensions				
	A min	B min	L max	D max	E min	F min	G max	J±0.5 (J±.020)
B-151-05	4.3 (.169)	4.8 (.189)	29.3 (1.154)	4.8 (.189)	2.0 (.079)	1.5 (.059)	4.3 (.169)	9.0 (.354)
B-151-07	6.4 (.250)	7.3 (.290)	32.5 (1.280)	7.3 (.290)	3.3 (.130)	2.8 (.110)	6.4 (.250)	11.0 (.435)
B-151-11	10.0 (.395)	11.5 (.450)	35.5 (1.395)	11.5 (.450)	4.5 (.175)	4.0 (.155)	10.0 (.395)	13.0 (.510)
B-151-13	13.0 (.510)	15.1 (.595)	45.5 (1.790)	15.1 (.595)	7.0 (.275)	6.5 (.255)	13.0 (.510)	17.0 (.670)
B-151-17	16.5 (.650)	19.0 (.750)	55.0 (2.165)	18.0 (.710)	9.0 (.355)	8.0 (.315)	16.0 (.630)	23.0 (.905)

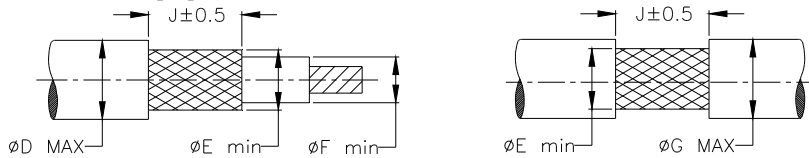
MATERIAL


- INSULATION SLEEVE: Radiation cross-linked modified polyolefin. Transparent clear.
- SOLDER PREFORM WITH FLUX:
SOLDER: TYPE Cd18 per ANSI J-STD-006.
FLUX: TYPE ROM1 per ANSI J-STD-004.
- & 4. MELTABLE SEALING RINGS: Thermally stabilized thermoplastic.
- GROUND LEAD: RAYCHEM 100G0111-1.00-9, stranded tin plated copper. Color: white.

APPLICATION

- These controlled soldering devices are designed for termination of a bare or tin plated copper shield on a cable having an insulation rated for at least 85°C.
- Temperature range: -55°C to +125°C.
- For installation procedure and application equipment consult RPIP-688-01.

For best results, prepare the cable as shown:



		TE Connectivity 300 Constitution Dr Menlo Park, CA 94025, U.S.A.	TITLE: SOLDERSLEEVE LOW-FIRE-HAZARD WITH PRE-INSTALLED LEAD.		
Unless otherwise specified dimensions are in millimeters. [Inches dimensions are shown in brackets]		Raychem Devices	DOCUMENT NO.: B-151-XX		
TOLERANCES: 0.00 N/A 0.0 N/A 0 N/A	ANGLES: N/A ROUGHNESS IN MICRON	TE Connectivity reserves the right to amend this drawing at any time. Users should evaluate the suitability of the product for their application.		REV: E1	DATE: 15-Apr-11
REVISED BY: HMR	CAGE CODE: 06090	ECO NUMBER: ECO-11-005139	SCALE: NTS	SIZE: A	SHEET: 1 of 1

X-ON Electronics

Largest Supplier of Electrical and Electronic Components

Click to view similar products for [Solder & Shield Tubing](#) category:

Click to view products by [TE Connectivity](#) manufacturer:

Other Similar products are found below :

[CTC-0062-20-9/5-9](#) [CTC-0062-22-9/5-9](#) [650076N001](#) [680441-000](#) [D-150-0331CS2902](#) [D-181-1222-90/9CS2800](#) [D-300-01CS1108](#) [982127-1](#) [D-436-0127CS391](#) [D-436-0182CS246](#) [D-436-37CS2651](#) [D-436-58CS246](#) [D-436-61CS246](#) [D-436-82-CS2621](#) [D-659-0087](#) [D-750-0005CS2493](#) [E53797N001](#) [S200-2-01](#) [S200-4-00CS2904](#) [LSS-81-16AA-CS5575](#) [SO63-2-9036-22CS2677](#) [SO63-3-01CS293](#) [SO63-3-9036-20CS2677](#) [SO63-3-9036-22CS2677](#) [SO63-4-9036-20CS2677](#) [SO63-5-9036-22CS2677](#) [CC1525-000](#) [CTA-0025](#) [CTA-0025CS072](#) [D-108-01CS227](#) [D-108-07CS436](#) [D-128-0010](#) [D-141-0108CS404](#) [D-142-51-202-7754](#) [D-144-41CS1371](#) [D-150-0231-NRCS2896](#) [B-801-18-01](#) [B-801-58](#) [515-9](#) [D-436-36CS2908](#) [D-436-37CS2908](#) [D-436-52CS246](#) [D-436-83CS2705](#) [D-438-0102](#) [LSS-26-8A](#) [427243-000](#) [D-106-2012](#) [D-300-08CS1108](#) [UWCS-2U/7.6-1C/5.8](#) [620026-000](#)