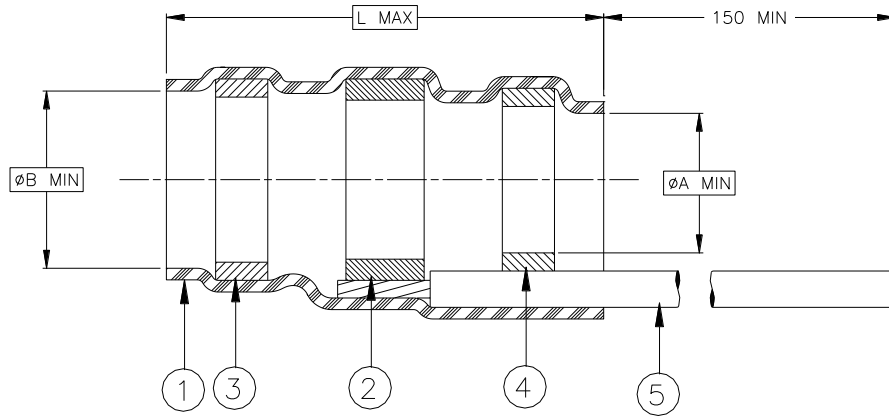


CUSTOMER DRAWING



Part Name	Component Dimensions			Cable Dimensions				
	A min	B min	L max	D max	E min	F min	G max	J±0.5 (J±.020)
B-151-05	4.3 (.169)	4.8 (.189)	29.3 (1.154)	4.8 (.189)	2.0 (.079)	1.5 (.059)	4.3 (.169)	9.0 (.354)
B-151-07	6.4 (.250)	7.3 (.290)	32.5 (1.280)	7.3 (.290)	3.3 (.130)	2.8 (.110)	6.4 (.250)	11.0 (.435)
B-151-11	10.0 (.395)	11.5 (.450)	35.5 (1.395)	11.5 (.450)	4.5 (.175)	4.0 (.155)	10.0 (.395)	13.0 (.510)
B-151-13	13.0 (.510)	15.1 (.595)	45.5 (1.790)	15.1 (.595)	7.0 (.275)	6.5 (.255)	13.0 (.510)	17.0 (.670)
B-151-17	16.5 (.650)	19.0 (.750)	55.0 (2.165)	18.0 (.710)	9.0 (.355)	8.0 (.315)	16.0 (.630)	23.0 (.905)

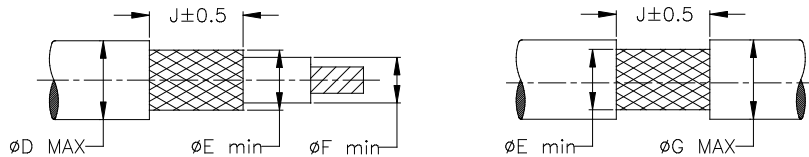
MATERIAL

- INSULATION SLEEVE: Radiation cross-linked modified polyolefin. Transparent clear.
- SOLDER PREFORM WITH FLUX:
SOLDER: TYPE Cd18 per ANSI J-STD-006.
FLUX: TYPE ROM1 per ANSI J-STD-004.
- & 4. MELTABLE SEALING RINGS: Thermally stabilized thermoplastic.
- GROUND LEAD: RAYCHEM 100G0111-1.00-9, stranded tin plated copper. Color: white.

APPLICATION

- These controlled soldering devices are designed for termination of a bare or tin plated copper shield on a cable having an insulation rated for at least 85°C.
- Temperature range: -55°C to +125°C.
- For installation procedure and application equipment consult RPIP-688-01.

For best results, prepare the cable as shown:



TE Connectivity, TE connectivity (logo), Raychem, and SolderSleeve are trademarks

		Raychem Devices	TITLE: SOLDERSLEEVE LOW-FIRE-HAZARD WITH PRE-INSTALLED LEAD.			
Unless otherwise specified dimensions are in millimeters. [Inches dimensions are shown in brackets]			DOCUMENT NO.: B-151-XX			
TOLERANCES: 0.00 N/A 0.0 N/A 0 N/A	ANGLES: N/A ROUGHNESS IN MICRON	TE Connectivity reserves the right to amend this drawing at any time. Users should evaluate the suitability of the product for their application.	Revision : F		Issue Date : April 2020	
REVISED BY: HMR	CAGE CODE: 06090	DATE: 15-Apr-11	ECO: ECO-20-004959	SCALE: NTS	SIZE: A	SHEET: 1 of 1

X-ON Electronics

Largest Supplier of Electrical and Electronic Components

Click to view similar products for [Solder Sleeves & Shield Tubing](#) category:

Click to view products by [TE Connectivity](#) manufacturer:

Other Similar products are found below :

[899170-000](#) [620040N001](#) [620069N003](#) [CTA-0050-01](#) [629624-000](#) [6500750004](#) [6501390002](#) [CX0781-000](#) [696396-000](#) [697080-000](#) [D-150-0331CS2902](#) [D-181-1222-90/9CS2800](#) [D-300-01CS1108](#) [715325N001](#) [908357N001](#) [982127-1](#) [D-436-0182CS246](#) [D-436-37CS2651](#) [D-436-61CS246](#) [D-436-82-CS2621](#) [D-659-0087](#) [E53797N001](#) [CB0213-000](#) [CB0219-000](#) [S200-2-01](#) [S200-4-00CS2904](#) [LSS-81-16AA-CS5575](#) [ST18-2-00](#) [FLX40-020-04-CS8651](#) [325534-000](#) [CTA-0025](#) [D-108-07CS436](#) [D-128-0010](#) [D-141-0108CS404](#) [D-144-41CS1371](#) [D-150-0231-NRCS2896](#) [D-150-1011](#) [395947-000](#) [427243N001](#) [B-801-18-01](#) [515-9](#) [C67137-000](#) [CB0220-000](#) [D-436-0185CS1102](#) [D-436-36CS2908](#) [D-436-37CS2908](#) [D-436-52CS246](#) [D44133N001](#) [LSS-26-8A](#) [626168-000](#)