

4

3

2

1

10.3 [262] REF.

1.8 [45] REF.

REVISIONS		
LTR	DESCRIPTION	DATE
B	ECD-07-008345	04/10/2007

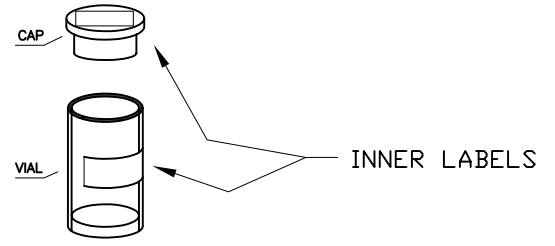
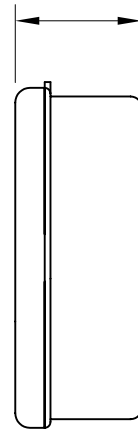
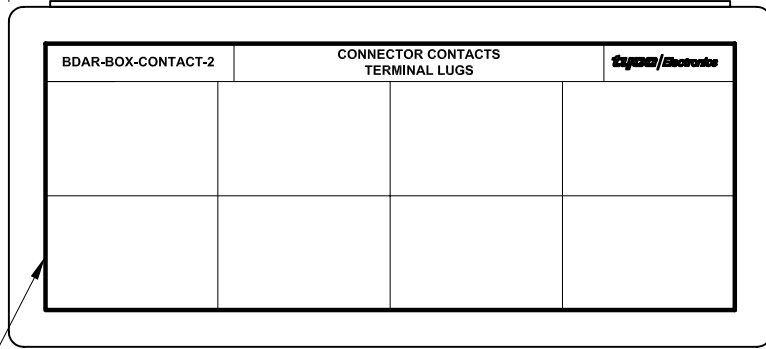
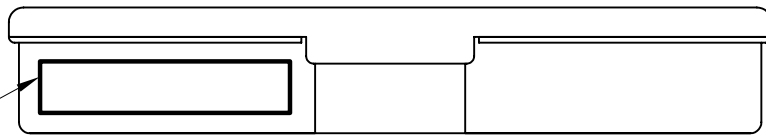
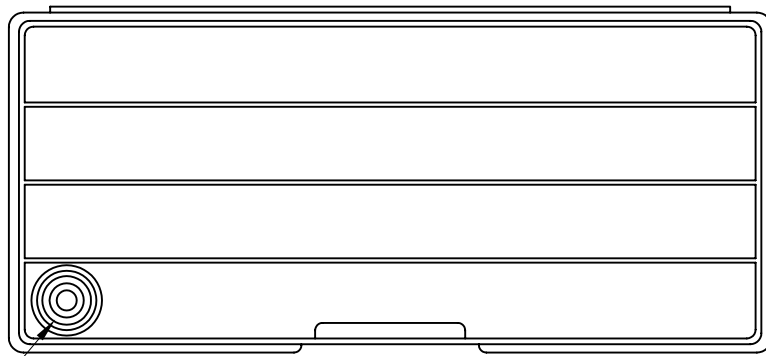


FIGURE 1: VIAL KIT



OUTER LABELS



4.6 [117] REF.

ROUND VIAL AND CAP (SEE FIGURE 1: VIAL KIT )

NOTES:

1. EACH LINE ITEM SHALL BE PACKAGED AND LABELED IN INDIVIDUAL VIAL KIT.
2. SEE PAGE 2 FOR COMPONENTS' NSN, PART NUMBERS AND DESCRIPTIONS.

CUSTOMER DRAWING

UNLESS OTHERWISE SPECIFIED DIMENSIONS ARE INCHES. METRIC DIMENSIONS ARE IN BRACKETS. DECIMAL TOLERANCES .XXX ± 0.005 [0.13 mm] .XX ± 0.01 [0.25 mm] .X ± 0.1 [0.50 mm] ANGLE TOLERANCE .X ± 1 DEG.	DRAWN UNGUYEN	DATE 04/10/2007	Tyco Electronics Corporation 300 Constitution Drive Menlo Park, CA, USA 94025 
	RPN C92345-000		
THIRD ANGLE PROJECTION			SIZE B CODE IDENT. NO. 06090 DWG. NO. MK-0020-102-CONTACT2
DO NOT SCALE THIS DRAWING			SHEET 1 OF 2

4

3

2

1

4

3

2

1

TABLE 1: COMPONENTS

ITEM	CUSTOMER PART NUMBER	NSN	DESCRIPTION	QTY
1	M39029/56-352	5999-01-034-0716	CONNECTOR CONTACT	10
2	M39029/56-353	5999-00-378-0206	CONNECTOR CONTACT	10
3	M39029/57-354	5999-00-478-4402	CONNECTOR CONTACT	25
4	M39029/57-357	5999-01-158-1562	CONNECTOR CONTACT	15
5	M39029/57-358	5999-00-197-3621	CONNECTOR CONTACT	10
6	M39029/57-359	5999-00-402-2539	CONNECTOR CONTACT	10
7	M39029/58-360	5999-00-473-3551	CONNECTOR CONTACT	50
8	M39029/58-363	5999-00-243-6500	CONNECTOR CONTACT	10
9	M39029/58-364	5999-00-402-2545	CONNECTOR CONTACT	15
10	M39029/58-365	5999-01-123-7941	CONNECTOR CONTACT	10
11	M39029/63-368	5999-00-239-3338	CONNECTOR CONTACT	25
12	M39029/64-369	5999-00-411-7645	CONNECTOR CONTACT	25
13	M7928-1-7	5940-00-113-9827	INSULATED TERMINAL	10
14	M7928-1-8	5940-00-577-3807	INSULATED TERMINAL	10
15	M7928-1-9	5940-00-804-0365	INSULATED TERMINAL	10
16	M7928/1-10	5940-01-108-3760	INSULATED TERMINAL	10
17	M7928/1-12	5940-00-191-2707	INSULATED TERMINAL	10
18	M7928-1-14	5940-01-498-8116	INSULATED TERMINAL	10
19	M7928/1-15	5940-00-191-2714	INSULATED TERMINAL	10
20	M7928/1-16	5940-01-113-8184	INSULATED TERMINAL	10

TABLE 2: COMPONENTS (CON'T)

ITEM	CUSTOMER PART NUMBER	NSN	DESCRIPTION	QTY
21	M7928-1-21	5940-00-813-0698	INSULATED TERMINAL	10
22	M7928-1-23	5940-00-557-1629	INSULATED TERMINAL	10
23	M7928/1-24	5940-00-241-9677	INSULATED TERMINAL	10
24	M7928-1-25	5940-00-230-0515	INSULATED TERMINAL	10
25	M7928-1-30	5940-01-085-9905	INSULATED TERMINAL	10
26	M7928-1-32	5940-00-241-9695	INSULATED TERMINAL	10
27	M7928/1-33	5940-00-241-9696	INSULATED TERMINAL	10
28	M7928/1-34	5940-01-025-1269	INSULATED TERMINAL	10
29	M7928-1-39	5940-00-283-5280	INSULATED TERMINAL	10
30	M7928-1-41	5940-00-143-4774	INSULATED TERMINAL	10
31	M7928/1-42	5940-00-257-1268	INSULATED TERMINAL	10
32	M7928/1-43	5940-00-230-0515	INSULATED TERMINAL	10
33	M7928-1-48	5940-00-283-5280	INSULATED TERMINAL	10
34	M7928-1-50	5940-00-143-4774	INSULATED TERMINAL	10
35	M7928/1-51	5940-00-143-4780	INSULATED TERMINAL	10
36	AS7928/1-52	5940-00-349-9282	INSULATED TERMINAL	7
37	M7928-1-56	5940-00-204-8990	INSULATED TERMINAL	8
38	M7928-1-57	5940-00-349-9283	INSULATED TERMINAL	8
39	M7928/1-58	5940-01-358-0290	INSULATED TERMINAL	8
40	M7928-1-59	5940-01-014-7126	TERMINAL LUG	7

CUSTOMER DRAWING

SIZE B	DWG. NO. 06090	REV B	DWG. NO. MK-0020-102-CONTACT2
DO NOT SCALE THIS DRAWING			SHEET 2 OF 2

© 2005-2007 Tyco Electronics Corporation. All rights reserved.

4

3

2

1

## X-ON Electronics

Largest Supplier of Electrical and Electronic Components

*Click to view similar products for [TE Connectivity](#) manufacturer:*

Other Similar products are found below :

[D38999/24FJ4AN](#) [570416-000](#) [CLTEQ-M81CE-SSRELAY-4-20V](#) [4-1195131-0](#) [650069-000](#) [SMD100-2](#) [358838-000](#) [CB-1022B-78](#)  
[RM707012](#) [RP410012](#) [MMS42](#) [1-640426-8](#) [2EDL4CM](#) [DTS20W19-11PD-3028-LC](#) [RM202615](#) [NC6-P104-06](#) [MSPS103B](#) [DTS26F21-](#)  
[41HE-LC](#) [DTS26F21-41AE](#) [DTS26F21-41PE-LC](#) [DTS26F21-11SE-3028-LC](#) [30DCB6](#) [1932144-1](#) [293545-4](#) [LVR125S](#) [MS27466T25F4PB](#)  
[CKB-38-78010](#) [TR04AI-TINELLOCKRING](#) [1206SFF150F/63-2](#) [D38999/20JB35HA](#) [TE1500A2R2J](#) [D38999/20WC8BB](#) [DTS24F19-11SC-](#)  
[3028-LC](#) [D38999/24WG11HA](#) [D38999/24WG11HN](#) [MS27467T21F11H](#) [DJT16E21-11HA](#) [MS27467T21F35J](#) [MS27467T21F11J](#)  
[MS27467T21F16H-LC](#) [MS27467T21F35H](#) [MS27467T21F41H-LC](#) [1206SFH150F/24-2](#) [RP330024](#) [DJT16E21-11PA-LC](#) [DJT16E21-11HA-](#)  
[LC](#) [DJT16E21-11AA](#) [MS27467T21B11JA](#) [DJT16E21-11JA](#) [MS27467T21B11JA-LC](#)