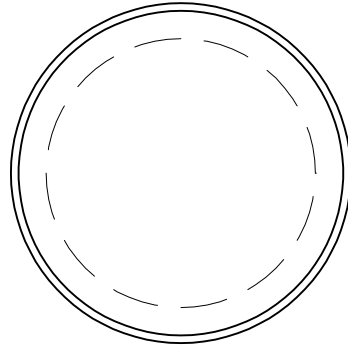
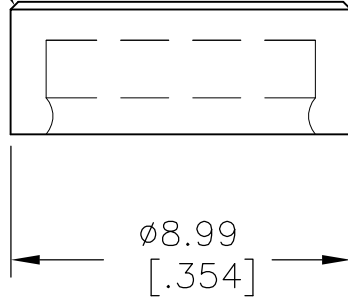


LOC	DIST	REVISIONS					
—	—	P	LTR	DESCRIPTION	DATE	DWN	APVD
			A	ECO-09-022134	01OCT09	HMR	MW



.008 X 45°
CHAMFER



WHITE	C99	7-1437627-4
RED	C92	7-1437627-2
BLACK	C90	7-1437627-1
COLOR	ALCO PART NO	PART NO

THIS DRAWING IS UNPUBLISHED.

RELEASED FOR PUBLICATION
ALL INTERNATIONAL RIGHTS RESERVED.

BY TYCO ELECTRONICS CORPORATION.

© COPYRIGHT

DIMENSIONS: mm [INCHES]	DWN	RAGHAVENDRA	01OCT09	MATERIAL	ABS PLASTIC	FINISH	—	
	CHK	M WILBOURN	01OCT09	Tyco Electronics Corporation Harrisburg, PA 17105-3608				
TOLERANCES UNLESS OTHERWISE SPECIFIED:	APVD	M WILBOURN	01OCT09					NAME
0 PLC ± -	PRODUCT SPEC	—						
1 PLC ± -	APPLICATION SPEC	—						
2 PLC ± -	WEIGHT	—						
3 PLC ± -	SIZE			CAGE CODE	DRAWING NO	RESTRICTED TO		
4 PLC ± -	A4			00779	C-7-1437627-1	—		
ANGLES ± -	CUSTOMER DRAWING			SCALE	5:1	SHEET	1 OF 1	
			REV					A

X-ON Electronics

Largest Supplier of Electrical and Electronic Components

Click to view similar products for [Switch Bezels / Switch Caps](#) category:

Click to view products by [TE Connectivity](#) manufacturer:

Other Similar products are found below :

[896809000](#) [LW1A-B2-R](#) [LW2A-B1-G](#) [704.604.4](#) [704.955.3](#) [F1403](#) [7527](#) [760203000](#) [760503000](#) [766601000](#) [785105000](#) [785106000](#)
[79211759](#) [MG12KB](#) [MH11](#) [MH13](#) [MHU31](#) [MJ1216](#) [MJ1226](#) [MJ33](#) [MJ612](#) [MJ626](#) [MJ627](#) [9001T8BK](#) [908-1634](#) [92-343.200](#) [92-343.400](#)
[95804.920](#) [95CAP-011](#) [95CAP-112](#) [11-932.7](#) [99-901.9](#) [99-902.9](#) [99-909.4](#) [99-909.5](#) [99-920.8](#) [A0261A](#) [11-931.2](#) [11-932.5](#) [11-936](#)
[AKTSC22B](#) [AT496H](#) [AW-RF8](#) [161006](#) [1825068-6](#) [184-1872](#) [187-1872](#) [188-1471](#) [1DFBLK](#) [1D-GRY](#)