

NOTES

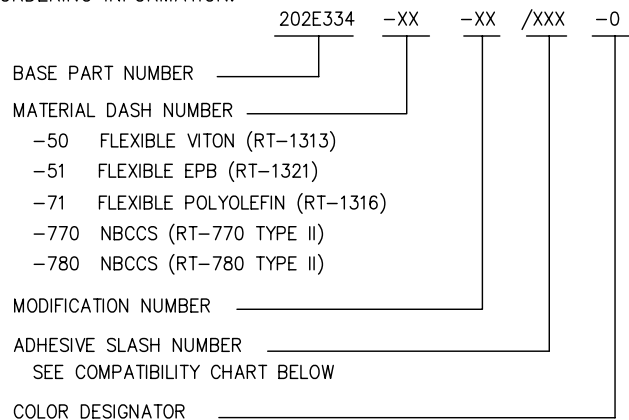
1. ALL DIMENSIONS ARE IN $\frac{\text{INCHES}}{[\text{MILLIMETERS}]}$

2. DIMENSIONS APPEARING IN TABLE ARE AS FOLLOWS:

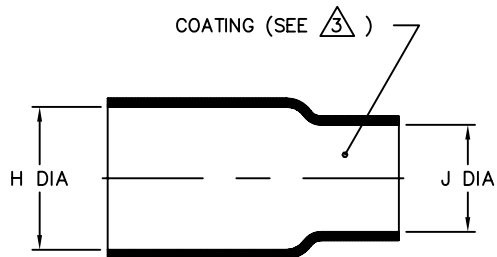
- a - AS SUPPLIED
- b - AFTER UNRESTRICTED RECOVERY

3 COATING (ADHESIVE): IS OPTIONAL AS SUPPLIED DIMENSIONS APPEARING IN TABLE ARE FOR UNCOATED PARTS. WHEN COATING IS ADDED, ENTRY DIAMETER WILL BE REDUCED BY .06 MAX.

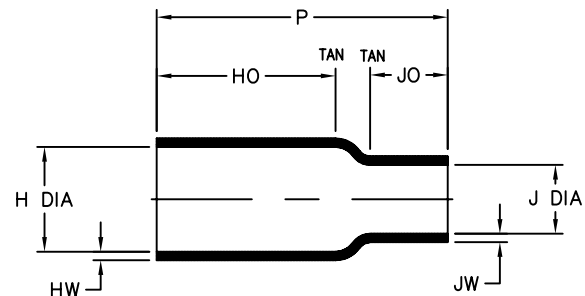
4. ORDERING INFORMATION:



| REVISIONS | | |
|-----------|---------------|------------|
| LTR | DESCRIPTION | DATE |
| T | ECO-09-016592 | 07/15/2009 |



AS SUPPLIED



AFTER UNRESTRICTED RECOVERY

| PART DESCRIPTION | H | | J | | P ±10% b | HO ±10% b | JO ±10% b | HW ±25% b | JW ±25% b |
|------------------|---------------|---------------|---------------|--------------|----------------|-----------------|-----------------|-----------------|-----------------|
| | MIN | MAX | MIN | MAX | | | | | |
| | a | b | a | b | | | | | |
| 202E334 | .50 [12,7] | .42 [10,7] | .44 [11,2] | .11 [2,8] | 2.50 [63,5] | 1.62 [41,1] | .62 [15,7] | .06 [1,52] | .06 [1,52] |
| 202E336 | .82 [20,8] | .42 [10,7] | .81 [20,6] | .21 [5,3] | 2.50 [63,5] | 1.62 [41,1] | .65 [16,5] | .06 [1,52] | .06 [1,52] |
| 202E344 | .87 [22,1] | .74 [18,8] | .44 [11,2] | .10 [2,5] | 2.10 [53,3] | 1.10 [27,9] | .62 [15,7] | .09 [2,29] | .06 [1,52] |
| 202E346 | .87 [22,1] | .74 [18,8] | .81 [20,6] | .31 [7,9] | 2.10 [53,3] | 1.10 [27,9] | .55 [14,0] | .09 [2,29] | .06 [1,52] |

COMPATIBILITY CHART

| MATERIAL DASH NO. | ADHESIVE (COATING) SLASH NO. | ADHESIVE (COATING) S NO. |
|-------------------|------------------------------|--------------------------|
| -50 | N/A | N/A |
| -51 | /86; /164; /180 | S-1048; S-1124; S-1030 |
| -71 | /42; /86; /180 | S-1017; S-1048; S-1030 |
| -770 | N/A | N/A |
| -780 | N/A | N/A |

UNLESS OTHERWISE SPECIFIED DIMENSIONS ARE INCHES. METRIC DIMENSIONS ARE IN BRACKETS.

DECIMAL TOLERANCES

| | |
|--------------|-----------|
| .XXX ± 0.005 | [0.13 mm] |
| .XX ± 0.01 | [0.25 mm] |
| .X ± 0.1 | [0.50 mm] |

ANGLE TOLERANCE

.X ± 1 DEG.

TYCO ELECTRONICS RESERVES THE RIGHT TO AMEND THIS DRAWING AT ANY TIME. USERS SHOULD EVALUATE THE SUITABILITY OF THE PRODUCT FOR THEIR APPLICATION.

© 2008-2009 Tyco Electronics Corporation. All rights reserved.

DRAWN
YUNGUYEN

APPROVED
STRAN

THIRD ANGLE PROJECTION



Raychem Molded Parts
305 Constitution Dr
Menlo Park, CA 94025

TITLE
BOOT, STRAIGHT

SIZE **B** CODE IDENT. NO. **06090** DWG. NO. **202E334thru346**

CUSTOMER DRAWING

DO NOT SCALE THIS DRAWING SHEET 1 OF 1

X-ON Electronics

Largest Supplier of Electrical and Electronic Components

Click to view similar products for [TE Connectivity](#) manufacturer:

Other Similar products are found below :

[D38999/24FJ4AN](#) [570416-000](#) [CLTEQ-M81CE-SSRELAY-4-20V](#) [4-1195131-0](#) [650069-000](#) [SMD100-2](#) [358838-000](#) [CB-1022B-78](#)
[RM707012](#) [RP410012](#) [MMS42](#) [1-640426-8](#) [2EDL4CM](#) [DTS20W19-11PD-3028-LC](#) [RM202615](#) [NC6-P104-06](#) [MSPS103B](#) [DTS26F21-](#)
[41HE-LC](#) [DTS26F21-41AE](#) [DTS26F21-41PE-LC](#) [DTS26F21-11SE-3028-LC](#) [30DCB6](#) [1932144-1](#) [293545-4](#) [LVR125S](#) [MS27466T25F4PB](#)
[CKB-38-78010](#) [TR04AI-TINELLOCKRING](#) [1206SFF150F/63-2](#) [D38999/20JB35HA](#) [TE1500A2R2J](#) [D38999/20WC8BB](#) [DTS24F19-11SC-](#)
[3028-LC](#) [D38999/24WG11HA](#) [D38999/24WG11HN](#) [MS27467T21F11H](#) [DJT16E21-11HA](#) [MS27467T21F35J](#) [MS27467T21F11J](#)
[MS27467T21F16H-LC](#) [MS27467T21F35H](#) [MS27467T21F41H-LC](#) [1206SFH150F/24-2](#) [RP330024](#) [DJT16E21-11PA-LC](#) [DJT16E21-11HA-](#)
[LC](#) [DJT16E21-11AA](#) [MS27467T21B11JA](#) [DJT16E21-11JA](#) [MS27467T21B11JA-LC](#)