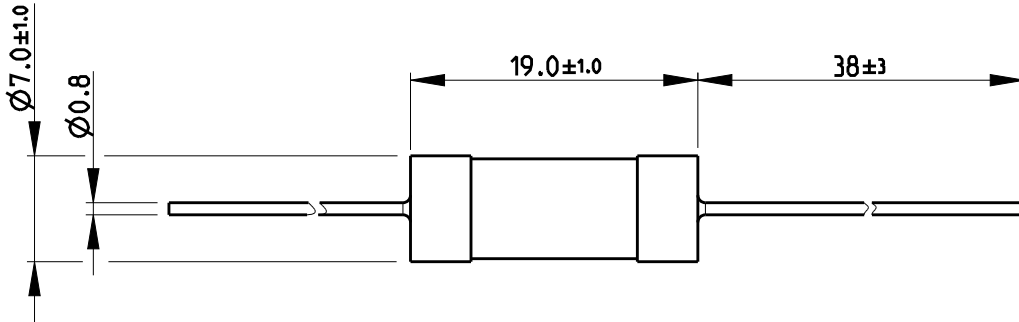


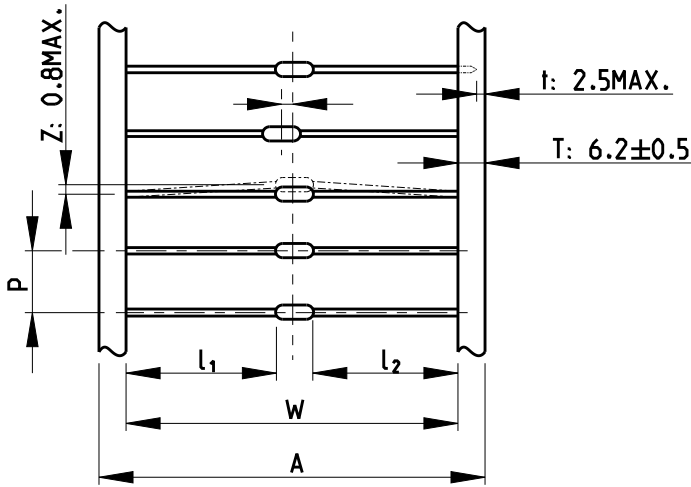
| LOC | DIST | REVISIONS | | | | | |
|-----|------|-----------|-----|---------------------------|-----------|-----|------|
| E | B | P | LTR | DESCRIPTION | DATE | DWN | APVD |
| | | | BA1 | REVISED PER ECO-11-005150 | 29MAR2011 | RK | HMR |
| | | | BA2 | REVISED PER ECR-18-014264 | 07SEP2018 | SR | CB |

FOR FURTHER INFORMATION SEE DATA SHEET FOR CCR SERIES-CERAMIC COMPOSITION RESISTORS

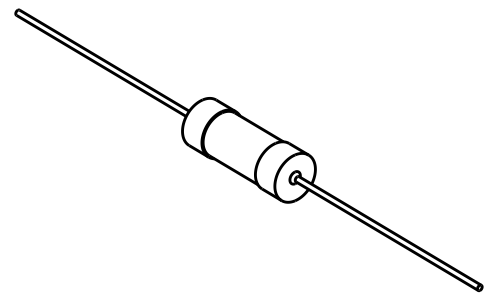


NOTE:
DIMENSIONS SHOWN ABOVE ONLY REFER TO PRODUCT SUPPLIED AS BULK.
FOR TAPED OPTION REFER TO TABLE AND DIAGRAM BELOW.

TAPE PACKAGING GRAPHIC



RoHS Compliant



SCALE 1:1

| PACKAGING STYLE | DIMENSIONS(mm) | | | | |
|-----------------|----------------|------------|--------|--------------------------------|-----------------------|
| | W | P | A | l ₁ -l ₂ | ACCUMULATED TOLERANCE |
| CCR1/2 | 52±1 | 5.08±0.38 | 65±1.0 | 1.0Max. | 101.6±2mm/Px20 |
| CCR1/CCR2 | 63±1 | 10.16±0.80 | - | 1.0Max. | 203.2±3mm/Px20 |

2008

RELEASED FOR PUBLICATION

ALL RIGHTS RESERVED.

THIS DRAWING IS UNPUBLISHED.

© COPYRIGHT 2008

| | | | | |
|--|------|--------------------------------|--|---------------|
| DIMENSIONS: mm | | DWN SUBHASH.M 19-Sep-08 | MATERIAL | FINISH |
| TOLERANCES UNLESS OTHERWISE SPECIFIED: | | CHK PRAKASH.S 19-Sep-08 | TE Connectivity | |
| 0 PLC | ±0.2 | APVD STEPHEN.P 19-Sep-08 | | |
| 1 PLC | ±0.1 | PRODUCT SPEC | NAME CERAMIC COMPOSITION RESISTORS SERIES CCR2 | |
| 2 PLC | ± | APPLICATION SPEC | SIZE | CAGE CODE |
| 3 PLC | ± | | A 4 | 00779 |
| 4 PLC | ± | | DRAWING NO | RESTRICTED TO |
| ANGLES | ±5° | WEIGHT | C-1623720 | |
| CUSTOMER DRAWING | | | SCALE | SHEET |
| | | | 2:1 | 1 OF 1 |
| | | | REV | BA2 |

X-ON Electronics

Largest Supplier of Electrical and Electronic Components

Click to view similar products for [Ceramic Composition Resistors](#) category:

Click to view products by [TE Connectivity](#) manufacturer:

Other Similar products are found below :

[47250](#) [CCR21K0KT](#) [RC1R0EA1K00KE](#) [109AS502KDS](#) [250AS280JDS](#) [109AS333KDS](#) [890SP501K](#) [890AS682LDS](#) [1044AS301KDS](#)
[HPC1C394K](#) [DFN51120](#) [PCF2CT631R121K](#) [PCF2C561K](#) [PCF1CT631R221K](#) [PCF1C221K](#) [PCF1/2C683K](#) [PCF1/2C471K](#) [PCF1/2C151K](#)
[PCF1/2C100K](#) [HPC1C681K](#) [HPC1/2C332K](#) [HPC1/2C471K](#) [HPC1/2CT52A102K](#) [HPC1C102K](#) [HPC1C103K](#) [HPC1C121K](#) [HPC1C123K](#)
[HPC1C153K](#) [HPC1C183K](#) [HPC1C220K](#) [HPC1C221K](#) [HPC1C223K](#) [HPC1C224K](#) [HPC1C272K](#) [HPC1C331K](#) [HPC1C332K](#) [HPC1C390K](#)
[HPC1C470K](#) [HPC1C471K](#) [HPC1C561K](#) [HPC1C680K](#) [HPC1C820K](#) [HPC2C100K](#) [HPC2C102K](#) [HPC2C103K](#) [HPC2C104K](#) [HPC2C121K](#)
[HPC2C153K](#) [HPC2C182K](#) [HPC2C123K](#)