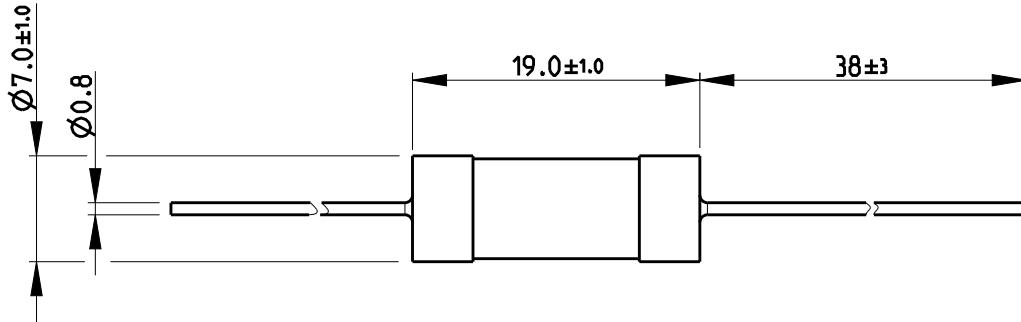


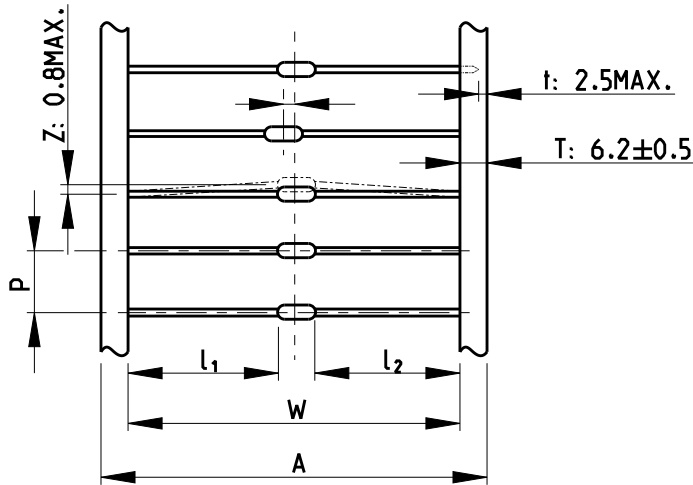
LOC	DIST	REVISIONS					
E	B	P	LTR	DESCRIPTION	DATE	DWN	APVD
			BA1	REVISED PER ECO-11-005150	29MAR2011	RK	HMR
			BA2	REVISED PER ECR-18-014264	07SEP2018	SR	CB

FOR FURTHER INFORMATION SEE DATA SHEET FOR CCR SERIES-CERAMIC COMPOSITION RESISTORS

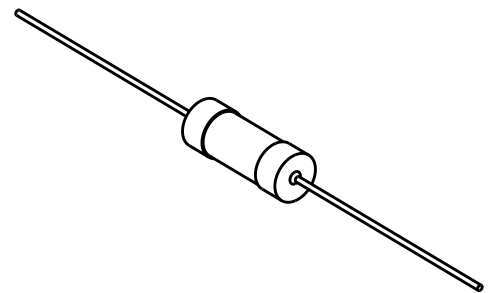


NOTE:
DIMENSIONS SHOWN ABOVE ONLY REFER TO PRODUCT SUPPLIED AS BULK.
FOR TAPED OPTION REFER TO TABLE AND DIAGRAM BELOW.

TAPE PACKAGING GRAPHIC



RoHS Compliant



SCALE 1:1

PACKAGING STYLE	DIMENSIONS(mm)				
	W	P	A	l ₁ -l ₂	ACCUMULATED TOLERANCE
CCR1/2	52±1	5.08±0.38	65±1.0	1.0Max.	101.6±2mm/Px20
CCR1/CCR2	63±1	10.16±0.80	-	1.0Max.	203.2±3mm/Px20

2008

RELEASED FOR PUBLICATION

ALL RIGHTS RESERVED.

THIS DRAWING IS UNPUBLISHED.
COPYRIGHT 2008

DIMENSIONS: mm	DWN	19-Sep-08	MATERIAL	-	FINISH	-
	CHK	19-Sep-08	TE Connectivity			
TOLERANCES UNLESS OTHERWISE SPECIFIED:	PRAKASH.S	19-Sep-08				
	APVD	19-Sep-08	SIZE	CAGE CODE	DRAWING NO	RESTRICTED TO
0 PLC ±0.2	PRODUCT SPEC	-	A 4	00779	C-1623720	
1 PLC ±0.1	APPLICATION SPEC	-	WEIGHT	-		
2 PLC ±			CUSTOMER DRAWING			
3 PLC ±			SCALE	2:1	SHEET	1 OF 1
4 PLC ±						REV BA2
ANGLES 5°						

X-ON Electronics

Largest Supplier of Electrical and Electronic Components

Click to view similar products for [Ceramic Composition Resistors](#) category:

Click to view products by [TE Connectivity](#) manufacturer:

Other Similar products are found below :

[47250](#) [CCR21K0KT](#) [RC1R0EA1K00KE](#) [109AS502KDS](#) [250AS280JDS](#) [109AS333KDS](#) [890SP501K](#) [890AS682LDS](#) [1044AS301KDS](#) [1-1623720-7](#) [HPC1C394K](#) [DFN51120](#) [PCF2CT631R121K](#) [PCF2C561K](#) [PCF1CT631R221K](#) [PCF1C221K](#) [PCF1/2C683K](#) [PCF1/2C471K](#) [PCF1/2C151K](#) [PCF1/2C100K](#) [HPC1C681K](#) [HPC1/2C332K](#) [HPC1/2C471K](#) [HPC1/2CT52A102K](#) [HPC1C102K](#) [HPC1C103K](#) [HPC1C121K](#) [HPC1C123K](#) [HPC1C153K](#) [HPC1C183K](#) [HPC1C220K](#) [HPC1C221K](#) [HPC1C223K](#) [HPC1C224K](#) [HPC1C272K](#) [HPC1C331K](#) [HPC1C332K](#) [HPC1C390K](#) [HPC1C470K](#) [HPC1C471K](#) [HPC1C561K](#) [HPC1C680K](#) [HPC1C820K](#) [HPC2C100K](#) [HPC2C103K](#) [HPC2C121K](#) [HPC2C151K](#) [HPC2C182K](#) [HPC2C123K](#) [HPC1C562K](#)