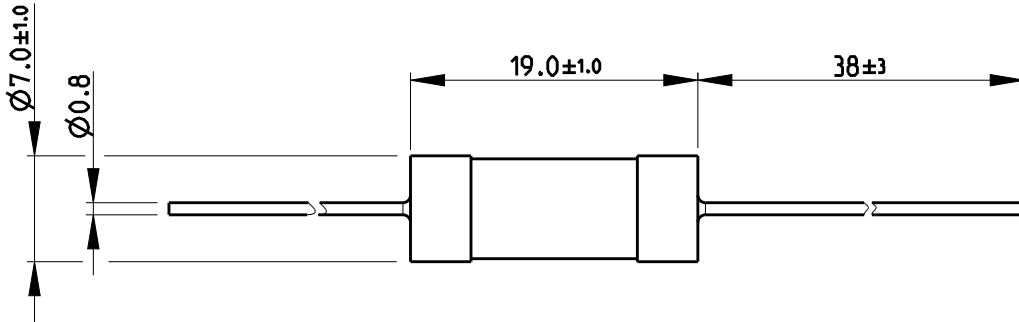


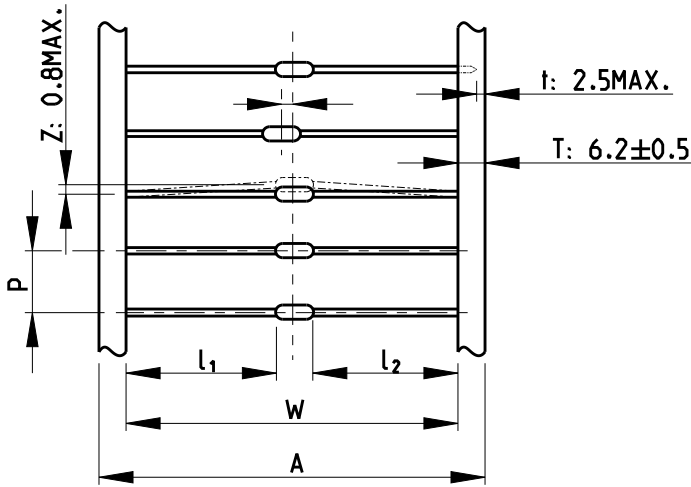
LOC	DIST	REVISIONS					
		P	LTR	DESCRIPTION	DATE	DWN	APVD
E	B		BA1	REVISED PER ECO-11-005150	29MAR2011	RK	HMR
			BA2	REVISED PER ECR-18-014264	07SEP2018	SR	CB

FOR FURTHER INFORMATION SEE DATA SHEET FOR CCR SERIES-CERAMIC COMPOSITION RESISTORS

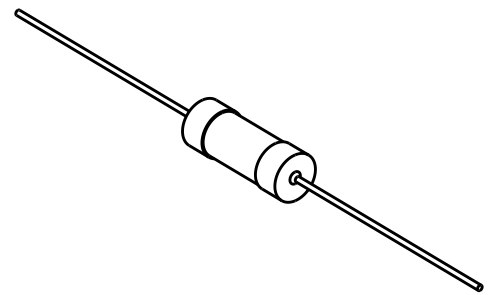


NOTE:  
DIMENSIONS SHOWN ABOVE ONLY REFER TO PRODUCT SUPPLIED AS BULK.  
FOR TAPED OPTION REFER TO TABLE AND DIAGRAM BELOW.

TAPE PACKAGING GRAPHIC



RoHS Compliant



SCALE 1:1

PACKAGING STYLE	DIMENSIONS(mm)				
	W	P	A	l <sub>1</sub> -l <sub>2</sub>	ACCUMULATED TOLERANCE
CCR1/2	52±1	5.08±0.38	65±1.0	1.0Max.	101.6±2mm/Px20
CCR1/CCR2	63±1	10.16±0.80	-	1.0Max.	203.2±3mm/Px20

2008

RELEASED FOR PUBLICATION

ALL RIGHTS RESERVED.

THIS DRAWING IS UNPUBLISHED.

© COPYRIGHT 2008

DIMENSIONS: mm		DWN SUBHASH.M 19-Sep-08	MATERIAL	FINISH
TOLERANCES UNLESS OTHERWISE SPECIFIED:		CHK PRAKASH.S 19-Sep-08	TE Connectivity	
0 PLC ±0.2 1 PLC ±0.1 2 PLC ± 3 PLC ± 4 PLC ± ANGLES 5°		APVD STEPHEN.P 19-Sep-08		
		PRODUCT SPEC	NAME CERAMIC COMPOSITION RESISTORS SERIES CCR2	
		APPLICATION SPEC	SIZE	CAGE CODE
		WEIGHT	A 4	00779
CUSTOMER DRAWING		DRAWING NO	C-1623720	
		RESTRICTED TO	SCALE	SHEET
			2:1	1 OF 1
		REV	BA2	

## X-ON Electronics

Largest Supplier of Electrical and Electronic Components

*Click to view similar products for [Ceramic Composition Resistors](#) category:*

*Click to view products by [TE Connectivity](#) manufacturer:*

Other Similar products are found below :

[47250](#) [CCR21K0KT](#) [RC1R0EA1K00KE](#) [109AS502KDS](#) [250AS280JDS](#) [109AS333KDS](#) [890SP501K](#) [890AS682LDS](#) [1044AS301KDS](#)  
[HPC1C394K](#) [DFN51120](#) [PCF2CT631R121K](#) [PCF2C561K](#) [PCF1CT631R221K](#) [PCF1C221K](#) [PCF1/2C683K](#) [PCF1/2C471K](#) [PCF1/2C151K](#)  
[PCF1/2C100K](#) [HPC1C681K](#) [HPC1/2C332K](#) [HPC1/2C471K](#) [HPC1/2CT52A102K](#) [HPC1C102K](#) [HPC1C103K](#) [HPC1C121K](#) [HPC1C123K](#)  
[HPC1C153K](#) [HPC1C183K](#) [HPC1C220K](#) [HPC1C221K](#) [HPC1C223K](#) [HPC1C224K](#) [HPC1C272K](#) [HPC1C331K](#) [HPC1C332K](#) [HPC1C390K](#)  
[HPC1C470K](#) [HPC1C471K](#) [HPC1C561K](#) [HPC1C680K](#) [HPC1C820K](#) [HPC2C100K](#) [HPC2C102K](#) [HPC2C103K](#) [HPC2C104K](#) [HPC2C121K](#)  
[HPC2C182K](#) [HPC2C123K](#) [HPC1C562K](#)