



TE3112 PRINTER THERMAL TRANSFER PRINTER

TECHNICAL DATASHEET

TTDS-228 issue 4, May 2015

The TE3112 printer is a robust 24 hour duty cycle, industrial computer-driven 300dpi thermal transfer printer. Specially designed to print on a wide range of TE Connectivity (TE) identification marker sleeves, cable markers and labels.

Features

- High accuracy printing
- Easy to use
- Light weight
- Small footprint
- Easy to fit accessories
- Economic to run and for replacement parts

Applications

- Office environment
- Industrial environment

Approvals / Declarations

- CE
- FCC Class A
- CB
- KC
- UL
- GOST
- CCC

Environmental

- Further information and a downloadable declaration covering RoHS and REACH compliance can be found at the 'TE Product Compliance Support Centre':

<http://www.te.com/en/resources/product-compliance.html>

Specifications

The printer's 300dpi resolution combined with recommended media and Thermal Transfer ribbons, meet all relevant TE RW performance specifications.

Print quality and print performance can only be guaranteed when specific TE printer and ribbons are used.

The current list of printers and ribbons can be found in TE document 411-121005 'Identification Printer Product Ribbon Matrix'. This document can be found at the TE document centre:

<http://www.te.com/commerce/DocumentDelivery/DDEController>

PRINTER ORDERING INFORMATION

DESCRIPTION	PART NUMBER
TE3112-PRINTER	CR2120-000

PRINTER PROPERTIES

PERFORMANCE

PRINT SPEED	30, 40, 50, 75, 100, 125mm/s. (1, 1.5, 2, 3, 4, 5 in/s)
PRINT WIDTH MAX:	105.6mm (4.16 in)
PRINT DEFINITION:	300 dpi Thermal Transfer
LABEL WIDTH	4 to 106mm (0.16 to 4.2 in), 116mm (4.6 in) backing paper width
LABEL HEIGHT	5mm (0.2 in) minimum to 4,000mm (157.5 in) maximum
MEDIA ROLL CAPACITY	205mm (8 in) Outside Diameter, inside core diameter 38 – 100mm (1.5 – 4 in)
INK RIBBONS	25mm (1 inch) core, ink inside or outside, variable length up to 500M (1640 ft)
CUT MODE	Cutter & Perforator available as accessories. Cut length up to >5mm (0.2 in). Up to 120 cuts/min
SENSOR	Variable position Gap & Reflective (automatic calibration)
ELECTRICAL REQUIREMENTS	100 to 240V - 50/60Hz, PFC
OPERATING TEMPERATURE	+5°C to +40°C (+41°F to +104°F).
OPERATING HUMIDITY	10% to 85% non-condensing RH
POWER CONSUMPTION	Power save mode 9W Typical 45W / Max 65W
PHYSICAL CHARACTERISTICS	Depth: 446mm (17.5 in) Height: 274mm (10.8 in) Width: 242mm (9.5 in) Weight: 9kg (19.8 lb)
PERFORATOR/CUTTER	Maximum physical product width 110mm (4.3 in). Cuts/minute length up to 120 cuts, 150 perforations Cutting length >5mm (0.2 in)
INTERFACES	USB 2.0 full speed slave for PC connection at the rear of the printer USB master at rear of the printer X2 RS232 C 1.200 up to 230.400 Baud rate / 8 Bit Ethernet 10 / 100 Base T, LPD, Raw IP-Printing, ftp-Printing, DHCP, HTTP, FTP, SMTP, SNMP, TIME, Zeroconf, mDNS, SOAP
ELECTRONICS	RAM 64MB, Processor speed 266MHz, Memory IFFS flash 8MB

PRINTER SPARE PARTS ORDERING INFORMATION (consumables)

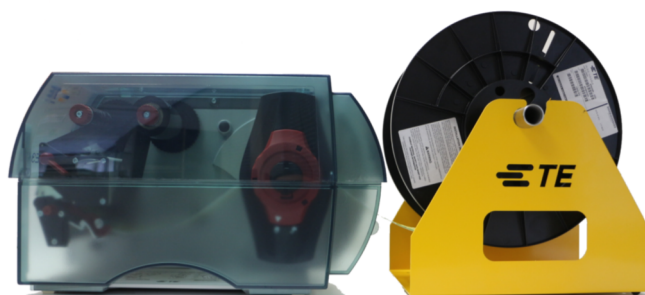
300 dpi Printhead	
Description	TTC-PRINTER-PRINthead-300
Part number	CU0620-000
Drive roller	
Part number	TTC-PRINTER-ROLLER
Description	CP3965-000
Media Sensor	
Description:	TTC-PRINTER-2000/3000-MEDIA SENSOR
Part number	CN8299-000

PRINTER ACCESSORY ORDEING INFORMATION

Cutter	
Description:	TTC-PRINTER-CUTTER
Part number:	ED4096-000
Perforator:	
Description:	TTC-PRINTER-PERFORATOR
Part number:	ED4095-000
Metal Cover	
Description:	TE3112-METAL-COVER
Part number:	EC9824-000
Universal reel holder	
Description:	PRINTER-UNIVERSAL-REEL-HOLDER
Part number:	EC9926-000



TE3112 fitted with, metal cover and Cutter/perforator

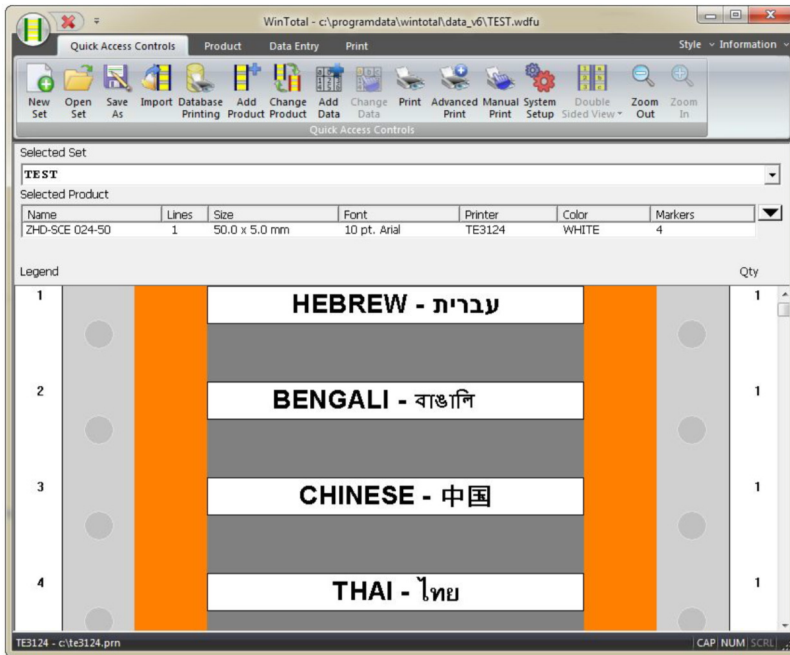


TE3112 with Universal reel holder

SOFTWARE ORDERING INFORMATION

WINTOTAL 6 (Dongle)	
Description	WINTOTAL-6-DONGLE
Part number	EC9816-000
WINTOTAL 5 (Dongle)	
Description	WINTOTAL-5-DONGLE
Part number	ED4097-000
Printeasy 5 Express	
Description	PEP-5-Express
Part number	CC6161-000
Printeasy 5 Pro	
Description	PEP-5-Pro
Part number	CC6174-000
Printeasy 5 Suite	
Description	PEP-5-Suite
Part number	CC6178-000

SOFTWARE



Cable Markers are fully supported by WINTOTAL and PrintEasy label printing software, available from the TE product store:

<http://www.te.com/en/general/label-printing-software.html>

Contact a TE representative for further information

te.com

TE Connectivity, TE Connectivity (logo) and Every Connection Counts are trademarks. All other logos, products and/or company names referred to herein might be trademarks of their respective owners.

The information given herein, including drawings, illustrations and schematics which are intended for illustration purposes only, is believed to be reliable. However, TE Connectivity makes no warranties as to its accuracy or completeness and disclaims any liability in connection with its use. TE Connectivity's obligations shall only be as set forth in TE Connectivity's Standard Terms and Conditions of Sale for this product and in no case will TE Connectivity be liable for any incidental, indirect or consequential damages arising out of the sale, resale, use or misuse of the product. Users of TE Connectivity products should make their own evaluation to determine the suitability of each such product for the specific application.

© 2015 TE Connectivity Ltd. family of companies All Rights Reserved.

X-ON Electronics

Largest Supplier of Electrical and Electronic Components

Click to view similar products for [TE Connectivity](#) manufacturer:

Other Similar products are found below :

[D38999/24FJ4AN](#) [570416-000](#) [CLTEQ-M81CE-SSRELAY-4-20V](#) [4-1195131-0](#) [650069-000](#) [SMD100-2](#) [358838-000](#) [CB-1022B-78](#)
[RM707012](#) [RP410012](#) [MMS42](#) [1-640426-8](#) [2EDL4CM](#) [DTS20W19-11PD-3028-LC](#) [RM202615](#) [NC6-P104-06](#) [MSPS103B](#) [DTS26F21-](#)
[41HE-LC](#) [DTS26F21-41AE](#) [DTS26F21-41PE-LC](#) [DTS26F21-11SE-3028-LC](#) [30DCB6](#) [1932144-1](#) [293545-4](#) [LVR125S](#) [MS27466T25F4PB](#)
[CKB-38-78010](#) [TR04AI-TINELLOCKRING](#) [1206SFF150F/63-2](#) [D38999/20JB35HA](#) [TE1500A2R2J](#) [D38999/20WC8BB](#) [DTS24F19-11SC-](#)
[3028-LC](#) [D38999/24WG11HA](#) [D38999/24WG11HN](#) [MS27467T21F11H](#) [DJT16E21-11HA](#) [MS27467T21F35J](#) [MS27467T21F11J](#)
[MS27467T21F16H-LC](#) [MS27467T21F35H](#) [MS27467T21F41H-LC](#) [1206SFH150F/24-2](#) [RP330024](#) [DJT16E21-11PA-LC](#) [DJT16E21-11HA-](#)
[LC](#) [DJT16E21-11AA](#) [MS27467T21B11JA](#) [DJT16E21-11JA](#) [MS27467T21B11JA-LC](#)