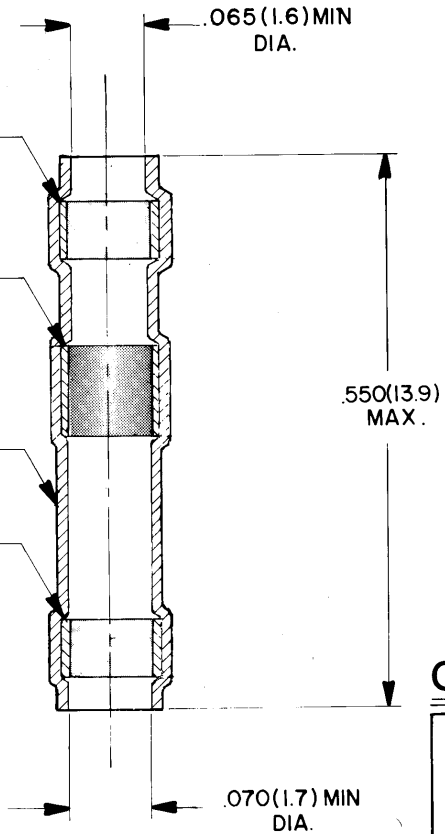


677011

| REVISIONS | | | |
|-----------|-----|----------------------|----------------------|
| ZONE | LTR | DESCRIPTION | DATE APPROVED |
| | C | CHANGE PER DCO 01075 | 1/24/80 <i>Blair</i> |



NOTES :

1. MATERIALS :
 - 1-A INSULATION SLEEVE; HEAT SHRINKABLE, RADIATION CROSSLINKED MODIFIED POLYVINYLIDENE FLUORIDE, TRANSPARENT BLUE.
 - 1-B SOLDER PREFORM; SOLDER PREFORM WITH FLUX TYPE: Sb5 SRAP PER QQ-S-571.
 - 1-C MELTABLE INSERTS; LOW OUTGASSING IMMERSION RESISTANT THERMOPLASTIC.
2. THIS SLEEVE IS DESIGNED TO ATTACH 20 THROUGH 26 GAUGE TIN PLATED OR SILVER PLATED CONDUCTORS TO THE TERMINALS OF A **Raychem** MTC100 SERIES WAFER.

© Raychem Corporation 1979

CONNECTOR SPECIFICATION CONTROL DRAWING

| | | | | | |
|--|----------|-------------------|----------|---|--------------|
| UNLESS OTHERWISE SPECIFIED DIMENSIONS ARE IN INCHES BRACKETED DIMENSIONS () ARE METRIC AND TOLERANCES ARE: .XXX: ± (M. M.) .XX: ± (M. M.) Δ: ± | DRAWN | SA. LOPEZ | 5-7-79 | Raychem <small>RAYCHEM CORPORATION 300 CONSTITUTION DR. #1 MENLO PARK, CALIFORNIA 94025</small> | |
| | CHECKED | <i>Ph</i> | | | |
| | APPROVED | <i>Ph</i> | 5-7-79 | TITLE SOLDER SLEEVE WIRE TERMINATOR DOUBLE SEAL FOR TEMP RATING 150°C(Sb5)MTC100 SERIES | |
| | APPROVED | <i>E. Steiner</i> | 5-7-79 | | |
| | APPROVED | <i>E. Steiner</i> | 5-7-79 | | |
| | PROJECT | 6448-7055 | SIZE | CODE IDENT | DWG. NO. |
| | | | B | NO. 06090 | CTA-0025 |
| | | | | WEIGHT | SHEET 1 OF 1 |

DO NOT SCALE THIS DRAWING

X-ON Electronics

Largest Supplier of Electrical and Electronic Components

Click to view similar products for [Solder Sleeves & Shield Tubing](#) category:

Click to view products by [TE Connectivity](#) manufacturer:

Other Similar products are found below :

[899170-000](#) [620040N001](#) [620069N003](#) [CTA-0050-01](#) [629624-000](#) [6500750004](#) [6501390002](#) [CX0781-000](#) [696396-000](#) [697080-000](#) [D-150-0331CS2902](#) [D-181-1222-90/9CS2800](#) [D-300-01CS1108](#) [715325N001](#) [908357N001](#) [982127-1](#) [D-436-0182CS246](#) [D-436-37CS2651](#) [D-436-61CS246](#) [D-436-82-CS2621](#) [D-659-0087](#) [E53797N001](#) [CB0213-000](#) [CB0219-000](#) [S200-2-01](#) [S200-4-00CS2904](#) [LSS-81-16AA-CS5575](#) [ST18-2-00](#) [FLX40-020-04-CS8651](#) [325534-000](#) [CTA-0025](#) [D-108-07CS436](#) [D-128-0010](#) [D-141-0108CS404](#) [D-144-41CS1371](#) [D-150-0231-NRCS2896](#) [D-150-1011](#) [395947-000](#) [427243N001](#) [B-801-18-01](#) [515-9](#) [C67137-000](#) [CB0220-000](#) [D-436-0185CS1102](#) [D-436-36CS2908](#) [D-436-37CS2908](#) [D-436-52CS246](#) [D44133N001](#) [LSS-26-8A](#) [626168-000](#)