

REV	CTDI**E***	REVISION HISTORY			
D		REV	DESCRIPTION	DATE	APPROVED
		D	REVISED PER E.O. C6428	060210	D.W.

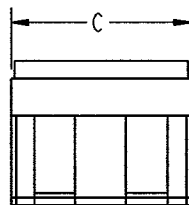
8. SIMILAR TO CTDI26E01A EXCEPT USES FIVE DIELECTRICALLY SEPARATED BUS PLATES.

9. SIMILAR TO CTDI26E01A EXCEPT USES TWO DIELECTRICALLY SEPARATED BUS PLATES.

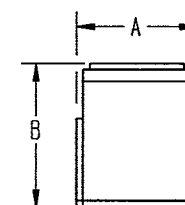
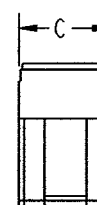
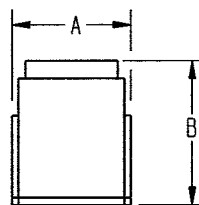
8. SEE DRAWING #CTJ-R00 FOR APPLICABLE MODULE INSERTION & REMOVAL TOOL. (2 REQUIRED FOR CTDI26E TYPE MODULES)

7. REQUIRED CONTACT TOOL PART NUMBERS:

SIZE	INSERTION/EXTRACTION TOOL
12	M81969/16-03 OR M81969/8-10
16	M81969/14-03
20	M81969/14-10
22	M81969/14-01



CTDI26E***
CTDI062E*** (SIZE 12 MODULE)



CTDI60E01F (SIZE 16 MODULE)

PART NUMBER	CONTACT QUANTITY & SIZE	A ± .010	B MAX	C ± .010
CTDI26E01A	2 SIZE 12 & 6 SIZE 16	.672	1.047	1.020
CTDI60E01F	2 SIZE 16 & 6 SIZE 20	.672	.920	.510
CTDI26E02E	2 SIZE 12 & 6 SIZE 16	.672	1.047	1.020
CTDI062E05A	5 INDIVIDUAL BUSES WITH 1 SIZE 22, 1 SIZE 20 & 1 SIZE 16	.672	.920	1.020

ALL SHEETS ARE THE SAME REVISION STATUS

6. SEE ENVELOPE DRAWING CTJ-3*-** FOR SUITABLE RAIL ASSEMBLIES.

5. FOR CONTACT DATA SEE ENVELOPE DWG. 1625-1-0000.

4. CTDI**E***



3. THE BUS IDENTIFICATION WILL BE SCREENED ON MODULE ASSY. FOR AVAILABLE MODULE ARRANGEMENT SEE ENVELOPE DWG. CTD500.

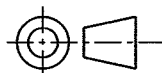
2. SEE "GENERAL DESCRIPTION" FOR ELECTRICAL AND MATERIAL SPECIFICATION.

1. DIMENSIONS ARE IN INCHES, UNLESS OTHERWISE SPECIFIED.

PROPERTY OF DEUTSCH E.C.D.
THIS DRAWING CONTAINS PROPRIETARY INFORMATION THAT SHALL NOT BE DISCLOSED, DUPLICATED, NOR USED IN WHOLE OR IN PART FOR ANY PURPOSE OTHER THAN TO EVALUATE THIS DRAWING

TOLERANCE UNLESS OTHERWISE SPECIFIED
DIMENSIONS ARE IN INCHES
DECIMALS .XXX ± .005; .XXXX ± .0005
ANGLES: X° ± .5°; X.X° ± .25°
T.I.R. .010
PARTS TO BE FREE OF BURRS & SHARP EDGES

THIRD ANGLE PROJECTION



SIGNATURE & DATE	
DR	R. COTO 060109
CHK	<i>D. Whitace</i> 060210
PE	R. COTO 060109
APPD	<i>Reynolds</i> 060213
MATERIAL	
FINISH	
MATERIAL CODE	

DEUTSCH DEFENSE/AEROSPACE OPERATION 5733 WEST WHITTIER AVE. HEMET, CA 92545		
TITLE MODULE ASSEMBLY, DISTRIBUTION JUNCTION, ENVIRONMENTAL ENVELOPE		
SIZE B	CAGE CODE 11139	DWG NO CTDI**E***
SCALE NONE	WEIGHT	SHEET 1 OF 1

X-ON Electronics

Largest Supplier of Electrical and Electronic Components

Click to view similar products for [Terminal Junction Modules](#) category:

Click to view products by [TE Connectivity](#) manufacturer:

Other Similar products are found below :

[00175510302](#) [00175520502](#) [00175530502](#) [00175510202](#) [00175510402](#) [00175520202](#) [00175520402](#) [00175520602](#) [591900-1](#) [CTJ116E01D-513](#) [CTJ-2A-01](#) [CTJ-3A-04](#) [CTJ720E01B](#) [M81714/60-20-06](#) [M81714/60-20-2](#) [M81714/60-22-01](#) [RBTB16-3W](#) [CTE220-10-102-1050](#) [CTJ-3A-03-4021](#) [CTJ-3A-06-4021](#) [CTJ-3D-10](#) [CTJ620E06N-513](#) [TJ11E-06-04](#) [TJM112701](#) [TJM116701](#) [TJM116702](#) [TJS316702](#) [YCTD160E01FC108000](#) [YHLZ-22](#) [YHLZR-45](#) [TJM120702](#) [TJM120704](#) [TJS316701](#) [YHLZE8-8](#) [YHLZ16-8](#) [YHLZ16-4](#) [YHLZ16-2](#) [CTJ716K01D](#) [TJM120601](#) [TJM120605](#) [YCTJ420E021C098000](#) [CTD126E01A](#) [CTJ120E02C-6148](#) [CTJ120E02C-6162](#) [CTJ716E01D-6181](#) [M81714/65-20-2](#) [YHLZ-8](#) [BTJ122E05E-513](#) [BTJ120E04A-513](#) [SJM020401](#)