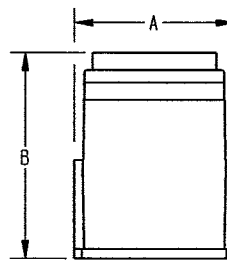
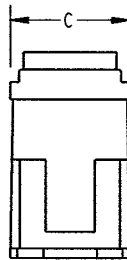
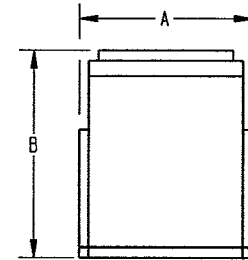
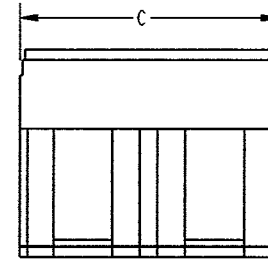


REV	CTJ1**E***	REVISION HISTORY			
B		REV	DESCRIPTION	DATE	APPROVED
		B	REVISED PER E.O. C6428	060210	D.W.



SIZE 22, 20 & 16.



SIZE 12 ONLY

7. REQUIRED CONTACT TOOL PART NUMBERS:

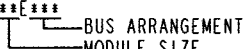
SIZE	INSERTION/EXTRACTION TOOL
22	M81969/14-01
20	M81969/14-10
16	M81969/14-03
12	M81969/16-03 OR M81969/8-10

PART NUMBER	SIZE	A ± .010	B MAX	C
CTJ 122 E***	22	.672	.760	.510±.006
CTJ 120 E***	20	.672	.920	.510±.006
CTJ 116 E***	16	.672	.920	.510±.006
CTJ 112 E***	12	.672	1.047	1.020±.010

ALL SHEETS ARE THE SAME REVISION STATUS

6. SEE ENVELOPE DRAWING #CTJ-3\*-\*\* FOR SUITABLE RAIL ASSEMBLIES.

5. FOR CONTACT DATA SEE ENVELOPE DWG. 1625-1-0000.

4. CTJ1\*\*E\*\*\*  

 BUS ARRANGEMENT  
 MODULE SIZE

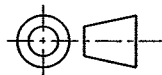
3. THE BUS IDENTIFICATION WILL BE SCREENED ON MODULE ASSY. FOR AVAILABLE MODULE ARRANGEMENT SEE ENVELOPE DWG. CTJ500.


2. SEE "GENERAL DESCRIPTION" FOR ELECTRICAL AND MATERIAL SPECIFICATION.

1. DIMENSIONS ARE IN INCHES, UNLESS OTHERWISE SPECIFIED.

TOLERANCE UNLESS OTHERWISE SPECIFIED  
 DIMENSIONS ARE IN INCHES  
 DECIMALS .XXX±.005; .XXXX±.0005  
 ANGLES: X° ±.5°; X.X° ±.25°  
 T.I.R. .010  
 PARTS TO BE FREE OF BURRS & SHARP EDGES

THIRD ANGLE PROJECTION



PROPERTY OF DEUTSCH E.C.D. THIS DRAWING CONTAINS PROPRIETARY INFORMATION THAT SHALL NOT BE DISCLOSED, DUPLICATED, NOR USED IN WHOLE OR IN PART FOR ANY PUPOSE OTHER THAN TO EVALUATE THIS DRAWING				
SIGNATURE & DATE		 <b>DEUTSCH</b> DEFENSE/AEROSPACE OPERATION 5733 WEST WHITTIER AVE. HEMET, CA 92545		
DR	R. COTO 060109	TITLE MODULE ASSEMBLY, CTJ FEEDBACK SIZE 22, 20, 16 & 12 ENVIRONMENTAL ENVELOPE		
CHK	<i>D. Whitacre</i> 060210			
PE	R. COTO 060109	SIZE	CAGE CODE	DWG NO
APPD	<i>R. Coto</i> 060213	B	11139	CTJ1**E***
MATERIAL		SCALE	NONE	WEIGHT
FINISH		SHEET 1 OF 1		

## X-ON Electronics

Largest Supplier of Electrical and Electronic Components

*Click to view similar products for te connectivity manufacturer:*

Other Similar products are found below :

[570416-000](#) [CLTEQ-M81CE-SSRELAY-4-20V](#) [4-1633138-8](#) [D38999/24FJ4AN](#) [4-1195131-0](#) [650069-000](#) [SMD100-2](#) [2EDL4CM](#)  
[DTS20W19-11PD-3028](#) [DTS20W19-11PD-3028-LC](#) [DTS20W19-32SD-3028-LC](#) [DTS20W19-32SD-3028](#) [NC6-P104-06](#) [TXR64AB90-](#)  
[3616AI](#) [DTS26F21-41HE](#) [DTS26F21-41AE](#) [DTS26F21-41PE-LC](#) [DTS26F21-11SE-3028-LC](#) [D38999/24WF32JE](#) [D38999/24WF32SE-LC](#)  
[DTS24W19-32HE](#) [D38999/20JB35HA](#) [D38999/24WJ20PA](#) [164-8033-08](#) [D38999/24FF32JE](#) [D38999/24FF32SE-LC](#) [D38999/24WF32JB](#)  
[D38999/24WG11HA](#) [D38999/24WG11HN](#) [MS27467T21F11H](#) [DJT16E21-11HA](#) [DTS24F19-32HE](#) [DTS20W19-32SA-3028-LC](#) [DTS24F19-](#)  
[11SC-3028-LC](#) [DTS24F19-11SC-3028](#) [DJT14E13-98HB](#) [D38999/20WC8BB](#) [1-330599-5](#) [DTS24F21-41HN-LC](#) [DTS24F21-41HN](#)  
[DTS24F21-41AN](#) [DTS24F21-39HN](#) [DTS24F21-41PN-LC](#) [AFD50-10-6SN-1A-LC](#) [DJT10F17-26HC](#) [DTS24W19-32HB](#) [ACT20JE99HA](#)  
[DJT10E17-26HC](#) [DJT10E17-26HN](#) [DJT10F17-26HA](#)