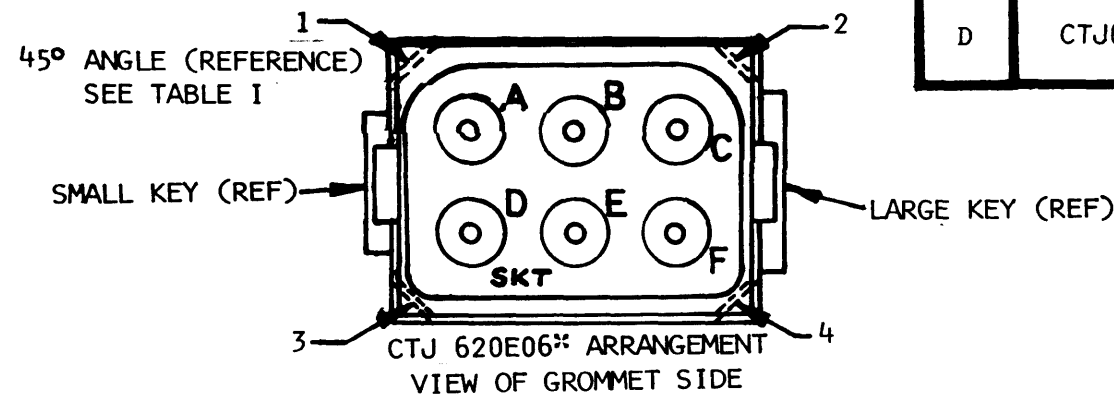
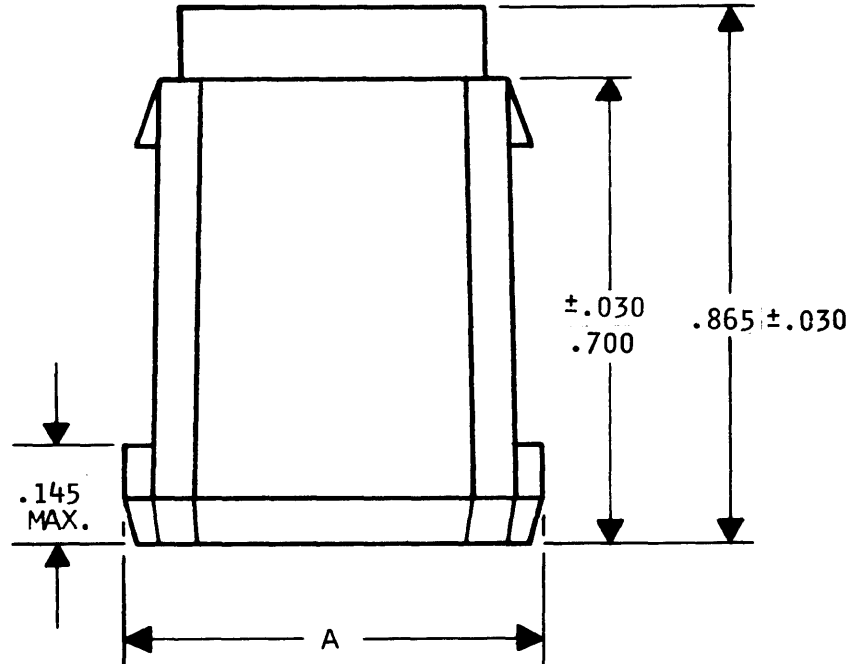
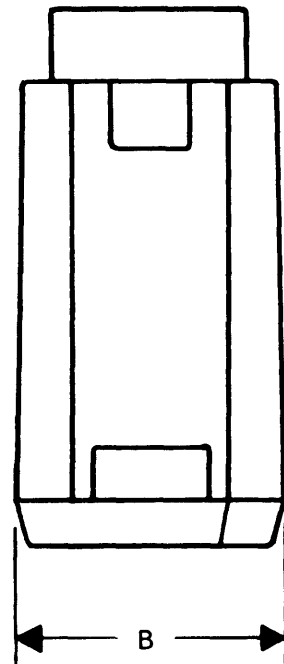


CTJ 620E12\*\* ARRANGEMENT  
GROMMET IDENTIFICATION



CTJ 620E06\*\* ARRANGEMENT  
VIEW OF GROMMET SIDE



D CTJ620E\*\*\*\*

REVISIONS			
SYM	DESCRIPTION	DATE	APPROVED
N/C	NEW RELEASE PER E.O. 82018	1-24-76	
A	REVISED & REDRAWN PER E.O. 81099	2-4-76	JDM
B	REVISED PER E.O. 82118	5/11/76	Rev. H.
C	REVISED PER E.O. 88553	3-1-83	J.H.
D	REVISED PER E.O. A8935.	12-20-90	P

9. CAVITY IDENTIFICATION IS SHOWN FOR REFERENCE ONLY AND MAY NOT BE IN TRUE POSITION.
8. MODULE UNMATING TOOL, PART NUMBER CTJ-R00, TO BE ORDERED SEPARATELY.
7. CONTACT INSERTION/REMOVAL TOOL, DEUTSCH PART NUMBER M15570-20 (MS PART NUMBER M83723-31-20).
6. SOCKET CONTACTS, DEUTSCH PART NUMBER CTS-S20/20 (MS PART NUMBER M39029/22-192).
5. MODULES MEET APPLICABLE PERFORMANCE REQUIREMENTS OF MIL-C-83723, REV B, EXCEPT AS FOLLOWS:  
CONTACT ENGAGING & SEPARATION FORCES (INITIAL):  
18 OZ MAX/.7 OZ. MIN.  
  
#20 SOCKET CONTACT RETENTION FORCES: 15 LBS. MIN. (AXIAL)  
USABLE WIRE SIZE: AWG 20 THRU 24.  
GROMMET WILL SEAL ON SMOOTH INSULATION FROM .040 TO .083" O.D.  
MODULE MATING FORCE: 6 CONTACT - 19 LBS. MAX., 12 CONTACT  
26 LBS. MAX.
4. MATERIAL: HOUSING: PLASTIC, GROMMET: SILICONE ELASTOMER, CONTACTS: COPPER ALLOY.
3. CONTACT CENTER TO CENTER SPACING .130
2. DIMENSIONS ARE SPECIFIED IN INCHES.
1. MATES WITH MODULE, RECEPTACLE, DEUTSCH PART NUMBER CTJ920E\*\*\*\*.

KEYING POSITION	45° ± 1° ANGLE LOCATIONS
N	1 & 2
1	3 & 4
2	1 & 3
3	2 & 4

PART NUMBER	A ± .010	B ± .010	NO. OF CONTACTS
CTJ620E06**	.530	.360	6
CTJ620E12**	.652	.510	12

EXPLANATION OF PART NUMBER: CTJ 6 20 E \*\*\*\* \*\*

BASIC IDENTIFIER \_\_\_\_\_  
 PLUG MODULE \_\_\_\_\_  
 CONTACT SIZE (20) \_\_\_\_\_  
 ENVIRONMENTAL \_\_\_\_\_  
 NUMBER OF CONTACTS \_\_\_\_\_  
 06 = 6  
 12 = 12

KEYING POSITION. PROVIDED WITH 2 45° CORNERS (REF DASHED LINES) IN PLACE OF 90° CORNERS, AT INDICATED LOCATION ON GROMMET VIEW AND TABLE I.  
 N = STANDARD  
 (CONSULT FACTORY) 1 THRU 3, ALTERNATE.

**NOTE:**

SIGNATURE & DATE		MODULE ASSEMBLY, PLUG COMPLETE TERMINATION JUNCTION 6 & 12 CONTACTS  ENVELOPE	CP	MATL CODE	
DR	<i>John Platt 2-4-76</i>		The Deutsch Company ELECTRONIC COMPONENTS DIVISION Municipal Airport Benning, California		
CHK	<i>Kenyon Harington 2-4-76</i>		B	CTJ620E****	
PE	<i>J. MACDONALD 2-4-76</i>			DWG SIZE	CODE 11139 SHEET 1 OF 1
APPD			SCALE NONE	WT	

## X-ON Electronics

Largest Supplier of Electrical and Electronic Components

*Click to view similar products for [Terminal Junction Modules](#) category:*

*Click to view products by [TE Connectivity](#) manufacturer:*

Other Similar products are found below :

[00175510302](#) [00175520502](#) [00175530502](#) [00175510202](#) [00175510402](#) [00175520202](#) [00175520402](#) [00175520602](#) [591900-1](#) [CTJ116E01D-513](#) [CTJ-2A-01](#) [CTJ-3A-04](#) [CTJ720E01B](#) [M81714/60-20-06](#) [M81714/60-20-2](#) [M81714/60-22-01](#) [RBTB16-3W](#) [CTE220-10-102-1050](#) [CTJ-3A-03-4021](#) [CTJ-3A-06-4021](#) [CTJ-3D-10](#) [CTJ620E06N-513](#) [TJ11E-06-04](#) [TJM112701](#) [TJM116701](#) [TJM116702](#) [TJS316702](#) [YCTD160E01FC108000](#) [YHLZ-22](#) [YHLZR-45](#) [TJM120702](#) [TJM120704](#) [TJS316701](#) [YHLZE8-8](#) [YHLZ16-8](#) [YHLZ16-2](#) [CTJ716K01D](#) [TJM120601](#) [TJM120605](#) [YCTJ420E021C098000](#) [CTD126E01A](#) [CTJ120E02C-6148](#) [CTJ120E02C-6162](#) [CTJ716E01D-6181](#) [M81714/65-20-2](#) [YHLZ-8](#) [BTJ122E05E-513](#) [BTJ120E04A-513](#) [SJM020401](#) [TJHD22607](#)