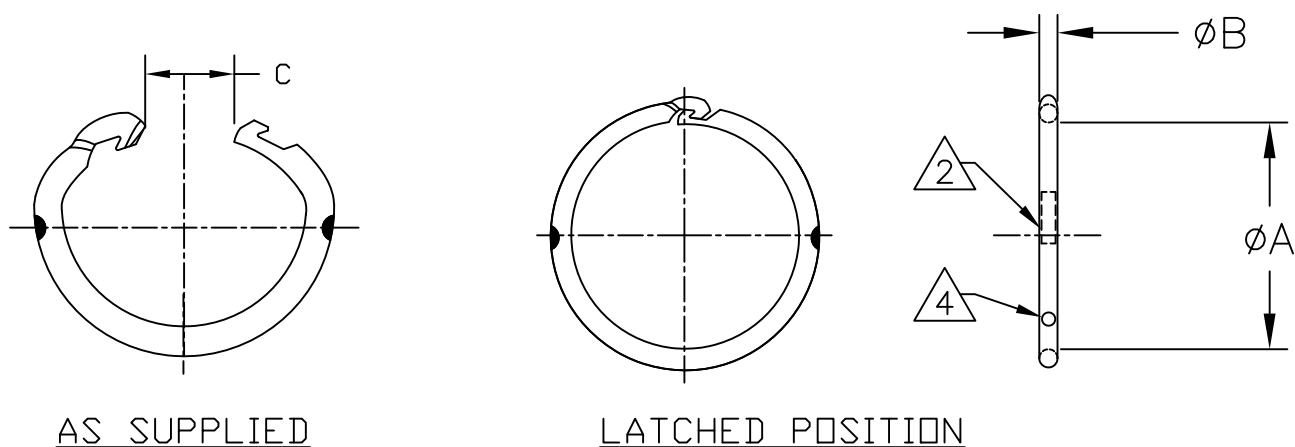


THIS DRAWING AND THE INFORMATION SET FORTH HERE-ON ARE THE PROPERTY OF TYCO ELECTRONICS, AND ARE TO BE HELD IN TRUST AND CONFIDENCE. PUBLICATION, DUPLICATION, DISCLOSURE, OR USE FOR ANY PURPOSE NOT EXPRESSLY AUTHORIZED IN WRITING BY TYCO ELECTRONICS IS PROHIBITED.

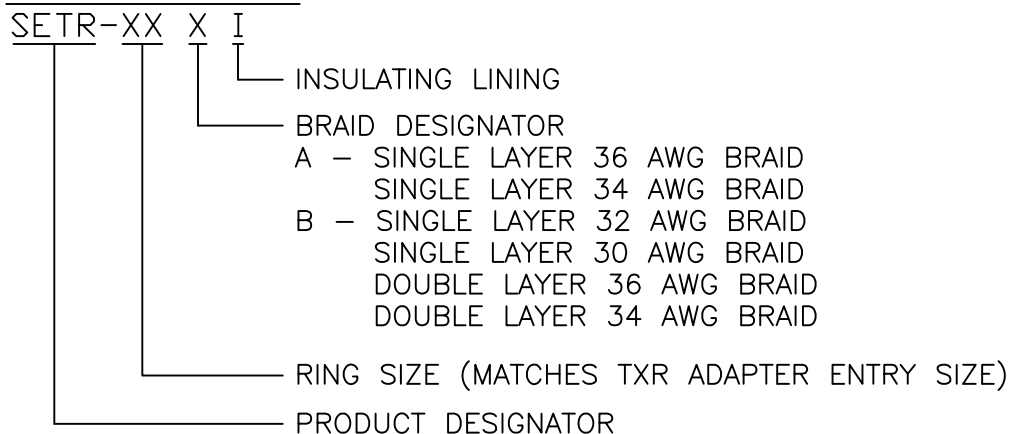
REVISIONS			
LTR	DESCRIPTION	DATE	APPROVED
B	REVISE PER ECO-12-021803	12/12/12	G.WELLS

SCOPE:

THIS SPECIFICATION PROVIDES A DESCRIPTION OF A HEAT SHRINKABLE METAL RING FORMED FROM A ONE PIECE CONSTRUCTION WITH INTERLOCKING ENDS FOR TERMINATING BRAIDED SHIELD ONTO TINEL-LOCK ADAPTERS.



PART DESCRIPTION:



NOTES:

1. MATERIAL: NICKEL-TITANIUM ALLOY
- 2 THE OUTSIDE SURFACE OF THE ASSEMBLED RING IS MARKED WITH TWO STRIPES OF THERMOCHROMIC PAINT WHICH CHANGE COLOR WHEN THE APPROPRIATE INSTALLATION TEMPERATURE IS REACHED.
3. "AI" RINGS ARE IDENTIFIED BY THE ABSENCE OF A RED DOT. REFER TO NOTE 4.
- 4 "BI" RINGS ARE MARKED WITH A RED DOT.
5. REFER TO MIP-104 FOR INSTALLATION PROCEDURE.
6. REFER TO MPS-104 FOR PERFORMANCE REQUIREMENTS.

© 2012 Tyco Electronics. All Rights Reserved.

Raychem Adapters
CUSTOMER DRAWING

UNLESS OTHERWISE SPECIFIED DIMENSIONS ARE INCHES. METRIC DIMENSIONS ARE IN BRACKETS.

DECIMAL TOLERANCES

.XXX ± --	[mm]
.XX ± --	[mm]
.X ± --	[mm]

ANGLE TOLERANCE

.X ± --

DRAWN NIKHIL C	DATE 3/23/12
CHECKED _____	DATE _____
APPROVED K. YEE	DATE 3/28/12
CAD FILE: SETR-XXXX	
THIRD ANGLE PROJECTION	

		TITLE	
		SIDE ENTRY TINEL-LOCK RING	
SIZE A	CAGE CODE: 06090	DWG. NO. SETR-XXXX	REV: B
SCALE: NONE		SHEET 1 OF 2	

TABLE 1

P/N	ØA LATCHED (MIN)	ØA MAX FREE RECOVERED	ØB (REF)	C (REF)
SETR-04AI	.397 [10.08]	.379 [9.63]	.073 [1.85]	.25 [6.35]
SETR-04BI	.416 [10.57]	.398 [10.11]	.073 [1.85]	.25 [6.35]
SETR-06AI	.523 [13.28]	.499 [12.67]	.073 [1.85]	.38 [9.65]
SETR-06BI	.548 [13.92]	.523 [13.28]	.073 [1.85]	.38 [9.65]
SETR-08AI	.650 [16.51]	.620 [15.75]	.073 [1.85]	.50 [12.7]
SETR-08BI	.670 [17.02]	.639 [16.23]	.073 [1.85]	.50 [12.7]
SETR-10AI	.782 [19.86]	.744 [18.90]	.073 [1.85]	.60 [15.24]
SETR-10BI	.802 [20.37]	.763 [19.38]	.073 [1.85]	.60 [15.24]
SETR-12AI	.912 [23.16]	.867 [22.02]	.073 [1.85]	.75 [19.05]
SETR-12BI	.931 [23.65]	.886 [22.50]	.073 [1.85]	.75 [19.05]
SETR-14AI	1.040 [26.42]	.988 [25.10]	.073 [1.85]	.88 [22.35]
SETR-14BI	1.060 [26.92]	1.007 [25.58]	.073 [1.85]	.88 [22.35]
SETR-16AI	1.171 [29.74]	1.111 [28.22]	.073 [1.85]	1.0 [25.4]
SETR-16BI	1.191 [30.25]	1.129 [32.77]	.073 [1.85]	1.0 [25.4]
SETR-18AI	1.301 [33.05]	1.234 [31.34]	.073 [1.85]	1.13 [28.70]
SETR-18BI	1.320 [33.53]	1.252 [31.80]	.073 [1.85]	1.13 [28.70]

Raychem Adapters
CUSTOMER DRAWING



TE Connectivity

DRAWN NIKHIL C	DATE 3/23/12	SIZE A	CAGE CODE: 06090	DWG. NO. SETR-XXXX	REV: B
CAD FILE: SETR-XXX		SCALE: NONE		SHEET 2 OF 2	

X-ON Electronics

Largest Supplier of Electrical and Electronic Components

Click to view similar products for [Circular MIL Spec Strain Reliefs & Adapters](#) category:

Click to view products by [TE Connectivity](#) manufacturer:

Other Similar products are found below :

[896227-000](#) [899170S004](#) [0113-023-000](#) [6000-063-0022](#) [CS6624-000](#) [620AB038Z136](#) [620AS001Z108](#) [620AS038Z112](#) [620AS038Z120](#)
[620AS038Z132](#) [620FB038NF08](#) [620HA038NF09](#) [620HA038NF11](#) [620HA038NF13](#) [620HA038NF25](#) [620HB049NF17](#) [620HS038NF11](#)
[620HS038Z121](#) [620HS042XM19](#) [620HS042XM25](#) [620HS048B17](#) [620MS064NF12](#) [620MS065Z107](#) [620MS065ZNU06](#) [627-123NF21-11](#)
[627-125NF23-6](#) [630J041M06H](#) [630J041M20H](#) [637S010NF0212H](#) [637S010NF0416A](#) [640830-000](#) [659943-000](#) [66241-10A](#) [CW0597-000](#)
[CW0598-000](#) [CW0948-000](#) [CY0122-000](#) [M85049/41-6A W/B](#) [M85049/42-12DS](#) [M85049/47N8](#) [M85049/51-1-14S](#) [M85049/51S16S](#)
[M85049/60-1N16](#) [M85049/60-2G12W](#) [M85049/69-11N](#) [CZ3661-000](#) [D02922-000](#) [70.360.1628.0](#) [703797-000](#) [705825-000](#)