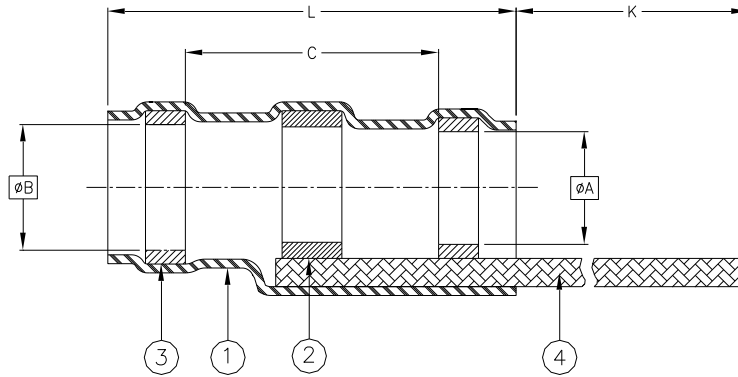


## CUSTOMER DRAWING



Product Name	Product Dimensions					Cable Dimensions		
	$L \pm 1.75$ ( $L \pm 0.070$ )	$\phi A$ min	$\phi B$ min	C min	K min	$\phi D$ max	$\phi E$ min	$J \pm 0.5$ ( $J \pm 0.02$ )
D-104-38	27.90 (1.100)	10.80 (0.425)	11.65 (0.460)	13.35 (0.525)	150.0 (5.90)	10.70 (0.420)	4.40 (0.170)	9.50 (0.375)

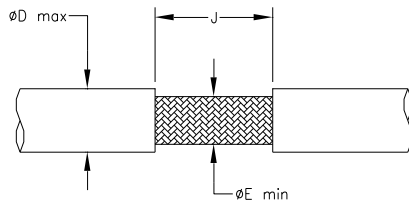
### MATERIALS

1. INSULATION SLEEVE: Heat-shrinkable, transparent blue, radiation cross-linked modified polyvinylidene fluoride.
2. SOLDER PREFORM WITH FLUX:  
SOLDER: TYPE Sn63 per ANSI-J-STD-006.  
FLUX: TYPE ROL0 per ANSI-J-STD-004.
3. MELTABLE RINGS: Thermally stabilized thermoplastic. Color: clear.
4. BRAID STRAP: Tin-Plated copper alloy PD-135 strands. CMA = 1000


### APPLICATION

1. This part is designed to provide an environment protected shield termination on cables, rated for 125°C minimum, meeting the dimensional criteria listed and having tin or silver plated copper shields.
2. Temperature range: -55°C to +150°C.
3. Install using TE Connectivity-approved convection or infrared heating tools in accordance with Raychem process standard RCPS-100-70.

For best results, prepare the cable as shown:



TE Connectivity, TE connectivity (logo), Raychem, and SolderSleeve are trademarks

		<b>Raychem</b>		TITLE: <b>SOLDERSLEEVE DEVICE WITH PRE-INSTALLED BRAID STRAP</b>		
Unless otherwise specified dimensions are in millimeters. [Inches dimensions are shown in brackets]				DOCUMENT NO.: <b>D-104-38</b>		
TOLERANCES: 0.00 N/A 0.0 N/A 0 N/A	ANGLES: N/A  ROUGHNESS IN MICRON	TE Connectivity reserves the right to amend this drawing at any time. Users should evaluate the suitability of the product for their application.		Revision: <b>B</b>	Issue Date: March 2020	
DRAWN BY: P.TALLY	CAGE CODE: 06090	DATE: 08-Dec-06	ECO: ECO-20-003573	SCALE: NTS	SIZE: A	SHEET: 1 of 1

## X-ON Electronics

Largest Supplier of Electrical and Electronic Components

*Click to view similar products for [TE Connectivity](#) manufacturer:*

Other Similar products are found below :

[D38999/24FJ4AN](#) [570416-000](#) [CLTEQ-M81CE-SSRELAY-4-20V](#) [4-1195131-0](#) [650069-000](#) [SMD100-2](#) [358838-000](#) [CB-1022B-78](#)  
[RM707012](#) [RP410012](#) [MMS42](#) [1-640426-8](#) [2EDL4CM](#) [DTS20W19-11PD-3028-LC](#) [RM202615](#) [NC6-P104-06](#) [MSPS103B](#) [DTS26F21-](#)  
[41HE-LC](#) [DTS26F21-41AE](#) [DTS26F21-41PE-LC](#) [DTS26F21-11SE-3028-LC](#) [30DCB6](#) [1932144-1](#) [293545-4](#) [LVR125S](#) [MS27466T25F4PB](#)  
[CKB-38-78010](#) [TR04AI-TINELLOCKRING](#) [1206SFF150F/63-2](#) [D38999/20JB35HA](#) [TE1500A2R2J](#) [D38999/20WC8BB](#) [DTS24F19-11SC-](#)  
[3028-LC](#) [D38999/24WG11HA](#) [D38999/24WG11HN](#) [MS27467T21F11H](#) [DJT16E21-11HA](#) [MS27467T21F35J](#) [MS27467T21F11J](#)  
[MS27467T21F16H-LC](#) [MS27467T21F35H](#) [MS27467T21F41H-LC](#) [1206SFH150F/24-2](#) [RP330024](#) [DJT16E21-11PA-LC](#) [DJT16E21-11HA-](#)  
[LC](#) [DJT16E21-11AA](#) [MS27467T21B11JA](#) [DJT16E21-11JA](#) [MS27467T21B11JA-LC](#)