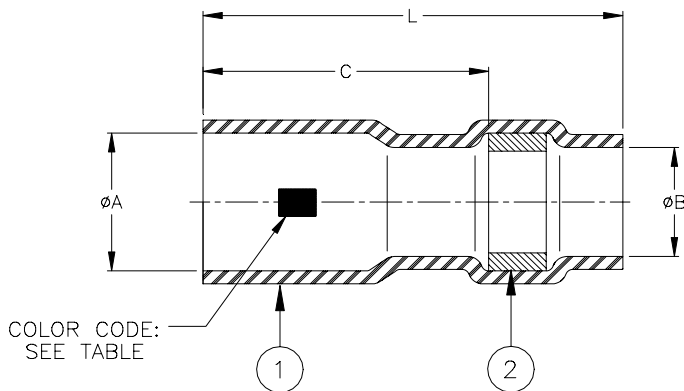


CUSTOMER DRAWING



Product Name	Product Dimensions				Wire Accommodation*		Color Code
	L ±0.50 (L ±0.020)	C min	øA min	øB min	One Wire (AWG)	Two Wires (AWG)	
D-141-0111	6.10 (0.240)	2.80 (0.110)	1.90 (0.075)	0.89 (0.035)	26, 28, 30	30	Red
D-141-0112	6.10 (0.240)	2.80 (0.110)	2.10 (0.083)	1.07 (0.042)	22, 24	26, 28	Blue
D-141-0113	6.10 (0.240)	2.80 (0.110)	2.30 (0.092)	1.27 (0.050)	20	24	Yellow
D-141-0114	6.10 (0.240)	2.80 (0.110)	2.60 (0.103)	1.49 (0.059)	18	22	Green

* Variations in pin/wire geometry may require use of a different size sleeve in some instances.
Consult Tyco Electronics for specific recommendations.

MATERIALS

- INSULATION SLEEVE: Heat shrinkable, transparent blue, radiation cross-linked polyvinylidene fluoride.
- SOLDER PREFORM WITH FLUX:
SOLDER: TYPE Sn63 per ANSI J-STD-006.
FLUX: TYPE ROL1 per ANSI J-STD-004.

APPLICATION

- These parts are designed to attach wires having tin or silver plated stranded conductors to 0.60 (0.025) square wire wrapping posts.
*Wire Accommodation: See table.
- Sleeve is to applied using the following Tyco Electronics tools:
AD-1545 Installation tool plus either:
RH-3900 (115 VAC) Resistance Heater or
RH-3920 (230 VAC) Resistance Heater
- For installation instructions, see Tyco Electronics Procedure RCPS-200-32.

		Tyco Electronics 300 Constitution Dr Menlo Park, CA 94025, U.S.A.		TITLE: SOLDERSLLEEVE TERMINATOR FOR 0.60 X 0.60, 0.025 X 0.025, WIRE WRAPPING POSTS		
		Unless otherwise specified dimensions are in millimeters. [Inches dimensions are shown in brackets]		Raychem Devices		DOCUMENT NO.: D-141-0111/-0114
TOLERANCES: 0.00 N/A 0.0 N/A 0 N/A	ANGLES: N/A ROUGHNESS IN MICRON	Tyco Electronics reserves the right to amend this drawing at any time. Users should evaluate the suitability of the product for their application.			REV: D1	DATE: 18-Jun-08
DRAWN BY: P.TALLY	CAGE CODE: 06090	REPLACES: D010071	ECO NUMBER: 08-015239	SCALE: NTS	SIZE: A	SHEET: 1 of 1

© 2008 Tyco Electronics Corporation. All rights reserved.
If this document is printed it becomes uncontrolled. Check for the latest revision.

X-ON Electronics

Largest Supplier of Electrical and Electronic Components

Click to view similar products for [Solder Sleeves & Shield Tubing](#) category:

Click to view products by [TE Connectivity](#) manufacturer:

Other Similar products are found below :

[899170-000](#) [620040N001](#) [620069N003](#) [CTA-0050-01](#) [629624-000](#) [6500750004](#) [6501390002](#) [CX0781-000](#) [696396-000](#) [697080-000](#) [D-150-0331CS2902](#) [D-181-1222-90/9CS2800](#) [D-300-01CS1108](#) [715325N001](#) [908357N001](#) [982127-1](#) [D-436-0182CS246](#) [D-436-37CS2651](#) [D-436-61CS246](#) [D-436-82-CS2621](#) [D-659-0087](#) [E53797N001](#) [CB0213-000](#) [CB0219-000](#) [S200-2-01](#) [S200-4-00CS2904](#) [LSS-81-16AA-CS5575](#) [ST18-2-00](#) [FLX40-020-04-CS8651](#) [325534-000](#) [CTA-0025](#) [D-108-07CS436](#) [D-128-0010](#) [D-141-0108CS404](#) [D-144-41CS1371](#) [D-150-0231-NRCS2896](#) [D-150-1011](#) [395947-000](#) [427243N001](#) [B-801-18-01](#) [515-9](#) [C67137-000](#) [CB0220-000](#) [D-436-0185CS1102](#) [D-436-36CS2908](#) [D-436-37CS2908](#) [D-436-52CS246](#) [D44133N001](#) [LSS-26-8A](#) [626168-000](#)