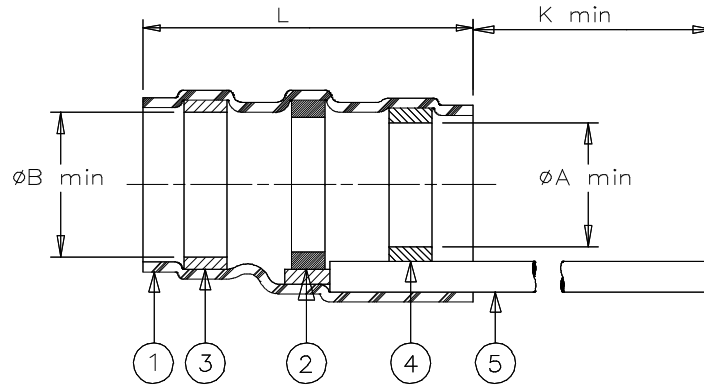


CUSTOMER DRAWING



Product Name	Product Dimensions				Cable Dimensions		
	L max	A min	B min	K min	D max	E min	J±0.5 (J±0.02)
D-142-84	17.25 (0.680)	2.70 (0.105)	3.10 (0.125)	150 (5.900)	2.70 (0.105)	0.9 (0.035)	7 (0.275)
D-142-85	17.25 (0.680)	4.30 (0.170)	5.00 (0.200)	150 (5.900)	4.30 (0.170)	1.9 (0.075)	7 (0.275)
D-142-86	20.5 (0.805)	6.90 (0.275)	7.60 (0.300)	150 (5.900)	6.90 (0.270)	3.56 (0.140)	7 (0.275)

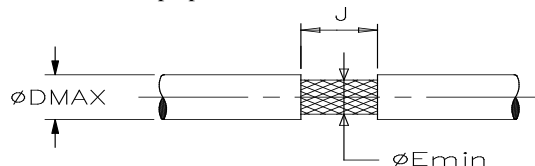
MATERIAL

1. INSULATION SLEEVE: Heat-shrinkable, radiation cross-linked modified polyvinylidene fluoride. Transparent clear.
2. SOLDER PREFORM WITH FLUX:
SOLDER: TYPE Cd18 per ANSI J-STD-006.
FLUX: TYPE ROL0 per ANSI J-STD-004.
3. MELTABLE RING: Thermally stabilized thermoplastic. Color: blue black.
4. MELTABLE RING: Thermally stabilized thermoplastic. Color: grey.
5. GROUND LEAD: RAYCHEM 55A0111-20 in accordance with MIL-W-22759/32 AWG 20 stranded tin plated copper. Color: white.


APPLICATION

1. These parts are designed to provide an environment protected shield termination on cables, rated for 105°C minimum, meeting the dimensional criteria listed and having tin or silver plated shields.
2. Temperature range: -55°C to +125°C.
3. Install using TE Connectivity-approved convection or infrared heating tools in accordance with Raychem process standard RCPS-100-70.

For best results, prepare the cable as shown:



TE Connectivity, TE connectivity (logo), Raychem, Thermofit, and SolderSleeve are trademarks

		Raychem THERMOFIT DEVICES	TITLE: SOLDERSLEEVE DEVICE WITH PRE-INSTALLED LEAD LOW TEMPERATURE			
UNLESS OTHERWISE SPECIFIED DIMENSIONS ARE IN MILLIMETERS. INCHES DIMENSIONS ARE BETWEEN BRACKETS.			DOCUMENT NO D-142-8X			
TOLERANCES: 0.00 N/A 0.0 N/A 0 N/A	ANGLES: N/A ROUGHNESS IN MICRON	TE Connectivity reserves the right to amend this drawing at any time. Users should evaluate the suitability of the product for their application.	Revision: 5		Issue Date: March 2020	
DRAWN BY: R. MAPALO	DATE: 06/01/98	ECO: ECO-20-003573	SCALE:. NONE	SIZE: A	SHEET: 1 of 1	

Print Date: 18-Mar-20 If this document is printed it becomes uncontrolled. Check for the latest revision.

X-ON Electronics

Largest Supplier of Electrical and Electronic Components

Click to view similar products for [Solder Sleeves & Shield Tubing](#) category:

Click to view products by [TE Connectivity](#) manufacturer:

Other Similar products are found below :

[899170-000](#) [620040N001](#) [620069N003](#) [CTA-0050-01](#) [629624-000](#) [6500750004](#) [6501390002](#) [CX0781-000](#) [696396-000](#) [697080-000](#) [D-150-0331CS2902](#) [D-181-1222-90/9CS2800](#) [D-300-01CS1108](#) [715325N001](#) [908357N001](#) [982127-1](#) [D-436-0182CS246](#) [D-436-37CS2651](#) [D-436-61CS246](#) [D-436-82-CS2621](#) [D-659-0087](#) [E53797N001](#) [CB0213-000](#) [CB0219-000](#) [S200-2-01](#) [S200-4-00CS2904](#) [LSS-81-16AA-CS5575](#) [ST18-2-00](#) [FLX40-020-04-CS8651](#) [325534-000](#) [CTA-0025](#) [D-108-07CS436](#) [D-128-0010](#) [D-141-0108CS404](#) [D-144-41CS1371](#) [D-150-0231-NRCS2896](#) [D-150-1011](#) [395947-000](#) [427243N001](#) [B-801-18-01](#) [515-9](#) [C67137-000](#) [CB0220-000](#) [D-436-0185CS1102](#) [D-436-36CS2908](#) [D-436-37CS2908](#) [D-436-52CS246](#) [D-436-83CS2705](#) [D44133N001](#) [LSS-26-8A](#)