

REV	DESCRIPTION	DATE	DWN	APR
A	NEW DRAWING PER ECO-14-007060	13MAY2014	NK	RH

BCD CODE 131

POS	#	1	2	3	4	5	6	7	8	9
C	X	X	X	X	X	X	X	X	X	X
1		X	X		X	X		X		X
2			X	X		X	X			
4				X	X	X	X			
8								X	X	

HEXADECIMAL CODE 3#1

POS	#	1	2	3	4	5	6	7	8	9	A	B	C	D	E	F
C	X	X	X	X	X	X	X	X	X	X	X	X	X	X	X	X
1		X	X	X	X	X	X	X	X	X	X	X	X	X	X	X
2			X	X		X	X		X	X		X	X		X	X
4				X	X	X	X				X	X	X	X		X
8								X	X	X	X	X	X	X	X	X

BCD COMPLEMENT CODE 137

POS	#	1	2	3	4	5	6	7	8	9
C	X	X	X	X	X	X	X	X	X	X
1	X	X	X	X	X	X	X	X	X	X
2	X	X		X	X		X	X		X
4	X	X	X						X	X
8	X	X	X	X	X	X	X	X		

HEXADECIMAL COMPLEMENT CODE 3#7

POS	#	1	2	3	4	5	6	7	8	9	A	B	C	D	E	F
C	X	X	X	X	X	X	X	X	X	X	X	X	X	X	X	X
1	X	X	X	X	X	X	X	X	X	X	X	X	X	X	X	X
2	X	X		X	X		X	X		X	X		X	X		X
4	X	X	X						X	X	X					X
8	X	X	X	X	X	X	X	X	X	X	X	X	X	X	X	X

BCD PLUS BCD COMPLEMENT CODE 141

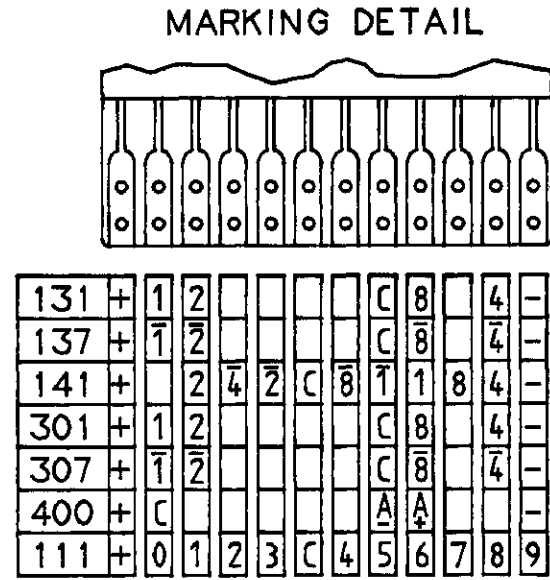
POS	#	1	2	3	4	5	6	7	8	9
C	X	X	X	X	X	X	X	X	X	X
1	X	X		X	X		X	X		X
2	X	X		X	X		X	X		X
4	X	X	X						X	X
8	X	X	X	X	X	X	X	X		
C	X	X	X	X	X	X	X	X	X	X
1	X	X	X	X	X	X	X	X	X	X
2		X	X		X	X		X	X	
4			X	X	X	X				X
8							X	X	X	X

DECIMAL CODE 111

POS	#	1	2	3	4	5	6	7	8	9
C	X	X	X	X	X	X	X	X	X	X
1	X									
2		X								
3			X							
4				X						
5					X					
6						X				
7							X			
8								X		
9									X	

CHANGE OVER SWITCH CODE 4#8

POS	C	A+	A-
+	X	X	
-	X		X
+	X	X	
-	X		X
+	X	X	
-	X		X
+	X	X	
-	X		X
+	X	X	
-	X		X

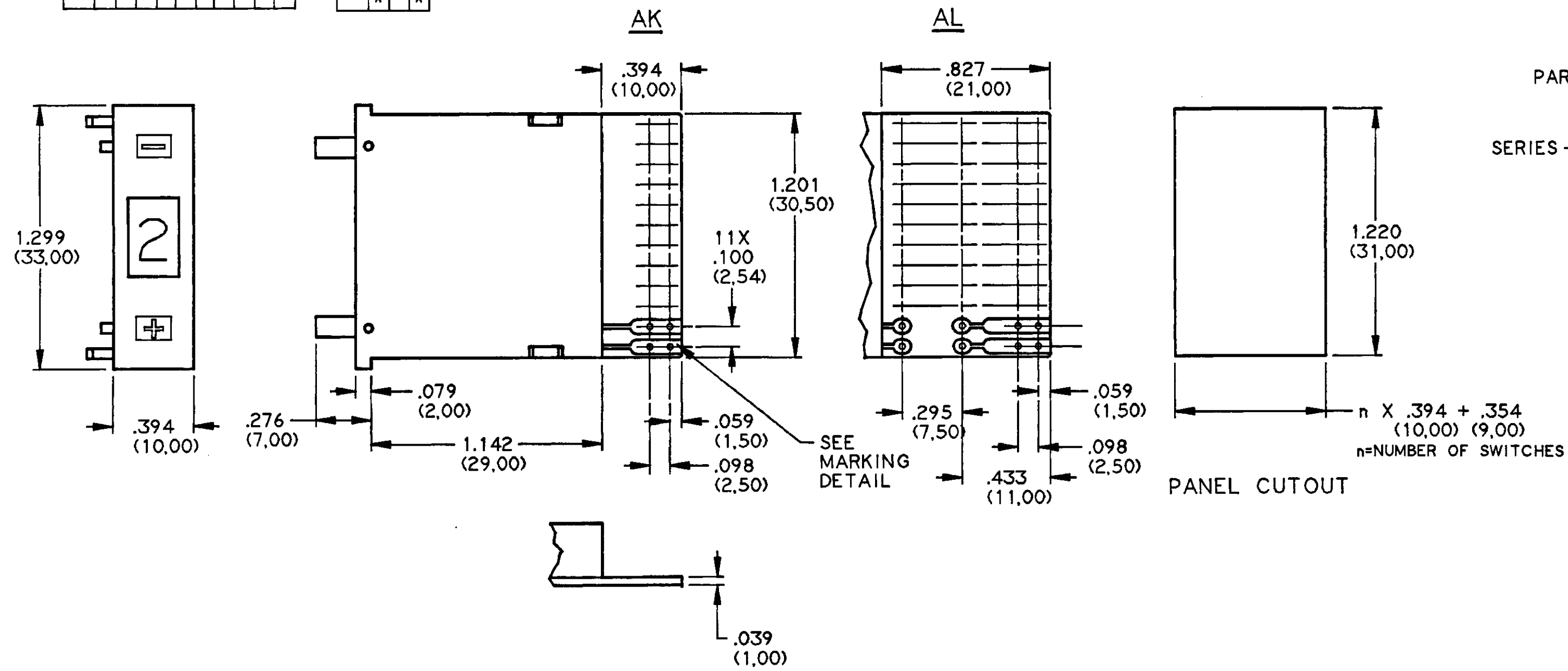


SPECIFICATIONS:

- CONTACT RATING: GOLD 0.4 VA @ 20 VDC OR AC.
- CONTACT CIRCUIT RESISTANCE: 0.20 OHM MAXIMUM.
- MECHANICAL LIFE: MORE THAN 10⁶ OPERATIONS.
- OPERATING TEMPERATURE: -20°C TO +80°C.
- ACTUATION FORCE: APPROX. 16 oz

MATERIALS:

HOUSING: HIGH TEMPERATURE THERMOPLASTIC RESIN
 BLACK MATTE FINISH
 PC BOARD: FR4 GLASS EPOXY
 PC BOARD CONTACTS AND TERMINALS: GOLD OVER NICKEL ON COPPER
 MOVING CONTACTS: GOLD OVER NICKEL ON COPPER ALLOY
 WINDOW: THERMOPLASTIC RESIN
 CHARACTER COLOR: WHITE ON BLACK BACKGROUND
 CHARACTER HEIGHT: 10/16 DIGIT .276 (7,00)/.169 (4,30)



PART NUMBER SEQUENCE

DPS10***A**

SERIES ——— TYPE: AK AL

CODE: 111
 131
 137
 141
 301
 307
 400

UNLESS OTHERWISE SPECIFIED DIMENSIONS ARE IN INCH TOLERANCES PER DIN 7168					THIRD ANGLE PROJECTION	UNLESS OTHERWISE SPECIFIED DIMENSIONS ARE IN INCHES DO NOT SCALE PRINT			ORIGINAL DATE OF DRAWING: 10/9/92	TE Connectivity	
GREATER THAN	.020 (0,50)	.236 (6,00)	1.181 (30,00)	4.724 (120,00)		12.402 (315,00)	DATABASE 81035	MAINCELL 81035	LIBRARY		DRAWN: C. MORAN
LESS THAN	.236 (6,00)	1.181 (30,00)	4.724 (120,00)	12.402 (315,00)	39.370 (1000,00)	MATERIAL: SEE SPECIFICATIONS ABOVE			CHECKED:	DATE:	DWG. NO. C-1437603-2
	±.004 (±0,10)	±.008 (±0,20)	±.012 (±0,30)	±.020 (±0,50)	±.031 (±0,80)	FINISH:			APPROVED: <i>N. S. Kishan</i>	DATE: 11/10/92	REV. A
									CODE IDENT. NO. 91506	DWG. SIZE C	PRODUCT CODE: H13
									NEXT ASSY:		SCALE: 2/1 SHEET 1 OF 1

X-ON Electronics

Largest Supplier of Electrical and Electronic Components

Click to view similar products for [Thumbwheel Switches & Pushwheel Switches](#) category:

Click to view products by [TE Connectivity](#) manufacturer:

Other Similar products are found below :

[PICOD131ALULS2](#) [A7SS-107-PM](#) [DGAN-031-B](#) [1437603-2](#) [DPS10131AL2](#) [DPS10301AK](#) [DPS8111AK](#) [DPS8137AK2](#) [1437603-7](#) [A7M-1P](#) [B5LS](#) [B5LS](#) [3-1437603-8](#) [DGBN-036-B](#) [DPS10131AK](#) [DPS910A2](#) [1-1437602-8](#) [SH6G137AKLS2](#) [1-1437603-1](#) [SMCL2](#)
[SMCD137AK](#) [SP1.5](#) [DPS8111AK2](#) [TW01RED14](#) [TW01BLK14](#) [84212014](#) [84212013](#) [HTWF-1A12A21](#) [301419100](#) [302109002](#)
[302329N00](#) [311100001](#) [312100100](#) [312300000](#) [332300003](#) [337100000](#) [342300001](#) [311100000](#) [312100000](#) [313100000](#) [313110003](#)
[321400100](#) [322300000](#) [323100000](#) [332100100](#) [333100110](#) [347100000](#) [301119000](#) [303109101](#) [332710P00](#)