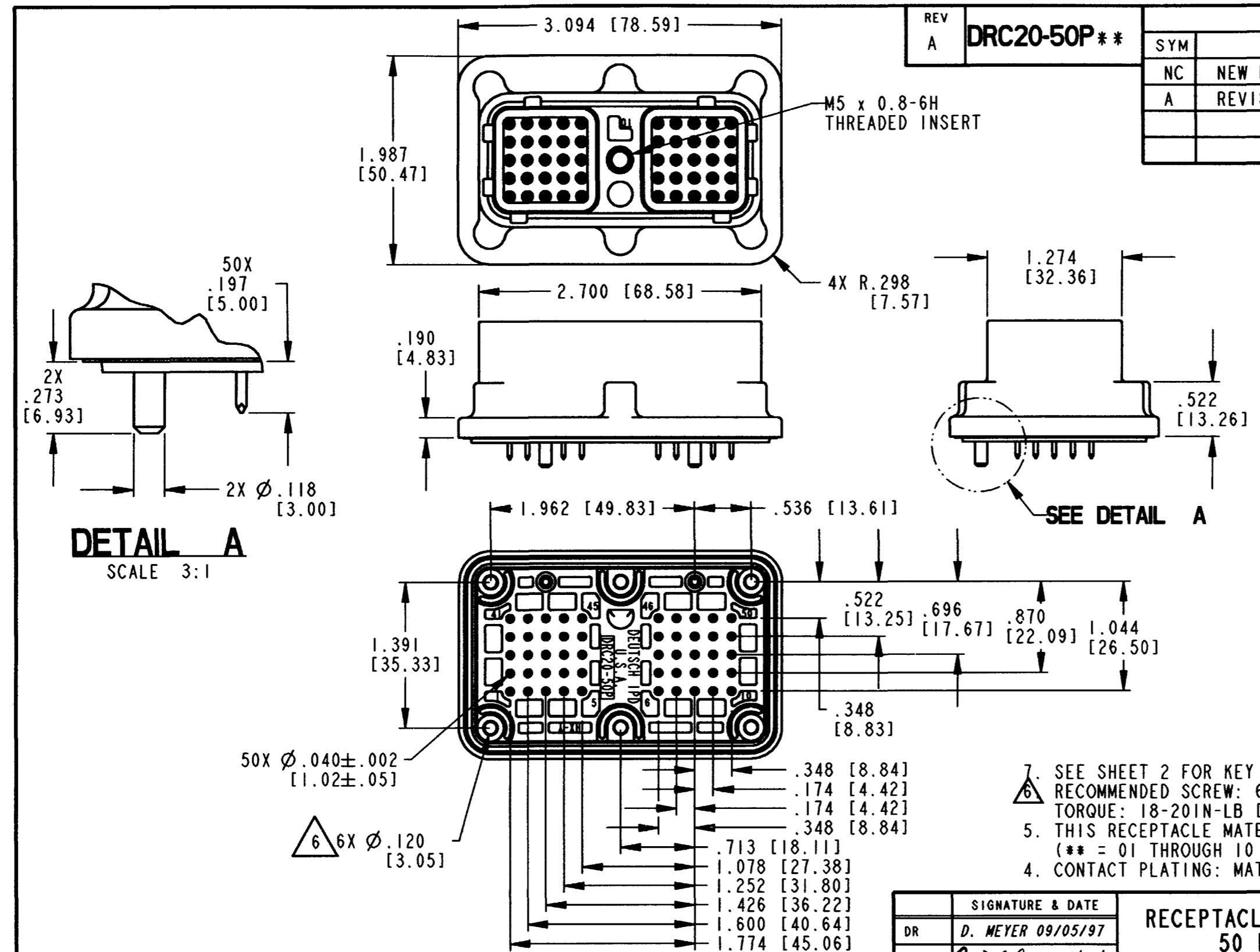


REV  
A DRC20-50P\*\*

REVISIONS			
SYM	DESCRIPTION	DATE	APPROVED
NC	NEW RELEASE PER E.O. P15419	9-15-97	RDR
A	REVISED PER E.O. P 18554	9-15-09	RDR



NOTES:  
 1. DIMENSIONS ARE IN INCHES [mm].  
 2. DIMENSION TOLERANCE: ±.025 [.64]; PANEL CUTOUT: ±.010 [.25].  
 3. MATERIAL - PLASTIC (BLACK), INSERT - STEEL, SEALS - RUBBER.  
 UNLESS OTHERWISE SPECIFIED.

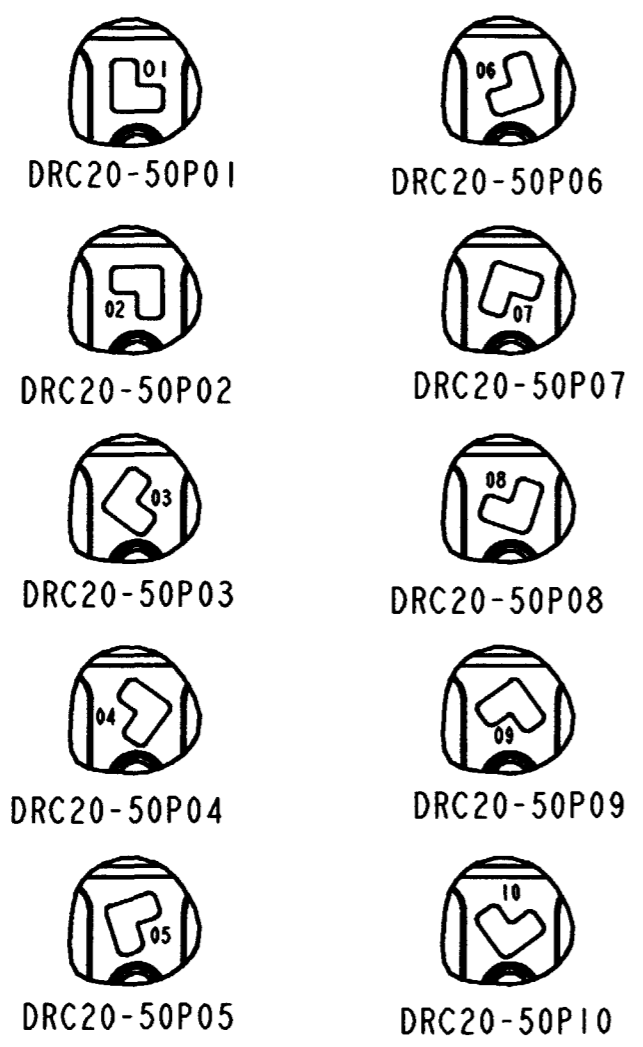
SIGNATURE & DATE	
DR	D. MEYER 09/05/97
CHK	<i>David C. Spitzer</i> 1/13/09
PE	<i>Vladimir Tomsic</i> APR-12-04
APPD	<i>D. Meyer</i> 1/12/04
SCALE	NONE

RECEPTACLE, PCB MOUNT  
 50 PIN #20  
 KEYING 01-10  
 DRC SERIES  
 ENVELOPE

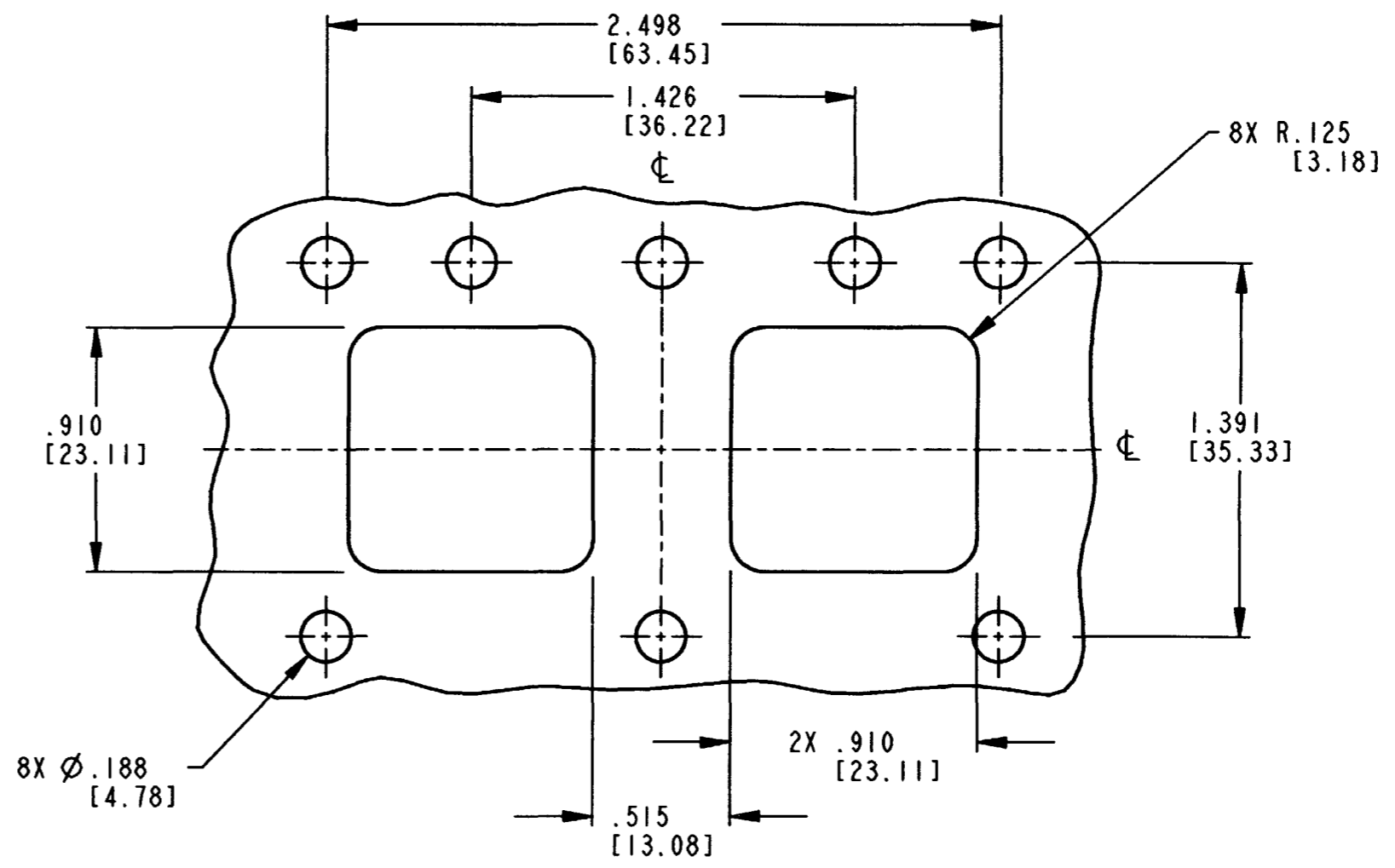
CP	MATL. CODE
<b>The Deutsch Company</b> DEUTSCH I.P.D. 3850 INDUSTRIAL AVE. HEMET, CALIF. 92545	
<b>B DRC20-50P**</b>	
DWG SIZE	CODE 11139 SHEET 1 OF 2

REV  
A **DRC20-50P\*\***

REVISIONS			
SYM	DESCRIPTION	DATE	APPROVED
	SEE SHEET 1	4-13-04	RDR



\*\* = KEYING ARRANGEMENTS



**RECOMMENDED PANEL CUTOUT**

THICKNESS: .080 [2.0]

NOTES:

SIGNATURE & DATE		RECEPTACLE, PCB MOUNT 50 PIN #20 KEYING 01-10 DRC SERIES	CP	MATL. CODE	
DR	D. MEYER 09/05/97		The Deutch Company DEUTSCH I.P.D. 3850 INDUSTRIAL AVE. HEMET, CALIF. 92545		
CHK	<i>James C. Gentry 4/13/04</i>		<b>B</b> DRC20-50P**	DWG SIZE	CODE
PE	<i>Wladimir Tomor APR-12-04</i>			1130	SHEET 2 OF 2
APPD	<i>D. Meyer 4/12/04</i>	ENVELOPE			
SCALE	NONE				

## X-ON Electronics

Largest Supplier of Electrical and Electronic Components

*Click to view similar products for [Automotive Connectors](#) category:*

*Click to view products by [TE Connectivity](#) manufacturer:*

Other Similar products are found below :

[003-018-000](#) [60403001](#) [60993906-B](#) [M902-2131](#) [M902-2161](#) [M902-2344](#) [72.330.1035.1](#) [73.353.4028.0](#) [F119300-B](#) [F166900](#) [F258300-B](#)  
[F358300-B](#) [F407400](#) [F444110](#) [F487000](#) [F509500B-B](#) [827153-1](#) [8N1515-32-24P](#) [9-1326729-8](#) [925474-1](#) [928905-1](#) [964562-4](#) [968782-1](#)  
[GT17SA-8DS-HU](#) [98891-1012](#) [98947-1016](#) [12004147](#) [12004475-L](#) [12010290](#) [12010309-B](#) [12015454](#) [12020219-B](#) [12041318-B](#) [12052225-](#)  
[L](#) [12052466](#) [12064869](#) [12004327-B](#) [12015308](#) [12015384](#) [12015909](#) [1-21030-1](#) [12041254](#) [12041318](#) [12047946-B](#) [12047957](#) [12047957-L](#)  
[12059473](#) [12066261](#) [12110546](#) [12110546-B](#)