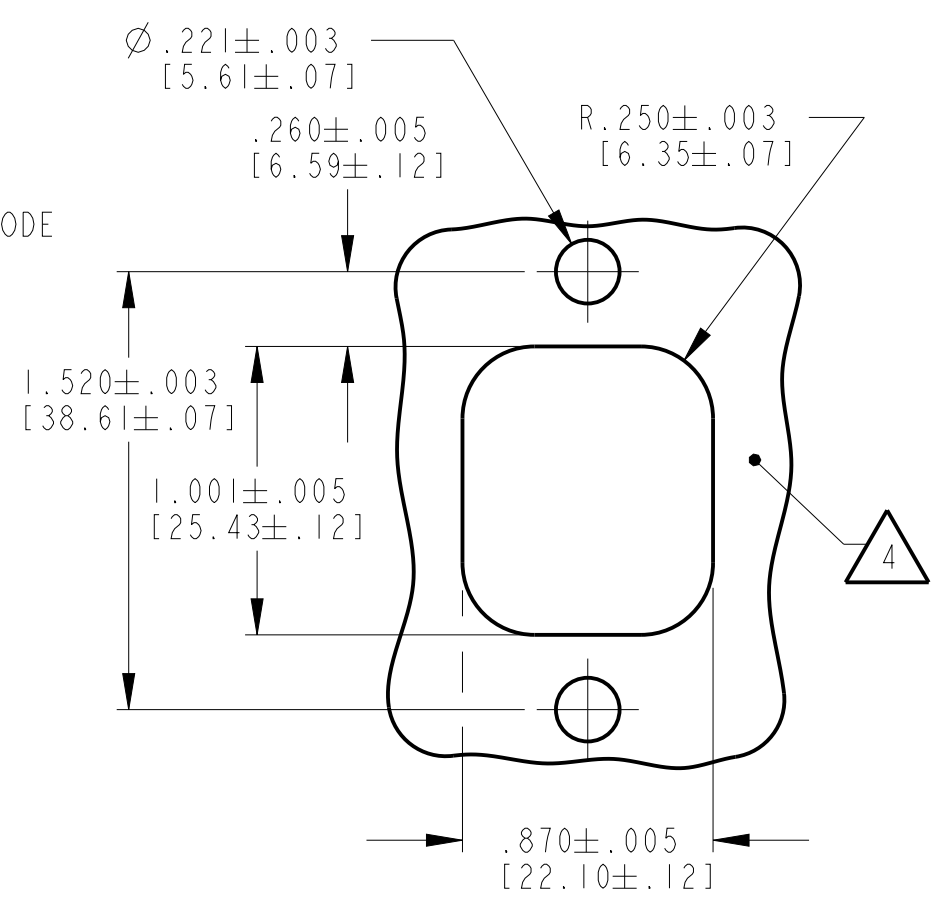
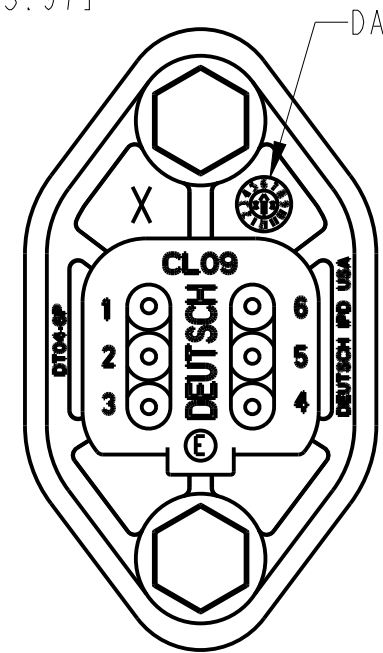
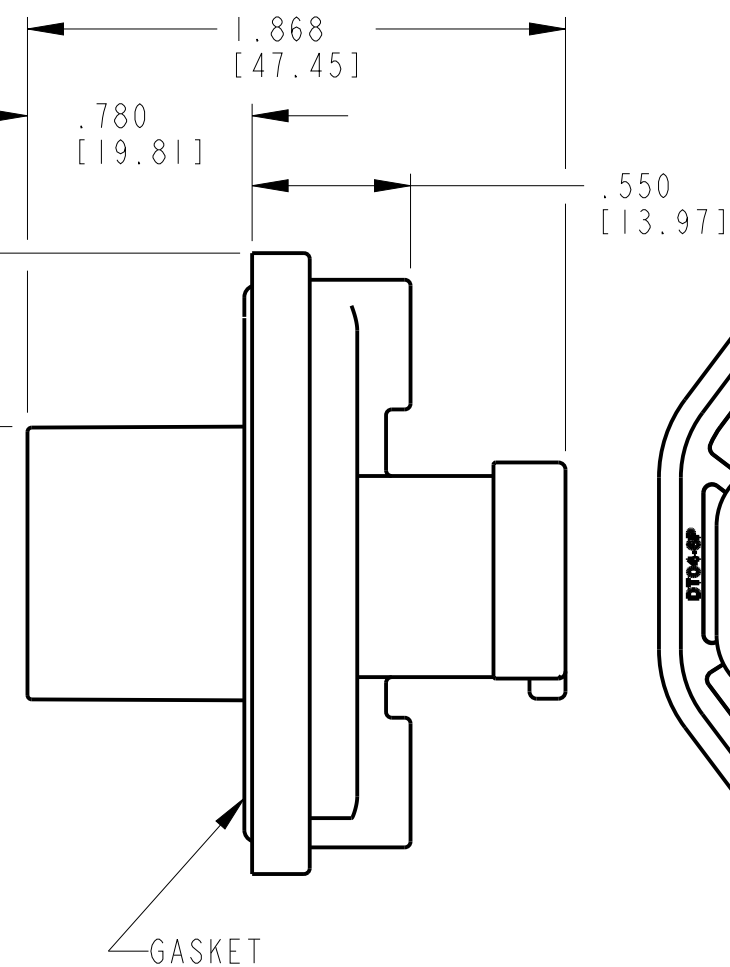
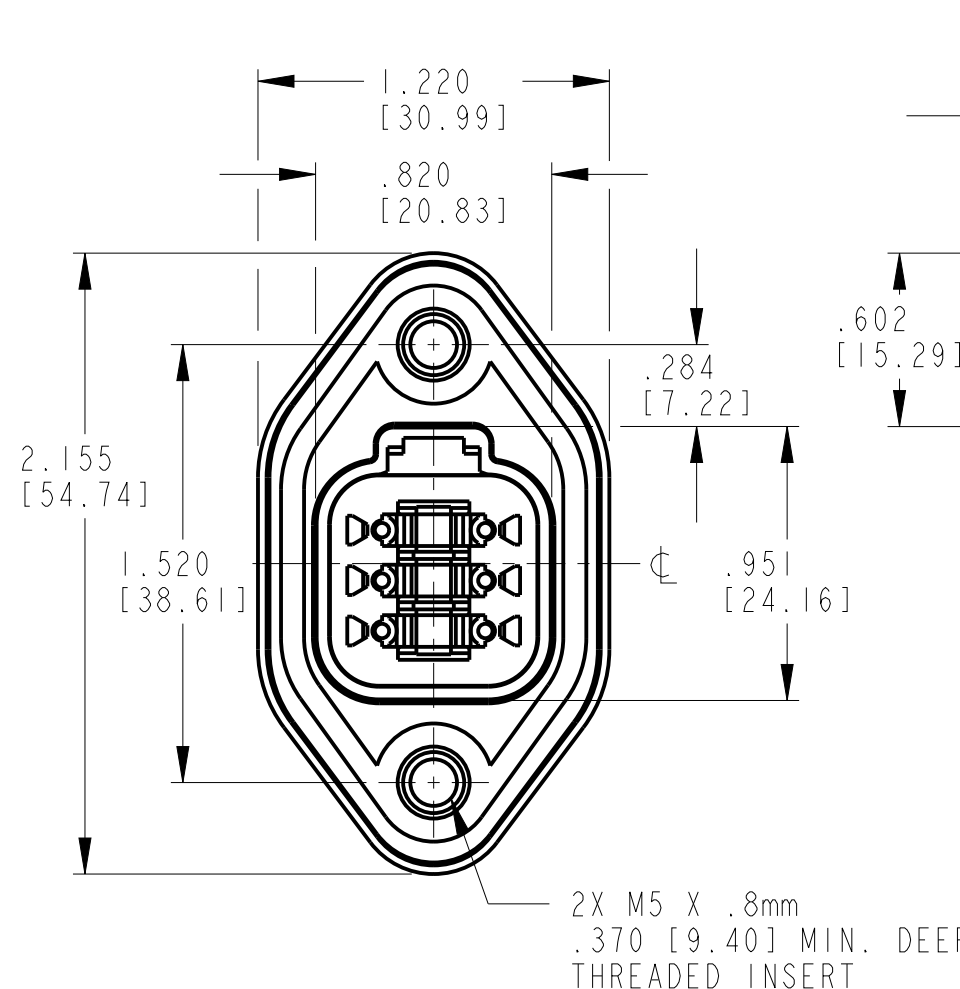


THIS DRAWING IS UNPUBLISHED. RELEASED FOR PUBLICATION 2014  
 © COPYRIGHT 2014 BY TE CONNECTIVITY ALL RIGHTS RESERVED.

LOC	DIST	REVISIONS			
P	LTR	DESCRIPTION	DATE	DWN	APVD
	NC	NEW RELEASE PER E.O. PI8957	9-1-05	TY	RDR
	A	REVISED PER E.O. PI9429	12-11-06	TY	RDR
	B	REVISED PER E.O. P20013	9-26-08	TY	DM
	BI	REVISED PER ECO-14-005851	4-17-14	JA	DM



RECOMMENDED MOUNTING DETAIL

CONTACT SIZE	MIN. INSUL O.D.	MAX. INSUL O.D.	WIRE RANGE [mm <sup>2</sup> ] REF ONLY
16	.053 [1.34]	.120 [3.04]	14-20 AWG [2.0-0.5]

5. RECOMMENDED TORQUE VALUE FOR SCREW: 19±2 IN-LB [2.15±.23 N-m].

4 INTERNAL SEALING SURFACE FINISH TO BE  $\nabla_{32}$  OR BETTER  $\square .005 [ .13 ]$ .

3. CONNECTOR MATERIAL IS BLACK PLASTIC; SEAL AND GASKET ARE RUBBER; INSERT IS STAINLESS STEEL.

2. THIS RECEPTACLE MATES WITH DT06-6S-\*\*\*\* PLUG AND UTILIZES W6P WEDGE LOCK. (\*\*\*\* = ALL MODIFICATIONS) CONSULT FACTORY FOR MODIFICATIONS.

1 FOR CONTACTS AND WIRE PERFORMANCE AND APPLICATION CHARACTERSTICS, SEE ENVELOPE DRAWINGS 0425-015-0000 AND 0425-017-0000.

NOTES:

THIS DRAWING IS A CONTROLLED DOCUMENT.		DWN 07APR2014 JAIME C. APOSTOL	TE Connectivity	
DIMENSIONS: INCHES [mm]		CHK 17APR2014 RUSSELL MESSENGER		
TOLERANCES UNLESS OTHERWISE SPECIFIED:		APVD 17APR2014 DAVID MEYER	NAME 6 WAY RECEPTACLE WITH REDUCED WIRE SEAL DT SERIES	
0 PLC ± 1 PLC ± 2 PLC ± 3 PLC ±.025 [.64] 4 PLC ± ANGLES ±0°30'0"		PRODUCT SPEC	SIZE A3 CAGE CODE 4AFU8 DRAWING NO. DT04-6P-CL09 RESTRICTED TO -	
MATERIAL		APPLICATION SPEC	SCALE	
FINISH		WEIGHT 25.75g	SHEET OF REV BI	
		CUSTOMER DRAWING		

## X-ON Electronics

Largest Supplier of Electrical and Electronic Components

*Click to view similar products for [Automotive Connectors](#) category:*

*Click to view products by [TE Connectivity](#) manufacturer:*

Other Similar products are found below :

[003-018-000](#) [60403001](#) [60993906-B](#) [M902-2131](#) [M902-2161](#) [72.330.1035.1](#) [73.353.4028.0](#) [F119300-B](#) [F166900](#) [F258300-B](#) [F358300-B](#)  
[F407400](#) [F444110](#) [F487000](#) [F509500B-B](#) [827153-1](#) [8N1515-32-24P](#) [9-1326729-8](#) [925474-1](#) [928905-1](#) [964562-4](#) [968782-1](#) [GT17SA-8DS-](#)  
[HU](#) [98891-1012](#) [98947-1016](#) [12004147](#) [12004475-L](#) [12010290](#) [12010309-B](#) [12015454](#) [12020219-B](#) [12020308](#) [12041318-B](#) [12052225-L](#)  
[12052466](#) [12059125](#) [12064869](#) [12004327-B](#) [12010503-B](#) [12015308](#) [12015384](#) [12015909](#) [1-21030-1](#) [12041254](#) [12041318](#) [12047946-B](#)  
[12047957](#) [12047957-L](#) [12059473](#) [12066261](#)