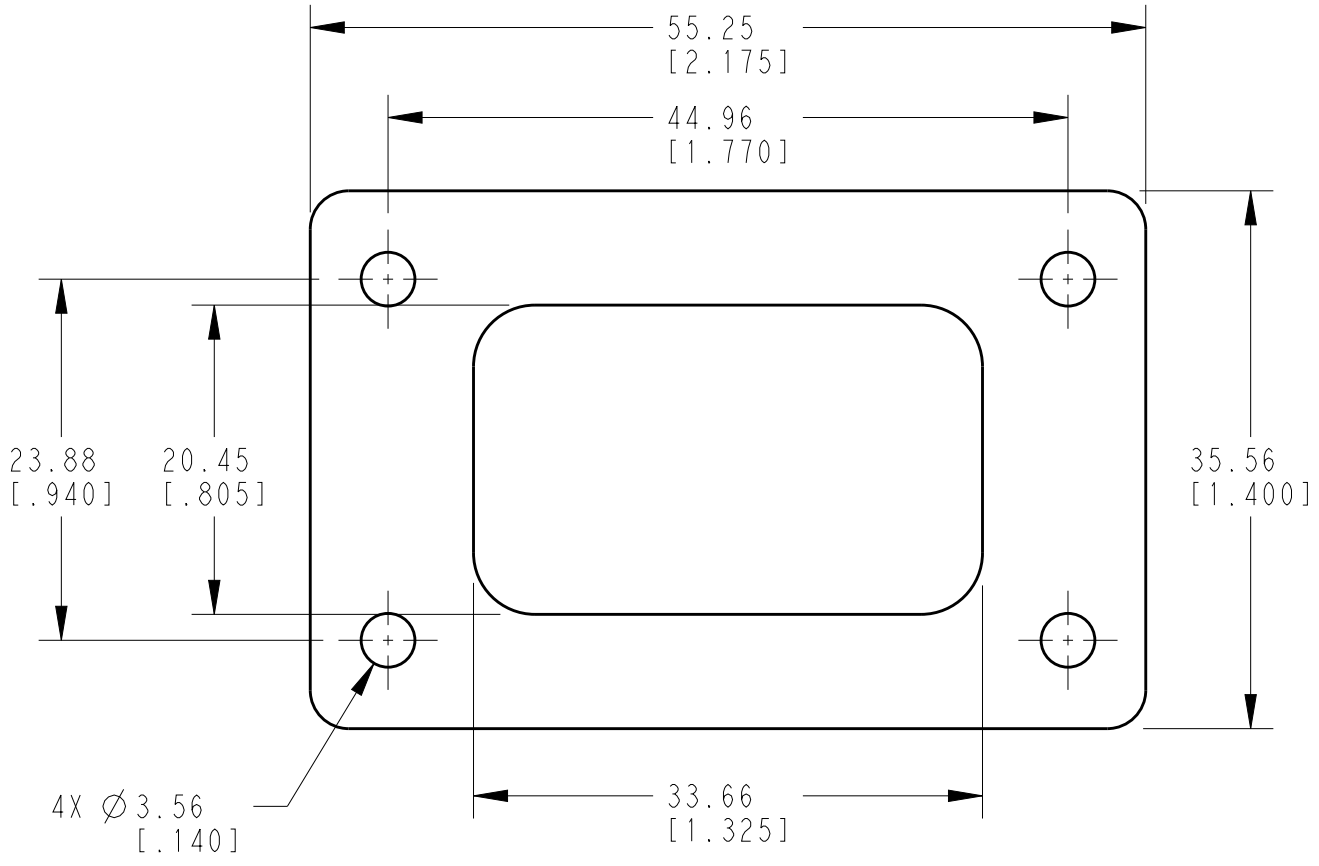


LOC	DIST	REVISIONS					
		P	LTR	DESCRIPTION	DATE	DWN	APVD
			A	NEW RELEASE PER ECO-14-008764	27JUN2014	DM	DM
			A1	REVISED PER ECO-16-013409	12SEP2016	JA	DM



5. THIS ACCESSORY PART IS PROVIDED WITHOUT TYPICAL TRANSPORTATION INDUSTRY PROCESS CONTROLS. NO VALIDATION TESTING HAS BEEN PERFORMED. CUSTOMER IS RESPONSIBLE FOR DETERMINING PRODUCT PERFORMANCE AND SUITABILITY FOR APPLICATION.
4. THICKNESS: 3.18 [.125].
3. PART NO. DT12-L012-GKT
2. TEMPERATURE RATING: -57°C TO +107°C [-70°F TO +225°F).
1. THIS PART IS USED ON DT04-12PX-L012 AND DTM04-12PX-L012 (X = A, B, C, D KEYS) RECEPTACLES.

2016
 RELEASED FOR PUBLICATION
 ALL RIGHTS RESERVED.
 BY TE CONNECTIVITY
 COPYRIGHT 2014
 THIS DRAWING IS UNPUBLISHED.

DIMENSIONS: mm [INCH]	DWN D.MEYER 27JUN2014	MATERIAL CLD CELL SPONGE	FINISH
	CHK R.MESSENGER 27JUN2014		
TOLERANCES UNLESS OTHERWISE SPECIFIED: 0 PLC ± 1 PLC ± 2 PLC ±0.63 [.025] 3 PLC ± 4 PLC ± ANGLES ±0° 30' 0"	APVD D.MEYER 27JUN2014		
	PRODUCT SPEC	SIZE A 4	CAGE CODE 4AFU8
	APPLICATION SPEC	DRAWING NO DT12-L012-GKT	RESTRICTED TO
	WEIGHT 0.91g	CUSTOMER DRAWING	
		SCALE 2:1	SHEET 1 OF 1
		REV A1	

X-ON Electronics

Largest Supplier of Electrical and Electronic Components

Click to view similar products for [Automotive Connectors](#) category:

Click to view products by [TE Connectivity](#) manufacturer:

Other Similar products are found below :

[003-018-000](#) [60403001](#) [60993906-B](#) [M902-2131](#) [M902-2161](#) [M902-2344](#) [72.330.1035.1](#) [73.353.4028.0](#) [F119300-B](#) [F166900](#) [F258300-B](#)
[F358300-B](#) [F407400](#) [F444110](#) [F487000](#) [F509500B-B](#) [827153-1](#) [8N1515-32-24P](#) [9-1326729-8](#) [925474-1](#) [928905-1](#) [964562-4](#) [968782-1](#)
[GT17SA-8DS-HU](#) [98891-1012](#) [98947-1016](#) [12004147](#) [12004475-L](#) [12010290](#) [12015454](#) [12020219-B](#) [12041318-B](#) [12052225-L](#) [12052466](#)
[12064869](#) [12004327-B](#) [12015308](#) [12015384](#) [12015909](#) [1-21030-1](#) [12041254](#) [12041318](#) [12047946-B](#) [12047957](#) [12047957-L](#) [12059473](#)
[12066261](#) [12110546](#) [12110546-B](#) [12131792](#)