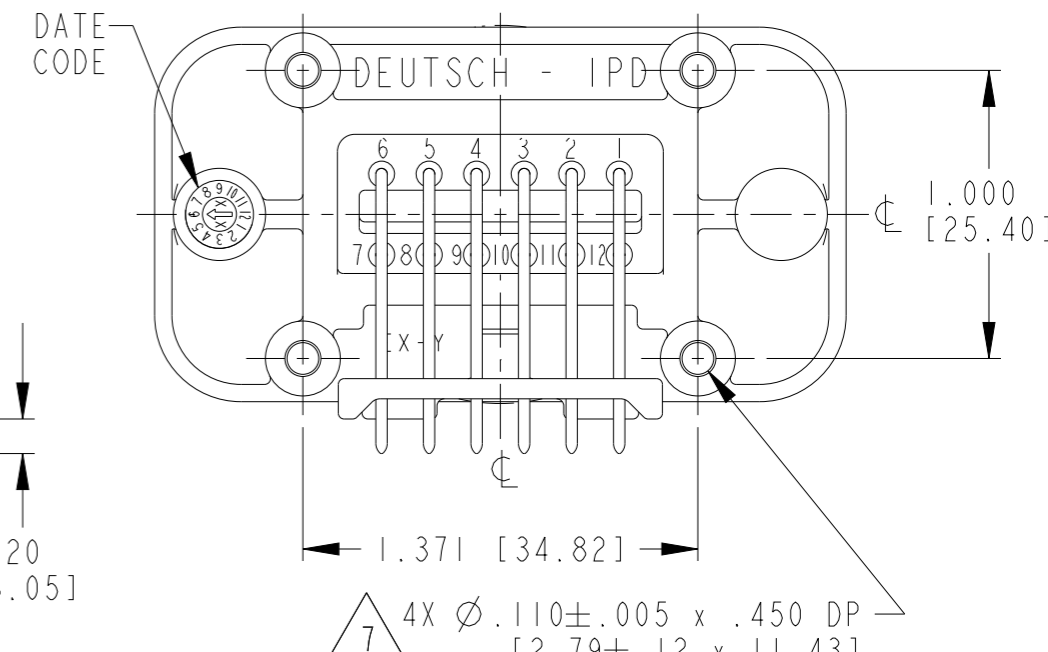
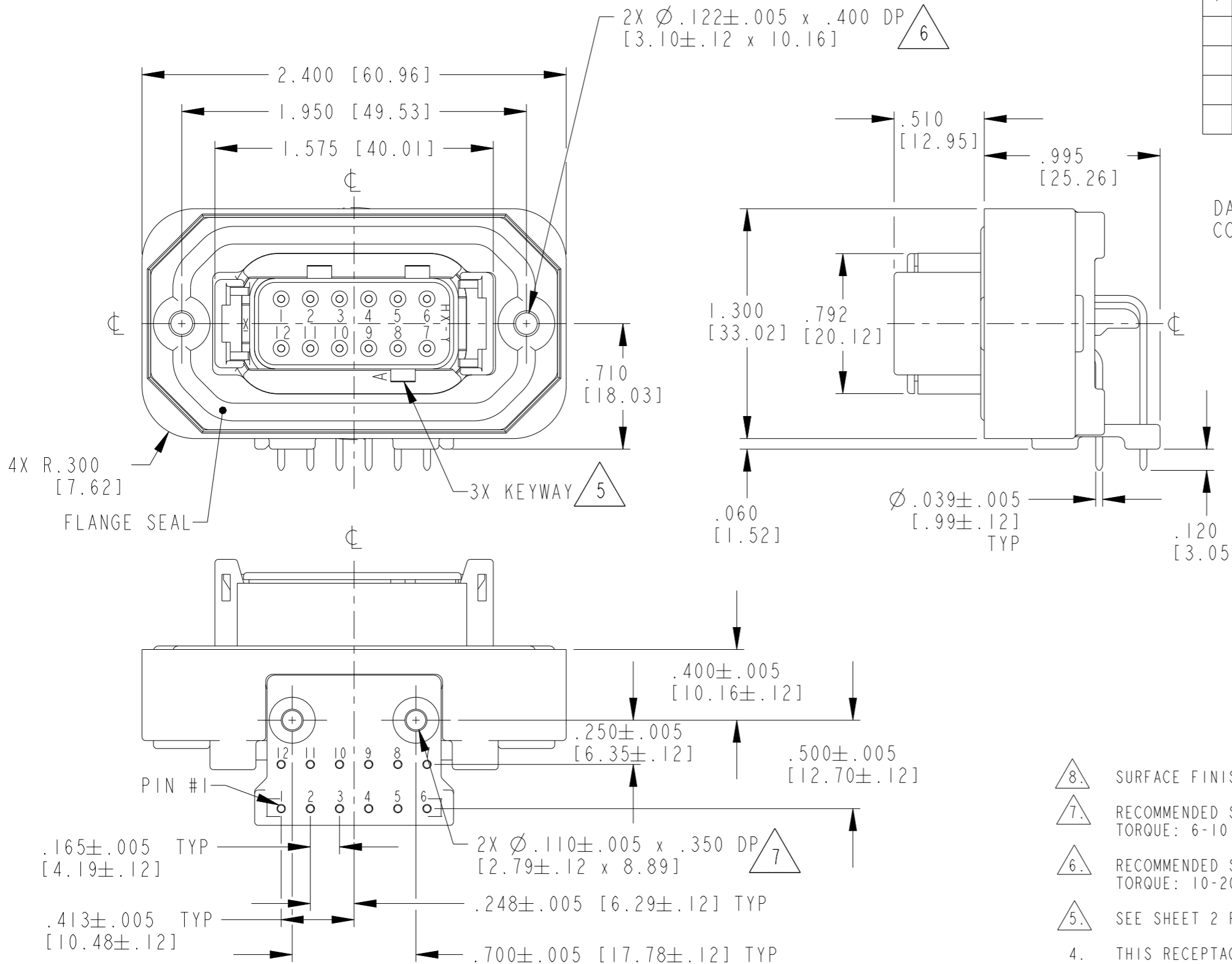


P	LTR	DESCRIPTION	DATE	DWN	APVD
	D1	ECR-21-108593	05AUG2021	DRK	IG



- 8. SURFACE FINISH: 32 RMS OR BETTER; .005 [0.12]
- 7. RECOMMENDED SCREW: 4-20 [M3.12 x 1.27] THREAD-FORMING SCREW. TORQUE: 6-10 IN-LB [0.68-1.13 NM].
- 6. RECOMMENDED SCREW: 6-19 [M3.63 x 1.34] THREAD-FORMING SCREW. TORQUE: 10-20 IN-LB [1.13-2.25 NM].
- 5. SEE SHEET 2 FOR OTHER KEY ARRANGEMENTS.
- 4. THIS RECEPTACLE MATES WITH DTM06-12S*-**** PLUG (*=A,B,C,D KEYS; ****=ALL MODIFICATIONS).

3. CONTACT PLATING - MATING SIDE: NICKEL; PCB SIDE: TIN

2 MATERIAL -
 HOUSING & PIN ALIGNMENT PLATE: PA46 GF30; GRAY
 SLEEVE RETAINER PA46 GF10 (SEE SHEET 2 FOR COLORS)
 SEALS: VMQ (RED-ORANGE)
 PINS: COPPER ALLOY

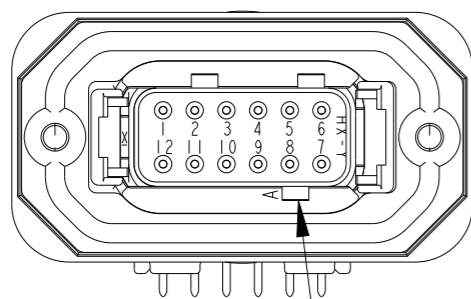
1. PANEL CUTOUT: ±0.010 [0.25]

NOTES:

THIS DRAWING IS A CONTROLLED DOCUMENT.		DWN D MEYER 23APR2002	TE TE Connectivity													
DIMENSIONS: INCHES [mm]		CHK B BYFORD 07OCT2011														
TOLERANCES UNLESS OTHERWISE SPECIFIED: ±0.025 [0.64mm]		APVD S BEARD 07OCT2011	NAME RECEPTACLE 12 #20 SIZE CONTACTS KEY ARRANGEMENTS A, B, C AND D 90 DEG, DTM SERIES													
<table border="1"> <tr> <td>0 PLC</td> <td>±-</td> </tr> <tr> <td>1 PLC</td> <td>±-</td> </tr> <tr> <td>2 PLC</td> <td>±-</td> </tr> <tr> <td>3 PLC</td> <td>±-</td> </tr> <tr> <td>4 PLC</td> <td>±-</td> </tr> <tr> <td>ANGLES</td> <td>±</td> </tr> </table>		0 PLC	±-	1 PLC	±-	2 PLC	±-	3 PLC	±-	4 PLC	±-	ANGLES	±	PRODUCT SPEC -	SIZE A3	CAGE CODE 11139
0 PLC	±-															
1 PLC	±-															
2 PLC	±-															
3 PLC	±-															
4 PLC	±-															
ANGLES	±															
MATERIAL 2		APPLICATION SPEC -	DRAWING NO C=DTM13-12PX	RESTRICTED TO -												
		WEIGHT -	SCALE 3:2 SHEET 1 OF 2 REV D1													
CUSTOMER DRAWING																

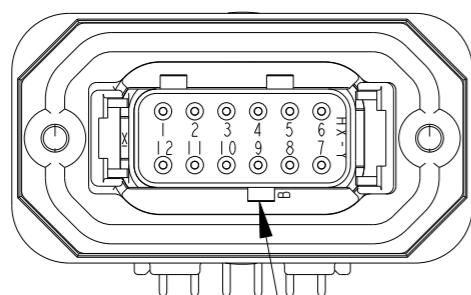
P	LTR	DESCRIPTION	DATE	DWN	APVD
-	-	SEE SHEET 1	-	-	-

DTM13-12PA
KEY:-A-



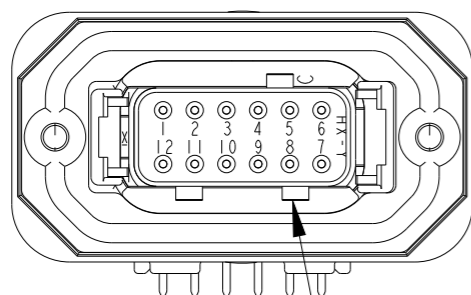
3X KEYWAY
SLEEVE RETAINER: GRAY

DTM13-12PB
KEY: -B-



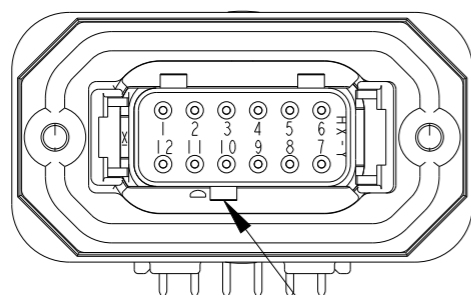
3X KEYWAY
SLEEVE RETAINER: BLACK

DTM13-12PC
KEY: -C-

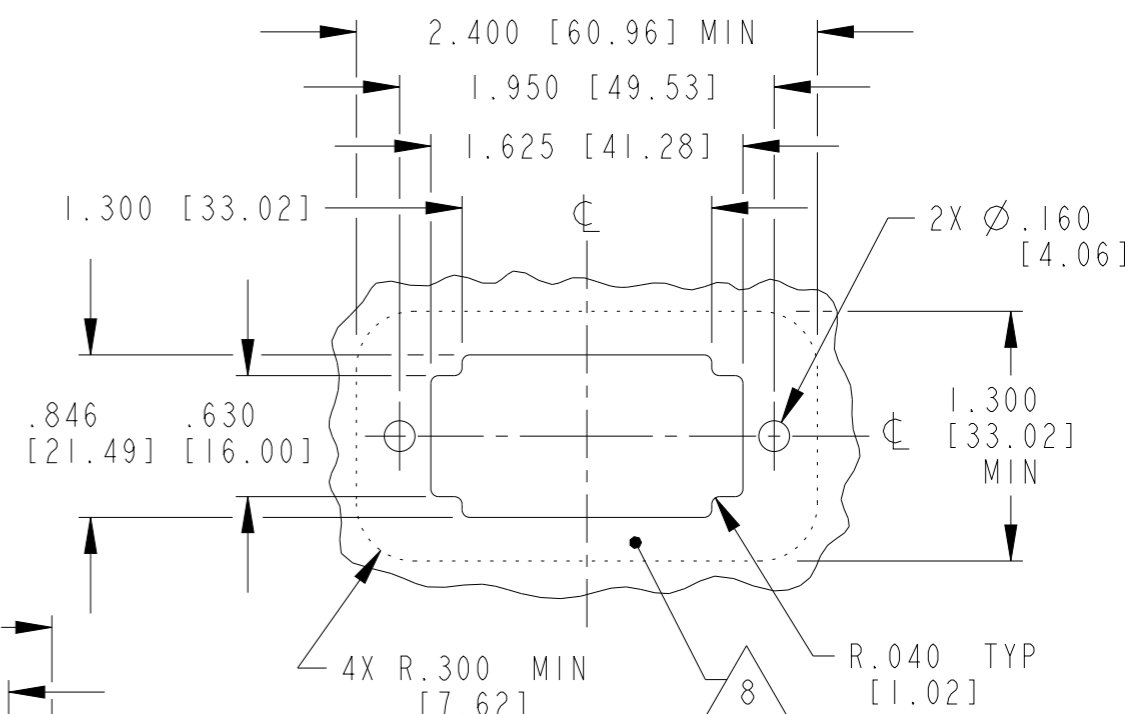


3X KEYWAY
SLEEVE RETAINER: GREEN

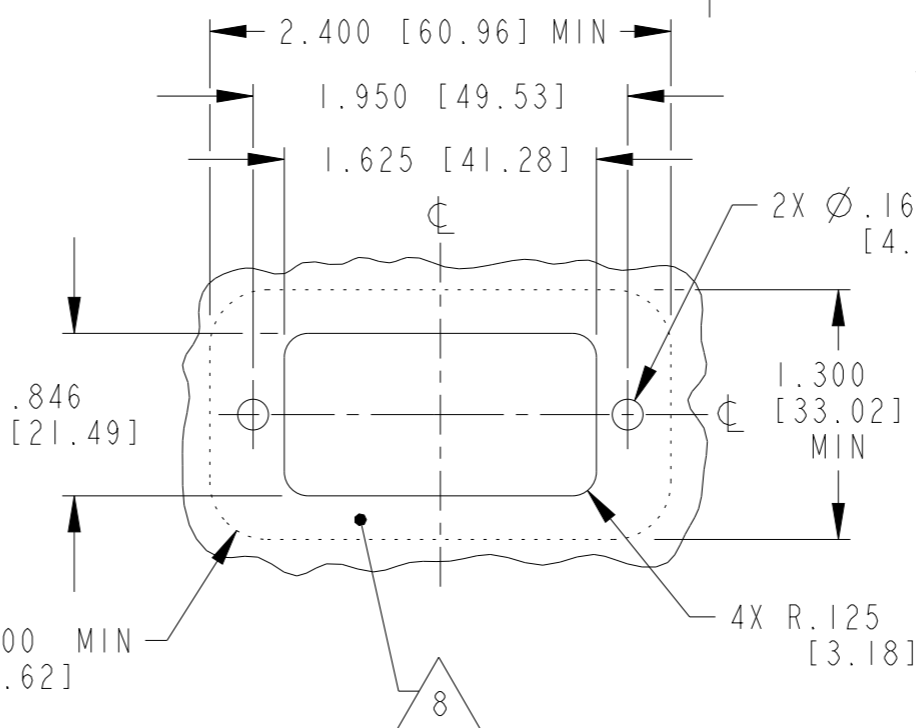
DTM13-12PD
KEY: -D-



3X KEYWAY
SLEEVE RETAINER: BROWN



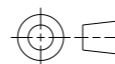
**RECOMMENDED PANEL
CUTOUT**



THIS DRAWING IS A CONTROLLED DOCUMENT.

DIMENSIONS:
INCHES [mm]

TOLERANCES UNLESS
OTHERWISE SPECIFIED:
±0.025 [0.64mm]



0 PLC	±-
1 PLC	±-
2 PLC	±-
3 PLC	±-
4 PLC	±-
ANGLES	±-

MATERIAL



FINISH

DWN 23APR2002

CHK D MEYER

07OCT2011

APVD B BYFORD

07OCT2011

PRODUCT SPEC

-

APPLICATION SPEC

-

WEIGHT

-

CUSTOMER DRAWING



TE Connectivity

NAME
RECEPTACLE 12 #20 SIZE CONTACTS
KEY ARRANGEMENTS A, B, C AND D
90 DEG, DTM SERIES

SIZE CAGE CODE DRAWING NO RESTRICTED TO

A3 11139 C=DTM13-12PX -

SCALE 3:2 SHEET 2 OF 2 REV DI

X-ON Electronics

Largest Supplier of Electrical and Electronic Components

Click to view similar products for [Automotive Connectors](#) category:

Click to view products by [TE Connectivity](#) manufacturer:

Other Similar products are found below :

[003-018-000](#) [60403001](#) [60993906-B](#) [M902-2131](#) [M902-2161](#) [M902-2344](#) [72.330.1035.1](#) [73.353.4028.0](#) [F119300-B](#) [F166900](#) [F258300-B](#)
[F358300-B](#) [F407400](#) [F444110](#) [F487000](#) [F509500B-B](#) [827153-1](#) [8N1515-32-24P](#) [9-1326729-8](#) [925474-1](#) [928905-1](#) [964562-4](#) [968782-1](#)
[GT17SA-8DS-HU](#) [98891-1012](#) [98947-1016](#) [12004147](#) [12004475-L](#) [12010290](#) [12010309-B](#) [12015454](#) [12020219-B](#) [12041318-B](#) [12052225-](#)
[L](#) [12052466](#) [12064869](#) [12004327-B](#) [12015308](#) [12015384](#) [12015909](#) [1-21030-1](#) [12041254](#) [12041318](#) [12047946-B](#) [12047957](#) [12047957-L](#)
[12059473](#) [12066261](#) [12110546](#) [12110546-B](#)