

| REVISIONS | | | | | |
|-----------|-----|-----------------|-----------|-----|------|
| P | LTR | DESCRIPTION | DATE | DWN | APVD |
| | 10 | INITIAL RELEASE | 11FEB2020 | GK | AK |

NOTES: -

1. CHARACTERS: -

0-9, A-Z, +, -, /, ~, ≡

0, 1, 6 & 9 FOLLOWED BY A FULL STOP.

HEIGHT 1.7 - 1.9 mm

TOLERANCE (AXIAL) ±0.75

(ROTATIONAL) ±5°

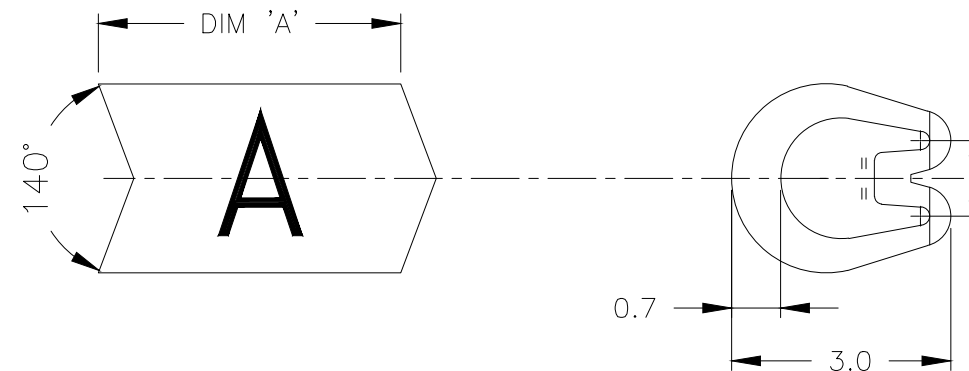
CHEVRON CUT MARKERS: -

CHARACTERS TO BE CENTRALLY DISPOSED ON MARKER FACE AND IN THE ATTITUDE SHOWN RELATIVE TO CHEVRON.

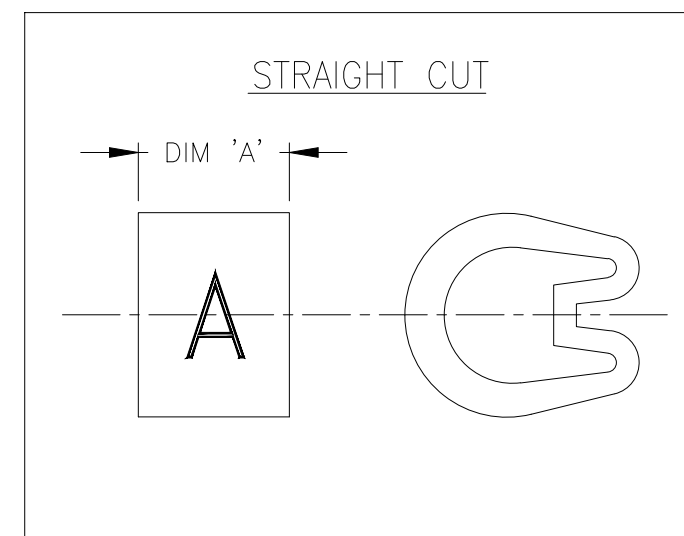
2. MARKER LENGTHS (DIMENSION 'A'): -

WITH SINGLE MARK 3.90-4.75


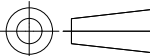
WITH DOUBLE MARK 5.75-6.25



CHEVRON CUT



STRAIGHT CUT

| | | | | | |
|---|--|------------------------------------|---|-----------|-------------|
| THIS DRAWING IS A CONTROLLED DOCUMENT. | | DWN 11FEB2020 GOPALAKRISHNA H V |  TE Connectivity | | |
| | | CHK 11FEB2020 ALAN KEAN | | | |
| DIMENSIONS: mm | | APVD 11FEB2020 ALAN KEAN | NAME | | |
|  | | PRODUCT SPEC | MARKER Z TYPE SIZE 5 STRAIGHT / CHEVRON CUT | | |
| TOLERANCES UNLESS OTHERWISE SPECIFIED: | | APPLICATION SPEC | RESTRICTED TO | | |
| 0 PLC ± - 1 PLC ± 0.2 2 PLC ± - 3 PLC ± - 4 PLC ± - ANGLES ± - | | WEIGHT | SIZE | CAGE CODE | DRAWING NO |
| MATERIAL PVC 1.35 - 1.22g/250mm | | FINISH | A3 | 00779 | C-1601A0001 |
| | | CUSTOMER DRAWING | SCALE | SHEET | REV |
| | | | 10:1 | 1 OF 1 | 10 |

X-ON Electronics

Largest Supplier of Electrical and Electronic Components

Click to view similar products for [Wire Labels & Markers](#) category:

Click to view products by [TE Connectivity](#) manufacturer:

Other Similar products are found below :

[89078GBEST](#) [89082GBESR](#) [89082GBEST](#) [PCL025-4](#) [5761-2SF](#) [58400](#) [586R734H02](#) [M1.040.0000.6](#) [CRS-CM5M](#) [CRS-M18M](#) [CS1836-000](#) [CS8626-000](#) [CU6337-000](#) [CU6342-000](#) [CU6343-000](#) [CWD01-0](#) [CWD012-0](#) [CWD012-7](#) [CWD015-3](#) [CWD015-7](#) [CWD02-0](#) [CWD02-3](#) [CWD02-4](#) [CWD02-6](#) [CWD02-8](#) [CWD02-A](#) [CWD02-D](#) [CWD02-H](#) [CWD02-K](#) [CWD02-L](#) [CWD02-M](#) [CWD02-P](#) [CWD02-Q](#) [CWD02-R](#) [CWD02-U](#) [CWD02-W](#) [CWD02-Y](#) [CWD03-+](#) [CWD03-0](#) [CWD03-P](#) [CWD06-0](#) [CWD06-8](#) [CWD06-9](#) [CWD06-L](#) [CWD06-N](#) [CWD09-0](#) [CWD09-5](#) [CWD09-7](#) [6806810001](#) [CZ2857-000](#)