

| REVISIONS |     |                 |           |     |      |
|-----------|-----|-----------------|-----------|-----|------|
| P         | LTR | DESCRIPTION     | DATE      | DWN | APVD |
|           | 10  | INITIAL RELEASE | 11FEB2020 | GK  | AK   |

NOTES: -

1. CHARACTERS: -

0-9, A-Z, +, -, /, ~, ≡

0, 1, 6 & 9 FOLLOWED BY A FULL STOP.

HEIGHT 1.8 - 2.0 mm

TOLERANCE (AXIAL) ±0.75

(ROTATIONAL) ±5°

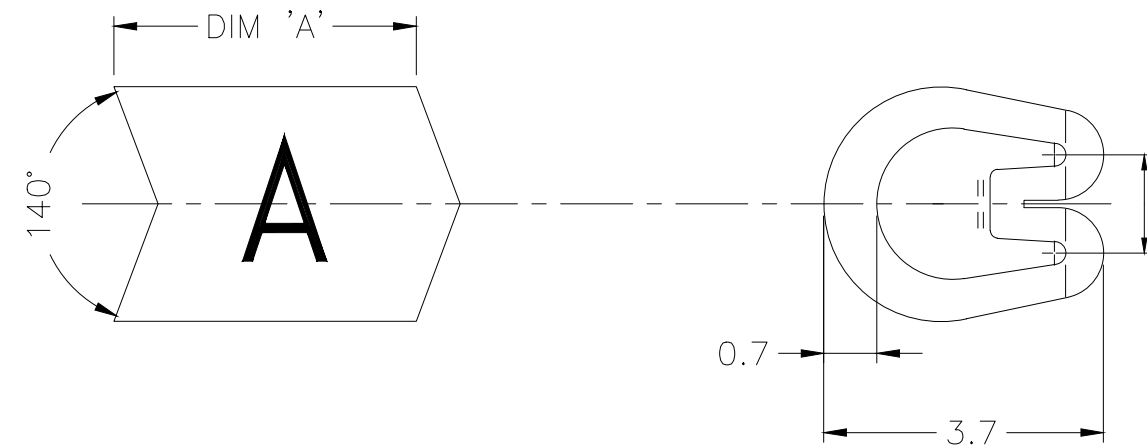
CHEVRON CUT MARKERS: -

CHARACTERS TO BE CENTRALLY DISPOSED ON MARKER FACE AND IN THE ATTITUDE SHOWN RELATIVE TO CHEVRON.

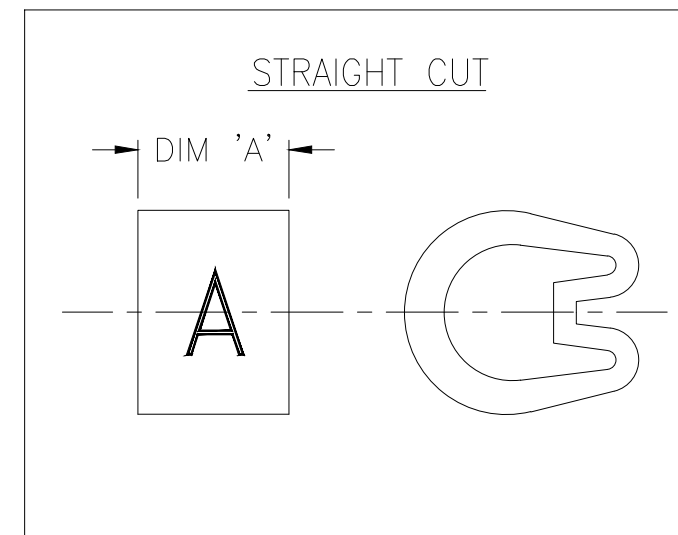
2. MARKER LENGTHS ( DIMENSION 'A'): -

WITH SINGLE MARK 4.00 - 4.75


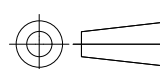
WITH DOUBLE MARK 5.75 - 6.25



CHEVRON CUT



STRAIGHT CUT

|   |  |                                    |   |           |             |               |        |
|---|--|------------------------------------|---|-----------|-------------|---------------|--------|
| THIS DRAWING IS A CONTROLLED DOCUMENT.  |  | DWN 11FEB2020<br>GOPALAKRISHNA H V |  TE Connectivity |           |             |               |        |
|   |  | CHK 11FEB2020<br>ALAN KEAN         |   |           |             |               |        |
| DIMENSIONS: mm  |  | APVD 11FEB2020<br>ALAN KEAN        | NAME  |           |             |               |        |
|                                    |  | PRODUCT SPEC                       | MARKER Z TYPE SIZE 7<br>STRAIGHT / CHEVRON CUT  |           |             |               |        |
| TOLERANCES UNLESS OTHERWISE SPECIFIED:<br>0 PLC ± -<br>1 PLC ± 0.2<br>2 PLC ± -<br>3 PLC ± -<br>4 PLC ± -<br>ANGLES ± - |  | APPLICATION SPEC                   | SIZE  | CAGE CODE | DRAWING NO  | RESTRICTED TO |        |
| MATERIAL  |  | WEIGHT                             | A3  | 00779     | C-1601A0002 | -             |        |
| PVC<br>2.05-1.85g/250mm   |  | FINISH                             | CUSTOMER DRAWING  |           | SCALE 10:1  | SHEET 1 OF 1  | REV 10 |

## X-ON Electronics

Largest Supplier of Electrical and Electronic Components

*Click to view similar products for [Wire Labels & Markers](#) category:*

*Click to view products by [TE Connectivity](#) manufacturer:*

Other Similar products are found below :

[89078GBEST](#) [89082GBESR](#) [89082GBEST](#) [PCL025-4](#) [5761-2SF](#) [58400](#) [586R734H02](#) [M1.040.0000.6](#) [CRS-CM5M](#) [CRS-M18M](#) [CS1836-000](#) [CS8626-000](#) [CU6337-000](#) [CU6342-000](#) [CU6343-000](#) [CWD01-0](#) [CWD012-0](#) [CWD012-7](#) [CWD015-3](#) [CWD015-7](#) [CWD02-0](#) [CWD02-3](#) [CWD02-4](#) [CWD02-6](#) [CWD02-8](#) [CWD02-A](#) [CWD02-D](#) [CWD02-H](#) [CWD02-K](#) [CWD02-L](#) [CWD02-M](#) [CWD02-P](#) [CWD02-Q](#) [CWD02-R](#) [CWD02-U](#) [CWD02-W](#) [CWD02-Y](#) [CWD03-+](#) [CWD03-0](#) [CWD03-P](#) [CWD06-0](#) [CWD06-8](#) [CWD06-9](#) [CWD06-L](#) [CWD06-N](#) [CWD09-0](#) [CWD09-5](#) [CWD09-7](#) [6806810001](#) [CZ2857-000](#)