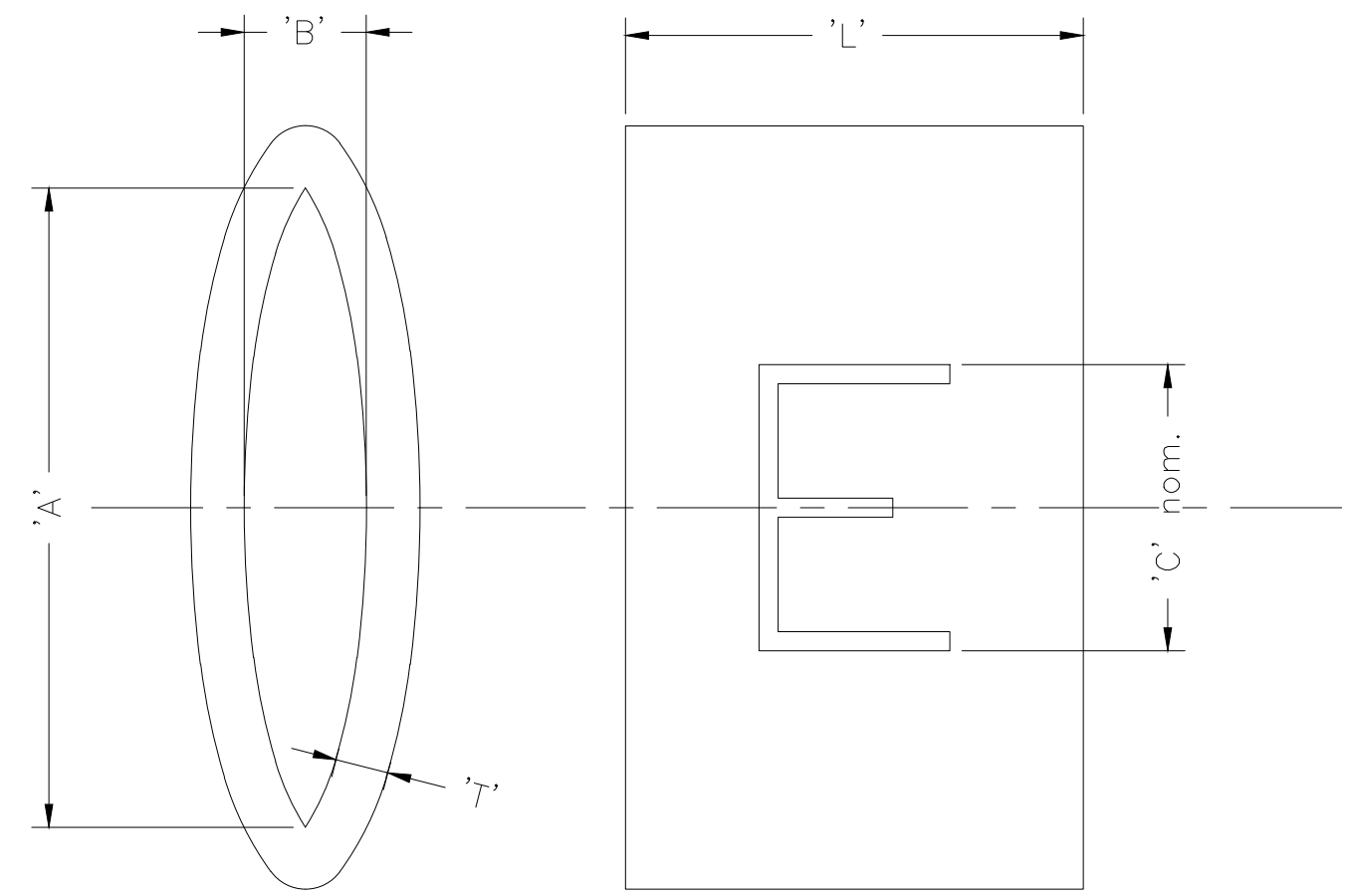


THIS DRAWING IS UNPUBLISHED. RELEASED FOR PUBLICATION
 © COPYRIGHT 2020 TE Connectivity Ltd. ALL RIGHTS RESERVED.

| REVISIONS | | | | | |
|-----------|-----|--------------------------|-----------|-----|------|
| P | LTR | DESCRIPTION | DATE | DWN | APVD |
| | 9 | INITIAL CUSTOMER DRAWING | 10FEB2020 | AFK | LS |

NOTES:-

- CHARACTERS:-
 0-9, A-Z, +, -, /, ~ & ±
 0, 1, 6 & 9 ARE FOLLOWED BY A FULL STOP
 TOLERANCE (AXIAL) ±0.75
 (ROTATIONAL) ±5°



| DESCRIPTION (1st 4 DIGITS) | SIZE | "A" | "B" | CHARACTER HEIGHT "C" | "L" | "T" | WEIGHT / 250mm |
|----------------------------|------|-------------|-------------|----------------------|-------------|-------------|----------------|
| 1358 | 30 | 4.95 - 5.25 | 1.30 - 1.60 | 2.4 | 4.25 - 4.75 | 0.68 - 0.78 | 2.94 - 3.24 |
| 1361 | 65 | 9.90 - 10.2 | 2.90 - 3.20 | 4.0 | 5.50 - 6.00 | 1.18 - 1.28 | 9.57 - 10.57 |

| | | | | | | | | | |
|---|--|----------------------|-----------|---|--------------------|--------------|-----------------|------------------------|-----------------|
| THIS DRAWING IS A CONTROLLED DOCUMENT. | | DWN AFK | 07FEB2020 | TE Connectivity NAME MARKER, K TYPE | | | | | |
| DIMENSIONS: mm | | CHK - | APVD - | | | | | | |
| TOLERANCES UNLESS OTHERWISE SPECIFIED: 0 PLC ± - 1 PLC ± - 2 PLC ± - 3 PLC ± - 4 PLC ± - ANGLES ± - | | PRODUCT SPEC RW-2535 | | RESTRICTED TO - | | | | | |
| MATERIAL PVC | | FINISH - | | APVD - | APPLICATION SPEC - | SIZE A3 | CAGE CODE 0198G | DRAWING NO C-1602A0001 | RESTRICTED TO - |
| CUSTOMER DRAWING | | | | WEIGHT SEE TABLE | SCALE - | SHEET 1 OF 1 | REV 9 | | |

X-ON Electronics

Largest Supplier of Electrical and Electronic Components

Click to view similar products for [Wire Labels & Markers](#) category:

Click to view products by [TE Connectivity](#) manufacturer:

Other Similar products are found below :

[89078GBEST](#) [89082GBESR](#) [89082GBEST](#) [PCL025-4](#) [5761-2SF](#) [58400](#) [586R734H02](#) [M1.040.0000.6](#) [CRS-CM5M](#) [CRS-M18M](#) [CS1836-000](#) [CS8626-000](#) [CU6337-000](#) [CU6342-000](#) [CU6343-000](#) [CWD01-0](#) [CWD012-0](#) [CWD012-7](#) [CWD015-3](#) [CWD015-7](#) [CWD02-0](#) [CWD02-3](#) [CWD02-4](#) [CWD02-6](#) [CWD02-8](#) [CWD02-A](#) [CWD02-D](#) [CWD02-H](#) [CWD02-K](#) [CWD02-L](#) [CWD02-M](#) [CWD02-P](#) [CWD02-Q](#) [CWD02-R](#) [CWD02-U](#) [CWD02-W](#) [CWD02-Y](#) [CWD03-+](#) [CWD03-0](#) [CWD03-P](#) [CWD06-0](#) [CWD06-8](#) [CWD06-9](#) [CWD06-L](#) [CWD06-N](#) [CWD09-0](#) [CWD09-5](#) [CWD09-7](#) [6806810001](#) [CZ2857-000](#)