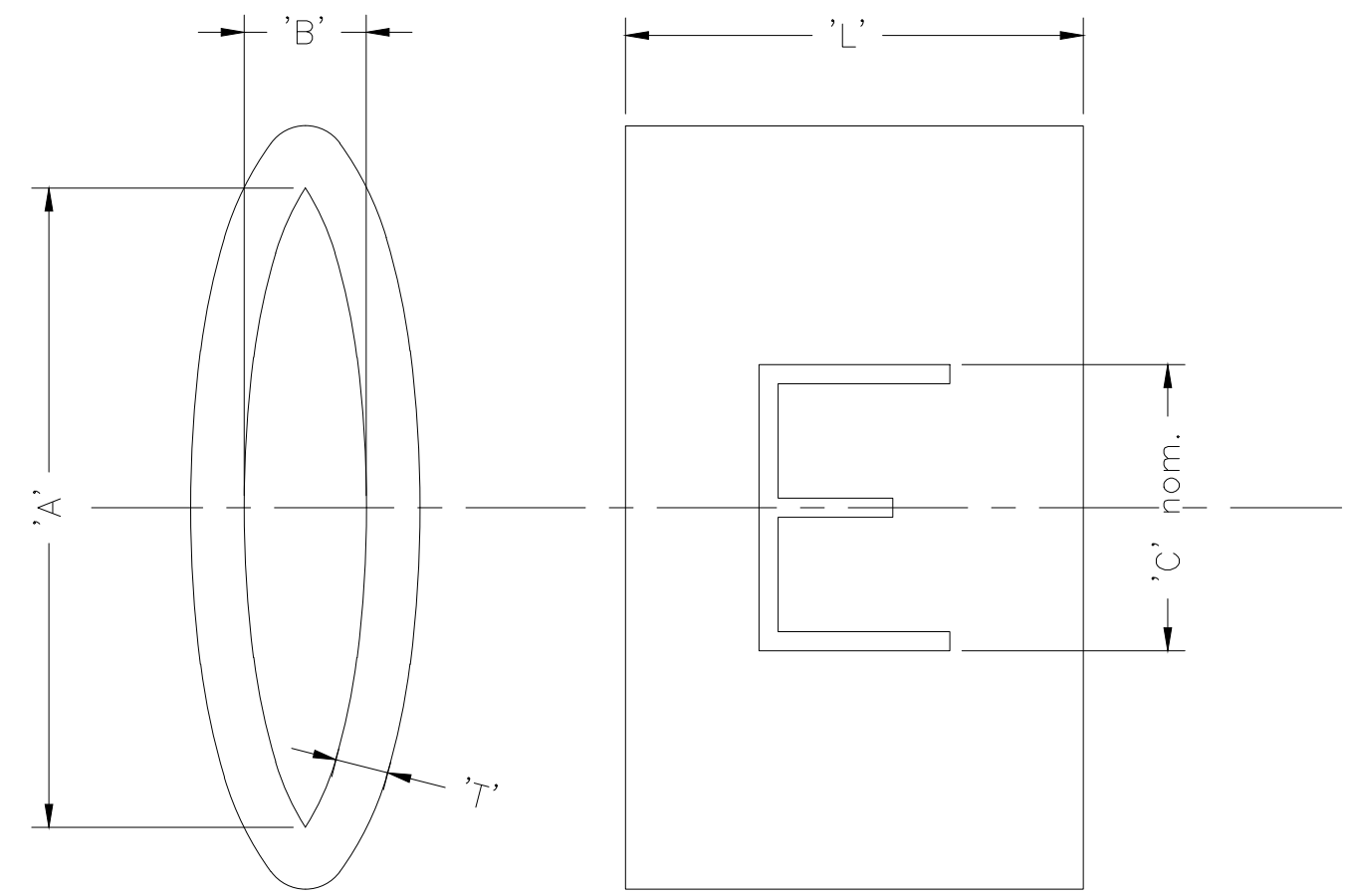


THIS DRAWING IS UNPUBLISHED. RELEASED FOR PUBLICATION  
 © COPYRIGHT 2020 TE Connectivity Ltd. ALL RIGHTS RESERVED.

| REVISIONS |     |                          |           |     |      |
|-----------|-----|--------------------------|-----------|-----|------|
| P         | LTR | DESCRIPTION              | DATE      | DWN | APVD |
|           | 9   | INITIAL CUSTOMER DRAWING | 10FEB2020 | AFK | LS   |

NOTES:-

- CHARACTERS:-  
 0-9, A-Z, +, -, /, ~ & ±  
 0, 1, 6 & 9 ARE FOLLOWED BY A FULL STOP  
 TOLERANCE (AXIAL) ±0.75  
 (ROTATIONAL) ±5°



| DESCRIPTION (1st 4 DIGITS) | SIZE | "A"         | "B"         | CHARACTER HEIGHT "C" | "L"         | "T"         | WEIGHT / 250mm |
|----------------------------|------|-------------|-------------|----------------------|-------------|-------------|----------------|
| 1358                       | 30   | 4.95 - 5.25 | 1.30 - 1.60 | 2.4                  | 4.25 - 4.75 | 0.68 - 0.78 | 2.94 - 3.24    |
| 1361                       | 65   | 9.90 - 10.2 | 2.90 - 3.20 | 4.0                  | 5.50 - 6.00 | 1.18 - 1.28 | 9.57 - 10.57   |

|   |  |                      |           |                            |         |  |       |                     |
|---|--|----------------------|-----------|----------------------------|---------|--|-------|---------------------|
| THIS DRAWING IS A CONTROLLED DOCUMENT.                                      |  | DWN AFK              | 07FEB2020 | <b>STE</b> TE Connectivity |         |  |       |                     |
| DIMENSIONS: mm  |  | CHK -                | APVD -    |                            |         |  |       | NAME MARKER, K TYPE |
| TOLERANCES UNLESS OTHERWISE SPECIFIED:                                      |  | PRODUCT SPEC RW-2535 |           | APPLICATION SPEC -         |         |  |       |                     |
| 0 PLC ± -<br>1 PLC ± -<br>2 PLC ± -<br>3 PLC ± -<br>4 PLC ± -<br>ANGLES ± - |  | MATERIAL PVC         |           | FINISH -                   |         | SIZE A3<br>CAGE CODE 0198G<br>DRAWING NO C-1602A0001 |       | RESTRICTED TO -     |
| CUSTOMER DRAWING  |  |                      |           | WEIGHT SEE TABLE           | SCALE - | SHEET 1 OF 1   | REV 9 |                     |

## X-ON Electronics

Largest Supplier of Electrical and Electronic Components

*Click to view similar products for [Wire Labels & Markers](#) category:*

*Click to view products by [TE Connectivity](#) manufacturer:*

Other Similar products are found below :

[89078GBEST](#) [89082GBESR](#) [89082GBEST](#) [PCL025-4](#) [5761-2SF](#) [58400](#) [586R734H02](#) [M1.040.0000.6](#) [CRS-CM5M](#) [CRS-M18M](#) [CS1836-000](#) [CS8626-000](#) [CU6337-000](#) [CU6342-000](#) [CU6343-000](#) [CWD01-0](#) [CWD012-0](#) [CWD012-7](#) [CWD015-3](#) [CWD015-7](#) [CWD02-0](#) [CWD02-3](#) [CWD02-4](#) [CWD02-6](#) [CWD02-8](#) [CWD02-A](#) [CWD02-D](#) [CWD02-H](#) [CWD02-K](#) [CWD02-L](#) [CWD02-M](#) [CWD02-P](#) [CWD02-Q](#) [CWD02-R](#) [CWD02-U](#) [CWD02-W](#) [CWD02-Y](#) [CWD03-+](#) [CWD03-0](#) [CWD03-P](#) [CWD06-0](#) [CWD06-8](#) [CWD06-9](#) [CWD06-L](#) [CWD06-N](#) [CWD09-0](#) [CWD09-5](#) [CWD09-7](#) [6806810001](#) [CZ2857-000](#)