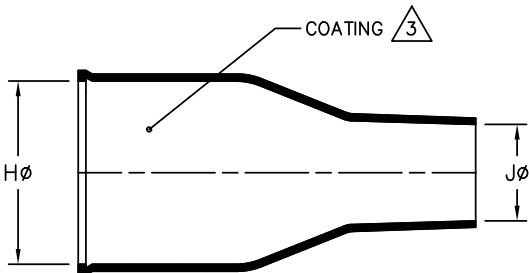
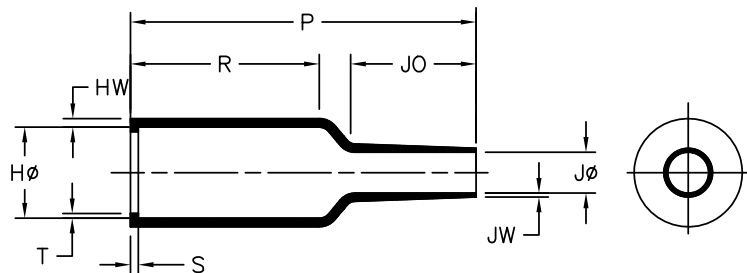


REVISIONS		
LTR	DESCRIPTION	DATE
A1	REVISED PER ECO-20-011498	07/27/2020



AS SUPPLIED



AFTER UNRESTRICTED RECOVERY

NOTES

- ALL DIMENSIONS ARE IN $\frac{\text{INCHES}}{[\text{MILLIMETERS}]}$
- DIMENSIONS APPEARING IN TABLE ARE AS FOLLOWS:
a - AS SUPPLIED
b - AFTER UNRESTRICTED RECOVERY

3. COATING (ADHESIVE): IS OPTIONAL. AS SUPPLIED DIMENSIONS APPEARING IN TABLE ARE FOR UNCOATED PARTS. WHEN COATING IS ADDED, ENTRY DIAMETER WILL BE REDUCED BY .06 [1.5] MAX.

- ORDERING INFORMATION

	202K111	-100	/XXX	-0
BASE PART NUMBER	_____	_____	_____	_____
MATERIAL DASH NUMBER	_____			
	-100 POLYOLEFIN, SEMI-FLEXIBLE ZEROHAL (RW-2082)			
ADHESIVE SLASH NUMBER	_____			
	SEE COMPATIBILITY CHART BELOW			
COLOR DESIGNATOR	_____			

TABLE OF DIMENSIONS											
PART DESCRIPTION	H		J		P	R	S	T	JO	HW	JW
	MIN	MAX	MIN	MAX	±10%	±10%	±10%	±10%	±10%	±20%	±20%
	a	b	a	b	b	b	b	b	b	b	b
202K111	.71 [18,0]	.27 [6,9]	.31 [8,0]	.12 [3,0]	1.54 [39]	.94 [24]	.07 [1,7]	.04 [0,9]	.43 [10,8]	.05 [1,3]	.03 [0,7]

COMPATIBILITY CHART		
MATERIAL DASH NO.	ADHESIVE (COATING) SLASH NUMBER	ADHESIVE (COATING) S NUMBER
-100	/86; /180	S-1048; S-1030

UNLESS OTHERWISE SPECIFIED DIMENSIONS ARE INCHES. METRIC DIMENSIONS ARE IN BRACKETS.
DECIMAL TOLERANCES
.XXX ± 0.005 [0.13 mm]
.XX ± 0.01 [0.25 mm]
.X ± 0.1 [0.50 mm]
ANGLE TOLERANCE
ANGLE ± 1 DEG.

REVISED
YNGUYEN
APPROVED
S.GRAVANO

Raychem Molded Parts
CUSTOMER DRAWING
 TE Connectivity
TITLE
BOOT, STRAIGHT WITH LIP

THIRD ANGLE PROJECTION

SIZE B CODE IDENT. NO. 06090 DWG. NO. 202K111-100

X-ON Electronics

Largest Supplier of Electrical and Electronic Components

Click to view similar products for [Heat Shrink Cable Boots & End Caps](#) category:

Click to view products by [TE Connectivity](#) manufacturer:

Other Similar products are found below :

[577159N001](#) [007758-000](#) [610368N003](#) [618803-000](#) [645494-000](#) [M85049/141-02HU](#) [M85049/141-03HU](#) [M85049/141-04HU](#) [687025-000](#)
[705331-000](#) [718446-000](#) [725666N001](#) [729257-000](#) [F21914-000](#) [F27131-000](#) [F85868-000](#) [770-006A103R](#) [770-006A304W1](#) [770-](#)
[006A305W1](#) [770-006A308W1](#) [770-011T303W1](#) [770-011T304W1](#) [770-020S702W1](#) [770-020S704W1](#) [806542N001](#) [807507-000](#) [808059-000](#)
[808296-000](#) [808362-000](#) [808828-000](#) [809125-000](#) [809130-000](#) [809218-000](#) [811218-000](#) [811288-000](#) [812014-000](#) [812047-000](#) [813166-000](#)
[813767N002](#) [814417-000](#) [819115N001](#) [819117N001](#) [823026-000](#) [823070-000](#) [825002-000](#) [841189N001](#) [861471-000](#) [866647-000](#) [937577-](#)
[000](#) [950764-000](#)