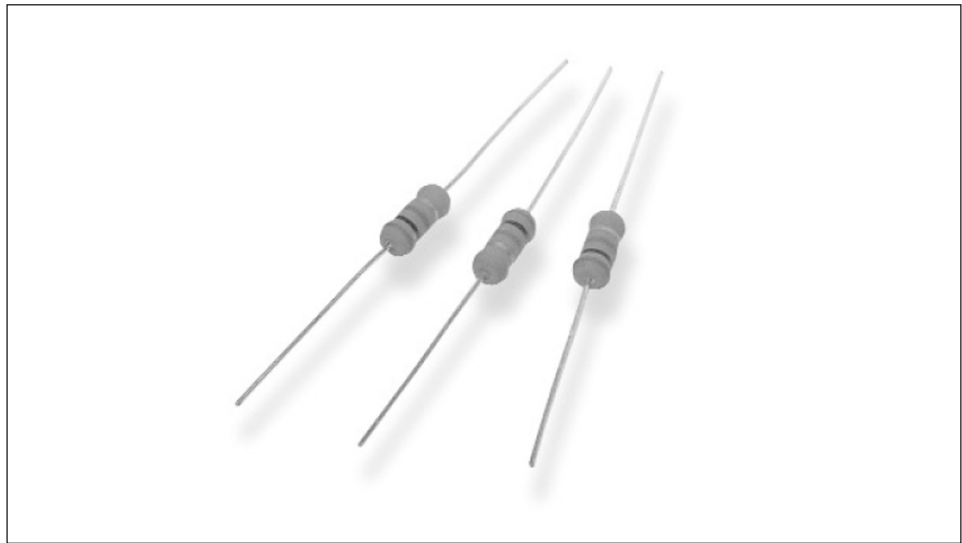


## Type ES Series

### Key Features

- High Power to Size Ratio
- Entirely Welded Construction
- 0.5 Watt to 10 Watt Sizes
- Insulation Resistance >1000M
- Completely Flameproof
- Temperature Coefficient 300 ppm
- All Product Banded

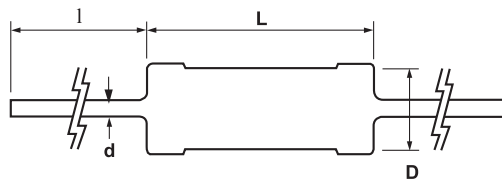


The ES is a new wirewound resistor from TE Connectivity manufactured to stringent quality control requirements and is an economy sister to the well known TE Connectivity ER Series. Whilst very slightly larger than the ER and manufactured to a marginally different specification, the ES is suited to volume requirements in power supplies, process control instruments, communication equipment, and other industrial positions. In addition to the ES we offer the practicability of a wirewound resistor down to 9.0mm. x 3.00 mm., body size.

### Characteristics - Electrical

<b>Resistance Values:</b>	R10 - 3K3 (Other values by agreement/see wattage table below)
<b>Selection Tolerance:</b>	± 5 % (Other tolerances by agreement)
<b>Rated Dissipation @ 70°C:</b>	See Table Below
<b>Dielectric Strength:</b>	500V AC
<b>Insulation Resistance:</b>	1000 M
<b>Short Term Overload Power:</b>	5 times overload 5 seconds
<b>Terminal Strength:</b>	5lb pull Test
<b>Solderability:</b>	Meets MIL - STD - 202
<b>Maximum Operating Temperature:</b>	200°C
<b>Temperature Coefficient of Resistance:</b>	± 300ppm°C

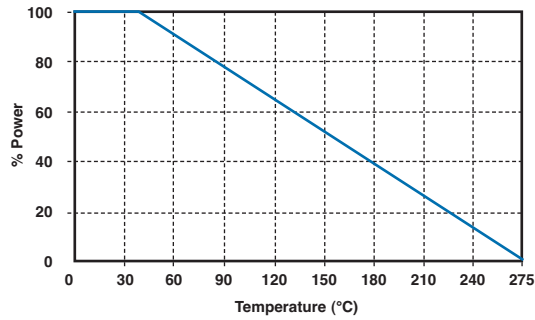
### Dimensions



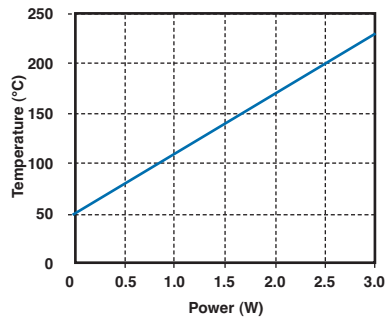
Type ES @ 70°C	Dimensions				Resistance Range	Dielectric Withstand Voltage
	D±1.0	L±1.5	l±3.0	d±0.05		
1/2W	3.0	9.0	30.0	0.65	R05-68R	350V
1W	4.0	9.0	30.0	0.65	R05-100R	500V
2W	5.0	11.0	30.0	0.80	R05-150R	500V
3W	5.5	13.0	38.0	0.80	R05-200R	500V
3WY	6.0	17.0	38.0	0.80	201R-470R	500V
5W	6.5	20.0	38.0	0.80	R10-390R	500V
6W	8.5	25.0	38.0	0.80	R10-1K0	500V
7W	8.5	32.0	38.0	0.80	R10-1K5	500V
8W	8.5	41.0	38.0	0.80	R10-2K2	800V
10W	8.5	53.0	33.0	0.80	R10-3K3	1000V

## Type ES Series

### Resistance Value Marking



### Surface Temperature Vs Power



### How to Order

#### ES2W

##### Common Part

ES05W - 1/2W  
 ES1W - 1W  
 ES2W - 2W  
 ES3W - 3W  
 ES3WY - 3W  
 ES5W - 5W  
 ES6W - 6W  
 ES7W - 7W  
 ES8W - 8W  
 ES10W - 10W

#### R10

##### Resistance Value

0.1 ohm  
 (100 milliohms) R10  
 1 ohm  
 (1000 milliohms) 1R0  
 1K ohm  
 (1000 ohms) 1K0

#### J

##### Tolerance

J - ±5%

TE Connectivity, TE connectivity (logo) and TE (logo) are trademarks.  
 Other logos, product and Company names mentioned herein may be trademarks of their respective owners.

While TE has made every reasonable effort to ensure the accuracy of the information in this datasheet, TE does not guarantee that it is error-free, nor does TE make any other representation, warranty or guarantee that the information is accurate, correct, reliable or current. TE reserves the right to make any adjustments to the information contained herein at any time without notice. TE expressly disclaims all implied warranties regarding the information contained herein, including, but not limited to, any implied warranties of merchantability or fitness for a particular purpose. The dimensions in this datasheet are for reference purposes only and are subject to change without notice. Specifications are subject to change without notice. Consult TE for the latest dimensions and design specifications.

## X-ON Electronics

Largest Supplier of Electrical and Electronic Components

*Click to view similar products for [Wirewound Resistors - Through Hole](#) category:*

*Click to view products by [TE Connectivity](#) manufacturer:*

Other Similar products are found below :

[75822-2K4](#) [90J56R](#) [PW10-39R-5%](#) [ALSR1-20](#) [EP3WS47RJ](#) [RWR81S12R4FRB12](#) [RWR81SR511FRB12](#) [RWR81SR619FRBSL](#)  
[RWR89S9310FPB12](#) [27J1K0](#) [93J62RE](#) [AC10000002208JAB00](#) [1HJ-25](#) [FSQ5WR47J](#) [25J39K](#) [25J5R0-B](#) [25W1D0](#) [272-303-JBW](#) [280-](#)  
[PRM5-150-RC](#) [CP0005270R0JE1491](#) [CPCC0510R00JE32](#) [CPCC051R000JB31](#) [CPW052K500JE143](#) [CPW05700R0JE143](#) [C1010RJL](#)  
[CA000210R00JE14](#) [VPR5F1500](#) [RS02B887R0FE73](#) [RWR74SR604FRB12](#) [RWR84S1001FRB12](#) [RWR84S20R0FSBSL](#)  
[RWR89S6190FSB12](#) [CPW055R000JB143](#) [ULW5-39R0JT075](#) [W31-R47JA1](#) [VP25K-120](#) [VC3D900](#) [ULW5-68RJT075](#) [65888-3R3](#)  
[RWR81S4R22FRB12](#) [CPW151K500JE313](#) [RWR80N3400FSB12](#) [RWR81S1000FRB12](#) [RWR81S1000FSB12](#) [RWR89S6R81FRB12](#)  
[RWR89N30R1FRB12](#) [RWR81S4R99FPB12](#) [RWR74S4R02FRRSL](#) [WW1JT33R0](#) [VC3D.5](#)