

Power Latching Relay EW60

- 1 pole 60A, 1 form A (NO) contact
- Polarized bistable (latching) with 1 or 2 coils
- NEMA 410-2011, 16A, 277VAC, electronic ballast; 20A branch circuit
- 480A inrush, 2.1m sec

Typical applications

Lighting control, bus actuator, power distribution, circuit protection, inverter

Approvals

UL

Contact Data

Contact arrangement	1 form A (NO)
Rated voltage	250VAC
Max. switching voltage	440VAC
Rated current	60A
Breaking capacity max.	15kVA
Contact material	AgSnO ₂
Initial voltage drop	≤1mΩ @ 3A, 12V
Frequency of operation with/without load	360/3600h ⁻¹

Contact ratings

Type	Contact	Load	Cycles
UL508			
EW60-1A3	NO	60A, 250VAC, resistive, 70°C	1x10 ⁴ 1)
EW60-1A3	NO	60A, 250VAC, general use, 70°C	6x10 ³
EW60-1A3	NO	120VAC, 1HP (horsepower) 23°C	1x10 ⁴
EW60-1A3	NO	16 or 20A, electr. ballast, 70°C	50x10 ³

1) in Process

Coil Data

Magnetic system	polarized, bistable (latching)
Number of coils	1 or 2
Coil voltage range	12VDC
Min./Max. energization duration	100ms/1min at <10% duty factor

Coil versions, bistable coil

Coil code	Rated voltage VDC	Set voltage VDC	Reset voltage VDC	Coil resistance Ω±10%	Rated coil power W
bistable 1 coil					
BL12	12	9.6	9.6	96	1.5
bistable 2 coil					
CL12	12	9.6	9.6	48	3/3

All figures are given for coil without preenergization, at ambient temperature +23°C
Max. coil power: 130% of rated coil power
Other coil voltages on request

Coil operation

coil terminals	1 coil		2 coils		
	A1	A2	A1	A2	A3
Set	-	+	-	+	
Reset	+	-	-		+

Contact position not defined at delivery

Insulation Data

Initial dielectric strength	
between open contacts	1500V _{rms}
between contact and coil	4000V _{rms}
Initial surge withstand voltage	
between contact and coil	10000V (1.2/50μs)
Clearance/creepage	
between contact and coil	≥6/9mm



Material group of insulation parts	IIIa
Tracking index of relay base	PTI 175V

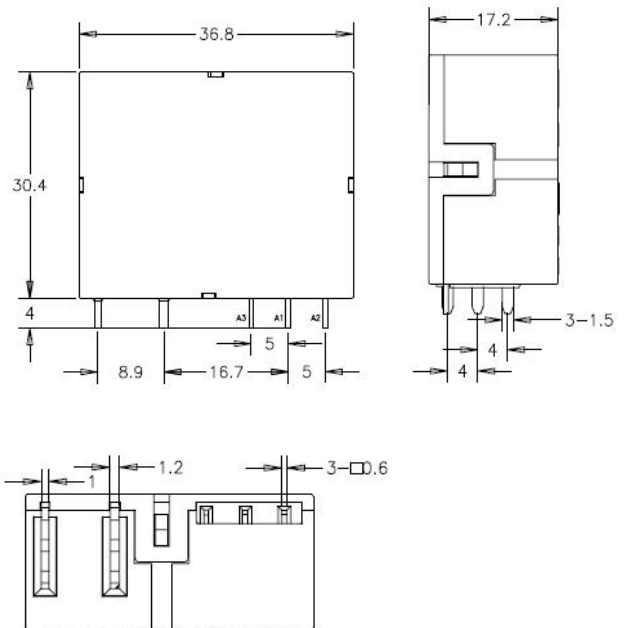
Other Data

Material compliance: EU RoHS/ELV, China RoHS, REACH, Halogen content refer to the Product Compliance Support Center at www.te.com/customer-support/rohssupportcenter

Ambient temperature	-40 to 70°C
Category of environmental protection	IEC 61810
Vibration resistance (functional)	RTI (dust protected)
Shock resistance (functional)	1.5mm double amplitude ¹⁾
Shock resistance (destructive)	50g
Terminal type	100g
Weight	PCB Mounting
Packaging/unit	appr. 37.5g
	200pcs/carton

¹⁾ 10...55Hz

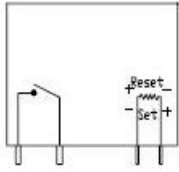
Dimensions



Power Latching Relay EW60 (Continued)

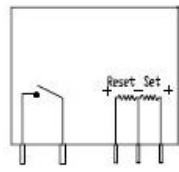
Wire Connection drawing

bistable 1 coil:



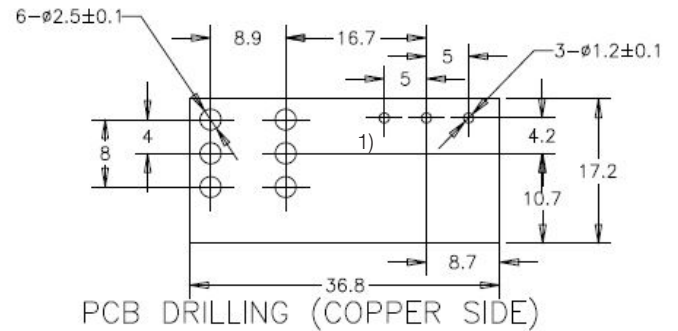
Single Coil

bistable 2 coils:



Dual Coil

PCB Drilling (Copper Side)



1) if 2 coil version

Product code structure

Typical product code

EW 6 0 -1 A 3 -B L12 D 0 4

Type (product family)

Version - Current class / Model

6 60A

Version - Orientation and PerformanceClass

0 vertical (Bottom-right), standard performance

Number of Contact Poles

1 1 pole

Contact configuration

A form A (NO Contact)

Contact material

3 AgSnO₂

Coil version

B bistable 1 coil
C bistable 2 coils

Coil voltage

L12 Low Sensitivity, 12V,

Category of Protection

D RTI (dust proof)

Mechanical feature

0 standard

Terminals

4 pcb terminals

Product code	Design	Coil	Contact material	Part Number
EW60-1A3-BL12D04	Vertical	12V Bistable, 1 Coil, 1.5W	AgSnO ₂	2071366-1
EW60-1A3-CL12D04	Vertical	12V Bistable, 2 Coils 3W	AgSnO ₂	2071366-2

Other types on request

X-ON Electronics

Largest Supplier of Electrical and Electronic Components

Click to view similar products for [Industrial Relays](#) category:

Click to view products by [TE Connectivity](#) manufacturer:

Other Similar products are found below :

[6-1617801-8](#) [6-1618107-9](#) [7-1618273-3](#) [EV250-4A-02](#) [EV250-6A-01](#) [FCA-125-CX8](#) [FCA-325-159](#) [FCA-410-138](#) [8000-S3121](#) [8-1618273-6](#)
[8-1618393-1](#) [GCA63A220VAC60HZ](#) [GCA63A277VAC60HZ](#) [GCA63A600VAC60HZ](#) [1-1672275-3](#) [1-1833005-4](#) [H-16/S1](#) [A711Z](#) [H-8C](#)
[H-8/S11](#) [H-8/S68](#) [ACC530U20](#) [ACC730U30](#) [RF303ZM4-12](#) [DH18DA](#) [1423675-8](#) [AR4-15F13-C01](#) [AR7-41F11](#) [AVR907](#) [15732A200](#)
[B07B032AC1-0329](#) [B329](#) [B490A](#) [1618279-1](#) [BHR124Y](#) [1810DDB-SX](#) [N417](#) [P30C42A12D1-120](#) [2-1617748-6](#) [2-1618375-1](#) [2-1618396-6](#)
[2-1618398-1](#) [JMAPD-5XL](#) [JMGACD-5M](#) [JMGSC-5LW](#) [JMGSCD-5L](#) [PBO-18A1218](#) [PBO-40A3040](#) [K8DSPH1200480VAC](#) [KA-3C-12A](#)