

## EP Economy paper labels

Tyco Electronics EP is a thermal transfer printable paper with a permanent adhesive, designed for use in general purpose labeling applications requiring a low cost label material. EP has an aggressive adhesive for bonding to corrugated, films and plastic materials, and it is ideal for labeling in mild environments. The ultra-smooth finish is excellent for bar coding applications. EP remains bonded permanently to most surfaces and typically results in label or substrate tear when removal is attempted. For reliable print performance use with Tyco Electronics 1330-0600 ribbon.

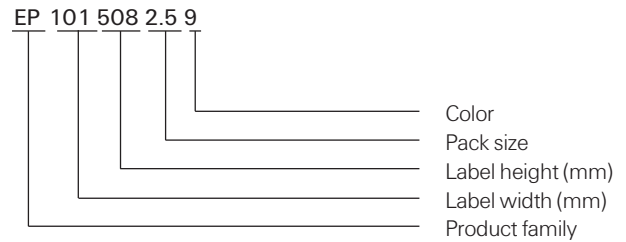
### Features and benefits

- Thermal transfer printable
- Ultra-smooth coated facestock
- Versatile adhesive with excellent initial tack
- Several die-cut sizes available



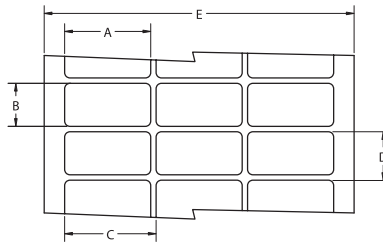
| Specifications/Approvals  |                                   |
|---|-----------------------------------|
| Industry  | UL MH17001 Group PGDQ2            |
| <b>Adhesive</b>   | Permanent rubber-based            |
| <b>Service temperature</b>  | -53°C to +93°C    -65°F to +200°F |
| <b>Recommended printer</b>  | T308S*                            |
| <b>Recommended ribbon</b>   | 1330-0600-10*                     |
| *Alternative printers and ribbons are available for special applications. Contact Tyco Electronics Identification for more information. |                                   |

### Part numbering system



## EP Economy paper labels

### Ordering information



### Product dimensions

| Product order code | Package quantity | Labels across | Label width (A) |               | Label height (B) |               | Horizontal repeat (C) |               | Vertical repeat (D) |               | Web width (E) |               |
|--------------------|------------------|---------------|-----------------|---------------|------------------|---------------|-----------------------|---------------|---------------------|---------------|---------------|---------------|
|                    |                  |               | mm              | <i>inches</i> | mm               | <i>inches</i> | mm                    | <i>inches</i> | mm                  | <i>inches</i> | mm            | <i>inches</i> |
| * EP-191064-10-9   | 10,000           | 4             | 19.1            | <i>0.750</i>  | 6.4              | <i>0.250</i>  | 21.6                  | <i>0.850</i>  | 9.5                 | <i>0.375</i>  | 89.9          | <i>3.540</i>  |
| EP-254097-10-9     | 10,000           | 3             | 25.4            | <i>1.000</i>  | 9.7              | <i>0.380</i>  | 27.9                  | <i>1.100</i>  | 12.7                | <i>0.500</i>  | 87.4          | <i>3.440</i>  |
| EP-254127-10-9     | 10,000           | 3             | 25.4            | <i>1.000</i>  | 12.7             | <i>0.500</i>  | 27.9                  | <i>1.100</i>  | 16.9                | <i>0.666</i>  | 87.4          | <i>3.440</i>  |
| EP-254254-10-9     | 10,000           | 3             | 25.4            | <i>1.000</i>  | 25.4             | <i>1.000</i>  | 27.9                  | <i>1.100</i>  | 28.6                | <i>1.125</i>  | 87.4          | <i>3.440</i>  |
| EP-318064-10-9     | 10,000           | 1             | 31.8            | <i>1.250</i>  | 6.4              | <i>0.250</i>  | N/A                   | <i>N/A</i>    | 9.5                 | <i>0.375</i>  | 37.9          | <i>1.490</i>  |
| EP-318097-10-9     | 10,000           | 1             | 31.8            | <i>1.250</i>  | 9.7              | <i>0.380</i>  | N/A                   | <i>N/A</i>    | 12.7                | <i>0.500</i>  | 37.8          | <i>1.488</i>  |
| EP-381064-10-9     | 10,000           | 1             | 38.1            | <i>1.500</i>  | 6.4              | <i>0.250</i>  | N/A                   | <i>N/A</i>    | 9.5                 | <i>0.375</i>  | 44.5          | <i>1.750</i>  |
| * EP-381127-5-9    | 5,000            | 2             | 38.1            | <i>1.500</i>  | 12.7             | <i>0.500</i>  | 44.2                  | <i>1.738</i>  | 15.9                | <i>0.625</i>  | 88.2          | <i>3.472</i>  |
| EP-381191-5-9      | 5,000            | 2             | 38.1            | <i>1.500</i>  | 19.1             | <i>0.750</i>  | 43.2                  | <i>1.700</i>  | 22.2                | <i>0.875</i>  | 87.6          | <i>3.450</i>  |
| * EP-381381-2.5-9  | 2,500            | 2             | 38.1            | <i>1.500</i>  | 38.1             | <i>1.500</i>  | 44.5                  | <i>1.750</i>  | 40.8                | <i>1.607</i>  | 88.9          | <i>3.500</i>  |
| * EP-381635-5-9    | 5,000            | 2             | 38.1            | <i>1.500</i>  | 63.5             | <i>2.500</i>  | 40.6                  | <i>1.600</i>  | 66.7                | <i>2.625</i>  | 84.7          | <i>3.336</i>  |
| * EP-406254-1.5-9  | 1,500            | 2             | 40.6            | <i>1.600</i>  | 25.4             | <i>1.000</i>  | 55.9                  | <i>2.200</i>  | 38.1                | <i>1.500</i>  | 102.9         | <i>4.050</i>  |
| EP-445102-5-9      | 5,000            | 1             | 44.5            | <i>1.750</i>  | 10.2             | <i>0.400</i>  | N/A                   | <i>N/A</i>    | 12.7                | <i>0.500</i>  | 50.4          | <i>1.986</i>  |
| EP-445445-2-9      | 2,000            | 1             | 44.5            | <i>1.750</i>  | 44.5             | <i>1.750</i>  | N/A                   | <i>N/A</i>    | 47.6                | <i>1.875</i>  | 50.4          | <i>1.986</i>  |
| EP-508064-10-9     | 10,000           | 1             | 50.8            | <i>2.000</i>  | 6.4              | <i>0.250</i>  | N/A                   | <i>N/A</i>    | 9.5                 | <i>0.375</i>  | 56.9          | <i>2.240</i>  |
| EP-508095-5-9      | 5,000            | 1             | 50.8            | <i>2.000</i>  | 9.5              | <i>0.375</i>  | N/A                   | <i>N/A</i>    | 12.7                | <i>0.500</i>  | 57.2          | <i>2.250</i>  |
| EP-508127-5-9      | 5,000            | 1             | 50.8            | <i>2.000</i>  | 12.7             | <i>0.500</i>  | N/A                   | <i>N/A</i>    | 15.9                | <i>0.625</i>  | 56.9          | <i>2.240</i>  |
| EP-508254-5-9      | 5,000            | 1             | 50.8            | <i>2.000</i>  | 25.4             | <i>1.000</i>  | N/A                   | <i>N/A</i>    | 28.6                | <i>1.125</i>  | 57.2          | <i>2.250</i>  |
| EP-508318-2.5-9    | 2,500            | 1             | 50.8            | <i>2.000</i>  | 31.8             | <i>1.250</i>  | N/A                   | <i>N/A</i>    | 34.9                | <i>1.375</i>  | 56.9          | <i>2.240</i>  |
| EP-508508-3-9      | 3,000            | 1             | 50.8            | <i>2.000</i>  | 50.8             | <i>2.000</i>  | N/A                   | <i>N/A</i>    | 54.6                | <i>2.150</i>  | 54.0          | <i>2.130</i>  |
| EP-523841-1.5-9    | 1,500            | 1             | 52.3            | <i>2.060</i>  | 84.1             | <i>3.310</i>  | N/A                   | <i>N/A</i>    | 88.9                | <i>3.500</i>  | 58.2          | <i>2.290</i>  |
| EP-610419-2.5-9    | 2,500            | 1             | 61.0            | <i>2.400</i>  | 41.9             | <i>1.650</i>  | N/A                   | <i>N/A</i>    | 45.5                | <i>1.792</i>  | 67.3          | <i>2.650</i>  |
| EP-699191-5-9      | 5,000            | 1             | 69.9            | <i>2.750</i>  | 19.1             | <i>0.750</i>  | N/A                   | <i>N/A</i>    | 23.3                | <i>0.917</i>  | 76.2          | <i>3.000</i>  |
| EP-699254-5-9      | 5,000            | 1             | 69.9            | <i>2.750</i>  | 25.4             | <i>1.000</i>  | N/A                   | <i>N/A</i>    | 28.6                | <i>1.125</i>  | 76.2          | <i>3.000</i>  |
| EP-762381-2.5-9    | 2,500            | 1             | 76.2            | <i>3.000</i>  | 38.1             | <i>1.500</i>  | N/A                   | <i>N/A</i>    | 41.3                | <i>1.625</i>  | 82.3          | <i>3.240</i>  |
| EP-762508-2.5-9    | 2,500            | 1             | 76.2            | <i>3.000</i>  | 50.8             | <i>2.000</i>  | N/A                   | <i>N/A</i>    | 54.0                | <i>2.125</i>  | 82.6          | <i>3.240</i>  |
| EP-762127-1-9      | 1,000            | 1             | 76.2            | <i>3.000</i>  | 127.0            | <i>5.000</i>  | N/A                   | <i>N/A</i>    | 129.5               | <i>5.100</i>  | 79.4          | <i>3.130</i>  |
| EP-762254-5-9      | 5,000            | 1             | 76.2            | <i>3.000</i>  | 25.4             | <i>1.000</i>  | N/A                   | <i>N/A</i>    | 28.6                | <i>1.125</i>  | 82.3          | <i>3.240</i>  |
| EP-101508-2.5-9    | 2,500            | 1             | 101.6           | <i>4.000</i>  | 50.8             | <i>2.000</i>  | N/A                   | <i>N/A</i>    | 54.6                | <i>2.150</i>  | 104.1         | <i>4.100</i>  |
| EP-101635-2.5-9    | 2,500            | 1             | 101.6           | <i>4.000</i>  | 63.5             | <i>2.500</i>  | N/A                   | <i>N/A</i>    | 66.7                | <i>2.625</i>  | 107.7         | <i>4.240</i>  |
| EP-101762-1.8-9    | 1,800            | 1             | 101.6           | <i>4.000</i>  | 76.2             | <i>3.000</i>  | N/A                   | <i>N/A</i>    | 79.4                | <i>3.125</i>  | 104.1         | <i>4.100</i>  |
| EP-101101-1.3-9    | 1,300            | 1             | 101.6           | <i>4.000</i>  | 101.6            | <i>4.000</i>  | N/A                   | <i>N/A</i>    | 104.8               | <i>4.125</i>  | 104.1         | <i>4.100</i>  |
| EP-101165-0.85-9   | 850              | 1             | 101.6           | <i>4.000</i>  | 165.1            | <i>6.500</i>  | N/A                   | <i>N/A</i>    | 168.3               | <i>6.680</i>  | 104.9         | <i>4.130</i>  |

\* NOTE: Standard Format Not Compatible with T200 Printers

## X-ON Electronics

Largest Supplier of Electrical and Electronic Components

*Click to view similar products for [TE Connectivity](#) manufacturer:*

Other Similar products are found below :

[D38999/24FJ4AN](#) [570416-000](#) [CLTEQ-M81CE-SSRELAY-4-20V](#) [4-1195131-0](#) [650069-000](#) [SMD100-2](#) [358838-000](#) [CB-1022B-78](#)  
[RM707012](#) [RP410012](#) [MMS42](#) [1-640426-8](#) [2EDL4CM](#) [DTS20W19-11PD-3028-LC](#) [RM202615](#) [NC6-P104-06](#) [MSPS103B](#) [DTS26F21-41HE-LC](#) [DTS26F21-41AE](#) [DTS26F21-41PE-LC](#) [DTS26F21-11SE-3028-LC](#) [30DCB6](#) [1932144-1](#) [293545-4](#) [LVR125S](#) [MS27466T25F4PB](#)  
[CKB-38-78010](#) [TR04AI-TINELLOCKRING](#) [1206SFF150F/63-2](#) [D38999/20JB35HA](#) [TE1500A2R2J](#) [D38999/20WC8BB](#) [DTS24F19-11SC-3028-LC](#) [D38999/24WG11HA](#) [D38999/24WG11HN](#) [MS27467T21F11H](#) [DJT16E21-11HA](#) [MS27467T21F35J](#) [MS27467T21F11J](#)  
[MS27467T21F16H-LC](#) [MS27467T21F35H](#) [MS27467T21F41H-LC](#) [1206SFH150F/24-2](#) [RP330024](#) [DJT16E21-11PA-LC](#) [DJT16E21-11HA-LC](#) [DJT16E21-11AA](#) [MS27467T21B11JA](#) [DJT16E21-11JA](#) [MS27467T21B11JA-LC](#)