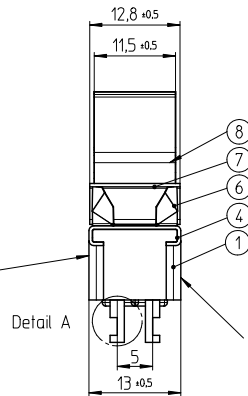
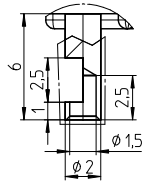


Detail A
Scale 5:1



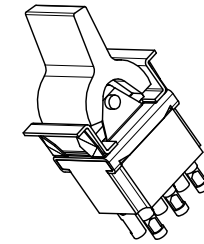
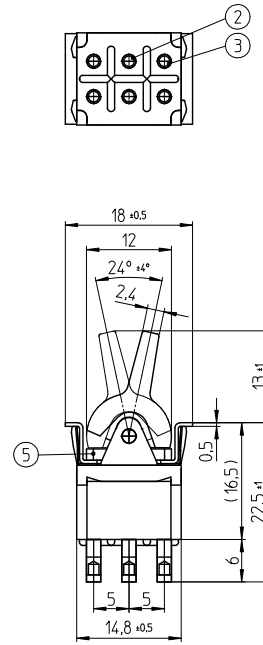
Date Code Printing
last digit of year
A-L = January to December
Day

Detail A

Printing of
Logo and Rating

ALCO
FLN1904
6A AC 250V
ON - ON

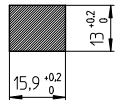
Model No.
Rating
SW. Funct.



Function Chart		
4 5 6 1 2 3		4 5 6 1 2 3

TE PN	Button	Part	Terminals 1 and 2 4 and 5	Terminals 2 and 3 5 and 6
2-6437630-6	white	FLN1904	ON	ON
3-6437630-7	black	FLN1904	ON	ON
2-6437630-7	red	FLN1904	ON	ON

Panel Cutout
thickness 1 to 2.5mm



Specifications

TE PN	Part	Rating	Initial Contact Resistance	Insulation Resistance	Dielectric Strength	Endurance
2-6437630-6 3-6437630-7 2-6437630-7	FLN1904	AC 125V 6A AC 250V 6A	MAX 10 milliohms at DC 2 ~ 4V 1A	MIN 1000 M Ohms at DC 500V	AC 1kV/1min (AC 1.2kV/1sec)	electrically 50,000 cycles at 20 cycles/minute (rated load resistive) mechanically 100,000 cycles at 20 cycles/minute

Materials Chart

1	Case	Polyester Resin	Black
2	Common	C3602BD	Ep-Cu/Ni 3,Au F b
3	Fixed contact	C3602BD+Ag	Ep-Cu/Ni 3,Au F b
4	Frame	SUS	
5	Mounting Sleeve	C3602BD	Ep-Cu/Ni 3 b
6	Leaf spring	SUS	
7	Plate	SUS	
8	Button	Nylon Resin	

PART NO.	PART NAME	MATERIAL/SURFACE	OPTIONAL DESCRIPTION
PART LIST			
TOLERANCES UNLESS OTHERWISE SPECIFIED ACCORDING TO ISO 8015 and ISO 2768-1			
DIMENSIONS: mm			
test dimen. / Prüfmaß: (), auxiliary dimen. / Hilfsmaß: (), theor. dimen. / theor. Maß: (), production control dimen. / Fertigungs-kontr.maß: [] ; dimen. for measure, technology / messtechn. rel. Maß: [] ;			
		DEPARTMENT	D&E
		DRAWER	04.012007 SA008712
		CHECKED	
		APPROVED	
ECR-NO.	DATE	NAME	INFO
SCALE:	NAME:		DWG NO.:

Rocker Switch Double pole
Long Rocker

1968521
OPTIONAL NO.:
Customer Drawing

REPLACEMENT FOR: DWG LOC NO.: F SHEET: 1 OF 1 REVISION: A A 2

THIS DRAWING IS A CONTROLLED DOCUMENT. HANDWRITTEN CHANGES ARE NOT ALLOWED

THIS INFORMATION IS CONFIDENTIAL AND PROPRIETARY TO TYCO ELECTRONICS AUSTRIA GMBH AND ITS WORLDWIDE SUBSIDIARIES AND AFFILIATES. IT MAY NOT BE DISCLOSED TO ANYONE OTHER THAN TYCO ELECTRONICS PERSONNEL. WITHOUT WRITTEN AUTHORIZATION FROM TYCO ELECTRONICS AUSTRIA.

X-ON Electronics

Largest Supplier of Electrical and Electronic Components

Click to view similar products for [Rocker Switches](#) category:

Click to view products by [TE Connectivity](#) manufacturer:

Other Similar products are found below :

[LTILA6E-1S-WH-RC-FN12VXCR1](#) [6-1571986-9](#) [8007K26N324V52](#) [8055K23Z7V](#) [8055K32Z7V](#) [8055K52Z7V](#) [8138K20E6M50](#) [84206L](#)
[84312LX](#) [PREDD5-07F-BB0GW](#) [999-16716-002](#) [999-16716-003](#) [999-16716-004](#) [A101J1V3Q004](#) [A101J2ZQ004](#) [A101J4ZQ004](#)
[A101J51CB0004](#) [A103J1ZQ004](#) [A201J1AQ004](#) [A201J3ZB004](#) [A201J50ZQ004](#) [A203J51ZQ0004](#) [A435S1YZQ](#) [H8500XBBBBL-A](#)
[H8653VBBG2577W](#) [HB130CHNWWNAAC](#) [R13112ABB-602W](#) [1251.0303](#) [AE205J60V3B004](#) [1352.0107](#) [1500G51E](#) [1571099-3](#)
[1571987-4](#) [1571987-5](#) [1571989-7](#) [1571988-5](#) [B123J77V7B2](#) [B226J50W4Q22P](#) [B433J37ZQ22M](#) [160212E](#) [1634200-7](#) [1801.1164](#) [1839.1502](#)
[PANEL-PLUG-VHP-BLACK](#) [PANEL-PLUG-VHP-WT](#) [K1ABBSCADN](#) [KG312A2DXD246X](#) [250011E714](#) [2600HM11E](#) [2600R21E](#)