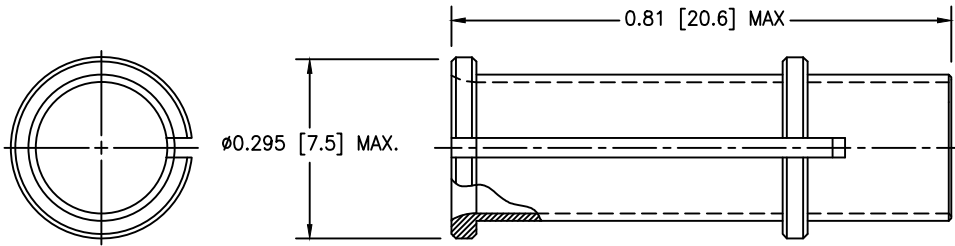
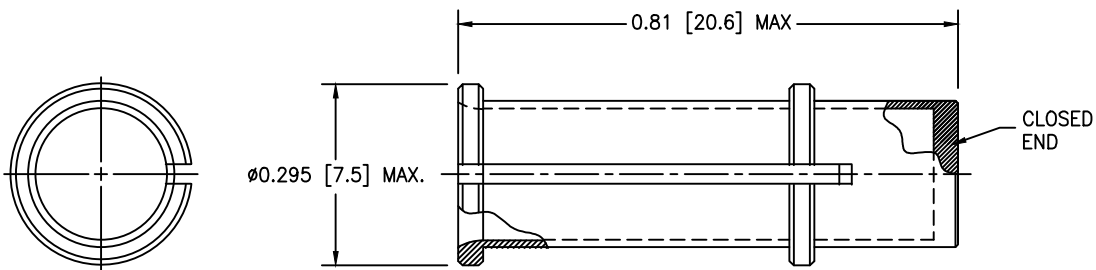


LTR	DESCRIPTION	DATE	APPROVED
B	RELEASED PER ECO-15-005340	04/07/2015	I. MYONG



-01: PASS-THROUGH



-02: PLUG

MATERIAL:

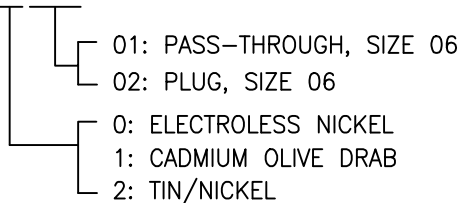
- BASE METAL - ALLOY C17200 OR C17300 PER ASTM B196/B196M
- PLATINGS - ELECTROLESS NICKEL CONFORMING TO SAE AMS-C-26074, CLASS 3, GRADE C
- CADMIUM OLIVE DRAB CONFORMING TO SAE AMS-QQ-P-416 TYPE II CLASS 3 (500 HOUR SALT SPRAY)
- TIN/NICKEL PER TYCO ES-61400/32

APPLICATION:

1. THESE DEVICES ARE DESIGNED TO BE USED IN A HEXASHIELDF EMI TERMINATION SYSTEM.


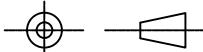
PART NUMBERING:

FLX40-03X-XX



©2015 TE CONNECTIVITY LTD. FAMILY OF COMPANIES. ALL RIGHTS RESERVED
 TE CONNECTIVITY (LOGO) AND TE (LOGO) ARE TRADEMARKS.
 OTHER LOGOS, PRODUCT AND/OR COMPANY NAMES MAY BE TRADEMARKS OF THEIR RESPECTIVE OWNERS.

**Raychem Adapters
 CUSTOMER DRAWING**

UNLESS OTHERWISE SPECIFIED, DIMENSIONS ARE IN INCHES. METRIC DIMENSIONS ARE IN BRACKETS.	DRAWN	DATE	 TE CONNECTIVITY
	N. SWATKO	04/01/2015	
TYCO ELECTRONICS RESERVES THE RIGHT TO CHANGE THIS DRAWING AT ANYTIME USERS SHOULD EVALUATE THE SUITABILITY OF THE PRODUCT FOR THEIR APPLICATION.	CHECKED	DATE	
	I. MYONG	04/01/2015	
DECIMAL TOLERANCES: .XXX ±.005 [0,13mm] .XX ±.01 [0,25mm] .X ±.1 [2,54mm]	APPROVED	DATE	TITLE FERRULE, PASS-THROUGH AND PLUG HEXASHIELDF EMI TERMINATION SYSTEM
	I. MYONG	04/01/2015	
ANGULAR TOLERANCE: .X ±1°	CAD FILE NAME: FLX40-03X-XX.dwg	THIRD ANGLE PROJECTION: 	SIZE A
			CAGE 06090
			DWG. NO. FLX40-03X-XX
			REV B
		DO NOT SCALE THIS DRAWING	
		SHEET 1 OF 1	

X-ON Electronics

Largest Supplier of Electrical and Electronic Components

Click to view similar products for [Solder Sleeves & Shield Tubing](#) category:

Click to view products by [TE Connectivity](#) manufacturer:

Other Similar products are found below :

[D-260-C-A](#) [899170-000](#) [620040N001](#) [620069N003](#) [620263N004](#) [CTA-0050-01](#) [629624-000](#) [6501390002](#) [CX0781-000](#) [CX0782-000](#)
[696396-000](#) [697080-000](#) [715325N001](#) [FLX40-030-02-CS8652](#) [908357N001](#) [D-436-38CS2908](#) [CB0213-000](#) [CB0219-000](#) [274384-000](#)
[285343-000](#) [970053-000](#) [ST18-2-00](#) [FLX40-020-04-CS8651](#) [317035-000](#) [325534-000](#) [D-100-00-WOTI](#) [D-150-1011](#) [395947-000](#)
[427243N001](#) [514535-000](#) [C03534-000](#) [CB0220-000](#) [D44133N001](#) [068615-000](#) [626168-000](#) [451893-000](#) [931289-000](#) [162583-000](#)
[585769N001](#) [610001N004](#) [620005N003](#) [6200060004](#) [622041N003](#) [626167-000](#) [EG3678-000](#) [650075N002](#) [6500820003](#) [6500850004](#)
[650126N010](#) [650127N005](#)