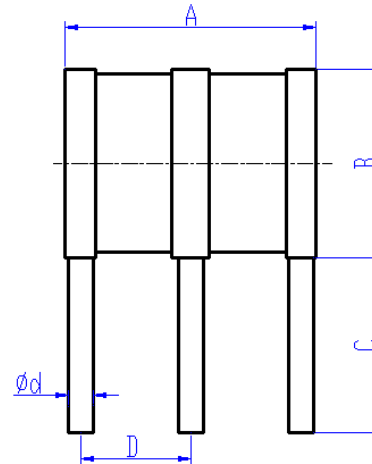
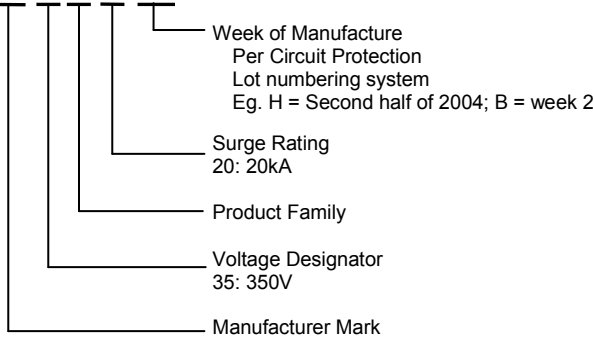


Specification Status: Released

Marking:
XX 35 R 20 HB

TABLE I. DIMENSIONS

	A		B		C		D		Ød
	MIN	MAX	MIN	MAX	MIN	MAX	MIN	MAX	NOM
mm:	9.7	10.3	7.3	7.7	6.5	7.5	4.1	4.7	1.0
in*:	(0.382)	(0.406)	(0.287)	(0.303)	(0.256)	(0.295)	(0.161)	(0.185)	(0.039)

*Rounded off approximation

TABLE II. Electrical Characteristics (Terms and tests in accordance with ITU-T K.12)

DC Sparkover Voltage	Impulse Sparkover Voltage		Insulation Resistance	Capacitance	Impulse Discharge Current
	(A-E)	(B-E)			8/20µs
@ 100V/s	@100V/µs	@1000V/µs	@100V _{DC}	@1MHz	(A+B-E)
350V ± 20%	≤900V	≤1000V	≥ 10,000MΩ	<1.0pF	10 hits(5hits for each polarity)
					20kA

Impulse Discharge Current 10/1000 µs	AC Discharge Current, 50 Hz
(A+B-E)	(A+B-E)
300 hits (150hits for each polarity)	Multiple Hits (1s duration: 10 Hits)
200A	20Arms

General Characteristics

No Radioactive Materials
 Storage temperature: -40°C ... +90°C
 Operating temperature: -40°C ... +90°C
 Electrode Material: Ni Plating
 Lead Material: Sn Plating

Materials Information
RoHS Compliant

 Directive 2002/95/EC
 Compliant

ELV Compliant

 Directive 2000/53/EC
 Compliant

Pb-Free


Precedence:

This specification takes precedence over documents referenced herein.

Effectivity:

Reference documents shall be the issue in effect on the date of invitation for bid.

CAUTION:

Operation beyond the rated voltage or current may result in rupture, electrical arcing or flame.

X-ON Electronics

Largest Supplier of Electrical and Electronic Components

Click to view similar products for [Resettable Fuses - PPTC category](#):

Click to view products by [TE Connectivity manufacturer](#):

Other Similar products are found below :

[0001.1010.G](#) [RF0077-000](#) [RF3256-000](#) [RF3301-000](#) [RF3382-000](#) [ASMD185-2](#) [SMD125-2](#) [RF2531-000](#) [RF2873-000](#) [RF3060-000](#) [TR600-150Q-B-0.5-0.130](#) [RXE090](#) [5E4795/04-1502](#) [TRF250-080T-B-1.0-0.125](#) [SMD100-2](#) [NIS5452MT1TXG](#) [NIS5431MT1TXG](#) [SMD250-2](#) [0ZCM0001FF2G](#) [0ZCM0003FF2G](#) [0ZCM0004FF2G](#) [BK60-017-DI](#) [BK60-075-DZ](#) [BK60-050-DI](#) [BSMD1210-050-13.2V](#) [SMD1206-200C-16V](#) [SMD1210-500-6V](#) [SMD1210-550-6V](#) [SMD0603-075-6V](#) [SMD0603-100-6V](#) [SMD0603-150-6V](#) [JK-SMD0805-300L](#) [JK-SMD1210-300L](#) [JK-SMD1210-400L](#) [JK-MSMD500L-12V](#) [BSMD0603-050-9V](#) [BSMD0603-050-12V](#) [BSMD0805-035-12V](#) [BSMD1812L-600-12V](#) [FTR1812-014](#) [FTR1206-150](#) [FTR1206-110](#) [FTR1812-260/16](#) [FTR1210-035/30](#) [FTR1812-020](#) [SMD0805-110](#) [BSMD1206-200-16V](#) [FRV055-240F](#) [F95456-000](#) [SMD0603B020TF](#)