



**intercontec**  
products

# 723 htec Receptacle

**speedtec**

**11-pin  
insulation insert Code 1 (socket)  
Earth-to-Housing Connection according to VDE 0627  
Protection Against Contact according to VDE 0623  
Electrically Protective Separation according to VDE 0140  
flange mount / Flange 28x28**

## Technical Data

number of pins	11
power	5 (4+PE)
signal	6
temperature range	-20 °C to 130 °C
protection type	when connected IP 66/67

## Electrical Data

	power	signal
rated current	max. 30 A*	max. 1.2 A*
rated voltage	850V/DC 630V/AC 50V/DC 30V/AC	
rated insulation voltage (L-L)	8000 V	1500 V

mating cycles	500
---------------	-----

## Data according to VDE 0110/EN61984, Paragraph 6.19.2.2

pollution degree	3
over voltage category	III
max. height for operation	2000 m

## Material

housing	zinc diecast / chromated
insulation insert	PA 6.6 mod., UL 94/V0
seals	FKM

**Contacts** (not part of product contents)

**Tools** (not part of product contents)

**H 53 C 005 NN 00 00 0300 000  
H E C 005 N 00 00 0300 000**



**Contact Arrangement**  
mating view

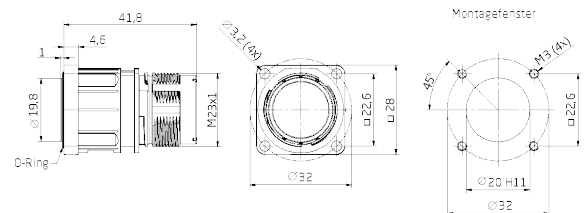


© 2018 TE Connectivity

TE Connectivity, TE connectivity (logo), intercontec (logo) and speedtec are trademarks.

While TE Connectivity (TE) has made every reasonable effort to ensure the accuracy of the information in this presentation, TE does not guarantee that it is error-free, nor does TE make any other representation, warranty or guarantee that the information is accurate, correct, reliable or current. TE reserves the right to make any adjustments to the information contained herein at any time without notice. TE expressly disclaims all implied warranties regarding the information contained herein, including, but not limited to, any implied warranties of merchantability or fitness for a particular purpose. The dimensions in this article are for reference purposes only and are subject to change without notice. Specifications are subject to change without notice. Consult TE for the latest dimensions and design specifications.

TE Connectivity Industrial GmbH  
Bernrieder Straße 15  
94559 Niederwinkling, Deutschland  
Tel.: +49 9962 2002-0  
Fax: +49 9962 2002-70  
E-Mail: intercontec@te.com  
Web: www.intercontec.biz



**Main Dimensions**  
Receptacle

\*for max. wire cross-section  
pay attention to the  
cross-section of used contacts

issue: 03.09.2018

## X-ON Electronics

Largest Supplier of Electrical and Electronic Components

*Click to view similar products for [Circular Metric Connectors](#) category:*

*Click to view products by [TE CONNECTIVITY](#) manufacturer:*

Other Similar products are found below :

[600X518037X](#) [6STD15PCR99B70A](#) [8R4000A16M020](#) [8R5000A16M005](#) [1200910002](#) [1203580030](#) [1200910008](#) [1200910011](#) [1300140094](#)  
[130203-0054](#) [1300140026](#) [1300150099](#) [RF-12S1N8A90DU](#) [1612618](#) [21036836414](#) [8R4006A16M010](#) [1604232](#) [1R3006A20M005](#) [RF-](#)  
[12P1N8A80DU](#) [RF-12P1N8A90DU](#) [41-40011](#) [42-00006](#) [42-01015](#) [4-22279-4](#) [4-22281-1](#) [4-22284-9](#) [43-00113](#) [43-01088](#) [43-01203](#) [41-](#)  
[40013](#) [42-00008](#) [43-00343](#) [43-01026](#) [43-01032](#) [43-01162](#) [43-01173](#) [43-10000](#) [XS3P-M421-2](#) [600X518050X](#) [SACC-DSI-FS-5P-PG9-L180](#)  
[SC](#) [8R5006A16M020](#) [8R5006A16M005](#) [8R4000A16M010](#) [6-22279-3](#) [1605332](#) [N03FA03144](#) [1300140077](#) [43-16213](#) [43-01338](#)  
[XS2RD4265](#)