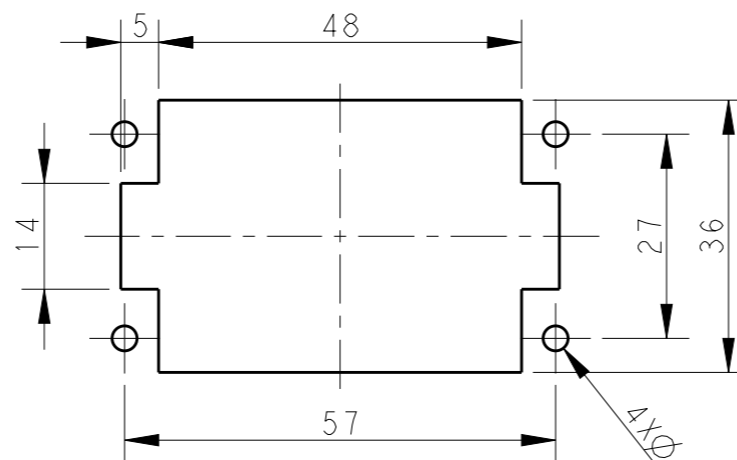
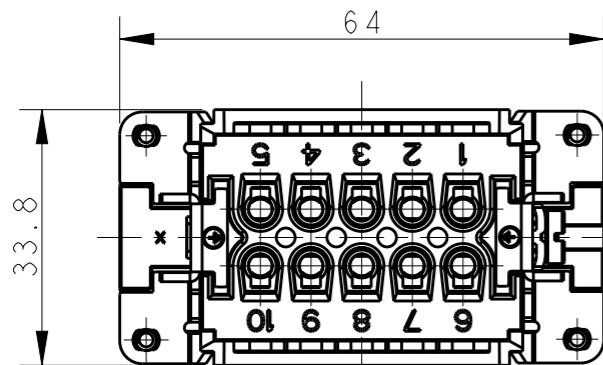


THIS DRAWING IS UNPUBLISHED. RELEASED FOR PUBLICATION 20
 © COPYRIGHT 20 BY - ALL RIGHTS RESERVED.

REVISIONS

| P | LTR | DESCRIPTION | DATE | DWN | APVD |
|----|-----|-----------------|-----------|-----|------|
| A | | INITIAL RELEASE | 14APR2015 | GY | CW |
| B | | ECR-15-013759 | 27SEP2015 | DW | CW |
| B1 | | ECR-16-011988 | 25AUG2016 | YC | CW |
| B2 | | ECR-18-017123 | 15DEC2018 | KW | CW |



PANEL CUT FOR INSERTS FOR USE WITHOUT HOODS/ HOUSINGS
 不使用防护外壳时芯件的安装开孔图

NOTES:

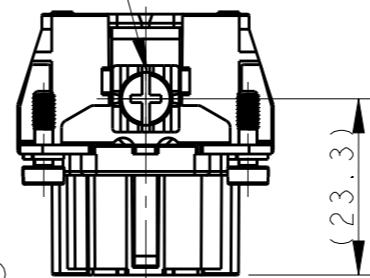
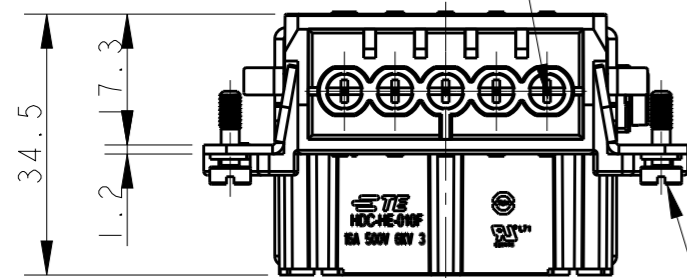
- TECHNICAL CHARACTERISTICS:
 INSULATION MATERIAL: PC
 RATED VOLTAGE: 500V
 RATED CURRENT: 16A
 INSULATION RESISTANCE: $\geq 400M\Omega$
 RATED IMPULSE VOLTAGE: 6KV
 POLLUTION DEGREE: 3
 FLAMMABILITY: UL94V-0
 MATING CYCLES: 500 CYCLES
 WIRE RANGE: $0.5mm^2 \sim 2.5mm^2$ (AWG20-AWG14)
 CONTACT TYPE: SCREW CLAMP (M3)

10X M3 SCREW, RECOMMENDED
 TIGHTENING TORQUE 0.5Nm
 10X M3螺丝, 推荐锁紧力矩0.5Nm

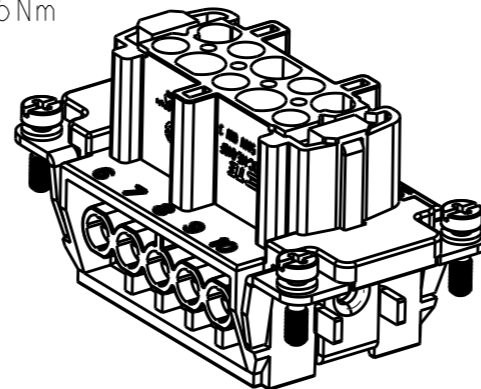
M4 SCREW, RECOMMENDED
 TIGHTENING TORQUE 1.2Nm
 M4螺丝, 推荐锁紧力矩1.2Nm

注释:

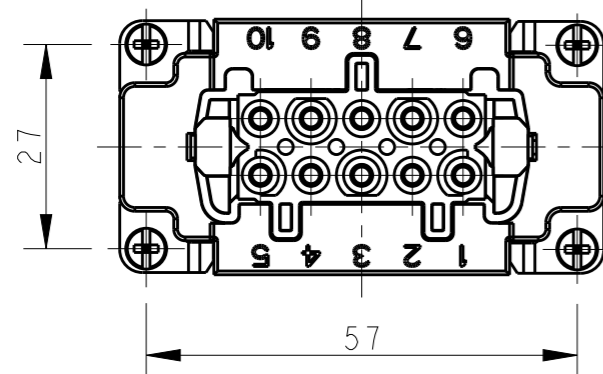
- 技术参数:
 绝缘材料: PC
 额定电压: 500V
 额定电流: 16A
 绝缘电阻: $\geq 400M\Omega$
 脉冲电压: 6KV
 污染等级: 3
 阻燃等级: UL94V-0
 插拔次数: 500 次
 接线范围: $0.5mm^2 \sim 2.5mm^2$ (AWG20-AWG14)
 接线类型: 螺丝压接 (M3)



4X M3 SCREW, RECOMMENDED
 TIGHTENING TORQUE 0.5Nm
 4X M3螺丝, 推荐锁紧力矩0.5Nm



TYPE 1, T2040102201-000, WITH LOGO
 类型 1, T2040102201-000, 带LOGO



| | | | | | | |
|--|--|------------------|------------|-----------|-----------------|----------------|
| THIS DRAWING IS A CONTROLLED DOCUMENT. | | DWN | GINO YAO | 14APR2015 | TE Connectivity | |
| DIMENSIONS: | | CHK | CHRIS WANG | 14APR2015 | | |
| mm | | APVD | XIANG XU | 14APR2015 | | |
| TOLERANCES UNLESS OTHERWISE SPECIFIED: | | PRODUCT SPEC | 108-137044 | | | |
| 0 PLC ±- | | APPLICATION SPEC | 114-137044 | | NAME | HE-010-F |
| 1 PLC ±- | | WEIGHT | - | | SIZE | A3 |
| 2 PLC ±- | | CUSTOMER DRAWING | - | | CAGE CODE | 00779 |
| 3 PLC ±- | | SCALE | 1:1 | | DRAWING NO | T2040102201000 |
| 4 PLC ±- | | SHEET | 1 OF 2 | | RESTRICTED TO | - |
| ANGLES ±- | | REV | B2 | | | |
| FINISH | | | | | | |
| MATERIAL | | | | | | |

THIS DRAWING IS UNPUBLISHED.

RELEASED FOR PUBLICATION

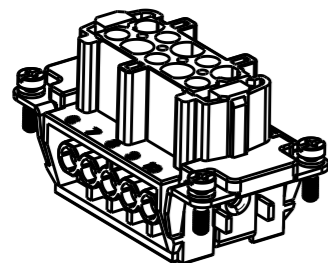
20

© COPYRIGHT 20 BY -

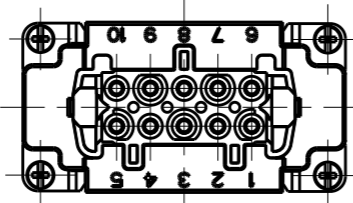
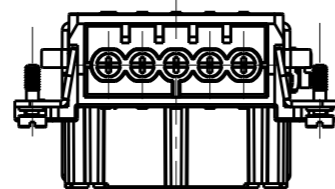
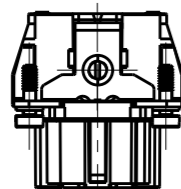
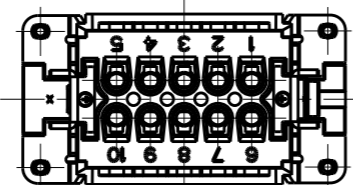
ALL RIGHTS RESERVED.

REVISIONS

| P | LTR | DESCRIPTION | DATE | DWN | APVD |
|---|-----|-------------|------|-----|------|
| - | | SEE SHEET 1 | - | - | - |
| | | | | | |
| | | | | | |

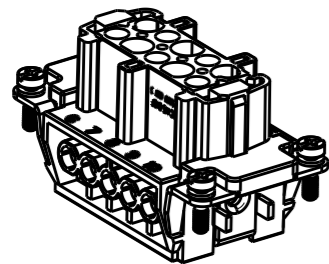


TYPE 2, T2040102201-001, WITHOUT LASER SIDE MARK
 类型 2, T2040102201-001, 不带侧面激光标识

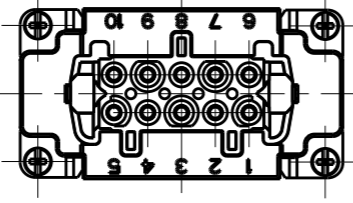
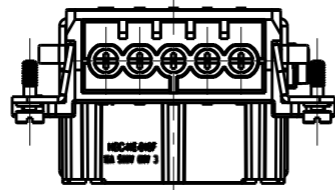
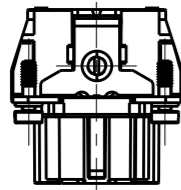
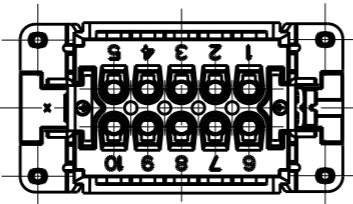


NOTE:
 ALL SPEC REFER TO TYPE 1

注释:
 所有产品规范参照 TYPE 1



TYPE 3, T2049102201-000, WITHOUT LASER LOGO
 类型 3, T2049102201-000, 不带激光LOGO标识



| | | | |
|-------------------|------------------------|---|------------|
| T2040102201-000 | HE-010-F | HE-010 FEMALE INSERT HE-010 母插 | TYPE 1 |
| T2040102201-001 | HE-010-F | HE-010 FEMALE INSERT, WITHOUT LASER SIDE MARK HE-010 母插, 无激光侧面标识 | TYPE 2 |
| T2049102201-000 | HE-010-F | HE-010 FEMALE INSERT, WITHOUT LOGO HE-010 母插, 无LOGO | TYPE 3 |
| PART NUMBER 料号 | PART DESCRIPTION 描述 | | TYPE 类型 |

| | | | | | | | | | | | | | | |
|--|--------|--------------------------------|--------------|--------------------|------------------------------|--------------------|----|-------|----|-------|----|-------|----|--------|
| THIS DRAWING IS A CONTROLLED DOCUMENT. | | DWN GINO YAO 14APR2015 | | | | | | | | | | | | |
| DIMENSIONS: mm | | CHK CHRIS WANG 14APR2015 | | | NAME HE-010-F | | | | | | | | | |
| TOLERANCES UNLESS OTHERWISE SPECIFIED: | | APVD XIANG XU 14APR2015 | | | | | | | | | | | | |
| <table border="0"> <tr><td>0 PLC</td><td>±-</td></tr> <tr><td>1 PLC</td><td>±-</td></tr> <tr><td>2 PLC</td><td>±-</td></tr> <tr><td>3 PLC</td><td>±-</td></tr> <tr><td>4 PLC</td><td>±-</td></tr> <tr><td>ANGLES</td><td>±-</td></tr> </table> | | 0 PLC | | | ±- | 1 PLC | ±- | 2 PLC | ±- | 3 PLC | ±- | 4 PLC | ±- | ANGLES |
| 0 PLC | ±- | | | | | | | | | | | | | |
| 1 PLC | ±- | | | | | | | | | | | | | |
| 2 PLC | ±- | | | | | | | | | | | | | |
| 3 PLC | ±- | | | | | | | | | | | | | |
| 4 PLC | ±- | | | | | | | | | | | | | |
| ANGLES | ±- | | | | | | | | | | | | | |
| MATERIAL | FINISH | APPLICATION SPEC 114-137044 | SIZE A3 | CAGE CODE 00779 | DRAWING NO T2040102201000 | RESTRICTED TO - | | | | | | | | |
| | | WEIGHT - | SCALE 1:1 | | SHEET 2 OF 2 | REV B2 | | | | | | | | |
| | | CUSTOMER DRAWING | | | | | | | | | | | | |

X-ON Electronics

Largest Supplier of Electrical and Electronic Components

Click to view similar products for IC & Component Sockets category:

Click to view products by TE Connectivity manufacturer:

Other Similar products are found below :

[714-43-102-31-012000](#) [0066-3-17-15-30-14-02-0](#) [0134-0-15-15-32-27-04-0](#) [614-DG5](#) [6527-0-00-15-00-00-03-0](#) [670](#) [672](#) [673](#) [712-93-120-41-001000](#) [714-93-104-31-018000](#) [8059-4G1-LF](#) [807-22-001-10-001101](#) [807-22-001-10-003101](#) [807-22-001-10-004101](#) [807-22-001-10-006101](#) [807-22-001-30-011101](#) [807-22-001-30-012101](#) [807-22-001-30-013101](#) [807-22-001-30-014101](#) [8-1437531-4](#) [8150-6P10](#) [833-93-034-10-001000](#) [835-43-014-10-001000](#) [851-41-006-10-001000](#) [851-43-008-20-001000](#) [851-43-014-20-001000](#) [851-93-006-20-001000](#) [851-93-010-20-001000](#) [853-43-020-10-001000](#) [86.010.0053.0](#) [116-43-306-41-003000](#) [116-43-308-41-007000](#) [116-87-308-41-007101](#) [PX-68LCC](#) [PX-84LCC](#) [121-13-318-41-001000](#) [121-13-320-41-001000](#) [121-13-308-41-001000](#) [123-43-314-41-801000](#) [123-43-420-41-001000](#) [123-43-636-41-001000](#) [123-87-320-41-001101](#) [122-13-316-41-001000](#) [123-13-624-41-001000](#) [123-43-306-41-001000](#) [123-43-322-41-801000](#) [123-43-428-41-001000](#) [123-43-624-41-001000](#) [12-3513-11](#) [123-91-320-41-001000](#)