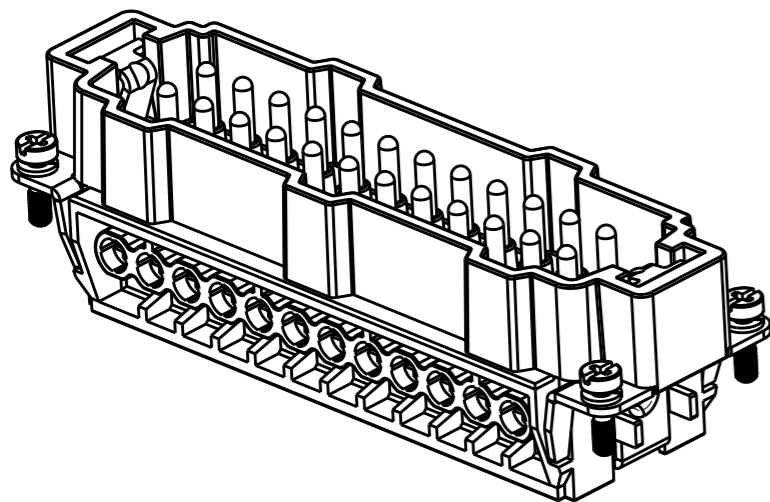


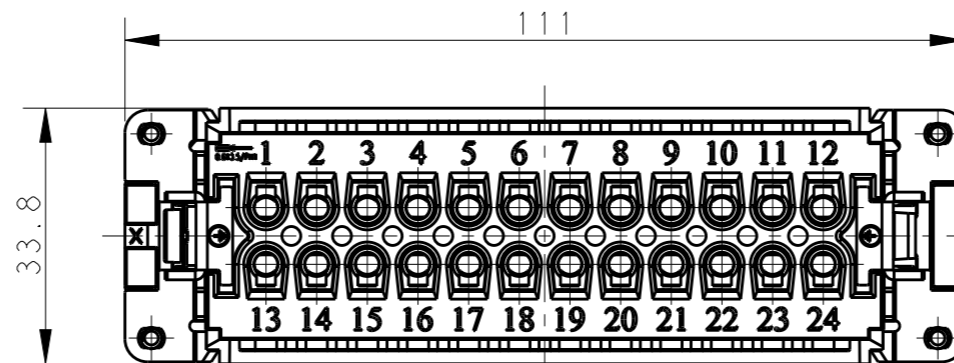
THIS DRAWING IS UNPUBLISHED. RELEASED FOR PUBLICATION 20
 © COPYRIGHT 20 BY - ALL RIGHTS RESERVED.

REVISIONS

| P | LTR | DESCRIPTION | DATE | DWN | APVD |
|----|-----|---------------|-----------|-----|------|
| A | | INITIAL | 05JAN2015 | GY | CW |
| A1 | | ECR-15-004309 | 24MAR2015 | GY | CW |
| B | | ECR-15-013759 | 26SEP2015 | DW | CW |
| B1 | | ECR-16-011988 | 27AUG2016 | YC | CW |



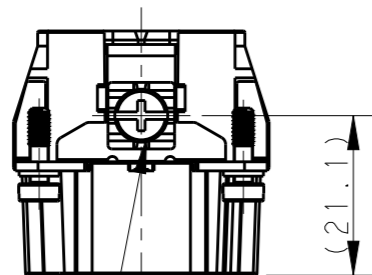
TYPE 1, T2040242101-000, WITH LOGO
 类型 1, T2040242101-000, 带LOGO



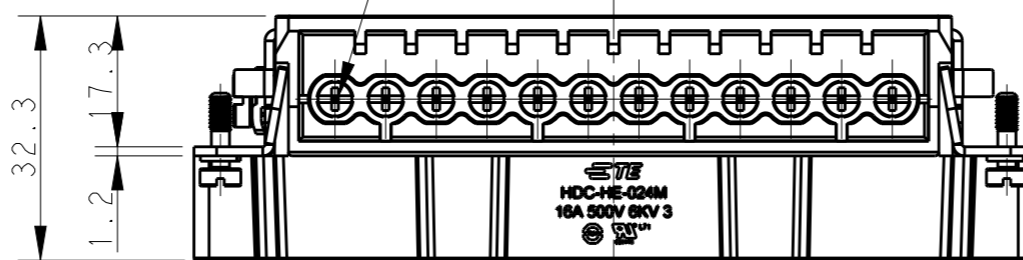
24X M3 SCREW, RECOMMENDED
 TIGHTENING TORQUE 0.5Nm
 24X M3螺丝, 推荐锁紧力矩0.5Nm

NOTES:

1. TECHNICAL CHARACTERISTICS:
 INSULATION MATERIAL: PC
 RATED VOLTAGE: 500V
 RATED CURRENT: 16A
 INSULATION RESISTANCE: $\geq 400M\Omega$
 RATED IMPULSE VOLTAGE: 6KV
 POLLUTION DEGREE: 3
 FLAMMABILITY: UL94V-0
 MATING CYCLES: 500 CYCLES
 WIRE RANGE: $0.5mm^2 \sim 2.5mm^2$ (AWG20-AWG14)
 CONTACT TYPE: SCREW CLAMP (M3)

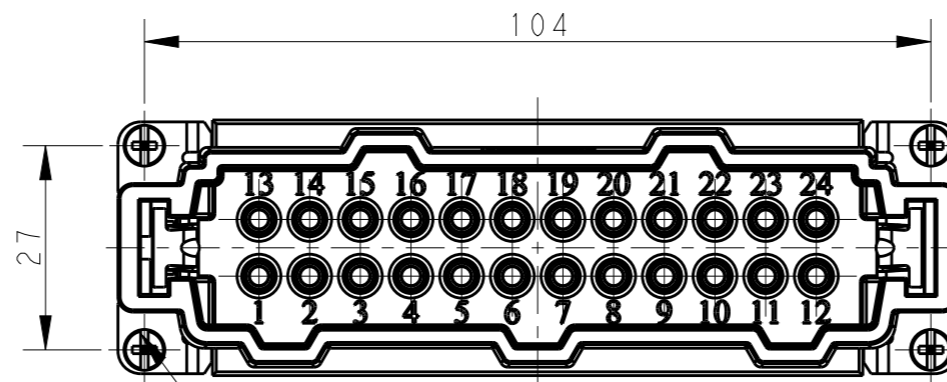


M4 SCREW, RECOMMENDED
 TIGHTENING TORQUE 1.2Nm
 M4螺丝, 推荐锁紧力矩1.2Nm

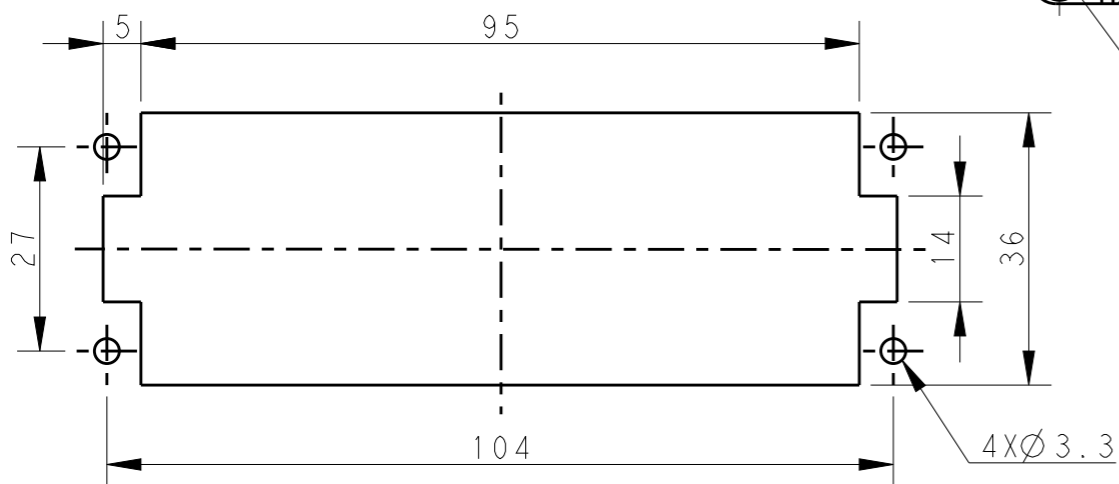


注释:


1. 技术参数:
 绝缘材料: PC
 额定电压: 500V
 额定电流: 16A
 绝缘电阻: $\geq 400M\Omega$
 脉冲电压: 6KV
 污染等级: 3
 阻燃等级: UL94V-0
 插拔次数: 500 次
 接线范围: $0.5mm^2 \sim 2.5mm^2$ (AWG20-AWG14)
 接线类型: 螺丝压接 (M3)



4X M3 SCREW, RECOMMENDED
 TIGHTENING TORQUE 0.5Nm
 4X M3螺丝, 推荐锁紧力矩0.5Nm



PANEL CUT FOR INSERTS FOR USE
 WITHOUT HOODS/ HOUSINGS
 不使用防护外壳时芯件的安装开孔图

| | | | | | | | | |
|--|--|------------------|------------|-----------|---|-----------|------------------|---------------|
| THIS DRAWING IS A CONTROLLED DOCUMENT. | | DWN | GINO YAO | 12AUG2014 |  TE Connectivity | NAME | HE-024-M | |
| DIMENSIONS: | | CHK | CHRIS WANG | 12AUG2014 | | | | |
| mm | | APVD | XIANG XU | 12AUG2014 | | | | |
| TOLERANCES UNLESS OTHERWISE SPECIFIED: | | PRODUCT SPEC | 108-137044 | | | | | |
| 0 PLC \pm | | APPLICATION SPEC | 114-137044 | | SIZE | CAGE CODE | DRAWING NO | RESTRICTED TO |
| 1 PLC \pm | | MATERIAL | - | | A3 | 00779 | ©-T2040242101000 | - |
| 2 PLC \pm | | FINISH | - | | CUSTOMER DRAWING | | | SCALE |
| 3 PLC \pm | | | | | | | | 1:1 |
| 4 PLC \pm | | | | | | | | SHEET |
| ANGLES \pm | | | | | | | | 1 OF 2 |
| | | | | | | | | REV |
| | | | | | | | | B1 |

4

3

2

1

THIS DRAWING IS UNPUBLISHED.

RELEASED FOR PUBLICATION

20

© COPYRIGHT 20 BY -

ALL RIGHTS RESERVED.

REVISIONS

| P | LTR | DESCRIPTION | DATE | DWN | APVD |
|---|-----|-------------|------|-----|------|
| | | SEE SHEET 1 | | | |
| | | | | | |
| | | | | | |

NOTE:
ALL SPEC REFER TO TYPE 1

注释:
所有产品规范参照 TYPE 1

TYPE 2, T2040242101-001, WITHOUT LOGO
类型 2, T2040242101-001, 不带LOGO

| | | | |
|-------------------|------------------------|--|------------|
| T2040242101-000 | HE-024-M | HE-024 MALE INSERT HE-024 公插 | TYPE 1 |
| T2040242101-001 | HE-024-M | HE-024 MALE INSERT, WITHOUT LOGO HE-024 公插, 无LOGO | TYPE 2 |
| PART NUMBER 料号 | PART DESCRIPTION 描述 | | TYPE 类型 |

THIS DRAWING IS A CONTROLLED DOCUMENT.

| DIMENSIONS: | TOLERANCES UNLESS OTHERWISE SPECIFIED: |
|-------------|--|
| mm | |
| | 0 PLC ±- |
| | 1 PLC ±- |
| | 2 PLC ±- |
| | 3 PLC ±- |
| | 4 PLC ±- |
| | ANGLES ±- |
| MATERIAL | FINISH |
| - | - |
| - | - |

| | | |
|------------------|------------|-----------|
| DWN | GINO YAO | 12AUG2014 |
| CHK | CHRIS WANG | 12AUG2014 |
| APVD | XIANG XU | 12AUG2014 |
| PRODUCT SPEC | 108-137044 | |
| APPLICATION SPEC | 114-137044 | |
| WEIGHT | - | |
| CUSTOMER DRAWING | | |

| | | | |
|---------------------------|-----------|------------------|---------------|
| TE TE Connectivity | | | |
| NAME HE-024-M | | | |
| SIZE | CAGE CODE | DRAWING NO | RESTRICTED TO |
| A3 | 00779 | ©-T2040242101000 | - |
| SCALE 1:1 | | SHEET 2 OF 2 | REV B1 |

1470-19 (3/13)

X-ON Electronics

Largest Supplier of Electrical and Electronic Components

Click to view similar products for IC & Component Sockets category:

Click to view products by TE Connectivity manufacturer:

Other Similar products are found below :

[714-43-102-31-012000](#) [0066-3-17-15-30-14-02-0](#) [0134-0-15-15-32-27-04-0](#) [614-DG5](#) [6527-0-00-15-00-00-03-0](#) [670](#) [672](#) [673](#) [712-93-120-41-001000](#) [714-93-104-31-018000](#) [8059-4G1-LF](#) [807-22-001-10-001101](#) [807-22-001-10-003101](#) [807-22-001-10-004101](#) [807-22-001-10-006101](#) [807-22-001-30-011101](#) [807-22-001-30-012101](#) [807-22-001-30-013101](#) [807-22-001-30-014101](#) [8-1437531-4](#) [8150-6P10](#) [833-93-034-10-001000](#) [835-43-014-10-001000](#) [851-41-006-10-001000](#) [851-43-008-20-001000](#) [851-43-014-20-001000](#) [851-93-006-20-001000](#) [851-93-010-20-001000](#) [853-43-020-10-001000](#) [86.010.0053.0](#) [116-43-306-41-003000](#) [116-43-308-41-007000](#) [116-87-308-41-007101](#) [PX-68LCC](#) [PX-84LCC](#) [121-13-318-41-001000](#) [121-13-320-41-001000](#) [121-13-308-41-001000](#) [123-43-314-41-801000](#) [123-43-420-41-001000](#) [123-43-636-41-001000](#) [123-87-320-41-001101](#) [122-13-316-41-001000](#) [123-13-624-41-001000](#) [123-43-306-41-001000](#) [123-43-322-41-801000](#) [123-43-428-41-001000](#) [123-43-624-41-001000](#) [12-3513-11](#) [123-91-320-41-001000](#)