

THIS DRAWING IS UNPUBLISHED.

RELEASED FOR PUBLICATION

20



COPYRIGHT 20

BY -

ALL RIGHTS RESERVED.

REVISIONS

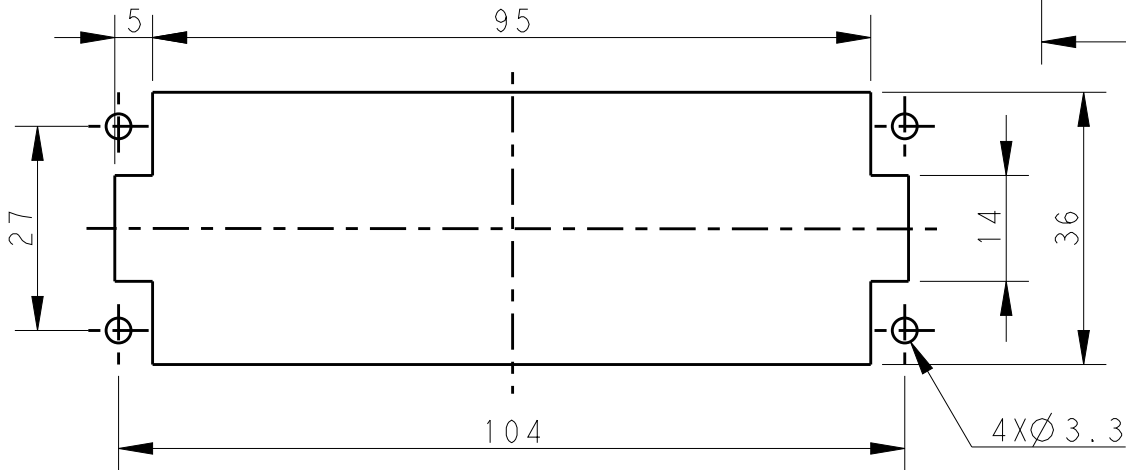
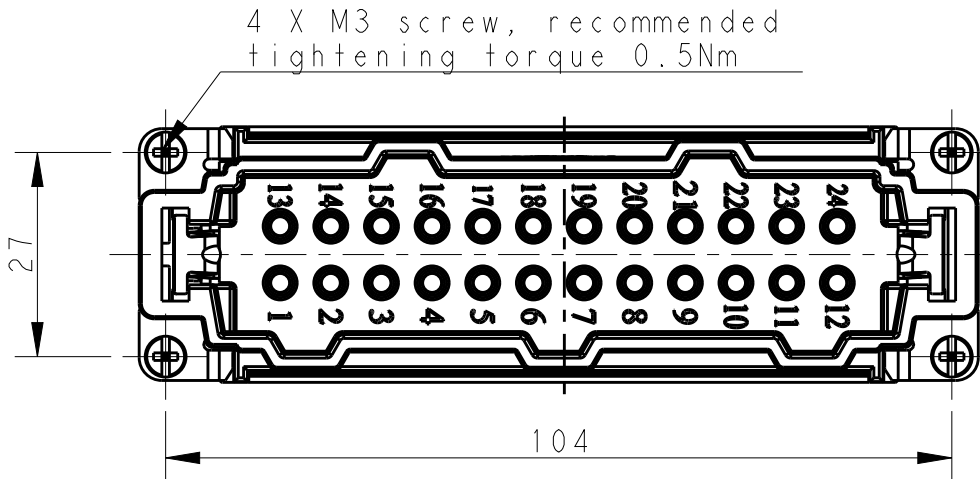
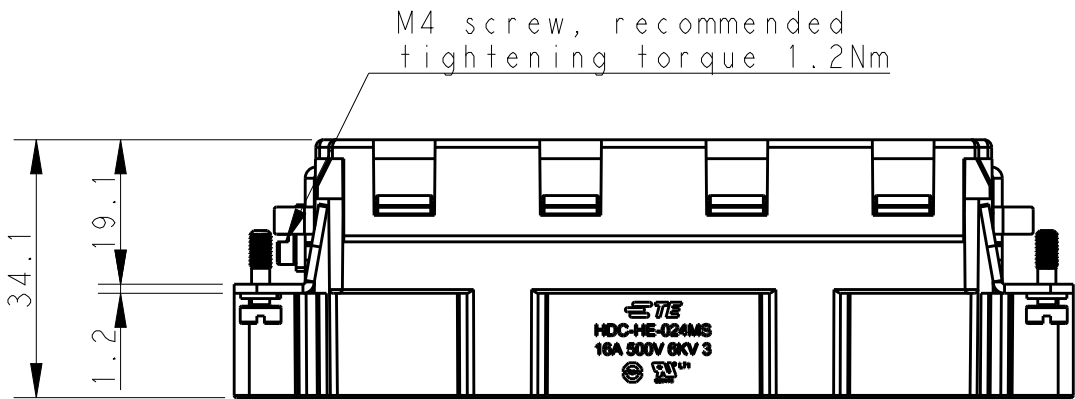
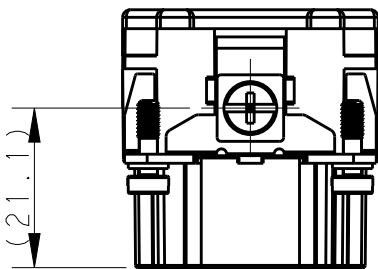
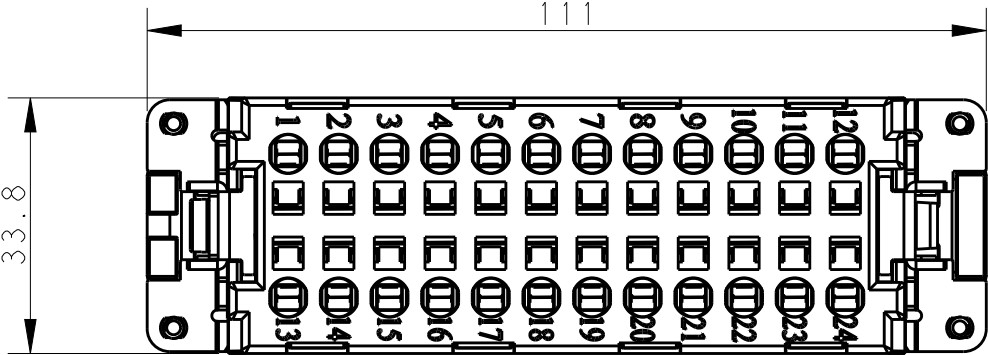
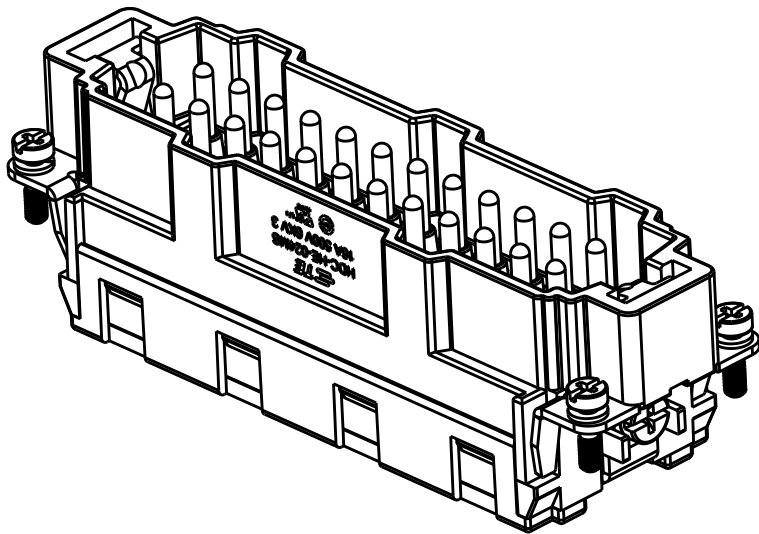
P	LTR	DESCRIPTION	DATE	DWN	APVD
	A	INITIAL	05Jan2015	GY	CW
	A1	ECR-15-004309	24Mar2015	GY	CW
	B	ECR-15-013759	26Sep2015	DW	CW

NOTES:

- I. TECHNICAL CHARACTERISTICS:
INSULATION MATERIAL: PC
RATED VOLTAGE: 500V
RATED CURRENT: 16A
INSULATION RESISTANCE: $\geq 400M\Omega$
RATED IMPULSE VOLTAGE: 6KV
POLLUTION DEGREE: 3
FLAMMABILITY: UL94V-0
MATING CYCLES: 500 CYCLES
OPERATION TEMPERATURE: $-40^{\circ}C \sim +125^{\circ}C$
WIRE RANGE: $0.5mm^2 \sim 2.5mm^2$ (AWG20-AWG14)
CONTACT TYPE: SPRING CLAMP

注释:

- I. 技术参数:
绝缘材料: PC
额定电压: 500V
额定电流: 16A
绝缘电阻: $\geq 400M\Omega$
脉冲电压: 6KV
污染等级: 3
阻燃等级: UL94V-0
插拔次数: 500 次
工作温度: $-40^{\circ}C \sim +125^{\circ}C$
接线范围: $0.5mm^2 \sim 2.5mm^2$ (AWG20-AWG14)
接线类型: 弹片压接

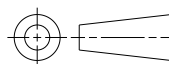


Panel cut out for inserts for using
without hoods/housings

THIS DRAWING IS A CONTROLLED DOCUMENT.

DIMENSIONS:

mm



MATERIAL

TOLERANCES UNLESS
OTHERWISE SPECIFIED:

0 PLC $\pm .$
1 PLC $\pm .$
2 PLC $\pm .$
3 PLC $\pm .$
4 PLC $\pm .$
ANGLES $\pm .$

FINISH

DWN 18Aug2014

Gino.Yao

CHK 18Aug2014

Chris.Wang

APVD 18Aug2014

Xiang.Xu

PRODUCT SPEC

108-137044

APPLICATION SPEC

114-137044

WEIGHT

-

CUSTOMER DRAWING

HE-024-MS

T2040243101-000

DESCRIPTION

PART NUMBER



TE Connectivity

NAME

HE-024-MS

SIZE

CAGE CODE

DRAWING NO

RESTRICTED TO

A3

00779

©-T2040243101000

-

SCALE

1:1

SHEET

1 OF 1

REV

B

X-ON Electronics

Largest Supplier of Electrical and Electronic Components

Click to view similar products for [IC & Component Sockets](#) category:

Click to view products by [TE Connectivity](#) manufacturer:

Other Similar products are found below :

[714-43-102-31-012000](#) [0066-3-17-15-30-14-02-0](#) [0134-0-15-15-32-27-04-0](#) [614-DG5](#) [6527-0-00-15-00-00-03-0](#) [670](#) [672](#) [673](#) [712-93-120-41-001000](#) [714-93-104-31-018000](#) [8059-4G1-LF](#) [807-22-001-10-001101](#) [807-22-001-10-003101](#) [807-22-001-10-004101](#) [807-22-001-10-006101](#) [807-22-001-30-011101](#) [807-22-001-30-012101](#) [807-22-001-30-013101](#) [807-22-001-30-014101](#) [8-1437531-4](#) [8150-6P10](#) [833-93-034-10-001000](#) [835-43-014-10-001000](#) [851-41-006-10-001000](#) [851-43-008-20-001000](#) [851-43-014-20-001000](#) [851-93-006-20-001000](#) [851-93-010-20-001000](#) [852-10-026-10-001000](#) [853-43-020-10-001000](#) [86.010.0053.0](#) [116-43-306-41-003000](#) [116-43-308-41-007000](#) [116-87-308-41-007101](#) [PX-68LCC](#) [PX-84LCC](#) [121-13-318-41-001000](#) [121-13-320-41-001000](#) [121-13-308-41-001000](#) [123-43-314-41-801000](#) [123-43-420-41-001000](#) [123-43-636-41-001000](#) [123-87-320-41-001101](#) [122-13-316-41-001000](#) [123-13-624-41-001000](#) [123-43-306-41-001000](#) [123-43-322-41-801000](#) [123-43-428-41-001000](#) [123-43-624-41-001000](#) [12-3513-11](#)